

THE PURPLE ROSE THEATRE COMPANY

ADDRESS: 137 Park Street
Chelsea, MI 48118

BUSINESS: 734.433.7782
BOX OFFICE: 734.433.7673
FAX: 734.475.0802
WEB SITE: www.purplerosetheatre.org

FOR INTERVIEWS & PHOTOGRAPHS:
Heidi Bennett, Marketing Director
734.433.7782 ext. 18
bennett@purplerosetheatre.org

FOR IMMEDIATE RELEASE

December 28, 2011

A STONE CARVER CHISELS AT FORGIVENESS

Artistic Director Guy Sanville takes the stage in William Mastrosimone's father-son drama

CHELSEA, Mich. — The Purple Rose Theatre Company continues its 2011/12 Season with *A Stone Carver*, a heartfelt story about the rekindling of a father-son relationship by William Mastrosimone. The production will enjoy an eight-week engagement from Thursday, January 19 – Saturday, March 10, 2012. Eight low-priced previews of *A Stone Carver* will be performed Thursday, January 19 – Thursday, January 26, with Press Opening on Friday, January 27, 2012. Regular performances for the duration of the run are Wednesdays through Saturdays at 8:00 PM with Wednesday and Saturday matinees at 3:00 PM and Sunday matinees at 2:00 PM. (*Editor's Note: A complete performance schedule including pricing can be found on page 3*). There will be two matinees performed for students at 11:00 AM on Tuesday, February 7 and Tuesday, March 6. Exclusive underwriting support for this production comes from The Mosaic Foundation (of R. & P. Heydon). Additional support is provided by media partners, WJR and Michigan Radio. All performances will be held at The Purple Rose Theatre Company, 137 Park Street, Chelsea, Michigan 48118.

A Stone Carver tells the story of a retired stonemason who clings to the past and his son who refuses to look back. When Agostino, a seventh-generation stone carver is evicted from his home to make space for a highway, he barricades himself in his house, determined to outlast the bulldozers. In a last-ditch effort to save his father from jail, Raff, Agostino's only son, arrives at the house with his new fiancée. A battle of wills ensues, putting their already-rocky relationship to the test. Can Raff convince his father to move forward before it's too late?

Inspired by events in the playwright's own life, *A Stone Carver* was first produced in 1987 at Seattle Repertory Theatre under the title, *The Understanding*. This production will mark PRTC resident artist Rhiannon Ragland's professional directing debut (Flint, MI). The cast will feature PRTC artistic director Guy Sanville (Chelsea, MI) as Agostino, Matthew David (Flint, MI) and Charlyn Swarouth (Union City, MI). (*Editor's Note: Cast interviews and biographies are available upon request. Please contact Heidi Bennett at 734.433.7782 ext. 18 or bennett@purplerosetheatre.org*).

Founded in 1991 by acclaimed actor and Chelsea native Jeff Daniels, The Purple Rose Theatre Company (PRTC) is a leading American theatre dedicated to producing the new American play and creating opportunities for Midwest theatre professionals. The PRTC is a 501(c)(3) not-for-profit professional theatre operating under a Small Professional Theatre agreement with the Actors' Equity Association. The PRTC promotes the development of new American theatre and its practitioners, provides valuable educational opportunities for young artists, and, through consistently high quality production values, has earned the respect of local and national theatre communities.

Tickets are now on sale for *A Stone Carver*. Ticket reservations can be made by calling The Purple Rose

continued on page 2

continued from page 1

Theatre Company Box Office at (734) 433-ROSE (7673); Box Office hours are Monday through Friday from 10:00 AM – 6:00 PM. Tickets are also available for purchase at www.purplerosetheatre.org. ###

Meet the playwright

WILLIAM MASTROSIMONE

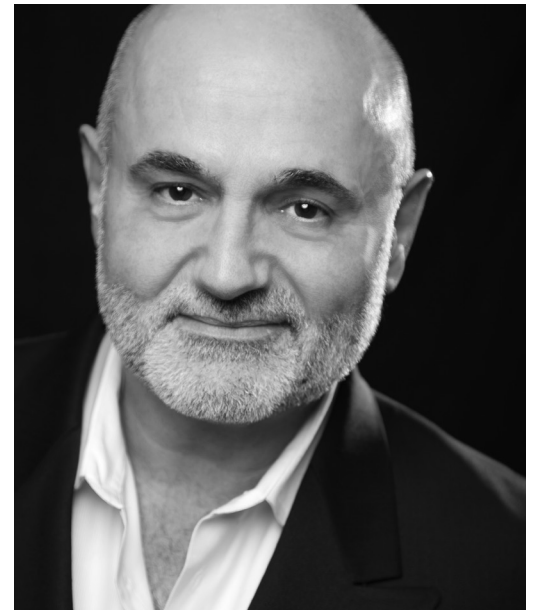
William Mastrosimone is an American playwright and screenwriter from Trenton, New Jersey. He attended high school at The Pennington School and received a graduate degree in playwriting from Mason Gross School of the Arts, a part of Rutgers University. His plays include *The Woolgatherer*, *Extremities*, *Shivaree*, and *Cat's Paw*. He also wrote *Bang Bang You're Dead*, which can be downloaded from the Internet and performed by students for free. Other plays include *The Afghan Women*, *A Stone Carver* and *Nanawatai*, upon which the film *The Beast* is based. Two other plays are *Sleepwalk*, a story again focusing on the traumas of modern teenage life, and *Dirty Business*, a play about a party girl caught between the mafia and the newly elected President of the United States. His screenwriting credits include *Into the West* and the adaptation of his play *Extremities*. He won a Daytime Emmy Award for *Bang, Bang You're Dead* and was nominated for a Prime Time Emmy for *Into the West* and *The Burning Season*.

Meet Agostino

GUY SANVILLE

Guy Sanville celebrated his sixteenth anniversary as Artistic Director of The Purple Rose Theatre Company last May. He has directed over 40 productions for the PRTC, including 25 World Premieres. He has appeared in seven plays for the Rose, most recently in *Sea of Fools* (Dickie Deerfield) and *Born Yesterday* (Harry Brock). Locally, he has also appeared at the BoarsHead Theatre and Jewish Ensemble Theatre. He has appeared in several films including *Escanaba in da Moonlight*, *Super Sucker*, *Chasing Sleep* and *The Lost Treasure of Sawtooth Island*. He is a proud member of the Stage Directors and Choreographers Society, Actors' Equity Association and Screen Actors Guild. A longtime admirer of playwright William

Mastrosimone, Sanville explains why this particular play is special to him: "A *Stone Carver* has always moved me. It's a relatively simple story about a father and his son. It's the stuff of a lot of great drama: the idea that sons are always trying to measure up to their father's notions of what it means to be a man, that moment in a father's life when he has to try to accept the man the boy has become, the sense that there is always something unfinished in the relationship. It's a story that just about every father and son can relate to."





A STONE CARVER



by William Mastrosimone • directed by Rhiannon Ragland
JANUARY 19 - MARCH 10, 2012

PERFORMANCE SCHEDULE

| | | | | | |
|------------------------|------|---------|---------------------|---------------|-----------------|
| Thursday, January 19 | 8PM | \$20 | preview w/ talkback | | |
| Friday, January 20 | 8PM | \$25 | preview w/ talkback | | |
| Saturday, January 21 | 3PM | \$25 | preview w/ talkback | | |
| Saturday, January 21 | 8PM | \$30 | preview w/ talkback | | |
| Sunday, January 22 | 2PM | \$25 | preview w/ talkback | | |
| Wednesday, January 25 | 3PM | \$20 | | preview | |
| Wednesday, January 25 | 8PM | \$20 | | preview | |
| Thursday, January 26 | 8PM | \$20 | | preview | |
| Friday, January 27 | 8PM | \$35 | | press opening | |
| Saturday, January 28 | 3PM | \$35 | | | |
| Saturday, January 28 | 8PM | \$40 | | | |
| Sunday, January 29 | 2PM | \$35 | | | |
| Wednesday, February 1 | 3PM | \$25 | | | |
| Wednesday, February 1 | 8PM | \$25 | | | |
| Thursday, February 2 | 8PM | \$25 | | | |
| Friday, February 3 | 8PM | \$35 | | | |
| Saturday, February 4 | 3PM | \$35 | | | |
| Saturday, February 4 | 8PM | \$40 | | | |
| Sunday, February 5 | 2PM | \$35 | | | |
| Tuesday, February 7 | 11AM | \$12.50 | student matinee | | |
| Wednesday, February 8 | 3PM | \$25 | | | |
| Thursday, February 9 | 8PM | \$25 | | | |
| Friday, February 10 | 8PM | \$35 | | | |
| Saturday, February 11 | 3PM | \$35 | | | |
| Saturday, February 11 | 8PM | \$40 | | | |
| Sunday, February 12 | 2PM | \$35 | | | |
| Tuesday, February 14 | 8PM | \$25 | | | Valentine's Day |
| Wednesday, February 15 | 8PM | \$25 | | | |
| Thursday, February 16 | 8PM | \$25 | | | |
| Friday, February 17 | 8PM | \$17.50 | | | Ford Friday |
| Saturday, February 18 | 3PM | \$35 | | | |
| Saturday, February 18 | 8PM | \$40 | | | |
| Sunday, February 19 | 2PM | \$35 | | | |
| Wednesday, February 22 | 3PM | \$25 | | | |
| Wednesday, February 22 | 8PM | \$25 | | | |
| Thursday, February 23 | 8PM | \$25 | | | |
| Friday, February 24 | 8PM | \$35 | | | |
| Saturday, February 25 | 3PM | \$35 | | | |
| Saturday, February 25 | 8PM | \$40 | | | |
| Sunday, February 26 | 2PM | \$35 | | | |
| Wednesday, February 29 | 3PM | \$25 | | | |
| Wednesday, February 29 | 8PM | \$25 | | | |
| Thursday, March 1 | 8PM | \$25 | | | |
| Friday, March 2 | 8PM | \$17.50 | | | Ford Friday |
| Saturday, March 3 | 3PM | \$35 | | | |
| Saturday, March 3 | 8PM | \$40 | | | |
| Sunday, March 4 | 2PM | \$35 | | | |
| Tuesday, March 6 | 11AM | \$12.50 | student matinee | | |
| Wednesday, March 7 | 3PM | \$25 | | | |
| Wednesday, March 7 | 8PM | \$25 | | | |
| Thursday, March 8 | 8PM | \$35 | | | |
| Friday, March 9 | 8PM | \$35 | | | |
| Saturday, March 10 | 3PM | \$35 | | | |
| Saturday, March 10 | 8PM | \$40 | | | closing night |