

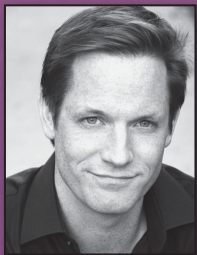
Guy Sanville
Artistic Director



Katie Doral
Managing Director



Michelle Mountain
Resident Artist &
Apprentice Chief



Matt Letscher
Associate Artist/Playwright,
Gaps in the Fossil Record



Megan Pinto
Emerging Playwright &
Past Apprentice

the Purple Rose 25 years

*Strengthening the
Power to Premiere!*

Dear Friends,

Our patrons and artists have shared the joys of live theatre, great storytelling and award-winning American plays. We're indebted to friends whose generosity in countless ways made 25 years possible!

Today, resources are stretched to maintain our bold artistic vision. Upgrading facilities used to inform, entertain and provide the finest training available anywhere is an increasing challenge.

This milestone year, your support can leverage up to \$74,000 from the Michigan Council for Arts & Cultural Affairs. Matching both operational *and* capital support to raise and restore our aging roof/HVAC systems are at stake, so your gifts now (modest or magnificent) will protect our Anniversary season from any interruption.

In addition, our Purple Rose reputation is built on new work: premieres are 60% of what we do and anchor our mission. That involves some risk and **gifts of faith** to foster original American plays. If you value new ideas, please consider making a catalyst gift to our **World Premiere Fund** this year, in addition to your annual gift. Our next level of excellence is reachable with investment in impressive talents, imagination and innovation.

Great theatre will continue to flourish if our Purple Rose remains in prime shape to deliver the finest programs available. **Annual and Special Gifts** help us raise nearly \$1 million/year to strengthen our ability to premiere the next 25, 50 or 100 plays.

- Your support is critical to the art that comes to life in the hands of professionals in appropriate facilities.
- Your contributions make our 300 performances per season possible — the driving force behind 77 jobs, and nearly \$4 million in economic return to Michigan.

The next chapter of Purple Rose achievement is in your hands, as our theatre strives to deliver the stories you long to hear.

Thank you for giving generously,

Peter Feeney
Vice Chair

Guy Sanville
Artistic Director

P.S. Donors making gifts totaling \$2,500 or more will receive a complimentary, signed edition of the new 25th Anniversary volume, *The Purple Rose of Chelsea* — a perfect gift for the theatre-lover in your life!

BOARD OF DIRECTORS: Jeff Daniels, Ex Officio | Steven K. Hamp, Co-Chairman | Sheila Ford Hamp, Co-Chairman
Peter Feeney, Vice Chairman | John Mann, Treasurer | Craig Common, Secretary | John Colone | Philip J. Curtis
Ruth Roby Glancy | H. Ron Griffith | Neil Hawkins | David Larsen | Maria Leonhauser | George Moses | Timothy L. Nasso
Guy Sanville, Artistic Director | Katie Doral, Managing Director | Gerie Greenspan, Development Director

The Purple Rose
Theatre Company
137 Park Street
Chelsea, MI 48118
734-433-7782

www.purplerosetheatre.org