



the  
**PurpleRose**  
theatre company



# ROADSIGNS

A WORLD PREMIERE BY **JEFF DANIELS**  
DIRECTED BY **GUY SANVILLE**

MUSIC BY **JEFF DANIELS & BEN DANIELS**



## ROBERTS PAINT & BODY

*"We meet the nicest people by accident."*

Full service body shop specializing in collision repair, auto frame work, and glass repair for all makes and models. Fully licensed and insured facility in Chelsea, Michigan.

610 East Industrial  
Chelsea, MI 48118  
(734) 475-1149  
[www.robortspb.com](http://www.robortspb.com)



## ROBERTS PAINT & BODY Now Offers Auto Detailing

Call (734) 475-1149 or email [detail@robortspb.com](mailto:detail@robortspb.com) for details, gift certificates, or to schedule your next detailing.

610 East Industrial  
Chelsea, MI 48118  
[www.robortspb.com](http://www.robortspb.com)

***“Lanford Wilson is one of the few artists in our theatre who can truly make America sing.” -Frank Rich***

It is not a stretch to say that were it not for Lanford Wilson’s belief in a tall mega talented young actor from Michigan named Jeff Daniels over 40 years ago, you probably would not be sitting in this special place, about to see a new American play.

The play you are about to see was inspired by a poem written by Lanford and turned into a song by Jeff.

It is one of many beautiful and historical collaborations by these two giants of the American theatre.

Their work has much in common, especially an unwavering compassion for those tortured souls whom most would call “losers”. And a shared sense of place. The places in their work are characters in their plays just as critical to their stories as anyone who speaks words. The people in them rise like spirits from the places in their stories. And, they are both masters at finding the humanity in everyone and everyplace they put on stage.

We bring the teachings and spirit of both of these incredible artists to work with us every day.

Thank you for making this place possible through your support of our endeavors.

A handwritten signature in black ink that reads "Guy Sanville". The signature is written in a cursive, flowing style.

Guy Sanville  
Artistic Director

**A Special Thank You to our  
2019-2020 Season Underwriters:**

Ford Motor Company Fund

The Hamp Family

The Matilda R. Wilson Fund

Richard & Jane Manoogian Foundation

The Shubert Foundation

**2019-2020 Production Sponsors:**

Chelsea Comfort Inn &  
Village Conference Center

Chelsea Rhone, LLC

Chelsea State Bank

Philip J. Curtis

Domino's

Neil & Annmarie Hawkins

This production is supported in part by an award from the  
MICHIGAN COUNCIL FOR ARTS AND CULTURAL  
AFFAIRS and the NATIONAL ENDOWMENT FOR THE ARTS.





JEFF DANIELS  
Founder

GUY SANVILLE  
Artistic Director

KATIE HUBBARD  
Managing Director

with media partners  
**Michigan Radio**  
**ChelseaMich.com**  
**HOME.fm**

presents

# ROADSIGNS

by Jeff Daniels

music by Jeff Daniels & Ben Daniels

Set Design by  
SARAH PEARLINE

Costume Design by  
SHELBY NEWPORT

Lighting Design by  
NOELE STOLLMACK

Sound Design by  
ANGIE KANE

Properties Design by  
DANNA SEGREST

Choreographed by  
RHIANNON RAGLAND

Music Direction &  
Arrangements by  
ANGIE KANE

Stage Managed by  
DEVIN FAUGHT\*

Directed by  
**GUY SANVILLE<sup>+</sup>**

Based on the song "Roadsigns"  
by  
Lanford Wilson and Jeff Daniels

\*member of Actors' Equity Association,  
the Union of Professional Actors and Stage Managers in the United States.

+member of the Stage Directors and Choreographers Society,  
a national theatrical labor union.

**Brauer**  
PRODUCTIONS, INC

*"You're right Jeff, they do look like ants"*

530 S. Union Street  
Traverse City, MI 49684  
(231) 941-0850  
www.brauer.com

**CAFE & COFFEE BAR**  
COFFEE • EDIBLES • ART

FEATURING: CRAFT BEERS & FINE WINES

**101 N. MAIN ST.**  
DOWNTOWN CHELSEA MAIN & MIDDLE ST.

**734-433-4226**

**FLINT REPERTORY THEATRE** *A Program of the Flint Institute of Music*

**ONE FLEW OVER THE CUCKOO'S NEST**

By DALE WASSERMAN  
Adapted from the book by KEN KESEY

**MARCH 13-22**  
810.237.7333  
FlintRep.org/cuckoos-nest

Production sponsored by CHARLES STEWART HARDING FOUNDATION

2019-2020 Flint Rep Signature Series is sponsored by WHITING FOUNDATION

This program and/or service is funded in whole or in part by the Genesee County Arts Education and Cultural Enrichment Millage funds. Your tax dollars are at work.

# CAST OF CHARACTERS

Lanny . . . . .	David Bendena*
Walter . . . . .	Tom Whalen*
Robert. . . . .	Richard McWilliams*
Harmon. . . . .	Rusty Mewha*
Esther . . . . .	Ruth Crawford*
Tanesha . . . . .	K Edmonds*
Francine . . . . .	Kristin Shields*
Darlene . . . . .	Caitlin Cavannaugh*

\*member of Actors' Equity Association, the Union of Professional Actors and Stage Managers in the United States.

## PLACE & TIME:

The play's two main settings are a small coffeehouse folk club in January, 2020, and aboard a bus going north through central Illinois in July, 1978. Flashbacks to other times and places occur within these two locations.

## PLEASE NOTE

**There will be no intermission during the performance.**

The making of photographs and/or recordings inside the theatre is strictly prohibited.

Please keep the aisles clear for actors' entrances and exits.

**WHEN YOUR IMAGE  
IS ON STAGE...**

turn to Foresight Group for  
a perfect performance



**FORESIGHT  
GROUP**

Print Solutions That Deliver

**734.971.1700**

5204 JACKSON ROAD, SUITE 1  
ANN ARBOR, MI 48103

**[www.foresightgroup.net](http://www.foresightgroup.net)**

**Polly's  
Country  
Market**

lower prices throughout  
the store ... that's

***Total Bottom Line  
Savings!***

*7001 Dexter-Ann Arbor Rd.*

*734-424-9600*

*1101 M-52, Chelsea*

*734-4758283*

**CHELSEA LUMBER CO.**

ENJOYS SUPPORTING  
THE POSITIVE GROWTH OF CHELSEA  
AND  
The Purple Rose Theatre Company



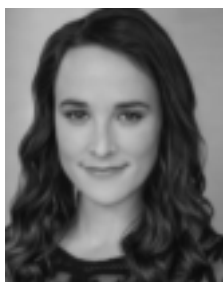
ONE OF THE STATES LARGEST AND MOST MODERN  
HOME SUPPLY CENTERS  
JUST NORTH OF I-94 ON THE WEST SIDE OF MAIN ST. IN CHELSEA



## CAST OF CHARACTERS



DAVID BENDENA (*Lanny*) *Roadsigns* is David's 12th production with The Purple Rose, where he is very proud to be a Resident Artist. Big thanks to Jeff, Guy, Angie, 2188 Studios, and everyone on this ride. He'd also like to thank anyone who ever taught him anything about music. Especially his brother.



CAITLIN CAVANNAUGH (*Darlene*) is honored and psyched to be at The Purple Rose again after the Sherlock Holmes Adventures, *All My Sons*, *Never Not Once*, *Willow Run*, and *Harvey*. Some other favorite credits include *Twelfth Night* (Viola) and *Carousel* (Carrie) with Texas Shakespeare Festival and *Marat/Sade* (Jacques Roux) at the Sabanci International Theatre Festival in Adana, Turkey. She is a proud graduate of Northern Illinois University (BFA Acting) and Moscow Art Theatre School (Certificate in Acting) and is represented by Shirley Hamilton in Chicago. All the love and gratitude for her #1 supporter, her mom, her grandparents, and to Guy, Michelle, Rhi, Angie, Katie, Amy, Devin, Thomas, Ben, Luke, the apprentices, and every single person in The Purple Rose family for believing in and supporting her, and to Jeff for bringing her many Megabus trips to life. More at [www.caitlincavannaugh.webs.com](http://www.caitlincavannaugh.webs.com).

**FORD  
FRIDAYS**

The generous underwriting of the **Ford Motor Company Fund** is providing support for two special performances of *Roadsigns* with half-priced tickets and post-show talk-backs.

**February 7 @ 8pm**  
**March 6 @ 8pm**

**Merkel**  
 FURNITURE AND CARPET ONE

f t p i  
 merkelfurniture.com

**Celebrating 94 Years  
 in Downtown Chelsea!**

**Culture Creations**

M - closed  
 T - 10-5  
 W - 12-5  
 Th, F, S - 10-8  
 Sun - 11-5

*We travel the world so you can too.*

**Unique gifts and items  
 from around the world.**

105 S. Main St. Chelsea, MI  
 734-274-2225

*Stop By Before & After The Show*

**CLEARY'S**  
**DUB**  
 FOOD • SPIRITS

**Daily Luncheon & Dinner Specials**

*Directly Across The Parking Lot From The Theatre*  
 6 HD TV'S  
*Live Entertainment Friday & Saturday Evenings*

**Hours: Mon-Sat 11:00 a.m.-midnight  
 Sunday 12 p.m.-9 p.m.**

AMERICAN EXPRESS  
 DISCOVER

**113 S. Main • Chelsea • 734-4751922**  
 www.Clearyspubchelsea.com

## CAST OF CHARACTERS



RUTH CRAWFORD (*Esther*) has previously appeared at The Purple Rose in *Welcome to Paradise*, *Harvey*, *Morning's At Seven* and *Poetry of Pizza*. She's also worked extensively at other Detroit area Equity theatres. She was in *The Gin Game* at Williamston Theatre; *Ripcord* at the Tipping Point; *Rites of Passage* at the JET; *Good People* at the Performance Network and *Arsenic and Old Lace* at Meadow Brook Theatre. As a member of the Colony Theatre in LA, her work included roles in *The Cocktail Hour*, *Ring Round the Moon*, and *Morning's At Seven*. Ruth has also been featured in a number of movies and TV shows filmed in the Detroit area including a recurring role in *Detroiters*, *Low Winter Sun*, *Flipped*, *Trust* and *Guest Artist* with Jeff Daniels.



K EDMONDS (*Tanisha*) is proud to return to The Purple Rose stage! She was last seen here in the smash hit *Willow Run*. Some of K's many credits include *Devil's Music* (Bessie Smith) and *The Revolutionists* (Marianne); both at Theatre Nova, *Good People* (Kate) at Open Book Theatre, *Rosie the Riveter* (Bernice) at Wild Swan Theatre, *Ain't Misbehavin'* (Armelia) at Performance Network Theatre and *Ruined* (Josephine) with Plowshares Theatre. On stage isn't the only place K shines; she is an accomplished musician, writer, as well as an award-winning director (Boxfest Detroit 2011), which enabled her to begin her multimedia company, K Edmonds Media. A graduate of Second City Detroit and the International Academy of Design and Technology, with a certificate in hilarity and a B.F.A in Digital Media Production respectively. K feels blessed to have the support of her Mom, Beverly, and to get such great inspiration from her daughter Kemi, and all the talented people she has had the pleasure to work with throughout her career.

BEST WISHES TO THE  
PURPLE ROSE



**CHELSEA PHARMACY**  
FREE DELIVERY  
HALLMARK CARDS & GIFTS



Mon-Fri 9 a.m.-7 p.m.  
Sat 9 a.m.-5 p.m.

**1125 S. MAIN ST. CHELSEA**  
**734-475-1188**

**BIGGBY**  
COFFEE

UPLIFTING  
THE PURPLE ROSE  
THEATRE

Show this ad



& receive

**FREE BOGO**

specialty beverage  
(hot, iced or frozen)

1171 S Main St • Chelsea

Good at this location only. Not good  
with any other offer. Expires: 12/31/20  
CODE 205954

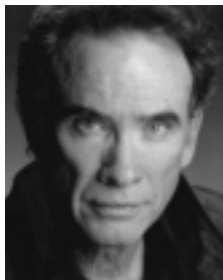
for franchise info [www.biggbyc.com](http://www.biggbyc.com)

JUST AROUND THE CORNER FROM  
THE THEATER DISTRICT.

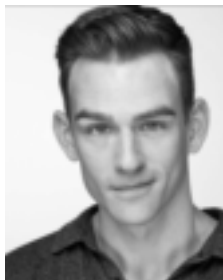


MON CLOSED TUE-THU 11-10 FRI-SAT 11-11 SUN 11-9 SUN Brunch 11-3  
112 S Main Street • Downtown Chelsea • [commongrill.com](http://commongrill.com) • 734.475.0470

## CAST OF CHARACTERS



RICHARD McWILLIAMS (*Robert*) was last seen on the Purple Rose stage in *All My Sons*. He is a Purple Rose Resident Artist where he has also appeared in *Harvey*, *Morning's At Seven*, *33 Variations*, *The Vast Difference*, and *Annapurna*. Other theatre credits include *The Price* (Syracuse Stage and Geva Theatre Center), *Long Day's Journey into Night* (Greenbrier Valley Theatre), *Broadway Bound* (Drury Lane Theatre), *A Moon for the Misbegotten*, *Richard III* (Kansas City Repertory Theatre) and *Desire Under the Elms* (The Guthrie Theater). Broadway: *Orpheus Descending*. Off-Broadway: *The Night Hank Williams Died* and *Macbeth*. FILM: *Guest Artist* (written by Jeff Daniels). Many thanks to Guy, Michelle, Jeff and the entire PRTC family. Love to Lindsay and Terri.



RUSTY MEWHA (*Harmon*) is honored to be a Resident Artist at the Purple Rose. PRTC credits: *All My Sons*, *Never Not Once*, *Diva Royale*, *Sherlock Holmes and the Adventure of the Elusive Ear*, *God of Carnage*, *Harvey*, *Morning's at Seven*, *2AZ*, *PRTC Spring Comedy Festival: Lovers, Liars, and Lunatics*, *The Vast Difference*, *Miles and Ellie*, and *Honus and Me*. Huge thanks to Guy, Jeff, Amy, Katie, the amazing apprentices, stage management team, our Board, and you, the audience. All for love and beauty. Thanks to Robyn, Sola, Asher, Chaya, and Ellie, for the endless love and support.

# VARSETY

LINCOLN

We Make You

#1

— FIND OUT WHY! —

Certified  
Pre-Owned  
Lincolns  
Save You  
Thousands!!



The All-New  
2020 LINCOLN AVIATOR

248-305-5300 • Novi/Wixom  
VarsityLincoln.com

*Delivering One Unforgettable Performance After Another!*  
**Varsity Supports Chelsea & The Purple Rose.**

# VARSETY

FORD

800-875-FORD  
Ann Arbor

VarsityFord.com

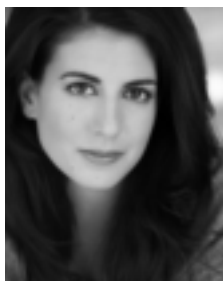
**Open Saturdays!**



2020 Ford F-150

**Get the Best!**  
**Move Up to Varsity!**  
**Over 2,000 vehicles in stock!**

## CAST OF CHARACTERS



KRISTIN SHIELDS (*Francine*) is a proud Resident Artist at The Purple Rose. She originated the role of Mary Catherine in *Diva Royale*, was an understudy in *All My Sons* and *Flint*, and is excited to be a part of more upcoming productions this season. Most recently, she appeared as Catherine in *The Heiress* with The Lakeside Theatre Company in Toledo, OH. NYC theatre credits include plays at The Workshop Theatre, Fringe NYC, and Musicals Tonight!; 1st National Tour: *Dora the Explorer* in Nickelodeon's *GO DIEGO GO LIVE!*; Commercials for L'Oreal, LG, Orbit Gum, Dick's Sporting Goods and more. BFA in Musical Theatre from The University of Michigan. Sincere thanks to Guy, Jeff, Angie, Rhi, Devin and the whole Rose tribe for cultivating this special home for Michigan artists. Love to Scottie, my sweet boys, and our incredibly supportive family.



TOM WHALEN (*Walter*) was last seen on The Purple Rose stage as Escoffier in last fall's production of *Sherlock Holmes and the Adventure of the Fallen Soufflé*. He is a Purple Rose Resident Artist where he has appeared in *All My Sons*, *Sherlock Holmes and the Adventure of the Elusive Ear*, *Harvey*, *Morning After Grace*, *Morning's At Seven*, *The Odd Couple*, *Casting Session*, *2AZ*, *The PRTC Spring Comedy Festival: Lovers, Liars, & Lunatics*, *The Vast Difference*, *Our Town*, *Escanaba*, *Panhandle Slim & The Oklahoma Kid*, *Corktown*, *The Glass Menagerie*, *The Good Doctor*, *Let It Be*, *Guys On Ice* and *Orphan Train: An American Melodrama*. Tom has also designed sound for numerous PRTC productions. He has performed locally at the BoarsHead Theatre, Jewish Ensemble Theatre, Meadow Brook Theatre, Hilberry Repertory, The Gem Theatre, The Attic Theatre and Performance Network. His many appearances include *The Cherry Orchard*, *Twelfth Night*, *Moonlight and Magnolias*, *Summer and Smoke* and *Little Shop of Horrors*.



*In Chelsea, we remember our past,  
enjoy the present, and plan for the future.*

proud of  
The Purple Rose and its  
111th Successful Production!  
[www.chelseamichamber.org](http://www.chelseamichamber.org)

222 S. MAIN ST., SUITE B  
Chelsea • Michigan 48118  
734-475-1145

**Beer – Wine – Cocktails**



**115 S. Main St.  
Rear entrance from the  
parking lot**

---

**Join us for lunch, dinner,  
or drinks & dessert after the  
show!**

107 & 109 S. Main St. Chelsea, MI 48118

*While you're out on the town, we hope you'll stop in!*



*A unique blend of  
fashion, footwear and accessories*

*Featuring*

*Red Wing Boots  
Desigual Fashions  
Brighton*

*Stormy Kromer  
Woolrich  
Smart Wool Socks*

*Parsley & Sage  
Aventura & Ecoths  
Scully Leathers*

[www.vogelsandfosters.com](http://www.vogelsandfosters.com)

734-475-1606



Mon.-Wed. 10-6 • Thur.-Sat. 10-8 • Sun. 12-5



## PLAYWRIGHT



JEFF DANIELS (*Playwright & Composer*) has premiered nineteen full-length plays at the PRTC: *Shoe Man*, *The Tropical Pickle*, *The Vast Difference*, *Thy Kingdom's Coming*, *Escanaba in da Moonlight*, *Apartment 3A*, *Boom Town*, *Across the Way* (2002 American Theatre Critics Association Best New Play Finalist), *Norma & Wanda*, *Guest Artist* (2006 ATCA Runner-Up), *Escanaba In Love*, *Panhandle Slim & The Oklahoma Kid*, *Escanaba*, *Best of Friends*, *The Meaning of Almost Everything* (2013 ATCA Nominee), *Casting Session*, *Flint*, *Diva Royale*, and *Roadsigns*. He just finished performing the role of Atticus Finch in Aaron Sorkin's Broadway adaptation of Harper Lee's *To Kill A Mockingbird*.

## COMPOSER



BEN DANIELS (*Composer*) is a singer/songwriter for the Ben Daniels Band, an audio engineer for 2188 Studio in Chelsea, MI and a comedian at home. As a Resident Artist of The Purple Rose Theater Company, Ben helped with the music for *Roadsigns*. He hopes you enjoy the ride.

SUBSCRIBE  
TO eNEWS

Receive Purple Rose news in your inbox: behind-the-scenes information, invitations to events, exclusive ticket discounts and more.

Visit [PurpleRoseTheatre.org](http://PurpleRoseTheatre.org)



BY CHOICE HOTELS

**Comfort & Convenience**

*The Chelsea Comfort Inn is a great place to stay after the show! The Village Conference Center is newly renovated with a talented on-site chef. It is the ideal choice for your next meeting or special event, with seating from 10-250.*



**Purple Rose Packages**

*(Advanced booking required)*

**734-433-8000**

1645 Commerce Park Drive, Chelsea, MI 48118  
[www.comfortinnchelsea.com](http://www.comfortinnchelsea.com)

**Reinhart**  
REALTORS

**Supporting the  
Local Arts  
Community**

**734-747-7888**

[www.ReinhartRealtors.com](http://www.ReinhartRealtors.com)

*The Real estate leader in  
Ann Arbor for over 49 years.*

You'll do  
whatever it takes  
to help her  
succeed.



Make sure  
that includes your  
**Estate Plan.**

Estate Planning is more than a will. It helps individuals and families prepare for their personal, medical, family, and financial affairs in the event of death, serious illness, or disability. Proper planning can help you and your family plan for a number of real-life issues.

Curtis, Curtis & Brelinski is a long-time supporter of Purple Rose Theatre.

**Curtis Curtis**  **Brelinski, P.C.**  
ATTORNEYS | EST. 1901

Attorneys and Advisors to Businesses and Individuals

[curtiscurtislaw.com](http://curtiscurtislaw.com) | 517.787-9481

## DIRECTOR



GUY SANVILLE (*Director*) has served as Artistic Director of the Purple Rose since May 1, 1995. *Roadsigns* is the 62<sup>nd</sup> show Guy has directed for The Purple Rose including 43 world premieres. Credits include world premieres of *Flint*, *Escanaba in da Moonlight*, *Guest Artist*, and *Across the Way* by Jeff Daniels (Second place Harold and Mimi Steinberg/American Theatre Critics Association Award), *Book of Days* (Winner Best New Play Harold and Mimi Steinberg/American Theatre Critics Award) and *Rain Dance* (PRTC and Off Broadway productions) by Lanford Wilson and the world premiere of *Gaps in the Fossil Record* by Matt Letscher and *Willow Run* by Jeff Duncan. Member: Society of Stage Directors and Choreographers, Actors' Equity Association, and SAG-AFTRA. For Rose.



ANGIE KANE (*Musical Director & Sound Designer*) is a proud Resident Artist here at The Purple Rose. She previously served as the Vocal Director, Assistant Director, and Understudy on *Willow Run* and Sound Designer for *Casting Session* and *Steel Magnolias* here at The Rose. Most recently she assistant directed *All My Sons* before setting out to attempt a thru hike of the Pacific Crest Trail last spring—completing approximately 900 miles before returning home. Angie has been given the opportunity to work in many different capacities in this great theatre, including having the honor of directing *Talley's Folly* by Lanford Wilson in 2015. She would like to thank Guy for his support and for continuing to welcome her into his corner of the ring, to Jeff for the opportunity to step into and create this world, to Rhi, Ben, Michelle, Amy, Katie, the amazing apprentices and the entire staff of The Purple Rose—cheers to you, my friends—We are the music makers. We are the dreamers of dreams. For my parents, Kathy and Bob, who have supported me through it all, and continue to nurture my musical soul.

Give <sup>Where</sup> You Live



Volunteer with us  
Monday thru Saturday!

**Kiwanis**  
Thrift Sale



*Official Sponsor of  
Warm The Children*

100 N. Staebler Rd.

Fridays & Saturdays | 9am-1pm

734-368-9738 | a2kiwanis.org | f @

## The Find

*Upscale Family Resale  
Downtown Chelsea*

136 W Middle St.  
Chelsea, MI 48118  
Ph: (734) 593-7044

Tue-Sat 10-4pm  
Sunday 12-4pm  
or by appointment  
for Purple Rose Patrons



***Mediterranean, American, Tex-Mex, Pizza, Pasta***

Happy Hour from 3:00pm-6:00pm Monday-Friday  
Half off Appetizers, \$5 House Wine, \$4 Well Drinks,  
\$2 off Featured Drinks & Cocktails, and \$1 off all Beer

*Karaoke every Saturday from 10:30pm-1:00am*

**734-475-7714**

1120 S. Main St., Chelsea, MI 48118  
Located in the Chelsea Shopping Center,  
next to Family Farm and Home

Hours:

M-Th: 11:00am-11:00pm  
Friday: 11:00am-12:00am  
Saturday: 11:00am-1:00am  
Sunday: 12:00pm-10:00pm

## DESIGNERS

SHELBY NEWPORT (*Costume Designer*) is an associate professor of theatre at the University of Michigan-Flint, where she is currently serving as the Associate Provost and Dean of Undergraduate Studies. She received her M.F.A. from Purdue University and completed her undergraduate studies at Cornell College. She designs regionally at Tipping Point Theatre, Kickshaw Theatre, Detroit Public Theatre, Flint Repertory Theatre, and is a Resident Artist here at The Purple Rose Theatre Company. Her designs have been seen internationally in London and Margate, England. Shelby is thrilled to be designing costumes for *Roadsigns*, It is her ninth production at PRTC, previously she designed costumes for *Diva Royale*, *Flint*, *God of Carnage*, *Smart Love*, *Morning After Grace*, *Casting Session*, *Superior Donuts*, and *A Stone Carver*. You can see more of Shelby's work at [www.shelbynewport.com](http://www.shelbynewport.com).

SARAH PEARLINE (*Scenic Designer*) has worked as a set and projection designer with such companies as Circus Flora, St. Louis Symphony, Experimental Theatre Wing, Titan Theatre Company, Prospect Theatre Company, SoHo Think Tank, Nickelodeon Networks, and NY Stage and Film. Sarah is an Associate Professor in the Theatre and Dance department at Wayne State University and a graduate of the Yale School of Drama. Locally, she has had a wonderful time working with Hope Summer Rep Theatre, Detroit Public Theatre, Carrie Morris Arts Production and PuppetArt Theatre, Satori Circus and the DIA. As a Resident Artist here at PRTC, she previously designed *All My Sons*, *Never Not Once*, *Willow Run*, *Harvey*, *Vino Veritas*, *Morning's At Seven* and *Talley's Folly* and is grateful to join the artists here for another fabulous show!

ADVANCE  
TICKETS

DID YOU KNOW?

Annual Purple Rose donors of \$250 or more may purchase tickets two weeks before the general public.

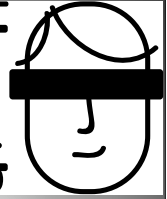
*A Place Somewhere  
Bed and Breakfast*

Corinne & Bob Opiteck  
196 William Street  
Stratford, ON N5A 4Y3  
(519)273-2157  
somewhere@dsemail.com  
www.somewherebb.com

10% Discount for Theatre goers!



~~SECRET~~  
CRISIS  
COMICS



Secret Crisis Comics  
1161 S Main Street  
Chelsea, MI 48118  
734.593.7110

Instagram @TheSecretCrisis  
Twitter @TheSecretCrisis

— ballet chelsea presents —

# GERSHWIN!



**March 2020**

CHELSEA & JACKSON



FOR MORE INFORMATION OR TICKETS VISIT: [balletchelsea.org](http://balletchelsea.org)

## DESIGNERS

DANNA SEGREST (*Properties Designer*) has enjoyed the PRTC family since volunteering as backstage dresser for our first production, *Blush at Nothing*. She became an Equity Stage Manager for *Shoe Man* by Jeff Daniels in 1991 and stage managed many shows while training some of the PRTC's first apprentices. Danna now wears many hats as Resident Properties Designer, a Resident Artist, Archival Photographer and Box Office Assistant. Danna is grateful for this opportunity to design the props once again for the production of a Jeff Daniels show. Thanks to Wade and Reeve for taking this ROAD and heeding the SIGNS with Amazing Grace.



NOELE STOLLMACK (*Lighting Designer*) Noele's lighting has appeared onstage at The Brooklyn Academy of Music, Sydney Opera House, Carnegie Hall, The Library of Congress Theatre, as well as the opera companies of Santa Fe, Ontario, Houston, Portland, Vancouver, New Orleans, Nashville, Madison and Milwaukee. Regional design for the theatre includes Wisconsin's Chamber Theatre, Renaissance Theaterworks, Skylight Music Theatre, American Players Theatre, Forward Theatre, First Stage Children's Theatre and Baltimore Center Stage. Some notable examples of Noele's scenic realization and set design include Meredith Monk's international tours of *mercy & impermanence*, *Giulio Cesare in Egitto*, *Albert Herring*, *Dido and Aeneas*, *Venus and Adonis*, *Rio de Sangre*, *Macbeth*, *Tristan und Isolde* and *Magic Flute* for the Florentine Opera, *Rape of Lucretia* at Toledo Opera, *Pagliacci* with Columbus Opera, and *Mirandolina* for the Milwaukee Rep. As Lighting Director for the Houston Grand Opera, Noele supervised lighting for over 50 operas and designed such productions as Andrei Serban's *Elektra*, Dr. Jonathan Miller's *Der Rosenkavalier* and the world premieres of *Harvey Milk*, *Desert of Roses* and *Dracula Diary*.

Jackson's Leading  
Source for News,  
Information and  
Entertainment. JTV is  
Jackson TV.



Watch JTV on Comcast, AT&T U-Verse,  
WOW, Roku, Amazon Fire TV and  
online at [www.jtv.tv](http://www.jtv.tv).



*The perfect ending to a romantic night  
on the town or your next getaway!*



Chelsea House Victorian Inn, the  
only lodging in downtown Chelsea  
blends Victorian Charm with  
modern essentials:

Premium Room Amenities, Private Baths,  
Hot Breakfast, WIFI, Cable, AC  
Innkeeper can arrange: Purple Rose Theatre  
Tickets, Dinner at The Common Grill &  
activities to complement your stay



[www.chelseahouseinn.com](http://www.chelseahouseinn.com)

118 East Middle Street, Chelsea, MI 48118  
Make reservations online or call 734-475-2244



## STAGE MANAGEMENT

DEVIN FAUGHT (*Stage Manager*) is a proud Resident Artist and former apprentice of The Purple Rose Theatre Company. Previous shows on the stage management team include *God of Carnage*, *Flint*, *Sherlock Holmes and the Adventure of the Elusive Ear*, *Willow Run*, *Diva Royale*, *Never Not Once*, *All My Sons*, *Welcome to Paradise*, and *Sherlock Holmes and the Adventure of the Fallen Soufflé*. Thank you to Guy, Michelle, and Angie for their mentorship. Thank you Katie, Amy, Aubrey, and Abby for your tireless efforts. Thank you Megan, Anna, and Jessica. Double thank you to Thomas. And thank you, Jeff, for an artistic home.

ANGIE KANE (*Assistant Stage Manager*) is a proud Resident Artist here at The Purple Rose. *Roadsigns* mark her 18th production as an SM here at The Rose since 2013. She is thrilled to have the opportunity to serve this new work in so many ways. Thanks to this incredible cast, crew, and production team, and love to Devin and Thomas... cheers to everything this year holds.

while you're in town...  
experience something

Chelsea

www.chelseamich.com

Use your phone to view our  
community calendar & directory  
for dining, shopping, attractions,  
fun in the outdoors, lodging & more!



**Breakaway where the Food and Service is Great  
and the Fun never ends !**

Sports, Food, Drinks and Fun • Everyday Specials •

We offer Elegant banquet rooms for special events!

**Open daily AT 10.00 A.M.**

**501 Coliseum Drive, Chelsea, MI 48118**

**(behind Chelsea Lumber upstairs at the arctic coliseum)**

**734-475-9999**

**Web site: [breakaway.arcticcoliseum.net](http://breakaway.arcticcoliseum.net)**

**Present this program, Purple Rose ticket or ticket stub,  
buy one entree get the 2nd entrée of equal or lesser value half off!**

A black and white advertisement for two cleaning services. The top section is for "Chelsea Cleaners & Shirt Laundry" and lists services like dry cleaning, leather, drapes, feather pillow cleaning, wedding gowns, and alterations. It provides the address "113 Park • Chelsea Just East of Main" and the phone number "475-9169". The bottom section is for "Village Cleaners" with the address "10940 S M-52 • Manchester" and the phone number "428-9630".

**Chelsea Cleaners**  
**& Shirt Laundry**

**DRY CLEANING • LEATHER • DRAPES**  
**FEATHER PILLOW CLEANING**  
**WEDDING GOWNS • ALTERATIONS**

113 Park • Chelsea  
Just East of Main **475-9169**

**Village Cleaners**  
10940 S M-52 • Manchester **428-9630**

## FOUNDER

JEFF DANIELS has premiered nineteen full-length plays at the PRTC: *Shoe Man*, *The Tropical Pickle*, *The Vast Difference*, *Thy Kingdom's Coming*, *Escanaba in da Moonlight*, *Apartment 3A*, *Boom Town*, *Across the Way* (2002 American Theatre Critics Association Best New Play Finalist), *Norma & Wanda*, *Guest Artist* (2006 ATCA Runner-Up), *Escanaba In Love*, *Panhandle Slim & The Oklahoma Kid*, *Escanaba*, *Best of Friends*, *The Meaning of Almost Everything* (2013 ATCA Nominee), *Casting Session*, *Flint*, *Diva Royale* and *Roadsigns*. He just finished performing the role of Atticus Finch in Aaron Sorkin's Broadway adaptation of Harper Lee's *To Kill A Mockingbird*.

## ARTISTIC DIRECTOR

GUY SANVILLE is a professional actor, director, writer, and teacher. He celebrates his 25th anniversary as Artistic Director in May 2020. He has directed over 60 plays for the PRTC, including over 40 world premieres. In addition, he teaches workshops and lectures at the Purple Rose and around the country. He is a proud member of Actors' Equity Association, SAG/AFTRA, and the Stage Directors and Choreographers Society.

## MANAGING DIRECTOR

KATIE HUBBARD is so pleased to be managing the business of The Purple Rose for the last 6 years. She previously lived in Milwaukee, WI and was the General Manager of First Stage, a professional children's theater that also houses the largest theater training program of its kind in the nation, as well as being Wisconsin's leader in arts-in-education programming. Katie hails from Rochester, Michigan and received her Bachelor of Arts in Theater from Albion College in 2002. She is also a graduate of the Purple Rose Apprentice Program. Katie is a proud member of the Actors' Equity Association and received her union card back in 2003 while stage managing at The Purple Rose. She could not have this dream job without the love and support of her family.



Nik  
&  
Jamie

Support

The Purple  
Rose  
Theatre

You Should  
Too!





## JOIN THE CONVERSATION



find us on Facebook!  
[www.facebook.com/PurpleRoseTheatre](http://www.facebook.com/PurpleRoseTheatre)



follow us on Twitter!  
[www.twitter.com/PurpleRoseTheat](http://www.twitter.com/PurpleRoseTheat)



watch us on YouTube!  
[www.youtube.com/user/PurpleRoseTheatreCo](http://www.youtube.com/user/PurpleRoseTheatreCo)

# STATESIDE



If It Matters  
To Michigan,  
You'll Hear It  
On *Stateside*

*Stateside* with April Baer,  
Michigan's daily statewide talk show.

Mon-Fri at 3 p.m. and 10 p.m.



**MICHIGAN  
RADIO** npr

MICHIGAN'S NPR NEWS LEADER

91.7 FM Ann Arbor/Detroit

# 2019 RUSTIC ROSE THANK YOU



Thank you to our generous 2019 Rustic Rose fundraiser sponsors and everyone who attended and contributed to our event!

**DTE**  
Foundation



Chelsea Rhone LLC

CHEMICAL BANK

**SHINOLA**  
DETROIT



Encompass  
Financial Partners

**ASSETMARK**

**MCLAREN WEALTH**  
STRATEGIES

**CSB**  
CHELSEA  
STATE BANK

Maria Kelly & Peter Largen

Antoinette Pilzner & Daniel Moons

**American**  
CREDIT UNION

**FORESIGHT GROUP**  
Fine Solutions That Deliver



OUTLIERS LLC

**RICK TAYLOR**  
REAL ESTATE

Reinhart  
REALTORS

**JEFF KLING** | Reinhart  
REALTORS

**LANGETWINS**  
FAMILY WINERY AND VINEYARDS

**Russell VIDEO**  
Script to Screen

**Vintage Barn Boutique**

**THRIVENT FINANCIAL**  
Connecting Faith & Finance for good™

**Village CONFERENCE CENTER**



# sean carter photography

[seniors.scarterphoto.com](http://seniors.scarterphoto.com)



Now booking Class of 2021 Seniors!





LA JOLLA  
FINE JEWELRY

111 SOUTH MAIN ST. • CHELSEA, MI 48118 • 734-475-0717



# SILVER MAPLES *of Chelsea*

RETIREMENT NEIGHBORHOOD

## *The Arts:*

BALANCED MIND, BODY &  
SOUL IS POSITIVE AGING.

VISIT [silvermaples.org/arts-and-healthy-aging](http://silvermaples.org/arts-and-healthy-aging)

Call today for a tour ► **734.475.4111**

Locally-Owned, Non-Profit Jointly Sponsored by 5 Healthy Towns Foundation and United Methodist Retirement Communities, Inc.

**JIFFY** *mixes*

CHELSEA MILLING COMPANY



Proud to support  
The Purple Rose Theatre  
and the Community!

Tours available by appointment  
734-475-1361

[www.jiffymix.com](http://www.jiffymix.com)

take a bow

We're proud and happy to support the Purple Rose  
Theatre Company. Thank you for performing a leading role  
in our community.



Member  
FDIC

[chelseastate.bank](http://chelseastate.bank)

Ask for  
**KASASA**





## BOARD OF DIRECTORS

Jeff Daniels - Ex Officio  
 Steven K. Hamp - Board Co-Chairman  
 Sheila Ford Hamp - Board Co-Chairman  
 Peter Feeney - Vice Chairman  
 David Ligotti - Treasurer  
 Craig Common - Secretary

Peter Brown    Maria Leonhauser  
 Charles Craves    John Mann  
 Philip J. Curtis    George Moses  
 Charles Eisendrath    John J. H. Schwarz, M.D.  
 David Larsen

## PAST BOARD MEMBERS

\*Gail Bauer, \*David A. Brandon, \*Jeff Daniels,  
 \*Richard Helppie, \*William B. Holmes, Judy Dow Alexander,  
 Betty Jean Awrey, Paul Boylan, Anne Colone, John Colone, Jill Corr,  
*Honorary* Melissa Sage Fadim, Ann Feeney, Patrick Freydl,  
 Ruth Roby Glancy, Doug Graham, H. Ron Griffith, Sanjay Gupta, M.D.,  
 Neil Hawkins, Peter Heydon, Atanas Ilitch, Marcia J. MacCready,  
 Paul Martino, William Michels, Timothy L. Nasso, Michael Novak\*,  
 JoAnne Rosenfeld\*, Ben Upton, Ambassador Ron Weiser,  
 Dawn Williams, Dr. Steve Yarows

*\*designates past Board Chairpersons*

*\*deceased*

*Trust the Rabbit*



**BUMBLE'S**

DRY GOODS

120 S. Main Street, Chelsea, Michigan

(734) 433-9703

Open 7 days a week!

Monday through Saturday 10:00 a.m. to 6:00 p.m. Sunday 12:00 p.m. to 5:00 p.m.

**MRS. MASON'S**  
Dark Coffee Brittle



**BEST OF**  
**HOUR**  
REWARDS

Go ahead.  
Indulge.  
We'll leave you  
alone for a minute.

**MRS. MASON'S CO.**  
handmade premium brittle

[www.mrsasons.com](http://www.mrsasons.com)

619 S. Washington Ave, Royal Oak 48067

248-660-0675 : [info@mrsasons.com](mailto:info@mrsasons.com)

## Volunteers Needed

As a nonprofit, we rely on the generosity of others to help us carry out our efforts.

### Ushering:

The Purple Rose welcomes volunteer ushers throughout the season. This is a wonderful way to help and see a show for free!

Call (734) 433-7673

or email [Tickets@PurpleRoseTheatre.org](mailto:Tickets@PurpleRoseTheatre.org) to secure your date.

### Event Volunteers:

*Recruiting now for our 2020 Event Committee!*

We welcome anyone with varying time commitments to join our Development/Event volunteer team. Please contact our

Office Manager, Abby Rudnicki, at

[Abby@PurpleRoseTheatre.org](mailto:Abby@PurpleRoseTheatre.org) or (734) 433-7782.



## JOIN THE CONVERSATION



find us on Instagram!  
**[purplerosetheatre](https://www.instagram.com/purplerosetheatre)**



find us on LinkedIn!  
**[www.linkedin.com/company/purple-rose-theatre-company](https://www.linkedin.com/company/purple-rose-theatre-company)**



find us on Pinterest!  
**[www.pinterest.com/purplerosetheat/](https://www.pinterest.com/purplerosetheat/)**



*"Wesley's Catering is proud to work with Purple Rose Theatre on events like the 25th Anniversary Celebration and the Rustic Rose Summer Benefit. I look forward to creating something fresh and innovative for you."*

— Chef Todd Brown

**[www.WesleysCatering.com](http://www.WesleysCatering.com)**  
**(734) 646-0858**

# PRODUCTION STAFF

Assistant Stage Manager . . . . .	Angie Kane*
Musical Director & Music Arranger . . . . .	Angie Kane
Composers . . . . .	Ben Daniels
. . . . .	Jeff Daniels
Choreographer . . . . .	Rhiannon Ragland
1st Assistant Stage Manager . . . . .	Anna Jayne Szabo
2nd Assistant Stage Manager . . . . .	Jessica Klimushyn
Technical Director & Master Electrician . . . . .	Gary Ciarkowski
Scene Shop Assistants . . . . .	Lindsey Briggs
. . . . .	Kate Voigt
Assistant to the Prop Designer . . . . .	Amanda Buchalter
Assistant to the Master Electrician . . . . .	Peter James Florian
Assistant to the Sound Designer . . . . .	Romina Ramirez
Backstage Crew . . . . .	Anna Jayne Szabo
Crew Back-up . . . . .	Jessica Klimushyn
Light Board Operator . . . . .	Peter James Florian
Sound Board Operator . . . . .	Romina Ramirez
House Manager . . . . .	Amanda Buchalter
Production Box Office . . . . .	Lindsey Briggs
. . . . .	Kate Voigt
Rehearsal Videographer & Sound Technician . . . . .	Lucas Daniels
Social Media Intern . . . . .	Thomas Macias
Public Relations Intern . . . . .	Devin Faught
Marketing Analyst . . . . .	Michael Lopetrone
Production Photographer . . . . .	Sean Carter
Archival Photographer . . . . .	Danna Segrest
Videographer . . . . .	Robert W. Hubbard
Program Advertising Coordinator . . . . .	Holly Bulko
Production Graphic Design . . . . .	Daryl L. Fazio

\*member of Actors' Equity Association, the Union of Professional Actors and Stage Managers in the United States.

# ACKNOWLEDGMENTS\*

2188 Studio  
 Cynthia Avery  
 Chelsea Area Garden Club  
 Chelsea District Library  
 Chelsea House Victorian Inn

North Lake United Methodist Church  
 George Till  
 Gestamp  
 Waterloo Upholstery  
 Wesley's Catering

\*Please see program insert for additional acknowledgments.

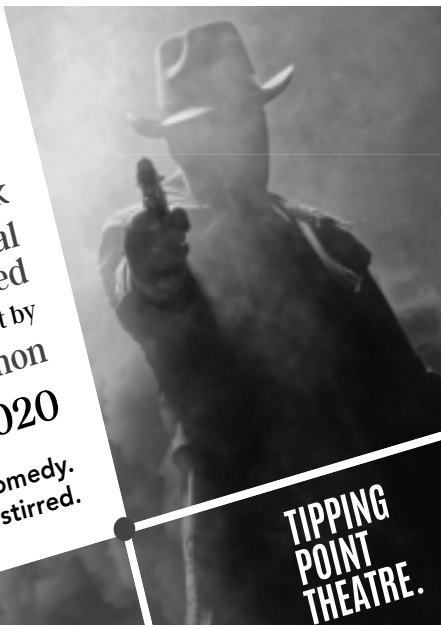
# THE 39 STEPS

adapted by Patrick Barlow  
from the novel by John Buchan  
from the movie by Alfred Hitchcock

Licensed by ITV Global  
Entertainment Limited  
and an original concept by  
Simon Corbal & Nobby Dimon

Jan. 30-Mar. 8, 2020

Murder. Mystery. Comedy.  
Shaken not stirred.



TIPPING  
POINT  
THEATRE.

LIVE PROFESSIONAL THEATRE IN DOWNTOWN NORTHVILLE

Tickets 248.347.0003 | [tippingpointtheatre.com](http://tippingpointtheatre.com)

THE DIO

IT'S

ONLY

MURDER

JANUARY 31<sup>ST</sup> - MARCH 1<sup>ST</sup>

[WWW.DIOTHEATRE.COM](http://WWW.DIOTHEATRE.COM) (517) 672-6009



# ADMINISTRATIVE STAFF & ARTISTS

Founder	Jeff Daniels
Artistic Director	Guy Sanville
Managing Director	Katie Hubbard
Development Director	Aubrey Martinson
Company Manager	Amy Klain
Technical Director & Master Electrician	Gary Ciarkowski
Apprentice Chief & Literary Manager	Michelle Mountain
Director of Educational Programming	Michelle Mountain
Development Associate	Thomas Macias
Office Manager	Abby Rudnicki
Group Sales & Box Office Manager	Julia Garlotte
Campaign Consultant	Margarite Fourcroy
Development Assistant	Patricia Stankey
Box Office Assistants	Cyndi Bertso • Rob Caplis • Jack Meloche Danna Segrest • Megan Wesner
Apprentices	Lindsey Briggs • Amanda Buchalter Peter James Florian • Jessica Klimushyn Romina Ramirez • Anna Jayne Szabo • Kate Voigt
Acting Instructors	Caitlin Cavannaugh • Carey Crim • Jeff Daniels Angie Kane • Lauren Knox • Thomas Macias Michelle Mountain • Rhiannon Ragland • Guy Sanville
Playmakers Playwrights	Carey Crim • Jeff Daniels • Jeff Duncan Cloe Mavis Gifford • Matthew Gwynn • Lauren Knox Brian Letscher • Matt Letscher • David MacGregor Julie Marino • Robert Milne • Megan Pinto • Lanford Wilson
Resident Properties Designer	Danna Segrest
Resident Artists	Bartley H. Bauer • David Bendena • Jon Bennett Dan Bilich • Ryan Black • Will Bryson • Caitlin Cavannaugh Gary Ciarkowski • Mark Colson • Susan Craves • Carey Crim Ben Daniels • Jeff Daniels • David Daoust • K. Edmonds Devin Faught • Casaundra Freeman • Katie Hubbard Reid G. Johnson • Sarab Kamoo • Angie Kane • Amy Klain Lauren Knox • Jeremy Kucharek • Brian Letscher • Matt Letscher Alex Leydenfrost • David MacGregor • Thomas Macias Randolph Mantooth • Janet Maylie • Richard McWilliams Rusty Mewha • Angela Kay Miller • David Montee Michelle Mountain • Vincent Mountain • Shelby Newport Aphrodite Nikolovski • Wayne David Parker Sarah Pearline • Brad Phillips • Jim Porterfield Rhiannon Ragland • Dawn Rivard • Guy Sanville • Vanessa Sawson Danna Segrest • Kristin Shields • Noele Stollmack • Paul Stroili Kate Thomsen • Lynch R. Travis • Meghan VanArsdalen Tom Whalen • Dana L. White • Suzanne Young • Will David Young
Associate Artists	Julia Garlotte • Matthew Gwynn George Till • Adair Whalen
Accounting Services	Sinelli & Associates



# A2CT's 90th SEASON!

Urinetown, The Musical  
September 12-15, 2019

My Three Angels  
October 24-27, 2019

The Fantasticks  
January 9-12, 2020

Jeeves Intervenes  
March 12-15, 2020

Godspell (2012)  
April 23-26, 2020

Matilda, The Musical  
June 4-7, 2020

Tickets and Information at  
[www.a2ct.org](http://www.a2ct.org) | 734.971.2228

# TIBBITS

*ABBAMANIA & Night Fever*  
A Tribute to ABBA & The BeeGees  
Jan. 25, 2020 at 7pm

*Coldwater Comedy Fest*  
Three Professional Comedians  
Mar. 14, 2020 at 7pm

*2020 Academy Award  
Nominated Shorts*  
Live Action & Animated  
Feb. 9, 2020 at 2pm

Downtown  
Coldwater, MI



**Tibbits.org • 517.278.6029**

## **A Wilde Theatre**

*Where anything can happen!*

March 6 - March 22, 2019  
Friday and Saturday at 8:00 p.m.  
Sunday at 2:00 p.m.

## **The Wild Women of Winedale**

By Jessie Jones, Nicholas Hope, and Jamie Wooten.

Authors of Dixie Swim Club and  
Always a Bridesmaid

Directed by Lynn Wilde

Reserved Tickets on Sale Now!  
[www.AWildeTheatre.com](http://www.AWildeTheatre.com)

Like us on Facebook!

Performances at the  
Brighton Coffeehouse  
and Theater



361 W. Main Street  
Brighton 48116

Live Professional  
Theatre

## A MESSAGE FROM THE BOARD OF DIRECTORS

From the beginning, The Purple Rose Theatre Company has aspired to be the beacon of American theatre. Founded in 1991 by Jeff Daniels, our mission has been to develop opportunities for theatre professionals while entertaining, enriching and building a loyal following. Audience commitment to the company has resulted in a fiscally solvent and highly respected arts and community partnership.

The PRTC envisions an even brighter future with increased national visibility and enriched economic and artistic health. Well-established and critically acclaimed, The Purple Rose Theatre Company will continue to be the home of world-class, original American theatre.



The Director is a member of the  
**STAGE DIRECTORS AND CHOREOGRAPHERS  
SOCIETY**, a national theatrical labor union.

The Purple Rose Theatre Company is a member of the Ann Arbor/Ypsilanti Regional Chamber, Arts Alliance, Greater Brighton Area Chamber of Commerce, Chelsea Area Chamber of Commerce, Culture Source, Dexter Area Chamber of Commerce, Greater Jackson Chamber of Commerce, and Saline Area Chamber of Commerce.

Actors' Equity Association (AEA) was founded in 1913 as the first of the American actor unions. Equity's mission is to advance, promote and foster the art of live theatre as an essential component of our society. Today, Equity represents more than 40,000 actors, singers, dancers and stage managers working in hundreds of theatres across the United States. Equity members are dedicated to working in the theatre as a profession, upholding the highest artistic standards. Equity negotiates wages and working conditions and provides a wide range of benefits including health and pension plans for its members. Through its agreement with Equity, this theatre has committed to the fair treatment of the actors and stage managers employed in this production.

AEA is a member of the AFL-CIO and is affiliated with FIA, an international organization of performing arts unions. For more information, visit [www.actorsequity.org](http://www.actorsequity.org).

# ADVERTISE IN OUR PLAYBILL



Please contact Holly Bulko to reserve ad space in our 2019-2020 playbills at [hollyrbulko@gmail.com](mailto:hollyrbulko@gmail.com).

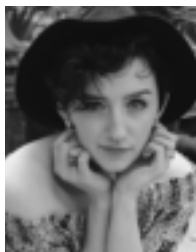
**Ad deadline for our Spring production, "Paint Night" by Carey Crim, is March 5, 2020.**

size	2 show rate	single show
inside covers (4.5" x 7.5")	\$3000 <i>(\$1500 per ad)</i>	\$1525
full (4.5" x 7.5")	\$1350 <i>(\$675 per ad)</i>	\$700
half (4.5" x 3.625")	\$800 <i>(\$400 per ad)</i>	\$425
quarter (2.125" x 3.625")	\$475 <i>(\$237.50 per ad)</i>	\$250

# APPRENTICE PROGRAM

Patterned after the program Jeff Daniels experienced at the Circle Repertory Company, our apprentice program gives young artists an opportunity to work and learn in a professional theatre setting.

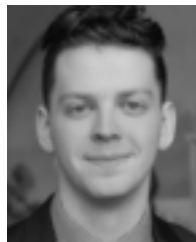
## 2019/2020 APPRENTICE CLASS



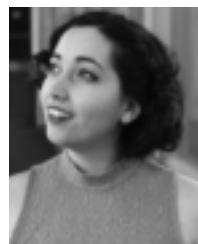
LINDSEY  
BRIGGS  
Grand Blanc, MI  
BFA in Theatre  
Performance  
University of  
Michigan-Flint



AMANDA  
BUCHALTER  
Canton, MI  
BS in  
Communication,  
BS in Theatre Arts  
Eastern Michigan  
University



PETER JAMES  
FLORIAN  
Kalamazoo, MI  
BFA in Acting  
Michigan State  
University



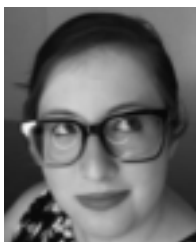
JESSICA  
KLIMUSHYN  
Royal Oak, MI  
BFA in Acting,  
Minor in General  
Business  
Western Michigan  
University



ROMINA RAMIREZ  
Sterling Heights, MI  
BA in Theatre  
Wayne State  
University



ANNA JAYNE  
SZABO  
Romeo, MI  
AA in Theatre  
Lansing  
Community  
College



KATE VOIGT  
Bloomfield  
Township, MI  
BA in Theatre,  
Minor in Creative  
Writing  
Denison University

Information and applications available at [purplerosetheatre.org](http://purplerosetheatre.org).



When her father dies, Lissie returns to her family's apple orchard after escaping from there with her brother Roger many years before. But a chance encounter with an old flame conjures haunting family secrets she thought she'd left behind. As Lissie tumbles down a rabbit hole of memory and grief, she must choose whether to preserve her tangled past—or burn it to the ground.

Directed by David Welber (*Admission, The Now and the Then*), featuring Alysa Kolasac (*Right Half Life*), Matthew Swift, and Jeremy Kucharek (*Admission*).

Performances are Thursdays, Fridays, and Saturdays at 8:00pm and Sundays at 2:00pm.

# APPLE SEASON

BY E. M. LEWIS  
JAN. 31 - FEB. 23, 2020



Theatre NOVA, 410 W Huron St., Ann Arbor, MI 48103

Tickets: \$22 (Pay-what-you-can tickets available)

theatreNOVA.org • 734-635-8450 • A2theatreNOVA@gmail.com



Tecumseh Center for Arts  
Shirley Todd Herrick Theater

## 2019 - 2020 TOURING SEASON

Visit our website to see our full lineup of events!



### JOHN LATINI | Nov. 2 | 7:30 pm | \$23-25

Award-winning musician and two-time Detroit Blues Champ, John Latini personifies the best that Michigan's rock history has to offer: an honest, no-nonsense commitment to real songs about real people.

### LEGENDS OF MI COMEDY | Jan. 25 | 7:30 pm | \$25-30

TCA is hosting legendary comedians Dave Landau (Last Comic Standing), Bryan McCree (MADtv), Bill Bushart (Detroit Comedian of the Year), Norm Stulz (Comedy Central) & Steve Smargon (Bi-polar Marine)!



### NY, NY DUELING PIANOS | Feb. 15 | 7:30 pm | \$25-40

Drew and Kin are back! This comedy-based dueling piano show is always a fun, high-energy party-in-a-box! Pianists sing and play everything from Jimmy Buffet, Billy Joel, and Tom Petty, to Lady Gaga, Elvis, and Katy Perry.

### LE CIRQUE ESPRIT | March 7 | 4:00 pm | \$25-30

Featuring New York City's renowned ABCirque and live orchestrations by the contemporary group CORDIS, Le Cirque Esprit presents its latest creation, "Spirit of the Machine." Based on the Greek mythological tale of Talos.



### PHASE 5 | April 25 | 7:30 pm | \$23-25

Phase 5 brings their authentic recreation of Motown's greatest hits to the TCA stage. One of the most electrifying acts to come out of Detroit, Phase 5's smooth jazz mixed with Hip Hop and R&B will leave you wanting more.

400 N. Maumee St. Tecumseh, MI | 517.423.6617 | www.TheTCA.org





# SPOTLIGHT ON DEVELOPMENT

## The Purple Rose Gang

The Purple Rose Gang is our multi-year giving club at the PRTC. This special “Gang” is comprised of donors who have made a minimum three-year pledge, at the \$10,000 a year level to the theatre.

The “Gang” will be recognized with a special plaque on the wall of the theatre lobby, a commemorative pin, and acknowledgements in our play production programs and website. Ongoing initiatives will continue to be put in place to properly recognize the individuals committed to this special giving program at The Purple Rose.

### **Members of The Purple Rose Gang to date are:**

David A. Brandon Foundation  
Peter Brown & Maria Leonhauser  
Craig & Donna Common  
Philip J. Curtis  
The Feeney Family  
The Hamp Family  
Annmarie & Neil Hawkins  
Richard & Leslie Helppie  
William B. Holmes Family  
Tom & Debby McMullen  
Peter & Carol Walters  
Ron & Eileen Weiser  
Jeff & Dawn Williams

*Members of the “Gang” as of December 19, 2019*

For more information on how you can become a member of The Purple Rose Gang, please contact Development Director, Aubrey Martinson, at 734.433.7782 ext. 29.

*The PRTC is a 501(c)(3) federally tax-exempt, Michigan non-profit organization. Your donations are tax deductible to the maximum allowed by law.*



# INVENTION & REIMAGINATION

2019-2020

## DR. FOX AND THE IMPOSSIBLE CURE FOR DEATH

Book & Music by Benedict Braxton-Smith  
Book & Lyrics by Megan Peterson  
SEPTEMBER 21 - 22, 2019

**FRANKENSTEIN**  
Adapted by Quinn Mattfeld  
OCTOBER 11 - 20, 2019

**TWELFTH NIGHT**  
By William Shakespeare  
NOVEMBER 8 - 17, 2019

**FRESHMAN SHOWCASE**  
The Power of Spontaneous Invention  
NOVEMBER 21 - 24, 2019

**INTO THE WOODS**  
Music & Lyrics by Stephen Sondheim  
Book by James Lapine  
FEBRUARY 14 - 23, 2020

**BONNETS: HOW LADIES OF GOOD BREEDING ARE INDUCED TO MURDER**  
By Jen Silverman  
MARCH 13 - 22, 2020

**MARIAN, OR THE TRUE TALE OF ROBIN HOOD**  
By Adam Szymkovicz  
APRIL 10 - 19, 2020

**MSU DEPARTMENT OF THEATRE**  
THEATRE.MSU.EDU  
WHARTONCENTER.COM OR 1-800-WHARTON

## OUR 2019-2020 SEASON

40 years of building imaginations...

**Strega Nona and the Magic Pasta Pot**  
October 24 - 26\*

**A Christmas Carol**  
December 5 - 8

**Frog and Toad**  
January 23 - 25\*

**Under the African Sky**  
February 20 - 22

**Coding to the Moon: Margaret Hamilton & the Apollo Missions**  
(WORLD PREMIERE)  
March 4 - 7

**The Tale of the Mischievous Bunny**  
March 25 - 28\*

**Treasure Island**  
April 29 - May 3

\*Special activities at the theater this day



All performances take place at  
Towsley Auditorium - Morris Lawrence  
Building, Washtenaw Community College

wildswantheater.org  
(734) 995-0530

## 2019-2020 SEASON 14



**The Safe House**  
by Kristine Thatcher  
Oct. 3 - Nov. 3, 2019  
A Michigan Premiere

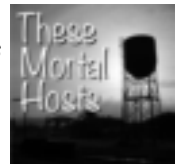


**A Christmas Carol: The Radio Show**  
by David Alberts  
Nov. 21 - Dec. 22, 2019



**900 Miles to International Falls**  
by Annie Martin  
Jan. 30 - Mar. 1, 2020  
A World Premiere

**These Mortal Hosts**  
by Eric Coble  
Mar. 26 - April 26, 2020  
A Michigan Premiere



**Alabaster**  
by Audrey Cefaly  
May 21 - June 21, 2020  
A National New Play Network  
Rolling World Premiere



**Be Here Now**  
by Deborah Zoe Lauffer  
July 9 - Aug. 9, 2020  
A Michigan Premiere



**WILLIAMSTON THEATRE**  
122 S. Putnam Street, Williamston MI 48895  
517-655-SHOW (7469) ~ www.williamstontheatre.org





# THE **PURPLE ROSE** THEATRE COMPANY

## SEASON UNDERWRITERS & PRODUCTION SPONSORS



Sponsoring a Purple Rose production is making a personal investment in American theatre and in a community we all share.

Sponsor benefits are offered at varying levels of support and appeal to a wide range of interests. Depending on your sponsorship level, exclusive benefits may include priority seating, complimentary and discounted tickets, recognition in publications, invitations to new play readings, rehearsals, and opening night parties, VIP event tickets, complimentary signed scripts, private backstage tours and more.

We want you to have the very best sponsorship experience possible; we will work closely with you to customize benefits which respond to your specific interests and that best meet your needs.

For more complete season underwriting, production sponsorship, and donor benefit information, please contact Development Director, Aubrey Martinson, at 734.433.7782 ext. 29 or via email at [Aubrey@purplerosetheatre.org](mailto:Aubrey@purplerosetheatre.org).

*The Purple Rose Theatre Company is a 501(c)(3) federally tax-exempt, Michigan non-profit organization. Your donations are tax deductible to the maximum allowed by law.*

### **2019-2020 Season Underwriters:**

Ford Motor Company Fund  
The Hamp Family  
The Matilda R. Wilson Fund  
Richard & Jane Manoogian Foundation  
The Shubert Foundation

### **2019-2020 Production Sponsors:**

Chelsea Comfort Inn & Village Conference Center  
Chelsea Rhone, LLC  
Chelsea State Bank  
Philip J. Curtis  
Domino's  
Neil & Annmarie Hawkins  
Michigan Council for Arts & Cultural Affairs  
National Endowment for the Arts

# THE PURPLE ROSE THEATRE COMPANY

## INDIVIDUAL GIVING



### YOUR GIFTS AT WORK!

**We are deeply grateful for gifts at all levels. Your tax-deductible donation to The Purple Rose can pay for . . .**

- \$50-75 . . . . . a playwright fee for one Greenhouse or workshop
- \$125 . . . . . special effects for a single show
- \$250 . . . . . an Understudy's salary for 10 days
- \$500 . . . . . an Actor's salary for one week
- \$1,000 . . . . . professional design expenses for a production
- \$1,500+. . . . . PRTC event sponsorship
- \$5,000+ . . . . . sponsoring a PRTC production
- \$10,000+ . . . . . Purple Rose Gang sustainers

Annual donations of \$250 or greater allow for advance ticket service for one year, with the ability to purchase tickets two weeks before the general public. For a complete listing of donor benefits, please visit [www.purplerosetheatre.org/giving](http://www.purplerosetheatre.org/giving).

For more complete season underwriting, production sponsorship, capital projects, deferred giving, and benefit information, please contact:

Development Director, Aubrey Martinson, at  
**734.433.7782 ext. 29** or [Aubrey@purplerosetheatre.org](mailto:Aubrey@purplerosetheatre.org).

To make a donation to The Purple Rose Theatre Company online, visit [www.purplerosetheatre.org](http://www.purplerosetheatre.org). Gifts can also be made by including PRTC in your will, by mail or over the phone:

The Purple Rose Theatre Company  
137 Park Street  
Chelsea, MI 48118  
734.433.7782

*The PRTC is a 501(c)(3) federally tax-exempt, Michigan non-profit organization. Your donations are tax deductible to the maximum allowed by law.*

# THANK YOU!

We thank you for your generous campaign support. Your gift is at the heart of everything The Purple Rose accomplishes through its Grow the Rose campaign.

We make every effort to appropriately recognize our wonderful donors at the PRTC. If your information is inaccurate or not listed below, and you believe this is in error, please contact the Development Department at 734.433.7782, and we will make this correction to our records as soon as possible. As always, we appreciate our positive relationships with our donors. Thank you!

*(Annual Gifts/Pledges reflected below were received between November 19, 2018 - December 19, 2019.)*

## MAJOR BENEFACTOR CIRCLE

*(Gifts of \$25,000 and above)*

Anonymous Foundation	Maria Leonhauser & Peter Brown*
Anonymous Foundation	Richard & Jane
Anonymous Foundation	Manoogian Foundation
Community Foundation for Southeast Michigan	Tom and Debby McMullen*
Philip J. Curtis*	Matilda R. Wilson Fund
Peter & Patti Feeney*/ Chelsea Rhone, LLC	Michigan Council for Arts & Cultural Affairs
Ford Motor Company Fund	The Shubert Foundation Inc.
Sheila & Steve Hamp*	Peter & Carol Walters*

## PREMIERE CIRCLE

*(Gifts of \$10,000 to \$24,999)*

Ieva Berglands*	David A. Brandon Foundation
Jim & Debbie Beuche*	DTE Energy Foundation
Chelsea State Bank	Alfie & DeAnn Faulkner
Mike & Melonie Colaianne Fund <i>-In Memory of My Brother, Todd Lancaster</i>	Neil & Annmarie Hawkins*
Craig & Donna Common/ Common Grill*	Helppie Family Charitable Foundation
	Outliers LLC
	Promanas Group

## PRODUCER CIRCLE

*(Gifts of \$5,000 to \$9,999)*

Jack & Susan Carlson	Jeff Hall & Chad Losey
Chelsea Comfort Inn & Village Conference Center	Peter & Danialle Karmanos
Chemical Bank	Ying Li & Oliver Varban*
Chuck & Jan Dominick Domino's	John & Cindy Merrifield
Charles & Julia Eisendrath*	Real Corporation
Michael & Ann Feeney* <i>-In memory of Nancee Sanville</i>	Shinola
	Thrivent Financial*
	Ron & Eileen Weiser

*\*Also, World Premiere Fund benefactor*

*(continued)*

## PATRON CIRCLE

(Gifts of \$2,500 to \$4,999)

Charley & Kathy Budd	Aubrey Martinson
Robert Caldwell	McLaren Wealth Strategies
Jeff & Kathleen Daniels	Melanie & George Moses
John Daniels	Deanna Olsen
Detroit Lions Foundation	Antoinette Pilzner & Daniel Moons*
Encompass Financial	R. H. Bluestein & Company
Partners, LLC	Baiba Rahn*
James Evering	Russell Video
Lloyd & Judi Ganton*	Kenneth & Barbara Shay
Carl Hansen &	Leslie Shipley
Sylvia Vance Hansen	Ugly Dog Distillery
Mabel Harris Trust	UnitedHealth Care
John Hochrein	Diane & Marcus Vale
Maria Kelly & Peter Largen	Vintage Barn Boutique
Raeann Kusch	Dr. Douglas Weaver &
David & Celia Larsen*	Judy St. Romain
John & Anne Mann*	Willis & Jurasek, P.C.

## ARTISTIC DIRECTOR CIRCLE

(Gifts of \$1,000 to \$2,499)

American 1 Credit Union	Nick Genova & Susan Agar-Genova
American Title Company of Jackson	Richard & Leslie Helpie*
Essel & Menakka Bailey	Robert & Joyce Hetzler
Emily Bandera M.D.	Katie & Robert Hubbard
Lee & Floy Barthel	Greg Janz & Cindy Jovanelly
Micki Berg	Willard H. Johnson
Belinda Bicknell & Gary Witus	Jeff Klink
Craig & Bev Brass	Kohler
Paul & Karol Buchholz	Larry & Debra Kraus
Dave & Mary Ann Busfield	Jeff & Brenda Lane
Irene & William Bushaw	LangeTwins Family Winery
Kathy Carter & Mack Ruffin	& Vineyards
Ms. Casto & Mr. Horner	Liebler Family Foundation*
John & Anne Colone - <i>In memory of</i>	David Ligotti & Karen Quenneville*
<i>Nancee Sanville</i>	Bob & Terri Lutz*
Constance & James Cook	Martin Family Foundation*
Charles & Susan Craves*	Melissa & Dan McCance
Mort & Renee Crim	PPG Neurosurgery*
Roseann Dailey	Bob & Debbie Merion
Jeff & Barbara Duncan	Merkel Furniture & Carpet One
EDSS	Lee & Marge Meserve
Jim Eng & Pat Randle	Joe & Melanie Parin
Mr. & Mrs. Donald & Marjory Epstein	Dominic & Julie Pinciotti - <i>In memory</i>
Foresight Group	<i>of Nancee Sanville</i>
Mark A. Frank Family	Plum Market
Robyn Frey & Lawrence King	Rick Powell & Rita Ayyanger, M.D.

\*Also, World Premiere Fund benefactor

(continued)

## ARTISTIC DIRECTOR CIRCLE

James Rine	The Apple Matching Gifts Program
Ami & Prue Rosenthal	Michael & Cynthia Thomas
Richard & Ellen Sandor Family	Catherine Upton & David Wesner
Foundation	Doug & Susan VanArsdalen
Dr. Lynn Schachinger &	Jeffrey & Amy Voigt
Dr. Sheryl Ulin*	Walter J. Weber, Jr.
Jackie Schiller	Family Foundation
Brian & Denise Schuh	Mr. Warren & Mrs. Orlowska-Warren
Joe Schwarz M.D.*	Kevin & Betsy Watson
Ellie Serras <i>In honor of Dave Ligotti</i>	Eric & Sherry Wexler
Peter & Nettie Severn	Jeff & Dawn Williams*
Brooks & Nancy Sitterley	Theresa Wong
George & Nancy Sloan	Bill & Pam Wood*
Daniel & Patricia Stankey*	Douglas Wood & Kay Holsinger
The Sterken Family Foundation	Brian & Amy Woodruff
Dennis & Jan Sullivan	J.D. & Joyce Woods
Rick Taylor	

## PLAYWRIGHT CIRCLE

(Gifts of \$250 to \$999)

Anonymous	Todd & Penny Blackburn
William & Arvalene Ackley	The Boeing Company
Linda Albertzart	Ronald & Mimi Bogdasarian
John & Stephanie Alexander	Marcoux, Allen, Bower,
Darryl & Sharon Allen	& Kendall, P.C.
George & Jean Alpervitz	Kenneth Boyer
Diane Andrasik	Mr. & Mrs. William Bozgan
Ann Arbor Implant	Annette Bragalone
& Periodontal Center	Patricia Brainard & Scott Tatro
Steve & Ann Arbaugh	Jim & Robbie Brandstatter
Rosemary Austgen	Greg Brautigan
Cynthia Avery	Deron Brod
Bagitude! Karla Staley	Barbara Bronitsky
Robert & Mary Baird	Wendy & Scott Broshar
Andrew Ballnik	David Brown
David Barnes & Deborah Ladenheim	Jason Brown
Dr. Beverly Baroni	Pamela Brown
Brian & Heidi Bartes	Tim & Cynthia Brunett
Clare & John Baxter	Ronald Burkman
Eugene & Lori Beach	Dennis & April Byrne
Marlene Beck	Donna Carpenter
William Belanger	Graham & Suzanne Carpenter
Hillary Bennett	Trudy Carpenter & Jim Richardson
Patricia Benson	Michael & Laura Carry
James A. Bergman Trust	Margaret Caveney
Don & Linda Bernardi	Scott Chaiken
Amanda Black	Chamberlain Family Foundation
	Charity Fundraising

\*Also, World Premiere Fund benefactor

## PLAYWRIGHT CIRCLE

<p>Chelsea Cornerstone LLC  Chelsea House Victorian Inn  Blair &amp; Clare Clark  Brian &amp; Cheryl Clarkson  Larry Clayton  Cleary's Pub  Larry &amp; Jennifer Coates  Cole Family Foundation  Coleman's Corn Maze  Michael Coletta  Daniel &amp; Muriel Converse  James M. Cook  Nancy Cooper  Kevin &amp; Patricia Corr  Creative Arts Studio  Becky Crump &amp; Paul Gottschalk  Paul &amp; Barbara Cumming  Reiley Curran  David &amp; Denise Currin  Steven Cyncewicz  Vicki Daane  Carey Crim &amp; George Defotis  Jon &amp; Amy Devine  Fred &amp; Sally Dickinson  Patrick &amp; Robin Dickson  William &amp; Robin Dickson  Don Black  James &amp; Cathie Dries  Kenneth Duck &amp; Mary Gallagher  David &amp; Joanne Duff  Sandy Duncan  Rita &amp; Mort Dunlop  Tom &amp; Lynn Dunn  Bonnie Dzendzel  Todd Dziobak  Vincent &amp; Michelle Elie  Sue &amp; Bob Elkins  Helen Etkin  Executive Education, Inc.  Damian &amp; Katherine Farrell  James Finzel  Mike Foresman  Randall &amp; Christine Forsch  Robert &amp; Diane Fox  Perry &amp; Elenor Francis  Judith Freedman  Alice Freshour  Bill &amp; Boc Fulton  G L &amp; A, LLC</p>	<p>Otto &amp; Lourdes Gago  Ronnie Gainer  Steven &amp; Martina Garland  Kim &amp; Diane Gasior  Robert &amp; Henrietta Georgevich  Jim &amp; Candy Gildea  David &amp; Maureen Ginsburg  Patrick Gipson  John &amp; Patricia Glidewell  Frank &amp; Emily Gobright  Catherine Goebel  Judith &amp; Richard Golden  Mark &amp; Brenda Goodman  Joanne &amp; Ted Gray  Larry &amp; Martha Gray  Robert H. Gray &amp; Susan M. Smith  Michael &amp; Libby Greanya  Two Storyline Project LLC*  Deborah Greenspan  Ron &amp; Sharon Griffith  William Groves  Dave Gunstrom &amp; Katherine Forsythe  Vasu Gupte  John &amp; Mary Ann Guthrie  Eric Haag &amp; Julie Nurnberger-Haag  Brian &amp; Kirsten Hallstrom  Fiona Hankenson  Jeff &amp; Debra Hardcastle  Woody &amp; Susan Harrington  Jim Heaton &amp; Lou Ellyn Green  Ross Hemphill  Jeff &amp; Heather Hephner  Ron Hicks &amp; Leslie Shipley  Glenn &amp; Lisa Higgins  Molly Hilton  James &amp; Sharon Hobson  Daphne Hodder  Jeffrey &amp; Maxine Hoffman  Joel &amp; Kathy Hoffman  Mike &amp; Nancy Hollerbach  Kathy Hopps  Alice, Rowell &amp; Penny Huesmann  Patricia A. Huntington  Ellen Ives &amp; Colleen Johnson <i>-In  memory of Patricia Hobar and in  honor of all the Purple Rose Theatre  Company Apprentices past, present,  and future!</i>  Rhonda Jacobs  Jay &amp; Valentina Jindal</p>
---	---

\*Also, World Premiere Fund benefactor

*(continued)*

## PLAYWRIGHT CIRCLE

<p>Jennifer John  Michael Jule  Michael &amp; Linda Kaneris  Wendy &amp; Kent Kanipe  Carol &amp; Peter Kappus  Thomas &amp; Linda Kelleher  Jim Keller &amp; Mary Ellen Hoy  Sally &amp; David Kennedy  James &amp; Patricia Kessler  Paul &amp; Leah Kileny  David Kiley  Brian Klaus  Jewelry Set In Stone  David &amp; Judy Konst  Julie Koss  Barb &amp; Gene Krolak  Karen Kruise  Richard &amp; Melanie Kursinsky  Brian Kusch  Helen Lancaster  David Langendorfer  John Langmore  Brandon Layne  Aaron &amp; Heather Letscher  Amy &amp; Jason Lindauer -<i>In memory of</i>  <i>Nancee Sanville</i>  Herbert &amp; Karla Linkner  John Liskey  Suzette Lixie  Janet Lockwood  Elizabeth Long  Dennis Lopatin  Tony &amp; Betty Lorenzi  Dean &amp; Gwen Louis  John Loveless  Neil Lucas  Debbi &amp; Gary Maki  Bill &amp; Sue Maloney  Michael &amp; Pamela Marcovitz  Mark Leventer M.D. &amp; Kathleen  Anzicek D.O. <i>In memory of</i>  <i>Nancee Sanville</i>  David Marold &amp; Sheila York  Brenda &amp; Chuck Marshall  Ann Martin &amp; Russ Larson  Frank Martin  David &amp; Marjorie Mastie  Dakin Matthews  Terri &amp; Richard McCalla  Griff &amp; Pat McDonald</p>	<p>Craig McKee  Paul &amp; Jan McOsker  Donald &amp; Marilyn Meier  Hank &amp; Liesel Meijer  Steve &amp; Rhonda Melchi  Rashmi Menon  Jack &amp; Mary Ann Merkel  Pat &amp; Sandy Merkel  Jim &amp; Betsy Michaud  Robert &amp; Shelagh Miller  Daniel Minzy  The Richard &amp; Nancy Monk  Charitable Fund  William &amp; Jeanne Nance  Janet &amp; Mark Nisbett  Richard Northway  John &amp; Lexa O'Brien  Larry &amp; Melanie Odom-Groh  Edmund &amp; Jane Outslay  Nancy Owens  Donna Parke  John &amp; Mary Parker  Janet Peacock  Eric Peterson &amp; Kristin Langellier  Barbara Petoskey &amp; James Salay  Rob &amp; Deb Piatkowski  Max &amp; Sherri Plank  Milene Plisko  Lee &amp; Sandra Porterfield  Mike &amp; Jane Potee  Print-Tech  Paul &amp; Barb Purdue  Ann &amp; Lou Raden  Rauser Family  Tim &amp; Paula Reuille  Brian Reynolds  Timothy Richards  &amp; Constance McGuire  Phillip &amp; Nora Rieves  Mark &amp; Kathy Roeser  Mike &amp; Anne Roman  Drs. Mark &amp; Karen Harlow  Rosentraub  George Aler &amp; Elyce Rotella  Rudolf E. Wilhelm Fund  Robert Ruskin M.D.  Deborah Rutherford  Joan Sampieri  Perry Samson &amp; Deborah Gibson  Jim &amp; Mary Savage</p>
---	---

\*Also, World Premiere Fund benefactor

(continued)

## PLAYWRIGHT CIRCLE

Julia Schachinger	Touchstone
Randy & Marita Schiffman	Travis Pointe Country Club
Paul Schissler & Anne Nauts	Phil Tuchinsky
Frederick & Diane Schmid	Roger & Dolly Tworek
Michael Schroer	Bob & Susie Ufer
Annabel Schrot	ULitho
Aileen Mengel Schulze <i>-In memory of Nancee Sanville</i>	Barbara Underwood & David Patria
Secret Crisis Comics	Karen Valvo
John & Cynthia Secrist	John & Susan Wacksmuth
Stuart & Angela Sedlacek	Wendy Wahl & William Lee
Danna & Wade Segrest	Phil Walton
Tony & Elizabeth Sensoli	Waterloo Upholstery
Candice Shavalia & David Strauss	Neal & Susan Weinberg
Richard Sherburne	Sandra Weintraub
Thomas & Mary K Shields	Robert Wendt & Judith Pheatt
Jean & Thomas Shope	Deborah Werner
David & Nancy Siegel	Wesley's Catering
Ed & Kathy Silver	Rita Wetzel
Peter & Sharon Silveri	Kate Whitaker
Jennifer Sinclair*	George S. White & Lynda Allen
Matt Burke & Vicki Sisteck	Jason Wickman & Amy Mitchell
Jennifer Sinclair*	Shirley Williams
Matt Burke & Vicki Sisteck	Tim & Linda Willibey
Tim Smalley & Sara Dansky	Karen Wilson-Smithbauer
Jeff Spindler	Jack & Friedelle Winans
Katherine Spindler	Mike & Diane Worthing
Stella Stephens <i>-In memory of James R Stephens</i>	James & Dianna Wright
Bill & Andrea Stickney	Steve & Dayle Wright
Jeff Stoller	Steven Yarows
Saundra Stortz	The Standard Bistro
Tennille Taraszkiwicz	James & Nancy Zajdel-Wright
George & Mary Tewksbury	Jerome & Susan Zake
The Acting Company	Stan & Kathy Zasuwa
Emily & David Seitz	Stephen & Jane Zawistowski
David & Caren Thompson	Paul A. & Imogene Zimmermann
David Timm & Mary Przygocki	Zou Zou's Cafe
	Howard & Faye Zuckerman

## CAST CIRCLE

(Gifts of \$100 to \$249)

Terry & Cindy Ahern	Marilynn Arnold
Amazon Smile	Gary A. Bailey
Christine Anderson	Rodney Barron
Ann Arbor Distilling Company	Bart & Alisa Bauer
Applied Storytelling	Alan Baum

\*Also, World Premiere Fund benefactor



## CAST CIRCLE

<p>Stephen C. Bayne            &amp; Sharon K. Grayden            Henry &amp; Molly Bazydlo            Steve Berglund            Peter Bertocci            Leeds &amp; Margaret Bird            Judi &amp; Ed Davidson            Bivouac, Inc.            Ryan Black            Thomas &amp; Mary Steffek Blaske            Bob Bluhm            &amp; Sherle Abramson-Bluhm            John &amp; Lindsay Bogdasarian            John &amp; Leora Bowden            Mary Jane Bower            Paul Boylan            Joel Bregman &amp; Elaine Pomeranz            Evelyn Burton            Christina Cattell            Michael Champ            Cherry Republic            Eunice &amp; Mark Chylla            Martha Clapsaddle            Michael &amp; Janice Cook            Jan &amp; Scott Cooper <i>-In memory of            Nancee Sanville</i>            Steve Cotner &amp; Debby Peters            James &amp; June Coyne            Karen Crawford &amp; Bill Welch            Larry &amp; Jennifer Cray            Richard &amp; Barbara Czarnota            Roberta Dailey            Marjorie Daniels            Thomas &amp; Nancy Davies            Dianne Davis            Thomas &amp; Jean Davis            Jeannine Dawson            Michael &amp; Christen Dearing            David &amp; Kay Deering <i>-In memory of            Nancee Sanville</i>            Matthew DeLand            Ron &amp; Dee Dershem            Detroit Metal Works            Ken Dickinson            Gene &amp; Barbara Dickirson            John &amp; Linda Dietrich <i>-In memory of            Nancee Sanville</i>            William &amp; Jean Dietrich <i>-In memory            of Nancee Sanville</i></p>	<p>Karen Dillon            Molly Dobson            Robert &amp; Brenda Doral <i>-In memory of            Nancee Sanville</i>            Skip &amp; Michelle Dorrington            Linda Dowsett            Dr. Daniel Pipoly &amp; Cynthia Pipoly            Anonymous <i>-In memory of Nancee            Sanville</i>            Thomas Drinkwater            Deborah Eastman            Daniel Eckhout            Peggy &amp; Ted Elliott            Donald Enderby            Diana Evans            Don &amp; Gwen Evich            Michael Falatine            Devin Faught            Liz &amp; Sam Febba            L. Alan &amp; Nancy Finlayson            Jane Fitzgerald            Janet &amp; Scott Fogler            Jeff Frank            Barbara Fulton            Judith Gardzinski            Julia Garlotte            Erika George            Ariel Gold            Maryann &amp; Marv Guenther            Thomas Guise            Victoria Haehl            Ken &amp; Hillary Handwerger            Keith &amp; Georgette Hansen            Michael Hayes            Bill &amp; Lisa Hayhow            George Collins &amp; Paula Hencken            Bob &amp; Barbara Hensinger            DeAnn Hervey            Web L. &amp; Betty M. Hill            Cali Hobgood Photography            Vicky Hurst            Erich &amp; Ann Marie Jensen            Steve &amp; Callie Jerant            Reid Johnson            John &amp; Linda K. Jonides            Michael Kadar            Ken &amp; Eileen Kapka            James &amp; Joanna Kastely            Kennard Family Charitable Fund</p>
--	---

*\*Also, World Premiere Fund benefactor*

*(continued)*

## CAST CIRCLE

Dennis & Ruth Kenny	John & Sally Preston
Larry & Katherine King	David & Marcia Quilter
Anthony & Phoebe Klain	Dick & Linda Radtke
Arnold & Jean Kluge	Laura Raisch
Marci Klumb	Hope Raymond
Allegra Kranz	Jeff & Katie Reece
Adrian Kreger	Joe Reecher
Lawrence Kron	Ed & Mary Reid-Selth
Dr. DiAnn L'Roy	Alice Rhodes
David & Mary Laidlaw	Patrick & Mary Roche
Peter & Susan Lee	Home Box Office
Matt & Jennifer Letscher - <i>In memory</i>	Mark Rosenfeld
<i>of Nancee Sanville</i>	James C. & Laura Rozycki
Franette Liebow & Jeffrey Goldman	Ruth's Chris Steakhouse
- <i>In memory of Nancee Sanville</i>	Sandhill Farm Foundation
David London	Marla Sanford
Gary MacDonald	Jane Sauchak
Gerald & Pamela Maloney	Marni Schmid
Norman Marchetti	Thomas Schmitz
Larry & Rowena Matthews	Mary Schulze
Donald May	Dale & Nancy Schumann
Janet Maylie - <i>In memory of</i>	Dennis Seppanen
<i>Nancee Sanville</i>	Bruce & Lisa Shapiro
Alice McCreary	Patti & Bob Shaw
Mary & George McGuire	Matthew Sheehy
Margot & Tom Mehringer	Cliff & Ingrid Sheldon
Linda & Chris Meloche	Patrick & Susan Shields
Kathleen & Phillip Micheli	Clark & Amy Shuler
Microsoft	Joan & Ron Smith
Carol & Bill Middel	Jan & Mark Sockness
Vonetta Mills	Robert Spaly
Alexandra & Matt Moore	Stardust Inc.
Mary Mostaghim	Donna & Johan Stohl
Michael Mroczyk & Martha Amis	William & Mary Stuart
Roger & Beth Mulder	Tim & Patti Sweeny
Ruth Ann Musbach	The Crofoot
Alexander & Carole Nakeff	Madeline & Steve Thiry M.D. <i>In</i>
David & Jeanne Neuhoff	<i>memory of Nancee Sanville</i>
Rebecca Nickels	Jane & Nigel Thompson
Robert & Karen Niedzielski	Janette & Martin Tobin
Cherie Nixon	Howard & Denise Treado
Tracy Page	Timothy Treado
John & Frances Parker	Bob & Kathy Trudell
Lisa Patrell	Allen D Tucker Jr
Don & Pat Paulsell	Tulip Tree Gardens
Bill & Susan Penner	USArtQuest
Lawrence & Nancy Peters	Ann Utter
Pfizer Foundation Matching	David & Marion VanLoo
Gifts Program	Joan Voigt
	Judy Ward

\*Also, World Premiere Fund benefactor

(continued)

## CAST CIRCLE

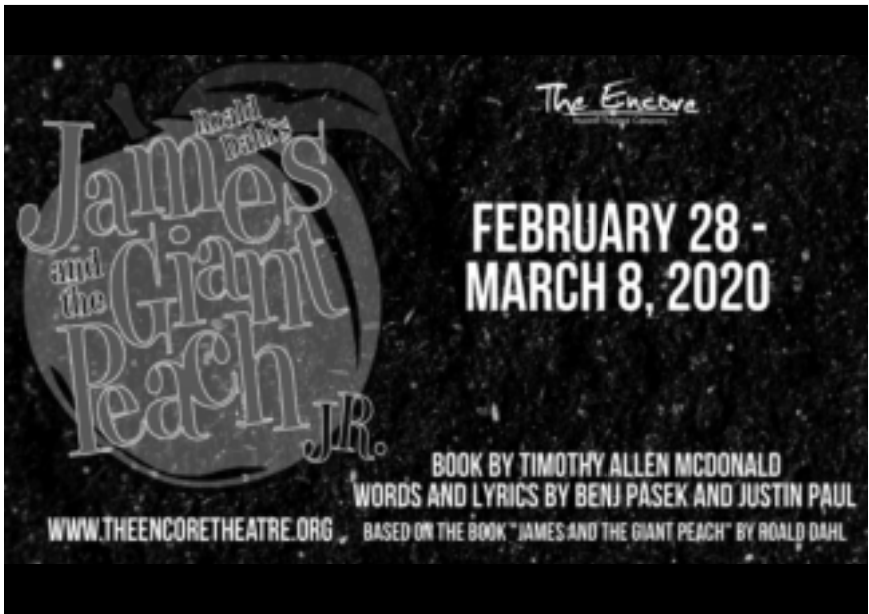
Ruth A. Watson	Denise Wirtz
Arthur & Sandra Welch	David & Jean Wolski
Tracey Wentz & Chuck Blackmer	Ann & David Wood
Lisa Whalen - <i>In memory of</i>	Sally Wright Smith
<i>Nancee Sanville</i>	Roberta Young
John Whitaker	Henry Zelisse
Avis L. White	Fred & Miriam Sass Zuidveld
Lynn & John White	Lois Zurvalec
Sandy & Sarah Wiener	Susan H. & David S. Zurvalec
Stuart & Nancy Winston	

## CAPITAL SUPPORT

Anonymous	Carl Hansen
Anonymous Foundation	Shirley J. Herrick*
F. Ross & Laura Jean Birkhill Family	Kohler Company
Foundation	Michigan Council for Arts
Ford Motor Company Fund	& Cultural Affairs
The Hamp Family*	Matilda R. Wilson Fund

## ENDOWMENT SUPPORT

Anonymous*	The Hamp Family*
Gary Ciarkowski	Donald Warren &
Thomas D. Davies	Lenore Orłowska-Warren
Charles & Julia Eisendrath*	



# The Purple Rose Theatre Company Productions

## 1991

*Blush at Nothing\**  
by Lisa A. Wing  
February 7-March 24, 1991

*Shoe Man\**  
by Jeff Daniels  
April 25-July 21, 1991

## 1991 / 1992

*Kuru*  
by Josh C. Manheimer  
September 5-October 27, 1991

*Ties That Bind\**  
by Kitty Dubin  
Nov 14, 1991-January 5, 1992

*More Fun Than Bowling*  
by Steven Dietz  
January 23-April 12, 1992

*The Tropical Pickle\**  
by Jeff Daniels  
May 7-August 30, 1992

## 1992 / 1993

*Possessed: The Dracula Musical*  
Book by Robert Marasco  
& Jason Darrow  
Music by Carter Cathcart  
October 1-December 20, 1992

*Necessities*  
by Velina Hasu Houston  
January 14-March 7, 1993

*National Anthems*  
by Dennis McIntyre  
April 1-June 5, 1993

*Nooner\**  
by Kim Carney  
June 17-August 29, 1993

## 1993 / 1994

*The Vast Difference\**  
by Jeff Daniels  
October 7, 1993-January 9, 1994

*Two Sisters\**  
by T. E. Williams  
January 27-March 20, 1994

*Keely and Du*  
by Jane Martin  
March 31-May 22, 1994

*Stanton's Garage*  
by Joan Ackermann  
June 9-August 28, 1994

## 1994 / 1995

*Thy Kingdom's Coming\**  
by Jeff Daniels  
October 6-December 23, 1994

*Only Me and You\**  
by Kim Carney  
January 19-March 12, 1995

*Hang the Moon\**  
by Suzanne Burr  
March 31-May 21, 1995

*Weekend Comedy*  
by Jeanne and Sam Bobrick  
June 8-August 20, 1995

## 1995 / 1996

*Escanaba in da Moonlight\**  
by Jeff Daniels  
September 28-December 23, 1995

*Beast on the Moon*  
by Richard Kalinoski  
January 18-March 10, 1996

*The Purple Rose  
Spring Comedy Festival\**  
by various playwrights  
March 28-May 19, 1996

*The Harmony Codes\**  
by Michael Grady  
June 6-August 25, 1996

## 1996 / 1997

*Apartment 3A\**  
by Jeff Daniels  
September 26-December 21, 1996

*Labor Day\**  
by Kim Carney  
January 16-March 8, 1997

*The Hot L Baltimore*  
by Lanford Wilson  
March 27-May 31, 1997

*Off the Map*  
by Joan Ackermann  
June 19-August 23, 1997

## 1997 / 1998

*Escanaba in da Moonlight*  
by Jeff Daniels  
September 18-December 20, 1997

*Julie Johnson*  
by Wendy Hammond  
January 22-March 14, 1998

\*World Premiere

# The Purple Rose Theatre Company Productions

*Book of Days\**

by Lanford Wilson  
April 2-June 27, 1998

*Marcus is Walking\**

by Joan Ackermann  
July 16-September 12, 1998

## 1998 / 1999

*Boom Town\**

by Jeff Daniels  
October 8-December 19, 1998

*The Hole\**

by Wendy Hammond  
January 28-March 20, 1999

*The Big Slam*

by Bill Corbett  
April 8-June 12, 1999

*Criminal Genius*

by George F. Walker  
July 1-August 22, 1999

## 1999 / 2000

The PRTC moved into temporary offices in September 1999 while the building underwent a 16-month renovation project.

## 2000 / 2001

*Rain Dance\**

by Lanford Wilson  
January 11-March 17, 2001

*Orphan Train: An American Melodrama\**

by Dennis North  
April 12-June 16, 2001

*Completing Dahlia\**

by Annie Martin  
July 12-September 1, 2001

## 2001 / 2002

*Guys on Ice*

by James Kaplan & Fred Alley  
October 4-December 22, 2001

*Months on End\**

by Craig Pospisil  
January 17-March 16, 2002

*Born Yesterday*

by Garson Kanin  
April 4-June 15, 2002

*Let It Be\**

by Dennis North  
July 11-August 31, 2002

## 2002 / 2003

*Across the Way\**

by Jeff Daniels  
September 26-December 21, 2002

*Stand\**

by Toni Press-Coffman  
January 23-March 15, 2003

*Hope for Corky\**

by Randall Godwin  
April 3-May 31, 2003

*Blithe Spirit*

by Noel Coward  
June 19-August 30, 2003

## 2003 / 2004

*The Good Doctor*

by Neil Simon  
October 2-December 20, 2003

*Leaving Iowa\**

by Tim Clue & Spike Manton  
January 22-March 13, 2004

*The Underpants*

by Carl Sternheim  
Adaptation by Steve Martin  
April 1-June 5, 2004

*Duck Hunter Shoots Angel\**

by Mitch Albom  
June 24-September 18, 2004



*Guys on Ice*

\*World Premiere

# The Purple Rose Theatre Company Productions

## 2004 / 2005

*The Mystery of Irma Vep*  
by Charles Ludlam  
October 7-December 18, 2004

*Norma & Wanda\**  
by Jeff Daniels  
January 20-March 19, 2005

*Bus Stop*  
by William Inge  
April 7-June 4, 2005

*And the Winner Is\**  
by Mitch Albom  
June 23-September 24, 2005

## 2005 / 2006

*The Glass Menagerie*  
by Tennessee Williams  
October 20-December 17, 2005

*Guest Artist\**  
by Jeff Daniels  
January 19-March 18, 2006

*The Late Great Henry Boyle\**  
by David MacGregor  
April 6-June 3, 2006

*Honus and Me*  
by Steven Dietz  
based on the novel by Dan Gutman  
June 22-September 2, 2006

## 2006 / 2007

*Escanaba In Love\**  
by Jeff Daniels  
Sept 28, 2006-January 20, 2007

*The Subject Was Roses*  
by Frank D. Gilroy  
February 8-March 17, 2007



*Escanaba In Love*

*When the Lights Come On\**  
by Brian Letscher  
April 5-June 2, 2007

*Sea of Fools\**  
by Matt Letscher  
June 21-September 1, 2007

## 2007 / 2008

*The Poetry of Pizza\**  
by Deborah Brevoort  
October 4-December 22, 2007

*Vino Veritas\**  
by David MacGregor  
January 17-March 8, 2008

*Growing Pretty\**  
by Carey Crim  
March 27-April 23, 2008

*Panhandle Slim & The Oklahoma Kid\**  
by Jeff Daniels  
June 19-September 27, 2008

## 2008 / 2009

*Apartment 3A*  
by Jeff Daniels  
October 16-December 20, 2008

*A Streetcar Named Desire*  
by Tennessee Williams  
January 22-March 21, 2009

*Bleeding Red\**  
by Michael Brian Ogden  
April 9-May 30, 2009

*Wake\**  
by Carey Crim  
June 18-August 22, 2009

## 2009 / 2010

*Escanaba\**  
by Jeff Daniels  
Sept 17, 2009 - January 23, 2010

*Gravity\**  
by David MacGregor  
February 11-March 27, 2010

*Our Town*  
by Thornton Wilder  
April 15-May 29, 2010

*Boeing-Boeing*  
by Marc Camoletti  
adapted by Beverley Cross  
June 17-September 11, 2010

\*World Premiere

# The Purple Rose Theatre Company Productions

## 2010 / 2011

*Best of Friends\**  
by Jeff Daniels  
October 14-December 18, 2010

*Corktown\**  
by Michael Brian Ogden  
January 20-March 5, 2011

*Some Couples May...\**  
by Carey Crim  
March 24-May 28, 2011

*Consider the Oyster\**  
by David MacGregor  
June 16-September 3, 2011

## 2011 / 2012

*Escanaba in da Moonlight*  
by Jeff Daniels  
September 22 - December 31, 2011

*A Stone Carver*  
by William Mastrosimone  
January 19 - March 10, 2012

*White Buffalo\**  
by Don Zolidis  
March 29 - June 2, 2012

*On Golden Pond*  
by Ernest Thompson  
June 21 - September 1, 2012

## 2012 / 2013

*Superior Donuts*  
by Tracy Letts  
September 20 - December 15, 2012

*The Meaning of Almost Everything\**  
by Jeff Daniels  
January 10 - March 9, 2013

*33 Variations*  
by Moisés Kaufman  
March 28 - June 1, 2013

*Miles & Ellie\**  
by Don Zolidis  
June 20 - August 31, 2013

## 2013 / 2014

*The Vast Difference*  
by Jeff Daniels  
September 19 - December 18, 2013

*Redwood Curtain*  
by Lanford Wilson  
January 16 - March 15, 2014

*The PRTC Spring Comedy Festival:  
Lovers, Liars & Lunatics\**  
by various playwrights  
April 3 - May 24, 2014

*The Last Romance*  
by Joe DiPietro  
June 12 - August 30, 2014

## 2014 / 2015

*Annapurna*  
by Sharr White  
September 18 - December 13, 2014

*Steel Magnolias*  
by Robert Harling  
January 15 - March 14, 2015

*Talley's Folly*  
by Lanford Wilson  
April 2 - May 23, 2015

*2AZ\**  
by Michael Brian Ogden  
June 11 - July 26, 2015



*Steel Magnolias*

\*World Premiere

# The Purple Rose Theatre Company Productions

## 2015 / 2016 (25th Anniversary)

*Casting Session\**  
by Jeff Daniels  
September 17 - December 19, 2015

*The Odd Couple*  
by Neil Simon  
January 21 - March 26, 2016

*Gaps in the Fossil Record\**  
by Matt Letscher  
April 14 - May 28, 2016

*Morning's At Seven*  
by Paul Osborn  
June 16 - August 27, 2016

## 2018 / 2019

*Diva Royale\**  
by Jeff Daniels  
September 20 - December 29, 2018

*Never Not Once\**  
by Carey Crim  
January 17 - March 16, 2019

*All My Sons*  
by Arthur Miller  
April 4 - June 1, 2019

*Welcome to Paradise\**  
by Julie Marino  
June 20 - August 31, 2019

## 2016 / 2017

*Morning After Grace\**  
by Carey Crim  
September 29 - December 17, 2016

*Smart Love\**  
by Brian Letscher  
January 19 - March 4, 2017

*Vino Veritas*  
by David MacGregor  
March 23 - May 27, 2017

*Harvey*  
by Mary Chase  
June 15 - August 26, 2017

## 2019 / 2020

*Sherlock Holmes and the Adventure of the Fallen Soufflé\**  
by David MacGregor  
September 19 - December 21, 2019

*Roadsigns\**  
by Jeff Daniels  
January 16 - March 14, 2020

*Paint Night\**  
by Carey Crim  
April 2 - May 30, 2020

*A Walk Around the Table\**  
by Lauren Knox  
June 18 - August 29, 2020

## 2017 / 2018

*God of Carnage*  
by Yasmina Reza  
translated by Christopher Hampton  
September 28 - December 16, 2017

*FLINT\**  
by Jeff Daniels  
January 18 - March 10, 2018

*Sherlock Holmes and the Adventure of the Elusive Ear\**  
by David MacGregor  
March 29 - May 26, 2018

*Willow Run\**  
by Jeff Duncan  
June 14 - September 1, 2018



*Willow Run*

\*World Premiere



A TRADITION OF  
Sustainable Winegrowing



## LANGETWINS

FAMILY WINERY AND VINEYARDS

For five generations we have been growing winegrapes in the Lodi appellation. In 2006 we opened a winery with our families to showcase our passion for growing sustainable winegrapes—because great wine starts in the vineyard. Cheers! —Randal and Brad Lange, The Twins

Please look for our estate grown wines in your neighborhood: Sauvignon Blanc, Chardonnay, Moscato, Cabernet, Zinfandel

*Lodi, California*  
LANGETWINS.COM

# PATRON INFORMATION

## Contact

Address: 137 Park Street  
Chelsea, MI 48118  
Box Office: 734.433.7673  
tickets@purplerosetheatre.org  
Administration: 734.433.7782  
info@purplerosetheatre.org  
Fax: 734.475.0802

## Box Office Hours

Monday through Friday:  
10:00 AM - 6:00 PM

Performance days:

Wednesday 10:00 AM - 6:00 PM  
Thurs & Fri 10:00 AM - 10:00 PM  
Saturday Noon - 10:00 PM  
Sunday Noon - 4:00 PM

## Performance Times

Wednesday at 3:00 PM  
Thursday & Friday at 8:00 PM  
Saturday at 3:00 PM & 8:00 PM  
Sunday at 2:00 PM

Visit [PurpleRoseTheatre.org](http://PurpleRoseTheatre.org) for complete schedules and added performance dates.

## Tickets

Tickets may be purchased by phone or online at [www.PurpleRoseTheatre.org](http://www.PurpleRoseTheatre.org) with Visa, MasterCard or American Express.

Full payment is due at time of reservation. Patrons may exchange or cancel tickets up to 24 hours prior to performance without penalty. Web sales fees are nonrefundable.

Group reservations for 12 or more are available at a discount of \$4 per ticket. Tickets must be pre-paid three weeks prior to performance.

## Gift Cards

Gift Cards are available in any amount! See the Box Office for more details.

## No Smoking Policy

Smoking is not permitted inside the building.

## Cameras and Recording Devices

The making of photographs and/or recordings is strictly prohibited inside the theatre.

## Electronic Devices

During performances, please turn off or silence cellular phones, watch alarms and other electronic devices.

## Accessibility

The PRTC complies with all current ADA Standards. Assisted listening devices and large print programs are available upon request at our Box Office for all performances.

## Refreshments

Please do not bring anything to eat or drink into the theatre.

## Babes-in-arms

Out of consideration for our patrons and performers, babes-in-arms are not allowed in our theatre during performances.

## Complimentary Cough Tablets

These are available at the Box Office. To avoid performance distractions, please unwrap them prior to the performance, at intermission or during the break between scenes.

## Please Remain Seated

Actors may be using the aisles for entrances and exits during the show.

## Late Seating

Once the performance has begun, seating is at the discretion of the House Manager.

UP NEXT...



## PAINT NIGHT

a World Premiere by Carey Crim  
directed by Guy Sanville

April 2 - May 30, 2020

Five long-time best friends, in great need of a girls' night out, gather for a bachelorette paint-and-sip night at their local art studio. As the wine and paint flow freely, secrets and long-held tensions come to the surface. Attempting to make contact with their inner artists, they confront buried truths about themselves and their relationships, proving that life, like art, rarely turns out exactly as planned.

*\*Contains adult language & content.*

**Tickets on sale to donors of \$250+ on Feb. 10 and general sales begin Feb. 24.**

# driving a brighter future

Ford Motor Company Fund



Thanks to you, our community is a stronger, better place.

Ford salutes the Purple Rose Theatre.

[www.community.ford.com](http://www.community.ford.com)