



ROADSIGNS

A WORLD PREMIERE BY JEFF DANIELS
DIRECTED BY GUY SANVILLE

MUSIC BY JEFF DANIELS & BEN DANIELS



ROBERTS PAINT & BODY

"We meet the nicest people by accident."

Full service body shop specializing in collision repair, auto frame work, and glass repair for all makes and models. Fully licensed and insured facility in Chelsea, Michigan.

610 East Industrial
Chelsea, MI 48118
(734) 475-1149
www.robertspb.com



ROBERTS PAINT & BODY Now Offers Auto Detailing

Call (734) 475-1149 or
email detail@robertspb.com
for details, gift certificates, or
to schedule your next detailing.

610 East Industrial
Chelsea, MI 48118
www.robertspb.com

“Lanford Wilson is one of the few artists in our theatre who can truly make America sing.” -Frank Rich

It is not a stretch to say that were it not for Lanford Wilson’s belief in a tall mega talented young actor from Michigan named Jeff Daniels over 40 years ago, you probably would not be sitting in this special place, about to see a new American play.

The play you are about to see was inspired by a poem written by Lanford and turned into a song by Jeff.

It is one of many beautiful and historical collaborations by these two giants of the American theatre.

Their work has much in common, especially an unwavering compassion for those tortured souls whom most would call “losers”. And a shared sense of place. The places in their work are characters in their plays just as critical to their stories as anyone who speaks words. The people in them rise like spirits from the places in their stories. And, they are both masters at finding the humanity in everyone and everyplace they put on stage.

We bring the teachings and spirit of both of these incredible artists to work with us every day.

Thank you for making this place possible through your support of our endeavors.

A handwritten signature in cursive script, reading "Guy Sanville".

Guy Sanville
Artistic Director

**A Special Thank You to our
2019-2020 Season Underwriters:**

Ford Motor Company Fund

The Hamp Family

The Matilda R. Wilson Fund

Richard & Jane Manoogian Foundation

The Shubert Foundation

2019-2020 Production Sponsors:

Chelsea Comfort Inn &
Village Conference Center

Chelsea Rhone, LLC

Chelsea State Bank

Philip J. Curtis

Domino's

Neil & Annmarie Hawkins

This production is supported in part by an award from the
MICHIGAN COUNCIL FOR ARTS AND CULTURAL
AFFAIRS and the NATIONAL ENDOWMENT FOR THE ARTS.





JEFF DANIELS
Founder

GUY SANVILLE
Artistic Director

KATIE HUBBARD
Managing Director

with media partners
Michigan Radio
ChelseaMich.com
HOME.fm

presents

ROADSIGNS

by Jeff Daniels

music by Jeff Daniels & Ben Daniels

Set Design by
SARAH PEARLINE

Costume Design by
SHELBY NEWPORT

Lighting Design by
NOELE STOLLMACK

Sound Design by
ANGIE KANE

Properties Design by
DANNA SEGREST

Choreographed by
RHIANNON RAGLAND

Music Direction &
Arrangements by
ANGIE KANE

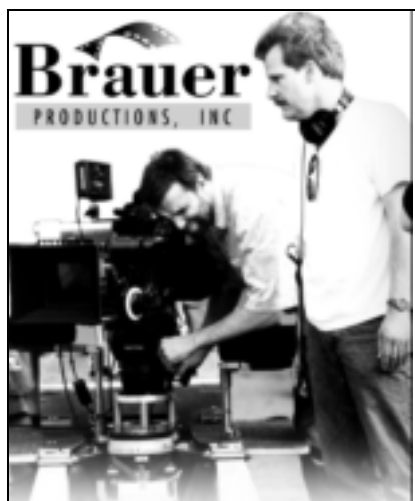
Stage Managed by
DEVIN FAUGHT*

Directed by
GUY SANVILLE⁺

Based on the song "Roadsigns"
by
Lanford Wilson and Jeff Daniels

*member of Actors' Equity Association,
the Union of Professional Actors and Stage Managers in the United States.


+member of the Stage Directors and Choreographers Society,
a national theatrical labor union.



Brauer
PRODUCTIONS, INC.

"You're right Jeff, they do look like ants"

530 S. Union Street
Traverse City, MI 49684
(231) 941-0850
www.brauer.com



CAFE & COFFEE BAR
COFFEE • EDIBLES • ART

FEATURING: CRAFT BEERS & FINE WINES

101 N. MAIN ST.
DOWNTOWN CHELSEA MAIN & MIDDLE ST.

734-433-4226



FLINT REPERTORY THEATRE A Program of the Flint Institute of Music

ONE FLEW OVER THE CUCKOO'S NEST

By DALE WASSERMAN
Adapted from the book by KEN KESEY

MARCH 13-22
810.237.7333
FlintRep.org/cuckoos-nest

Production sponsored by
CHARLES STEWART HARDING FOUNDATION

2019-2020 Flint Rep Signature Series is sponsored by **WHITING FOUNDATION**

 This program and/or service is funded in whole or in part by the Genesee County Arts Education and Cultural Enrichment Millage funds. Your tax dollars are at work.

CAST OF CHARACTERS

Lanny	David Bendena*
Walter	Tom Whalen*
Robert.	Richard McWilliams*
Harmon.	Rusty Mewha*
Esther	Ruth Crawford*
Tanesha	K Edmonds*
Francine	Kristin Shields*
Darlene	Caitlin Cavannaugh*

*member of Actors' Equity Association, the Union of Professional Actors and Stage Managers in the United States.

PLACE & TIME:

The play's two main settings are a small coffeehouse folk club in January, 2020, and aboard a bus going north through central Illinois in July, 1978. Flashbacks to other times and places occur within these two locations.

PLEASE NOTE

There will be no intermission during the performance.

The making of photographs and/or recordings inside the theatre is strictly prohibited.

Please keep the aisles clear for actors' entrances and exits.

**WHEN YOUR IMAGE
IS ON STAGE...**

**turn to Foresight Group for
a perfect performance**



**FORESIGHT
GROUP**

Print Solutions That Deliver

734.971.1700

5204 JACKSON ROAD, SUITE 1
ANN ARBOR, MI 48103

www.foresightgroup.net

**Polly's
Country
Market**

lower prices throughout
the store ... thats

***Total Bottom Line
Savings!***

7001 Dexter-Ann Arbor Rd.

734-424-9600

1101 M-52, Chelsea

734-4758283

CHELSEA LUMBER CO.

ENJOYS SUPPORTING
THE POSITIVE GROWTH OF CHELSEA
AND
The Purple Rose Theatre Company

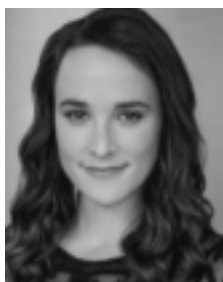


ONE OF THE STATES LARGEST AND MOST MODERN
HOME SUPPLY CENTERS
JUST NORTH OF I-94 ON THE WEST SIDE OF MAIN ST. IN CHELSEA

CAST OF CHARACTERS



DAVID BENDENA (*Lanny*) *Roadsigns* is David's 12th production with The Purple Rose, where he is very proud to be a Resident Artist. Big thanks to Jeff, Guy, Angie, 2188 Studios, and everyone on this ride. He'd also like to thank anyone who ever taught him anything about music. Especially his brother.



CAITLIN CAVANNAUGH (*Darlene*) is honored and psyched to be at The Purple Rose again after the Sherlock Holmes Adventures, *All My Sons*, *Never Not Once*, *Willow Run*, and *Harvey*. Some other favorite credits include *Twelfth Night* (Viola) and *Carousel* (Carrie) with Texas Shakespeare Festival and *Marat/Sade* (Jacques Roux) at the Sabanci International Theatre Festival in Adana, Turkey. She is a proud graduate of Northern Illinois University (BFA Acting) and Moscow Art Theatre School (Certificate in Acting) and is represented by Shirley Hamilton in Chicago. All the love and gratitude for her #1 supporter, her mom, her grandparents, and to Guy, Michelle, Rhi, Angie, Katie, Amy, Devin, Thomas, Ben, Luke, the apprentices, and every single person in The Purple Rose family for believing in and supporting her, and to Jeff for bringing her many Megabus trips to life. More at www.caitlincavannaugh.webs.com.

**FORD
FRIDAYS**

The generous underwriting of the **Ford Motor Company Fund** is providing support for two special performances of *Roadsigns* with half-priced tickets and post-show talk-backs.

February 7 @ 8pm
March 6 @ 8pm

Merkel
FURNITURE AND CARPET ONE

f t p i
merkelfurniture.com



**Celebrating 94 Years
in Downtown Chelsea!**

Culture Creations



M - closed
T - 10-5
W - 12-5
Th, F, S - 10-8
Sun - 11-5

We travel the world so you can too.

**Unique gifts and items
from around the world.**

105 S. Main St. Chelsea, MI
734-274-2225

Stop By Before & After The Show



FOOD • SPIRITS

Daily Luncheon & Dinner Specials

Directly Across The Parking Lot From The Theatre
6 HD TVs

Live Entertainment Friday & Saturday Evenings

**Hours: Mon-Sat 11:00 a.m.-midnight
Sunday 12 p.m.-9 p.m.**

AMERICAN EXPRESS



113 S. Main • Chelsea • 734-4751922
www.Clearyspubchelsea.com

DISCOVER



CAST OF CHARACTERS



RUTH CRAWFORD (*Esther*) has previously appeared at The Purple Rose in *Welcome to Paradise*, *Harvey*, *Morning's At Seven* and *Poetry of Pizza*. She's also worked extensively at other Detroit area Equity theatres. She was in *The Gin Game* at Williamston Theatre; *Ripcord* at the Tipping Point; *Rites of Passage* at the JET; *Good People* at the Performance Network and *Arsenic and Old Lace* at Meadow Brook Theatre. As a member of the Colony Theatre in LA, her work included roles in *The Cocktail Hour*, *Ring Round the Moon*, and *Morning's At Seven*. Ruth has also been featured in a number of movies and TV shows filmed in the Detroit area including a recurring role in *Detroiters*, *Low Winter Sun*, *Flipped*, *Trust* and *Guest Artist* with Jeff Daniels.



K EDMONDS (*Tanisha*) is proud to return to The Purple Rose stage! She was last seen here in the smash hit *Willow Run*. Some of K's many credits include *Devil's Music* (Bessie Smith) and *The Revolutionists* (Marianne); both at Theatre Nova, *Good People* (Kate) at Open Book Theatre, *Rosie the Riveter* (Bernice) at Wild Swan Theatre, *Ain't Misbehavin'* (Armelia) at Performance Network Theatre and *Ruined* (Josephine) with Plowshares Theatre. On stage isn't the only place K shines; she is an accomplished musician, writer, as well as an award-winning director (Boxfest Detroit 2011), which enabled her to begin her multimedia company, K Edmonds Media. A graduate of Second City Detroit and the International Academy of Design and Technology, with a certificate in hilarity and a B.F.A in Digital Media Production respectively. K feels blessed to have the support of her Mom, Beverly, and to get such great inspiration from her daughter Kemi, and all the talented people she has had the pleasure to work with throughout her career.

BEST WISHES TO THE
PURPLE ROSE



CHELSEA PHARMACY
FREE DELIVERY
HALLMARK CARDS & GIFTS



Mon-Fri 9 a.m.-7 p.m.
Sat 9 a.m.-5 p.m.

1125 S. MAIN ST. CHELSEA
734-475-1188

BIGGBY
COFFEE

UPLIFTING
THE PURPLE ROSE
THEATRE

Show this ad



& receive

FREE BOGO

specialty beverage
(hot, iced or frozen)

1171 S Main St • Chelsea

Good at this location only. Not good
with any other offer. Expires: 12/31/20
CODE 205954

for franchise info www.biggbyc.com



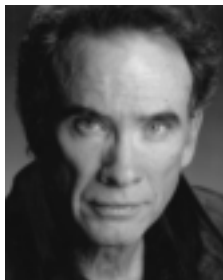
**JUST AROUND THE CORNER FROM
THE THEATER DISTRICT.**



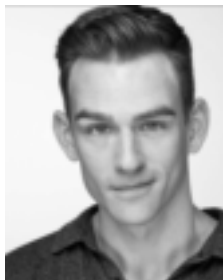
MON CLOSED TUE-THU 11-10 FRI-SAT 11-11 SUN 11-9 SUN Brunch 11-3
112 S Main Street • Downtown Chelsea • commongrill.com • 734.475.0470



CAST OF CHARACTERS



RICHARD McWILLIAMS (*Robert*) was last seen on the Purple Rose stage in *All My Sons*. He is a Purple Rose Resident Artist where he has also appeared in *Harvey*, *Morning's At Seven*, *33 Variations*, *The Vast Difference*, and *Annapurna*. Other theatre credits include *The Price* (Syracuse Stage and Geva Theatre Center), *Long Day's Journey into Night* (Greenbrier Valley Theatre), *Broadway Bound* (Drury Lane Theatre), *A Moon for the Misbegotten*, *Richard III* (Kansas City Repertory Theatre) and *Desire Under the Elms* (The Guthrie Theater). Broadway: *Orpheus Descending*. Off-Broadway: *The Night Hank Williams Died* and *Macbeth*. FILM: *Guest Artist* (written by Jeff Daniels). Many thanks to Guy, Michelle, Jeff and the entire PRTC family. Love to Lindsay and Terri.



RUSTY MEWHA (*Harmon*) is honored to be a Resident Artist at the Purple Rose. PRTC credits: *All My Sons*, *Never Not Once*, *Diva Royale*, *Sherlock Holmes and the Adventure of the Elusive Ear*, *God of Carnage*, *Harvey*, *Morning's at Seven*, *2AZ*, *PRTC Spring Comedy Festival: Lovers, Liars, and Lunatics*, *The Vast Difference*, *Miles and Ellie*, and *Honus and Me*. Huge thanks to Guy, Jeff, Amy, Katie, the amazing apprentices, stage management team, our Board, and you, the audience. All for love and beauty. Thanks to Robyn, Sola, Asher, Chaya, and Ellie, for the endless love and support.

Varsity Lincoln

We Make You

#1

— FIND OUT WHY! —

Certified
Pre-Owned
Lincolns
Save You
Thousands!!



The All-New
2020 LINCOLN AVIATOR

248-305-5300 • Novi/Wixom
VarsityLincoln.com

Delivering One Unforgettable Performance After Another!
Varsity Supports Chelsea & The Purple Rose.

Varsity Ford

800-875-FORD
Ann Arbor

VarsityFord.com



2020 Ford F-150

Open Saturdays!



Get the Best!
Move Up to Varsity!
Over 2,000 vehicles in stock!

CAST OF CHARACTERS



KRISTIN SHIELDS (*Francine*) is a proud Resident Artist at The Purple Rose. She originated the role of Mary Catherine in *Diva Royale*, was an understudy in *All My Sons* and *Flint*, and is excited to be a part of more upcoming productions this season. Most recently, she appeared as Catherine in *The Heiress* with The Lakeside Theatre Company in Toledo, OH. NYC theatre credits include plays at The Workshop Theatre, Fringe NYC, and Musicals Tonight!; 1st National Tour: Dora the Explorer in Nickelodeon's *GO DIEGO GO LIVE!*; Commercials for L'Oreal, LG, Orbit Gum, Dick's Sporting Goods and more. BFA in Musical Theatre from The University of Michigan. Sincere thanks to Guy, Jeff, Angie, Rhi, Devin and the whole Rose tribe for cultivating this special home for Michigan artists. Love to Scottie, my sweet boys, and our incredibly supportive family.



TOM WHALEN (*Walter*) was last seen on The Purple Rose stage as Escoffier in last fall's production of *Sherlock Holmes and the Adventure of the Fallen Soufflé*. He is a Purple Rose Resident Artist where he has appeared in *All My Sons*, *Sherlock Holmes and the Adventure of the Elusive Ear*, *Harvey*, *Morning After Grace*, *Morning's At Seven*, *The Odd Couple*, *Casting Session*, *2AZ*, *The PRTC Spring Comedy Festival: Lovers, Liars, & Lunatics*, *The Vast Difference*, *Our Town*, *Escanaba*, *Panhandle Slim & The Oklahoma Kid*, *Corktown*, *The Glass Menagerie*, *The Good Doctor*, *Let It Be*, *Guys On Ice* and *Orphan Train: An American Melodrama*. Tom has also designed sound for numerous PRTC productions. He has performed locally at the BoarsHead Theatre, Jewish Ensemble Theatre, Meadow Brook Theatre, Hilberry Repertory, The Gem Theatre, The Attic Theatre and Performance Network. His many appearances include *The Cherry Orchard*, *Twelfth Night*, *Moonlight and Magnolias*, *Summer and Smoke* and *Little Shop of Horrors*.



*In Chelsea, we remember our past,
enjoy the present, and plan for the future.*

proud of
The Purple Rose and its
111th Successful Production!
www.chelseamichamber.org

222 S. MAIN ST., SUITE B
Chelsea • Michigan 48118
734-475-1145

Beer – Wine – Cocktails



**115 S. Main St.
Rear entrance from the
parking lot**

**Join us for lunch, dinner,
or drinks & dessert after the
show!**

107 & 109 S. Main St. Chelsea, MI 48118

While you're out on the town, we hope you'll stop in!



*A unique blend of
fashion, footwear and accessories*

Featuring

*Red Wing Boots
Desigual Fashions
Brighton*

*Stormy Kromer
Woolrich
Smart Wool Socks*

*Parsley & Sage
Aventura & Ecoths
Scully Leathers*

www.vogelsandfosters.com

734-475-1606



Mon.-Wed. 10-6 • Thur.-Sat. 10-8 • Sun. 12-5

PLAYWRIGHT



JEFF DANIELS (*Playwright & Composer*) has premiered nineteen full-length plays at the PRTC: *Shoe Man*, *The Tropical Pickle*, *The Vast Difference*, *Thy Kingdom's Coming*, *Escanaba in da Moonlight*, *Apartment 3A*, *Boom Town*, *Across the Way* (2002 American Theatre Critics Association Best New Play Finalist), *Norma & Wanda*, *Guest Artist* (2006 ATCA Runner-Up), *Escanaba In Love*, *Panhandle Slim & The Oklahoma Kid*, *Escanaba*, *Best of Friends*, *The Meaning of Almost Everything* (2013 ATCA Nominee), *Casting Session*, *Flint*, *Diva Royale*, and *Roadsigns*. He just finished performing the role of Atticus Finch in Aaron Sorkin's Broadway adaptation of Harper Lee's *To Kill A Mockingbird*.

COMPOSER



BEN DANIELS (*Composer*) is a singer/songwriter for the Ben Daniels Band, an audio engineer for 2188 Studio in Chelsea, MI and a comedian at home. As a Resident Artist of The Purple Rose Theater Company, Ben helped with the music for *Roadsigns*. He hopes you enjoy the ride.

SUBSCRIBE
TO eNEWS

Receive Purple Rose news in your inbox: behind-the-scenes information, invitations to events, exclusive ticket discounts and more.

Visit **PurpleRoseTheatre.org**



BY CHOICE HOTELS

Comfort & Convenience

The Chelsea Comfort Inn is a great place to stay after the show! The Village Conference Center is newly renovated with a talented on-site chef. It is the ideal choice for your next meeting or special event, with seating from 10-250.



Purple Rose Packages

(Advanced booking required)

734-433-8000

1645 Commerce Park Drive, Chelsea, MI 48118
www.comfortinnchelsea.com

Reinhart
REALTORS

Supporting the Local Arts Community

734-747-7888

www.ReinhartRealtors.com

*The Real estate leader in
Ann Arbor for over 49 years.* 🏠

You'll do
whatever it takes
to help her
succeed.

Make sure
that includes your
Estate Plan.

Curtis Curtis & Brelinski, P.C.
ATTORNEYS | EST. 1901

Attorneys and Advisors to Businesses and Individuals

Estate Planning is more than a will. It helps individuals and families prepare for their personal, medical, family, and financial affairs in the event of death, serious illness, or disability. Proper planning can help you and your family plan for a number of real-life issues.

Curtis, Curtis & Brelinski is a long-time supporter of Purple Rose Theatre.

curtiscurtislaw.com | 517.787-9481

DIRECTOR



GUY SANVILLE (*Director*) has served as Artistic Director of the Purple Rose since May 1, 1995. *Roadsigns* is the 62nd show Guy has directed for The Purple Rose including 43 world premieres. Credits include world premieres of *Flint*, *Escanaba in da Moonlight*, *Guest Artist*, and *Across the Way* by Jeff Daniels (Second place Harold and Mimi Steinberg/American Theatre Critics Association Award), *Book of Days* (Winner Best New Play Harold and Mimi Steinberg/American Theatre Critics Award) and *Rain Dance* (PRTC and Off Broadway productions) by Lanford Wilson and the world premiere of *Gaps in the Fossil Record* by Matt Letscher and *Willow Run* by Jeff Duncan. Member: Society of Stage Directors and Choreographers, Actors' Equity Association, and SAG-AFTRA. For Rose.



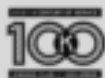
ANGIE KANE (*Musical Director & Sound Designer*) is a proud Resident Artist here at The Purple Rose. She previously served as the Vocal Director, Assistant Director, and Understudy on *Willow Run* and Sound Designer for *Casting Session* and *Steel Magnolias* here at The Rose. Most recently she assistant directed *All My Sons* before setting out to attempt a thru hike of the Pacific Crest Trail last spring—completing approximately 900 miles before returning home. Angie has been given the opportunity to work in many different capacities in this great theatre, including having the honor of directing *Talley's Folly* by Lanford Wilson in 2015. She would like to thank Guy for his support and for continuing to welcome her into his corner of the ring, to Jeff for the opportunity to step into and create this world, to Rhi, Ben, Michelle, Amy, Katie, the amazing apprentices and the entire staff of The Purple Rose—cheers to you, my friends—We are the music makers. We are the dreamers of dreams. For my parents, Kathy and Bob, who have supported me through it all, and continue to nurture my musical soul.

Give ^{Where} You Live





**Volunteer with us
Monday thru Saturday!**

Kiwanis
Thrift Sale



*Official Sponsor of
Warm The Children*

100 N. Staebler Rd.
Fridays & Saturdays | 9am-1pm

734-368-9738 | a2kiwanis.org |  

The Find

*Upscale Family Resale
Downtown Chelsea*

136 W Middle St.
Chelsea, MI 48118
Ph: (734) 593-7044

Tue-Sat 10-4pm
Sunday 12-4pm
or by appointment
for Purple Rose Patrons



Mediterranean, American, Tex-Mex, Pizza, Pasta

Happy Hour from 3:00pm-6:00pm Monday-Friday
Half off Appetizers, \$5 House Wine, \$4 Well Drinks,
\$2 off Featured Drinks & Cocktails, and \$1 off all Beer

Karaoke every Saturday from 10:30pm-1:00am

734-475-7714

1120 S. Main St., Chelsea, MI 48118
Located in the Chelsea Shopping Center,
next to Family Farm and Home

Hours:

M-Th: 11:00am-11:00pm
Friday: 11:00am-12:00am
Saturday: 11:00am-1:00am
Sunday: 12:00pm-10:00pm

DESIGNERS

SHELBY NEWPORT (*Costume Designer*) is an associate professor of theatre at the University of Michigan-Flint, where she is currently serving as the Associate Provost and Dean of Undergraduate Studies. She received her M.F.A. from Purdue University and completed her undergraduate studies at Cornell College. She designs regionally at Tipping Point Theatre, Kickshaw Theatre, Detroit Public Theatre, Flint Repertory Theatre, and is a Resident Artist here at The Purple Rose Theatre Company. Her designs have been seen internationally in London and Margate, England. Shelby is thrilled to be designing costumes for *Roadsigns*, It is her ninth production at PRTC, previously she designed costumes for *Diva Royale*, *Flint*, *God of Carnage*, *Smart Love*, *Morning After Grace*, *Casting Session*, *Superior Donuts*, and *A Stone Carver*. You can see more of Shelby's work at www.shelbynewport.com.

SARAH PEARLINE (*Scenic Designer*) has worked as a set and projection designer with such companies as Circus Flora, St. Louis Symphony, Experimental Theatre Wing, Titan Theatre Company, Prospect Theatre Company, SoHo Think Tank, Nickelodeon Networks, and NY Stage and Film. Sarah is an Associate Professor in the Theatre and Dance department at Wayne State University and a graduate of the Yale School of Drama. Locally, she has had a wonderful time working with Hope Summer Rep Theatre, Detroit Public Theatre, Carrie Morris Arts Production and PuppetArt Theatre, Satori Circus and the DIA. As a Resident Artist here at PRTC, she previously designed *All My Sons*, *Never Not Once*, *Willow Run*, *Harvey*, *Vino Veritas*, *Morning's At Seven* and *Talley's Folly* and is grateful to join the artists here for another fabulous show!

ADVANCE
TICKETS

DID YOU KNOW?

Annual Purple Rose donors of \$250 or more may purchase tickets two weeks before the general public.

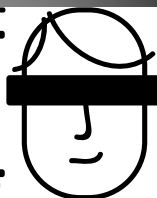
A Place Somewhere Bed and Breakfast

Corinne & Bob Opiteck
196 William Street
Stratford, ON N5A 4Y3
(519)273-2157
somewhere@dsemail.com
www.somewherebb.com

10% Discount for Theatre goers!



~~SECRET~~
~~CRISIS~~
~~COMICS~~



Secret Crisis Comics
1161 S Main Street
Chelsea, MI 48118
734.593.7110

Instagram @TheSecretCrisis
Twitter @TheSecretCrisis

— ballet chelsea presents —

GERSHWIN!



March 2020

CHELSEA & JACKSON



FOR MORE INFORMATION OR TICKETS VISIT: **balletchelsea.org**

DESIGNERS

DANNA SEGREST (*Properties Designer*) has enjoyed the PRTC family since volunteering as backstage dresser for our first production, *Blush at Nothing*. She became an Equity Stage Manager for *Shoe Man* by Jeff Daniels in 1991 and stage managed many shows while training some of the PRTC's first apprentices. Danna now wears many hats as Resident Properties Designer, a Resident Artist, Archival Photographer and Box Office Assistant. Danna is grateful for this opportunity to design the props once again for the production of a Jeff Daniels show. Thanks to Wade and Reeve for taking this ROAD and heeding the SIGNS with Amazing Grace.



NOELE STOLLMACK (*Lighting Designer*) Noele's lighting has appeared onstage at The Brooklyn Academy of Music, Sydney Opera House, Carnegie Hall, The Library of Congress Theatre, as well as the opera companies of Santa Fe, Ontario, Houston, Portland, Vancouver, New Orleans, Nashville, Madison and Milwaukee. Regional design for the theatre includes Wisconsin's Chamber Theatre, Renaissance Theaterworks, Skylight Music Theatre, American Players Theatre, Forward Theatre, First Stage Children's Theatre and Baltimore Center Stage. Some notable examples of Noele's scenic realization and set design include Meredith Monk's international tours of *mercy & impermanence*, *Giulio Cesare in Egitto*, *Albert Herring*, *Dido and Aeneas*, *Venus and Adonis*, *Rio de Sangre*, *Macbeth*, *Tristan und Isolde* and *Magic Flute* for the Florentine Opera, *Rape of Lucretia* at Toledo Opera, *Pagliacci* with Columbus Opera, and *Mirandolina* for the Milwaukee Rep. As Lighting Director for the Houston Grand Opera, Noele supervised lighting for over 50 operas and designed such productions as Andrei Serban's *Elektra*, Dr. Jonathan Miller's *Der Rosenkavalier* and the world premieres of *Harvey Milk*, *Desert of Roses* and *Dracula Diary*.

Jackson's Leading
Source for News,
Information and
Entertainment. JTV is
Jackson TV.



Watch JTV on Comcast, AT&T U-Verse,
WOW, Roku, Amazon Fire TV and
online at www.jtv.tv.



*The perfect ending to a romantic night
on the town or your next getaway!*



Chelsea House Victorian Inn, the
only lodging in downtown Chelsea
blends Victorian Charm with
modern essentials:

Premium Room Amenities, Private Baths,
Hot Breakfast, WIFI, Cable, AC
Innkeeper can arrange: Purple Rose Theatre
Tickets, Dinner at The Common Grill &
activities to complement your stay



www.chelseahouseinn.com

118 East Middle Street, Chelsea, MI 48118
Make reservations online or call 734-475-2244

STAGE MANAGEMENT

DEVIN FAUGHT (*Stage Manager*) is a proud Resident Artist and former apprentice of The Purple Rose Theatre Company. Previous shows on the stage management team include *God of Carnage*, *Flint*, *Sherlock Holmes and the Adventure of the Elusive Ear*, *Willow Run*, *Diva Royale*, *Never Not Once*, *All My Sons*, *Welcome to Paradise*, and *Sherlock Holmes and the Adventure of the Fallen Soufflé*. Thank you to Guy, Michelle, and Angie for their mentorship. Thank you Katie, Amy, Aubrey, and Abby for your tireless efforts. Thank you Megan, Anna, and Jessica. Double thank you to Thomas. And thank you, Jeff, for an artistic home.

ANGIE KANE (*Assistant Stage Manager*) is a proud Resident Artist here at The Purple Rose. *Roadsigns* mark her 18th production as an SM here at The Rose since 2013. She is thrilled to have the opportunity to serve this new work in so many ways. Thanks to this incredible cast, crew, and production team, and love to Devin and Thomas... cheers to everything this year holds.

while you're in town...
experience something

Chelsea

www.chelseamich.com

Use your phone to view our
community calendar & directory
for dining, shopping, attractions,
fun in the outdoors, lodging & more!



**Breakaway where the Food and Service is Great
and the Fun never ends !**

Sports, Food, Drinks and Fun • Everyday Specials •

We offer Elegant banquet rooms for special events!

Open daily AT 10.00 A.M.

501 Coliseum Drive, Chelsea, MI 48118

(behind Chelsea Lumber upstairs at the arctic coliseum)

734-475-9999

Web site: breakaway.arcticcoliseum.net

**Present this program, Purple Rose ticket or ticket stub,
buy one entree get the 2nd entrée of equal or lesser value half off!**



Chelsea Cleaners
& Shirt Laundry

DRY CLEANING • LEATHER • DRAPES
FEATHER PILLOW CLEANING
WEDDING GOWNS • ALTERATIONS

113 Park • Chelsea
Just East of Main **475-9169**

Village Cleaners **428-9630**
10940 S M-52 • Manchester

FOUNDER

JEFF DANIELS has premiered nineteen full-length plays at the PRTC: *Shoe Man*, *The Tropical Pickle*, *The Vast Difference*, *Thy Kingdom's Coming*, *Escanaba in da Moonlight*, *Apartment 3A*, *Boom Town*, *Across the Way* (2002 American Theatre Critics Association Best New Play Finalist), *Norma & Wanda*, *Guest Artist* (2006 ATCA Runner-Up), *Escanaba In Love*, *Panhandle Slim & The Oklahoma Kid*, *Escanaba*, *Best of Friends*, *The Meaning of Almost Everything* (2013 ATCA Nominee), *Casting Session*, *Flint*, *Diva Royale* and *Roadsigns*. He just finished performing the role of Atticus Finch in Aaron Sorkin's Broadway adaptation of Harper Lee's *To Kill A Mockingbird*.

ARTISTIC DIRECTOR

GUY SANVILLE is a professional actor, director, writer, and teacher. He celebrates his 25th anniversary as Artistic Director in May 2020. He has directed over 60 plays for the PRTC, including over 40 world premieres. In addition, he teaches workshops and lectures at the Purple Rose and around the country. He is a proud member of Actors' Equity Association, SAG/AFTRA, and the Stage Directors and Choreographers Society.

MANAGING DIRECTOR

KATIE HUBBARD is so pleased to be managing the business of The Purple Rose for the last 6 years. She previously lived in Milwaukee, WI and was the General Manager of First Stage, a professional children's theater that also houses the largest theater training program of its kind in the nation, as well as being Wisconsin's leader in arts-in-education programming. Katie hails from Rochester, Michigan and received her Bachelor of Arts in Theater from Albion College in 2002. She is also a graduate of the Purple Rose Apprentice Program. Katie is a proud member of the Actors' Equity Association and received her union card back in 2003 while stage managing at The Purple Rose. She could not have this dream job without the love and support of her family.

Nik
&
Jamie



Support

The Purple
Rose
Theatre

You Should
Too!





JOIN THE CONVERSATION



find us on Facebook!
[**www.facebook.com/PurpleRoseTheatre**](http://www.facebook.com/PurpleRoseTheatre)



follow us on Twitter!
[**www.twitter.com/PurpleRoseTheat**](http://www.twitter.com/PurpleRoseTheat)



watch us on YouTube!
[**www.youtube.com/user/PurpleRoseTheatreCo**](http://www.youtube.com/user/PurpleRoseTheatreCo)

STATESIDE



If It Matters
To Michigan,
You'll Hear It
On *Stateside*

Stateside with April Baer,
Michigan's daily statewide talk show.

Mon-Fri at 3 p.m. and 10 p.m.



**MICHIGAN
RADIO** npr

MICHIGAN'S NPR NEWS LEADER

91.7 FM Ann Arbor/Detroit

2019 RUSTIC ROSE THANK YOU



Thank you to our generous 2019 Rustic Rose fundraiser sponsors and everyone who attended and contributed to our event!

DTE
Foundation



Chelsea Rhone LLC

CHEMICAL
BANK

SHINOLA
DETROIT



Encompass
Financial Partners

ASSETMARK

MCLAREN WEALTH
STRATEGIES

CSB
CHELSEA
STATE BANK

Maria Kelly & Peter Largen

Antoinette Pilzner & Daniel Moons

AmeriCan
CREDIT UNION

FORESIGHT
GROUP
Price Solutions That Deliver



OUTLIERS LLC

RICK TAYLOR
REAL ESTATE

Reinhart
REALTORS

A.R. | Brouwer
COMPANY

JEFF KLING | **Reinhart**
REALTORS

LANGETWINS
FAMILY WINERY AND VINEYARDS

Russell
VIDEO
Script to Screen

Vintage Barn Boutique
ANTIQUE & VINTAGE

THRIVENT
FINANCIAL™
Connecting Faith & Finance for good™

Village
CONFERENCE
CENTER



sean carter photography

seniors.scarterphoto.com



Now booking Class of 2021 Seniors!





LA JOLLA
FINE JEWELRY

111 SOUTH MAIN ST. • CHELSEA, MI 48118 • 734-475-0717



SILVER MAPLES
of Chelsea
RETIREMENT NEIGHBORHOOD

The Arts:

BALANCED MIND, BODY &
SOUL IS POSITIVE AGING.

VISIT silvermaples.org/arts-and-healthy-aging

Call today for a tour ► **734.475.4111**

Locally-Owned, Non-Profit Jointly Sponsored by 5 Healthy Towns Foundation and United Methodist Retirement Communities, Inc.

ROADSIGNS

by Jeff Daniels

Additional Program Information

Directing Intern Tamara Ratcliffe

Understudies

Understudies never substitute for listed characters unless a specific announcement for the appearance is made at the time of the performance.

Lanny Seth Hart
Walter Larry Peters*
Robert Zach Fischer*
Harmon. Dan Johnson*
Esther Michelle Mountain*
Tanesha Reina Mystique
Francine Angela Kay Miller*
Darlene Angela Kay Miller*

*Member Actors' Equity Association,
the Union of Professional Actors and Stage Managers in the United States.

Additional Acknowledgments

Chelsea Chiropractic
Bishop Kymani
Laurel McDonald

ROADSIGNS

by Jeff Daniels

Additional Program Information

Directing Intern Tamara Ratcliffe

Understudies

Understudies never substitute for listed characters unless a specific announcement for the appearance is made at the time of the performance.

Lanny Seth Hart
Walter Larry Peters*
Robert Zach Fischer*
Harmon. Dan Johnson*
Esther Michelle Mountain*
Tanesha Reina Mystique
Francine Angela Kay Miller*
Darlene Angela Kay Miller*

*Member Actors' Equity Association,
the Union of Professional Actors and Stage Managers in the United States.

Additional Acknowledgments

Chelsea Chiropractic
Bishop Kymani
Laurel McDonald



Celebrating 29 years!

Consider giving a gift today in support of The Purple Rose Theatre's annual fund. Gifts from donors like you secure our future and allow us to continue to present new work for you for years to come.

Donate online today from your phone or computer!

www.purplerosetheatre.org/giving

Or use one of our envelopes and forms available in the lobby to donate with a check!

Mail to:

The Purple Rose Theatre
137 Park Street
Chelsea, MI 48118

*The Purple Rose Theatre Company is a 501c3 non-profit corporation.
EIN # 38-2946466*



Celebrating 29 years!

Consider giving a gift today in support of The Purple Rose Theatre's annual fund. Gifts from donors like you secure our future and allow us to continue to present new work for you for years to come.

Donate online today from your phone or computer!

www.purplerosetheatre.org/giving

Or use one of our envelopes and forms available in the lobby to donate with a check!

Mail to:

The Purple Rose Theatre
137 Park Street
Chelsea, MI 48118

*The Purple Rose Theatre Company is a 501c3 non-profit corporation.
EIN # 38-2946466*

"JIFFY" *mixes*
CHELSEA MILLING COMPANY



Proud to support
The Purple Rose Theatre
and the Community!

Tours available by appointment
734-475-1361

www.jiffymix.com

take a bow

We're proud and happy to support the Purple Rose
Theatre Company. Thank you for performing a leading role
in our community.



Member
FDIC

chelseastate.bank





BOARD OF DIRECTORS

Jeff Daniels - Ex Officio
 Steven K. Hamp - Board Co-Chairman
 Sheila Ford Hamp - Board Co-Chairman
 Peter Feeney - Vice Chairman
 David Ligotti - Treasurer
 Craig Common - Secretary

Peter Brown Maria Leonhauser
 Charles Craves John Mann
 Philip J. Curtis George Moses
 Charles Eisendrath John J. H. Schwarz, M.D.
 David Larsen

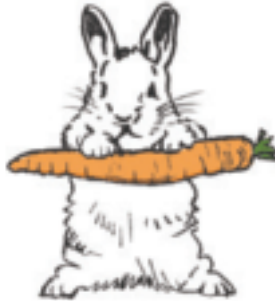
PAST BOARD MEMBERS

*Gail Bauer, *David A. Brandon, *Jeff Daniels,
 *Richard Helppie, *William B. Holmes, Judy Dow Alexander,
 Betty Jean Awrey, Paul Boylan, Anne Colone, John Colone, Jill Corr,
Honorary Melissa Sage Fadim, Ann Feeney, Patrick Freydl,
 Ruth Roby Glancy, Doug Graham, H. Ron Griffith, Sanjay Gupta, M.D.,
 Neil Hawkins, Peter Heydon, Atanas Ilitch, Marcia J. MacCready,
 Paul Martino, William Michels, Timothy L. Nasso, Michael Novak*,
 JoAnne Rosenfeld*, Ben Upton, Ambassador Ron Weiser,
 Dawn Williams, Dr. Steve Yarows

**designates past Board Chairpersons*

**deceased*

Trust the Rabbit



BUMBLE'S

DRY GOODS

120 S. Main Street, Chelsea, Michigan

(734) 433-9703

Open 7 days a week!

Monday through Saturday 10:00 a.m. to 6:00 p.m. Sunday 12:00 p.m. to 5:00 p.m.

MRS. MASON'S
Dark Coffee Brittle



MRS. MASON'S CO.
handmade premium quality

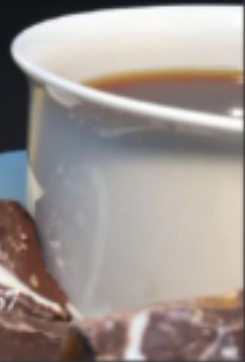
www.mrsmasons.com

619 S. Washington Ave, Royal Oak 48067

248-660-0675 : info@mrsmasons.com



Go ahead.
Indulge.
We'll leave you
alone for a minute.



Volunteers Needed

As a nonprofit, we rely on the generosity of others to help us carry out our efforts.

Ushering:

The Purple Rose welcomes volunteer ushers throughout the season. This is a wonderful way to help and see a show for free!

Call (734) 433-7673

or email Tickets@PurpleRoseTheatre.org to secure your date.

Event Volunteers:

Recruiting now for our 2020 Event Committee!

We welcome anyone with varying time commitments to join our Development/Event volunteer team. Please contact our

Office Manager, Abby Rudnicki, at

Abby@PurpleRoseTheatre.org or (734) 433-7782.



JOIN THE CONVERSATION



find us on Instagram!
[purplerosetheatre](https://www.instagram.com/purplerosetheatre)



find us on LinkedIn!
www.linkedin.com/company/purple-rose-theatre-company



find us on Pinterest!
www.pinterest.com/purplerosetheat/



"Wesley's Catering is proud to work with Purple Rose Theatre on events like the 25th Anniversary Celebration and the Rustic Rose Summer Benefit. I look forward to creating something fresh and innovative for you."

— Chef Todd Brown

www.WesleysCatering.com
(734) 646-0858

PRODUCTION STAFF

Assistant Stage Manager	Angie Kane*
Musical Director & Music Arranger	Angie Kane
Composers	Ben Daniels
.	Jeff Daniels
Choreographer	Rhiannon Ragland
1st Assistant Stage Manager	Anna Jayne Szabo
2nd Assistant Stage Manager	Jessica Klimushyn
Technical Director & Master Electrician	Gary Ciarkowski
Scene Shop Assistants	Lindsey Briggs
.	Kate Voigt
Assistant to the Prop Designer	Amanda Buchalter
Assistant to the Master Electrician	Peter James Florian
Assistant to the Sound Designer	Romina Ramirez
Backstage Crew	Anna Jayne Szabo
Crew Back-up	Jessica Klimushyn
Light Board Operator	Peter James Florian
Sound Board Operator	Romina Ramirez
House Manager	Amanda Buchalter
Production Box Office	Lindsey Briggs
.	Kate Voigt
Rehearsal Videographer & Sound Technician	Lucas Daniels
Social Media Intern	Thomas Macias
Public Relations Intern	Devin Faught
Marketing Analyst	Michael Lopetrone
Production Photographer	Sean Carter
Archival Photographer	Danna Segrest
Videographer	Robert W. Hubbard
Program Advertising Coordinator	Holly Bulko
Production Graphic Design	Daryl L. Fazio

*member of Actors' Equity Association, the Union of
Professional Actors and Stage Managers in the United States.

ACKNOWLEDGMENTS*

2188 Studio
Cynthia Avery
Chelsea Area Garden Club
Chelsea District Library
Chelsea House Victorian Inn

North Lake United Methodist Church
George Till
Gestamp
Waterloo Upholstery
Wesley's Catering

*Please see program insert for additional acknowledgments.

THE 39 STEPS

adapted by Patrick Barlow
from the novel by John Buchan
from the movie by Alfred Hitchcock
Licensed by ITV Global
Entertainment Limited
and an original concept by
Simon Corbal & Nobby Dimon
Jan. 30-Mar. 8, 2020
Murder. Mystery. Comedy.
Shaken not stirred.



TIPPING
POINT
THEATRE.

LIVE PROFESSIONAL THEATRE IN DOWNTOWN NORTHVILLE

Tickets 248.347.0003 | tippingpointtheatre.com

the DIO

IT'S

ONLY
MURDER

JANUARY 31ST - MARCH 1ST

WWW.DIOTHEATRE.COM (517) 672-6009



ADMINISTRATIVE STAFF & ARTISTS

Founder	Jeff Daniels
Artistic Director	Guy Sanville
Managing Director	Katie Hubbard
Development Director	Aubrey Martinson
Company Manager	Amy Klain
Technical Director & Master Electrician	Gary Ciarkowski
Apprentice Chief & Literary Manager	Michelle Mountain
Director of Educational Programming	Michelle Mountain
Development Associate	Thomas Macias
Office Manager	Abby Rudnicki
Group Sales & Box Office Manager	Julia Garlotte
Campaign Consultant	Margarite Fourcroy
Development Assistant	Patricia Stankey
Box Office Assistants	Cyndi Bertsos • Rob Caplis • Jack Meloche
.....	Danna Segrest • Megan Wesner
Apprentices	Lindsey Briggs • Amanda Buchalter
.....	Peter James Florian • Jessica Klimushyn
.....	Romina Ramirez • Anna Jayne Szabo • Kate Voigt
Acting Instructors	Caitlin Cavannaugh • Carey Crim • Jeff Daniels
.....	Angie Kane • Lauren Knox • Thomas Macias
.....	Michelle Mountain • Rhiannon Ragland • Guy Sanville
Playmakers Playwrights	Carey Crim • Jeff Daniels • Jeff Duncan
.....	Cloe Mavis Gifford • Matthew Gwynn • Lauren Knox
.....	Brian Letscher • Matt Letscher • David MacGregor
.....	Julie Marino • Robert Milne • Megan Pinto • Lanford Wilson
Resident Properties Designer	Danna Segrest
Resident Artists	Bartley H. Bauer • David Bendena • Jon Bennett
.....	Dan Bilich • Ryan Black • Will Bryson • Caitlin Cavannaugh
.....	Gary Ciarkowski • Mark Colson • Susan Graves • Carey Crim
.....	Ben Daniels • Jeff Daniels • David Daoust • K. Edmonds
.....	Devin Faught • Casaundra Freeman • Katie Hubbard
.....	Reid G. Johnson • Sarab Kamoo • Angie Kane • Amy Klain
.....	Lauren Knox • Jeremy Kucharek • Brian Letscher • Matt Letscher
.....	Alex Leydenfrost • David MacGregor • Thomas Macias
.....	Randolph Mantooth • Janet Maylie • Richard McWilliams
.....	Rusty Mewha • Angela Kay Miller • David Montee
.....	Michelle Mountain • Vincent Mountain • Shelby Newport
.....	Aphrodite Nikolovski • Wayne David Parker
.....	Sarah Pearline • Brad Phillips • Jim Porterfield
.....	Rhiannon Ragland • Dawn Rivard • Guy Sanville • Vanessa Sawson
.....	Danna Segrest • Kristin Shields • Noele Stollmack • Paul Stroili
.....	Kate Thomsen • Lynch R. Travis • Meghan VanArsdalen
.....	Tom Whalen • Dana L. White • Suzanne Young • Will David Young
Associate Artists	Julia Garlotte • Matthew Gwynn
.....	George Till • Adair Whalen
Accounting Services	Sinelli & Associates



A2CT's 90th SEASON!

Urinetown, The Musical
September 12-15, 2019

My Three Angels
October 24-27, 2019

The Fantasticks
January 9-12, 2020

Jeeves Intervenes
March 12-15, 2020

Godspell (2012)
April 23-26, 2020

Matilda, The Musical
June 4-7, 2020

Tickets and information at
www.a2ct.org | 734.971.2228

TIBBITS

ABBAMANIA & Night Fever
A Tribute to ABBA & The BeeGees

Jan. 25, 2020 at 7pm

Coldwater Comedy Fest
Three Professional Comedians

Mar. 14, 2020 at 7pm

2020 Academy Award

Nominated Shorts
Live Action & Animated

Feb. 9, 2020 at 2pm

Downtown
Coldwater, MI

Tibbits.org • 517.278.6029

A Wilde Theatre

Where anything can happen!

March 6 - March 22, 2019

Friday and Saturday at 8:00 p.m.

Sunday at 2:00 p.m.

The Wild Women of Winedale

By Jessie Jones, Nicholas Hope, and Jamie Wooten.

Authors of Dixie Swim Club and
Always a Bridesmaid

Directed by Lynn Wilde

Reserved Tickets on Sale Now!

www.AWildeTheatre.com

Like us on Facebook! 

Performances at the
Brighton Coffeehouse
and Theater

The Brighton



361 W. Main Street
Brighton 48116

Live Professional
Theatre

A MESSAGE FROM THE BOARD OF DIRECTORS

From the beginning, The Purple Rose Theatre Company has aspired to be the beacon of American theatre. Founded in 1991 by Jeff Daniels, our mission has been to develop opportunities for theatre professionals while entertaining, enriching and building a loyal following. Audience commitment to the company has resulted in a fiscally solvent and highly respected arts and community partnership.

The PRTC envisions an even brighter future with increased national visibility and enriched economic and artistic health. Well-established and critically acclaimed, The Purple Rose Theatre Company will continue to be the home of world-class, original American theatre.



The Director is a member of the
**STAGE DIRECTORS AND CHOREOGRAPHERS
SOCIETY**, a national theatrical labor union.

The Purple Rose Theatre Company is a member of the Ann Arbor/Ypsilanti Regional Chamber, Arts Alliance, Greater Brighton Area Chamber of Commerce, Chelsea Area Chamber of Commerce, Culture Source, Dexter Area Chamber of Commerce, Greater Jackson Chamber of Commerce, and Saline Area Chamber of Commerce.

Actors' Equity Association (AEA) was founded in 1913 as the first of the American actor unions. Equity's mission is to advance, promote and foster the art of live theatre as an essential component of our society. Today, Equity represents more than 40,000 actors, singers, dancers and stage managers working in hundreds of theatres across the United States. Equity members are dedicated to working in the theatre as a profession, upholding the highest artistic standards. Equity negotiates wages and working conditions and provides a wide range of benefits including health and pension plans for its members. Through its agreement with Equity, this theatre has committed to the fair treatment of the actors and stage managers employed in this production.

AEA is a member of the AFL-CIO and is affiliated with FIA, an international organization of performing arts unions. For more information, visit www.actorsequity.org.

ADVERTISE IN OUR PLAYBILL



Please contact Holly Bulko to
reserve ad space in our
2019-2020 playbills
at hollyrbulko@gmail.com.

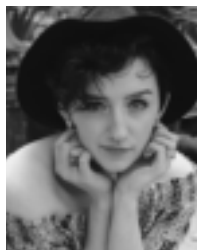
**Ad deadline for our Spring production,
“Paint Night” by Carey Crim, is March 5, 2020.**

size	2 show rate	single show
inside covers (4.5" x 7.5")	\$3000 (\$1500 per ad)	\$1525
full (4.5" x 7.5")	\$1350 (\$675 per ad)	\$700
half (4.5" x 3.625")	\$800 (\$400 per ad)	\$425
quarter (2.125" x 3.625")	\$475 (\$237.50 per ad)	\$250

APPRENTICE PROGRAM

Patterned after the program Jeff Daniels experienced at the Circle Repertory Company, our apprentice program gives young artists an opportunity to work and learn in a professional theatre setting.

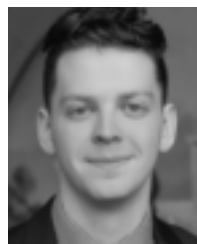
2019/2020 APPRENTICE CLASS



LINDSEY
BRIGGS
Grand Blanc, MI
BFA in Theatre
Performance
University of
Michigan-Flint



AMANDA
BUCHALTER
Canton, MI
BS in
Communication,
BS in Theatre Arts
Eastern Michigan
University



PETER JAMES
FLORIAN
Kalamazoo, MI
BFA in Acting
Michigan State
University



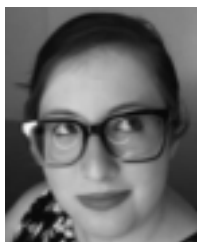
JESSICA
KLIMUSHYN
Royal Oak, MI
BFA in Acting,
Minor in General
Business
Western Michigan
University



ROMINA RAMIREZ
Sterling Heights, MI
BA in Theatre
Wayne State
University



ANNA JAYNE
SZABO
Romeo, MI
AA in Theatre
Lansing
Community
College



KATE VOIGT
Bloomfield
Township, MI
BA in Theatre,
Minor in Creative
Writing
Denison University

Information and applications available at purplerosetheatre.org.



When her father dies, Lissie returns to her family's apple orchard after escaping from there with her brother Roger many years before. But a chance encounter with an old flame conjures haunting family secrets she thought she'd left behind. As Lissie tumbles down a rabbit hole of memory and grief, she must choose whether to preserve her tangled past—or burn it to the ground.

Directed by **David Welber** (Admissions, *The Now and the Then*), featuring **Alysa Kalaske** (*Bright Half Life*), **Matthew Swift**, and **Jeremy Kucharski** (Admissions).

Performances are Thursdays, Fridays, and Saturdays at 8:00pm and Sundays at 2:00pm.

APPLE SEASON

BY E. M. LEWIS
JAN. 31 - FEB. 23, 2020



Theatre NOVA, 410 W Huron St., Ann Arbor, MI 48103
Tickets: \$22 (Pay-what-you-can tickets available)
theatreNOVA.org • 734-635-8450 • A2theatreNOVA@gmail.com



Tecumseh Center for Arts
Shirley Todd Herrick Theater

2019 - 2020 TOURING SEASON

Visit our website to see our full lineup of events!



JOHN LATINI | Nov. 2 | 7:30 pm | \$23-25

Award-winning musician and two-time Detroit Blues Champ, John Latini personifies the best that Michigan's rock history has to offer: an honest, no-nonsense commitment to real songs about real people.

LEGENDS OF MI COMEDY | Jan. 25 | 7:30 pm | \$25-30

TCA is hosting legendary comedians Dave Landau (Last Comic Standing), Bryan McCree (MADtv), Bill Bushart (Detroit Comedian of the Year), Norm Stulz (Comedy Central) & Steve Smargon (Bi-polar Marine)!



NY, NY DUELING PIANOS | Feb. 15 | 7:30 pm | \$25-40

Drew and Kin are back! This comedy-based dueling piano show is always a fun, high-energy party-in-a-box! Pianists sing and play everything from Jimmy Buffet, Billy Joel, and Tom Petty, to Lady Gaga, Elvis, and Katy Perry.

LE CIRQUE ESPRIT | March 7 | 4:00 pm | \$25-30

Featuring New York City's renowned ABCirque and live orchestrations by the contemporary group CORDIS, Le Cirque Esprit presents its latest creation, "Spirit of the Machine." Based on the Greek mythological tale of Talos.



PHASE 5 | April 25 | 7:30 pm | \$23-25

Phase 5 brings their authentic recreation of Motown's greatest hits to the TCA stage. One of the most electrifying acts to come out of Detroit, Phase 5's smooth jazz mixed with Hip Hop and R&B will leave you wanting more.

400 N. Maumee St. Tecumseh, MI | 517.423.6617 | www.TheTCA.org





SPOTLIGHT ON DEVELOPMENT

The Purple Rose Gang

The Purple Rose Gang is our multi-year giving club at the PRTC. This special “Gang” is comprised of donors who have made a minimum three-year pledge, at the \$10,000 a year level to the theatre.

The “Gang” will be recognized with a special plaque on the wall of the theatre lobby, a commemorative pin, and acknowledgements in our play production programs and website. Ongoing initiatives will continue to be put in place to properly recognize the individuals committed to this special giving program at The Purple Rose.

Members of The Purple Rose Gang to date are:

David A. Brandon Foundation
Peter Brown & Maria Leonhauser
Craig & Donna Common
Philip J. Curtis
The Feeney Family
The Hamp Family
Annmarie & Neil Hawkins
Richard & Leslie Helppie
William B. Holmes Family
Tom & Debby McMullen
Peter & Carol Walters
Ron & Eileen Weiser
Jeff & Dawn Williams

Members of the “Gang” as of December 19, 2019

For more information on how you can become a member of The Purple Rose Gang, please contact Development Director, Aubrey Martinson, at 734.433.7782 ext. 29.

The PRTC is a 501(c)(3) federally tax-exempt, Michigan non-profit organization. Your donations are tax deductible to the maximum allowed by law.



INVENTION & REINVENTION

2019-2020

DR. FOX AND THE IMPOSSIBLE CURE FOR DEATH

Book & Music by Benedict Braxton-Smith
Book & Lyrics by Megan Peterson
SEPTEMBER 21 - 22, 2019

FRANKENSTEIN

Adapted by Quinn Mattfeld
OCTOBER 11 - 20, 2019

TWELFTH NIGHT

By William Shakespeare
NOVEMBER 8 - 17, 2019

FRESHMAN SHOWCASE

The Power of Spontaneous Invention
NOVEMBER 21 - 24, 2019

INTO THE WOODS

Music & Lyrics by Stephen Sondheim
Book by James Lapine
FEBRUARY 14 - 23, 2020

BONNETS: HOW LADIES OF GOOD BREEDING ARE INDUCED TO MURDER

By Jen Silverman
MARCH 13 - 22, 2020

MARIAN, OR THE TRUE TALE OF ROBIN HOOD

By Adam Szymkowiak
APRIL 10 - 19, 2020

MSU DEPARTMENT OF THEATRE

THEATRE.MSU.EDU
WHARTONCENTER.COM OR 1-800-WHARTON

OUR 2019-2020 SEASON

40 years of building imaginations...

Strega Nona and the Magic Pasta Pot

October 24 - 26*

A Christmas Carol

December 5 - 8

Frog and Toad

January 23 - 25*

Under the African Sky

February 20 - 22

Coding to the Moon: Margaret Hamilton & the Apollo Missions

(WORLD PREMIERE)
March 4 - 7

The Tale of the Mischiefous Bunny

March 25 - 28*

Treasure Island

April 29 - May 3

*Special activities at
the theater this day



All performances take place at
Towsley Auditorium - Morris Lawrence
Building, Washtenaw Community College

wildswantheater.org
(734) 995-0530

2019-2020 SEASON 14



The Safe House

by Kristine Thatcher
Oct. 3 - Nov. 3, 2019
A Michigan Premiere



A Christmas Carol: The Radio Show

by David Alberts
Nov. 21 - Dec. 22, 2019

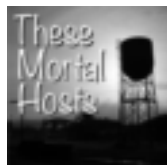


900 Miles to International Falls

by Annie Martin
Jan. 30 - Mar. 1, 2020
A World Premiere

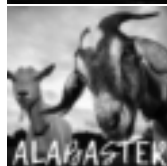
These Mortal Hosts

by Eric Coble
Mar. 26 - April 26, 2020
A Michigan Premiere



Alabaster

by Audrey Cefaly
May 21 - June 21, 2020
A National New Play Network
Rolling World Premiere



Be Here Now

by Deborah Zoe Lauffer
July 9 - Aug. 9, 2020
A Michigan Premiere



WILLIAMSTON THEATRE

122 S. Putnam Street, Williamston MI 48895
517-655-SHOW (7469) ~ www.williamstontheatre.org



THE **PURPLE ROSE** THEATRE COMPANY

SEASON UNDERWRITERS & PRODUCTION SPONSORS



Sponsoring a Purple Rose production is making a personal investment in American theatre and in a community we all share.

Sponsor benefits are offered at varying levels of support and appeal to a wide range of interests. Depending on your sponsorship level, exclusive benefits may include priority seating, complimentary and discounted tickets, recognition in publications, invitations to new play readings, rehearsals, and opening night parties, VIP event tickets, complimentary signed scripts, private backstage tours and more.

We want you to have the very best sponsorship experience possible; we will work closely with you to customize benefits which respond to your specific interests and that best meet your needs.

For more complete season underwriting, production sponsorship, and donor benefit information, please contact Development Director, Aubrey Martinson, at 734.433.7782 ext. 29 or via email at Aubrey@purplerosetheatre.org.

The Purple Rose Theatre Company is a 501(c)(3) federally tax-exempt, Michigan non-profit organization. Your donations are tax deductible to the maximum allowed by law.

2019-2020 Season Underwriters:

Ford Motor Company Fund
The Hamp Family
The Matilda R. Wilson Fund
Richard & Jane Manoogian Foundation
The Shubert Foundation

2019-2020 Production Sponsors:

Chelsea Comfort Inn & Village Conference Center
Chelsea Rhone, LLC
Chelsea State Bank
Philip J. Curtis
Domino's
Neil & Annmarie Hawkins
Michigan Council for Arts & Cultural Affairs
National Endowment for the Arts

THE PURPLE ROSE THEATRE COMPANY

INDIVIDUAL GIVING



YOUR GIFTS AT WORK!

We are deeply grateful for gifts at all levels. Your tax-deductible donation to The Purple Rose can pay for . . .

\$50-75	a playwright fee for one Greenhouse or workshop
\$125	special effects for a single show
\$250	an Understudy's salary for 10 days
\$500	an Actor's salary for one week
\$1,000	professional design expenses for a production
\$1,500+.PRTC event sponsorship
\$5,000+ sponsoring a PRTC production
\$10,000+Purple Rose Gang sustainers

Annual donations of \$250 or greater allow for advance ticket service for one year, with the ability to purchase tickets two weeks before the general public. For a complete listing of donor benefits, please visit **www.purplerosetheatre.org/giving**.

For more complete season underwriting, production sponsorship, capital projects, deferred giving, and benefit information, please contact:

Development Director, Aubrey Martinson, at
734.433.7782 ext. 29 or Aubrey@purplerosetheatre.org.

To make a donation to The Purple Rose Theatre Company online, visit www.purplerosetheatre.org. Gifts can also be made by including PRTC in your will, by mail or over the phone:

The Purple Rose Theatre Company
137 Park Street
Chelsea, MI 48118
734.433.7782

The PRTC is a 501(c)(3) federally tax-exempt, Michigan non-profit organization. Your donations are tax deductible to the maximum allowed by law.

THANK YOU!

We thank you for your generous campaign support. Your gift is at the heart of everything The Purple Rose accomplishes through its Grow the Rose campaign.

We make every effort to appropriately recognize our wonderful donors at the PRTC. If your information is inaccurate or not listed below, and you believe this is in error, please contact the Development Department at 734.433.7782, and we will make this correction to our records as soon as possible. As always, we appreciate our positive relationships with our donors. Thank you!

(Annual Gifts/Pledges reflected below were received between November 19, 2018 - December 19, 2019.)

MAJOR BENEFACITOR CIRCLE

(Gifts of \$25,000 and above)

Anonymous Foundation	Maria Leonhauser & Peter Brown*
Anonymous Foundation	Richard & Jane
Anonymous Foundation	Manoogian Foundation
Community Foundation for	Tom and Debby McMullen*
Southeast Michigan	Matilda R. Wilson Fund
Philip J. Curtis*	Michigan Council for Arts &
Peter & Patti Feeney*/	Cultural Affairs
Chelsea Rhone, LLC	The Shubert Foundation Inc.
Ford Motor Company Fund	Peter & Carol Walters*
Sheila & Steve Hamp*	

PREMIERE CIRCLE

(Gifts of \$10,000 to \$24,999)

Ieva Berglands*	David A. Brandon Foundation
Jim & Debbie Beuche*	DTE Energy Foundation
Chelsea State Bank	Alfie & DeAnn Faulkner
Mike & Melonie Colaianne Fund	Neil & Annmarie Hawkins*
<i>-In Memory of My Brother,</i>	Helppie Family Charitable
<i>Todd Lancaster</i>	Foundation
Craig & Donna Common/	Outliers LLC
Common Grill*	Promanas Group

PRODUCER CIRCLE

(Gifts of \$5,000 to \$9,999)

Jack & Susan Carlson	Jeff Hall & Chad Losey
Chelsea Comfort Inn & Village	Peter & Danialle Karmanos
Conference Center	Ying Li & Oliver Varban*
Chemical Bank	John & Cindy Merrifield
Chuck & Jan Dominick	Real Corporation
Domino's	Shinola
Charles & Julia Eisendrath*	Thrivent Financial*
Michael & Ann Feeney* <i>-In memory</i>	Ron & Eileen Weiser
<i>of Nancee Sanville</i>	

**Also, World Premiere Fund benefactor*

(continued)

PATRON CIRCLE

(Gifts of \$2,500 to \$4,999)

Charley & Kathy Budd	Aubrey Martinson
Robert Caldwell	McLaren Wealth Strategies
Jeff & Kathleen Daniels	Melanie & George Moses
John Daniels	Deanna Olsen
Detroit Lions Foundation	Antoinette Pilzner & Daniel Moons*
Encompass Financial	R. H. Bluestein & Company
Partners, LLC	Baiba Rahn*
James Evering	Russell Video
Lloyd & Judi Ganton*	Kenneth & Barbara Shay
Carl Hansen &	Leslie Shipley
Sylvia Vance Hansen	Ugly Dog Distillery
Mabel Harris Trust	UnitedHealth Care
John Hochrein	Diane & Marcus Vale
Maria Kelly & Peter Largen	Vintage Barn Boutique
Raeann Kusch	Dr. Douglas Weaver &
David & Celia Larsen*	Judy St. Romain
John & Anne Mann*	Willis & Jurasek, P.C.

ARTISTIC DIRECTOR CIRCLE

(Gifts of \$1,000 to \$2,499)

American 1 Credit Union	Nick Genova & Susan Agar-Genova
American Title Company of Jackson	Richard & Leslie Helppie*
Essel & Menakka Bailey	Robert & Joyce Hetzler
Emily Bandera M.D.	Katie & Robert Hubbard
Lee & Floy Barthel	Greg Janz & Cindy Jovanelly
Micki Berg	Willard H. Johnson
Belinda Bicknell & Gary Witus	Jeff Klink
Craig & Bev Brass	Kohler
Paul & Karol Buchholz	Larry & Debra Kraus
Dave & Mary Ann Busfield	Jeff & Brenda Lane
Irene & William Bushaw	LangeTwins Family Winery
Kathy Carter & Mack Ruffin	& Vineyards
Ms. Casto & Mr. Horner	Liebler Family Foundation*
John & Anne Colone - <i>In memory of</i>	David Ligotti & Karen Quenneville*
<i>Nancee Sanville</i>	Bob & Terri Lutz*
Constance & James Cook	Martin Family Foundation*
Charles & Susan Craves*	Melissa & Dan McCance
Mort & Renee Crim	PPG Neurosurgery*
Roseann Dailey	Bob & Debbie Merion
Jeff & Barbara Duncan	Merkel Furniture & Carpet One
EDSS	Lee & Marge Meserve
Jim Eng & Pat Randle	Joe & Melanie Parin
Mr. & Mrs. Donald & Marjory Epstein	Dominic & Julie Pinciotti - <i>In memory</i>
Foresight Group	<i>of Nancee Sanville</i>
Mark A. Frank Family	Plum Market
Robyn Frey & Lawrence King	Rick Powell & Rita Ayyanger, M.D.
<i>*Also, World Premiere Fund benefactor</i>	<i>(continued)</i>

ARTISTIC DIRECTOR CIRCLE

James Rine	The Apple Matching Gifts Program
Ami & Prue Rosenthal	Michael & Cynthia Thomas
Richard & Ellen Sandor Family	Catherine Upton & David Wesner
Foundation	Doug & Susan VanArsdalen
Dr. Lynn Schachinger &	Jeffrey & Amy Voigt
Dr. Sheryl Ulin*	Walter J. Weber, Jr.
Jackie Schiller	Family Foundation
Brian & Denise Schuh	Mr. Warren & Mrs. Orlowska-Warren
Joe Schwarz M.D.*	Kevin & Betsy Watson
Ellie Serras <i>In honor of Dave Ligotti</i>	Eric & Sherry Wexler
Peter & Nettie Severn	Jeff & Dawn Williams*
Brooks & Nancy Sitterley	Theresa Wong
George & Nancy Sloan	Bill & Pam Wood*
Daniel & Patricia Stankey*	Douglas Wood & Kay Holsinger
The Sterken Family Foundation	Brian & Amy Woodruff
Dennis & Jan Sullivan	J.D. & Joyce Woods
Rick Taylor	

PLAYWRIGHT CIRCLE

(Gifts of \$250 to \$999)

Anonymous	Todd & Penny Blackburn
William & Arvalene Ackley	The Boeing Company
Linda Albertzart	Ronald & Mimi Bogdasarian
John & Stephanie Alexander	Marcoux, Allen, Bower,
Darryl & Sharon Allen	& Kendall, P.C.
George & Jean Alpervitz	Kenneth Boyer
Diane Andrasik	Mr. & Mrs. William Bozgan
Ann Arbor Implant	Annette Bragalone
& Periodontal Center	Patricia Brainard & Scott Tatro
Steve & Ann Arbaugh	Jim & Robbie Brandstatter
Rosemary Austgen	Greg Brautigan
Cynthia Avery	Deron Brod
Bagitude! Karla Staley	Barbara Bronitsky
Robert & Mary Baird	Wendy & Scott Broshar
Andrew Ballnik	David Brown
David Barnes & Deborah Ladenheim	Jason Brown
Dr. Beverly Baroni	Pamela Brown
Brian & Heidi Bartes	Tim & Cynthia Brunett
Clare & John Baxter	Ronald Burkman
Eugene & Lori Beach	Dennis & April Byrne
Marlene Beck	Donna Carpenter
William Belanger	Graham & Suzanne Carpenter
Hillary Bennett	Trudy Carpenter & Jim Richardson
Patricia Benson	Michael & Laura Carry
James A. Bergman Trust	Margaret Caveney
Don & Linda Bernardi	Scott Chaiken
Amanda Black	Chamberlain Family Foundation
	Charity Fundraising

*Also, World Premiere Fund benefactor

PLAYWRIGHT CIRCLE

Chelsea Cornerstone LLC	Otto & Lourdes Gago
Chelsea House Victorian Inn	Ronnie Gainer
Blair & Clare Clark	Steven & Martina Garland
Brian & Cheryl Clarkson	Kim & Diane Gasior
Larry Clayton	Robert & Henrietta Georgevich
Cleary's Pub	Jim & Candy Gildea
Larry & Jennifer Coates	David & Maureen Ginsburg
Cole Family Foundation	Patrick Gipson
Coleman's Corn Maze	John & Patricia Glidewell
Michael Coletta	Frank & Emily Gobright
Daniel & Muriel Converse	Catherine Goebel
James M. Cook	Judith & Richard Golden
Nancy Cooper	Mark & Brenda Goodman
Kevin & Patricia Corr	Joanne & Ted Gray
Creative Arts Studio	Larry & Martha Gray
Becky Crump & Paul Gottschalk	Robert H. Gray & Susan M. Smith
Paul & Barbara Cumming	Michael & Libby Greanya
Reiley Curran	Two Storyline Project LLC*
David & Denise Currin	Deborah Greenspan
Steven Cyncewicz	Ron & Sharon Griffith
Vicki Daane	William Groves
Carey Crim & George Defotis	Dave Gunstrom & Katherine Forsythe
Jon & Amy Devine	Vasu Gupte
Fred & Sally Dickinson	John & Mary Ann Guthrie
Patrick & Robin Dickson	Eric Haag & Julie Nurnberger-Haag
William & Robin Dickson	Brian & Kirsten Hallstrom
Don Black	Fiona Hankenson
James & Cathie Dries	Jeff & Debra Hardcastle
Kenneth Duck & Mary Gallagher	Woody & Susan Harrington
David & Joanne Duff	Jim Heaton & Lou Ellyn Green
Sandy Duncan	Ross Hemphill
Rita & Mort Dunlop	Jeff & Heather Hephner
Tom & Lynn Dunn	Ron Hicks & Leslie Shipley
Bonnie Dzendzel	Glenn & Lisa Higgins
Todd Dziobak	Molly Hilton
Vincent & Michelle Elie	James & Sharon Hobson
Sue & Bob Elkins	Daphne Hodder
Helen Etkin	Jeffrey & Maxine Hoffman
Executive Education, Inc.	Joel & Kathy Hoffman
Damian & Katherine Farrell	Mike & Nancy Hollerbach
James Finzel	Kathy Hopps
Mike Foresman	Alice, Rowell & Penny Huesmann
Randall & Christine Forsch	Patricia A. Huntington
Robert & Diane Fox	Ellen Ives & Colleen Johnson -In
Perry & Elenor Francis	<i>memory of Patricia Hobar and in</i>
Judith Freedman	<i>honor of all the Purple Rose Theatre</i>
Alice Freshour	<i>Company Apprentices past, present,</i>
Bill & Boc Fulton	<i>and future!</i>
G L & A, LLC	Rhonda Jacobs
	Jay & Valentina Jindal

*Also, World Premiere Fund benefactor

(continued)

PLAYWRIGHT CIRCLE

Jennifer John	Craig McKee
Michael Jule	Paul & Jan McOske
Michael & Linda Kaneris	Donald & Marilyn Meier
Wendy & Kent Kanipe	Hank & Liesel Meijer
Carol & Peter Kappus	Steve & Rhonda Melchi
Thomas & Linda Kelleher	Rashmi Menon
Jim Keller & Mary Ellen Hoy	Jack & Mary Ann Merkel
Sally & David Kennedy	Pat & Sandy Merkel
James & Patricia Kessler	Jim & Betsy Michaud
Paul & Leah Kileny	Robert & Shelagh Miller
David Kiley	Daniel Minzy
Brian Klaus	The Richard & Nancy Monk
Jewelry Set In Stone	Charitable Fund
David & Judy Konst	William & Jeanne Nance
Julie Koss	Janet & Mark Nisbett
Barb & Gene Krolak	Richard Northway
Karen Kruise	John & Lexa O'Brien
Richard & Melanie Kursinsky	Larry & Melanie Odom-Groh
Brian Kusch	Edmund & Jane Outslay
Helen Lancaster	Nancy Owens
David Langendorfer	Donna Parke
John Langmore	John & Mary Parker
Brandon Layne	Janet Peacock
Aaron & Heather Letscher	Eric Peterson & Kristin Langellier
Amy & Jason Lindauer - <i>In memory of</i>	Barbara Petoskey & James Salay
<i>Nancee Sanville</i>	Rob & Deb Piatkowski
Herbert & Karla Linkner	Max & Sherri Plank
John Liskey	Milene Plisko
Suzette Lixie	Lee & Sandra Porterfield
Janet Lockwood	Mike & Jane Potee
Elizabeth Long	Print-Tech
Dennis Lopatin	Paul & Barb Purdue
Tony & Betty Lorenzi	Ann & Lou Raden
Dean & Gwen Louis	Rauser Family
John Loveless	Tim & Paula Reuille
Neil Lucas	Brian Reynolds
Debbi & Gary Maki	Timothy Richards
Bill & Sue Maloney	& Constance McGuire
Michael & Pamela Marcovitz	Phillip & Nora Rieves
Mark Leventer M.D. & Kathleen	Mark & Kathy Roeser
Anzicek D.O. <i>In memory of</i>	Mike & Anne Roman
<i>Nancee Sanville</i>	Drs. Mark & Karen Harlow
David Marold & Sheila York	Rosentraub
Brenda & Chuck Marshall	George Aler & Elyce Rotella
Ann Martin & Russ Larson	Rudolf E. Wilhelm Fund
Frank Martin	Robert Ruskin M.D.
David & Marjorie Mastie	Deborah Rutherford
Dakin Matthews	Joan Sampieri
Terri & Richard McCalla	Perry Samson & Deborah Gibson
Griff & Pat McDonald	Jim & Mary Savage

*Also, World Premiere Fund benefactor

(continued)

PLAYWRIGHT CIRCLE

Julia Schachinger	Touchstone
Randy & Marita Schiffman	Travis Pointe Country Club
Paul Schissler & Anne Nauts	Phil Tuchinsky
Frederick & Diane Schmid	Roger & Dolly Tworek
Michael Schroer	Bob & Susie Ufer
Annabel Schrot	ULitho
Aileen Mengel Schulze <i>-In memory of</i>	Barbara Underwood & David Patria
<i>Nancee Sanville</i>	Karen Valvo
Secret Crisis Comics	John & Susan Wacksmuth
John & Cynthia Secrist	Wendy Wahl & William Lee
Stuart & Angela Sedlacek	Phil Walton
Danna & Wade Segrest	Waterloo Upholstery
Tony & Elizabeth Sensoli	Neal & Susan Weinberg
Candice Shavalia & David Strauss	Sandra Weintraub
Richard Sherburne	Robert Wendt & Judith Pheatt
Thomas & Mary K Shields	Deborah Werner
Jean & Thomas Shope	Wesley's Catering
David & Nancy Siegel	Rita Wetzel
Ed & Kathy Silver	Kate Whitaker
Peter & Sharon Silveri	George S. White & Lynda Allen
Jennifer Sinclair*	Jason Wickman & Amy Mitchell
Matt Burke & Vicki Sisteck	Shirley Williams
Jennifer Sinclair*	Tim & Linda Willibey
Matt Burke & Vicki Sisteck	Karen Wilson-Smithbauer
Tim Smalley & Sara Dansky	Jack & Friedelle Winans
Jeff Spindler	Mike & Diane Worthing
Katherine Spindler	James & Dianna Wright
Stella Stephens <i>-In memory of</i>	Steve & Dayle Wright
<i>James R Stephens</i>	Steven Yarows
Bill & Andrea Stickney	The Standard Bistro
Jeff Stoller	James & Nancy Zajdel-Wright
Saundra Stortz	Jerome & Susan Zake
Tennille Taraszkiewicz	Stan & Kathy Zasuwa
George & Mary Tewksbury	Stephen & Jane Zawistowski
The Acting Company	Paul A. & Imogene Zimmermann
Emily & David Seitz	Zou Zou's Cafe
David & Caren Thompson	Howard & Faye Zuckerman
David Timm & Mary Przygocki	

CAST CIRCLE

(Gifts of \$100 to \$249)

Terry & Cindy Ahern	Marilynn Arnold
Amazon Smile	Gary A. Bailey
Christine Anderson	Rodney Barron
Ann Arbor Distilling Company	Bart & Alisa Bauer
Applied Storytelling	Alan Baum

*Also, World Premiere Fund benefactor

CAST CIRCLE

Stephen C. Bayne	Karen Dillon
& Sharon K. Grayden	Molly Dobson
Henry & Molly Bazydlo	Robert & Brenda Doral <i>-In memory of</i>
Steve Berglund	<i>Nancee Sanville</i>
Peter Bertocci	Skip & Michelle Dorrington
Leeds & Margaret Bird	Linda Dowsett
Judi & Ed Davidson	Dr. Daniel Pipoly & Cynthia Pipoly
Bivouac, Inc.	Anonymous <i>-In memory of Nancee</i>
Ryan Black	<i>Sanville</i>
Thomas & Mary Steffek Blaske	Thomas Drinkwater
Bob Bluhm	Deborah Eastman
& Sherle Abramson-Bluhm	Daniel Eckhout
John & Lindsay Bogdasarian	Peggy & Ted Elliott
John & Leora Bowden	Donald Enderby
Mary Jane Bower	Diana Evans
Paul Boylan	Don & Gwen Evich
Joel Bregman & Elaine Pomeranz	Michael Falatine
Evelyn Burton	Devin Faught
Christina Cattell	Liz & Sam Febba
Michael Champ	L. Alan & Nancy Finlayson
Cherry Republic	Jane Fitzgerald
Eunice & Mark Chylla	Janet & Scott Fogler
Martha Clapsaddle	Jeff Frank
Michael & Janice Cook	Barbara Fulton
Jan & Scott Cooper <i>-In memory of</i>	Judith Gardzinski
<i>Nancee Sanville</i>	Julia Garlotte
Steve Cotner & Debby Peters	Erika George
James & June Coyne	Ariel Gold
Karen Crawford & Bill Welch	Maryann & Marv Guenther
Larry & Jennifer Cray	Thomas Guise
Richard & Barbara Czarnota	Victoria Haehl
Roberta Dailey	Ken & Hillary Handwerger
Marjorie Daniels	Keith & Georgette Hansen
Thomas & Nancy Davies	Michael Hayes
Dianne Davis	Bill & Lisa Hayhow
Thomas & Jean Davis	George Collins & Paula Hencken
Jeannine Dawson	Bob & Barbara Hensinger
Michael & Christen Dearing	DeAnn Hervey
David & Kay Deering <i>-In memory of</i>	Web L. & Betty M. Hill
<i>Nancee Sanville</i>	Cali Hobgood Photography
Matthew DeLand	Vicky Hurst
Ron & Dee Dershem	Erich & Ann Marie Jensen
Detroit Metal Works	Steve & Callie Jerant
Ken Dickinson	Reid Johnson
Gene & Barbara Dickirson	John & Linda K. Jonides
John & Linda Dietrich <i>-In memory of</i>	Michael Kadar
<i>Nancee Sanville</i>	Ken & Eileen Kapka
William & Jean Dietrich <i>-In memory</i>	James & Joanna Kastely
<i>of Nancee Sanville</i>	Kennard Family Charitable Fund
<i>*Also, World Premiere Fund benefactor</i>	

(continued)

CAST CIRCLE

Dennis & Ruth Kenny	John & Sally Preston
Larry & Katherine King	David & Marcia Quilter
Anthony & Phoebe Klain	Dick & Linda Radtke
Arnold & Jean Kluge	Laura Raisch
Marci Klumb	Hope Raymond
Allegra Kranz	Jeff & Katie Reece
Adrian Kreger	Joe Reecher
Lawrence Kron	Ed & Mary Reid-Selth
Dr. DiAnn L'Roy	Alice Rhodes
David & Mary Laidlaw	Patrick & Mary Roche
Peter & Susan Lee	Home Box Office
Matt & Jennifer Letscher - <i>In memory of Nancee Sanville</i>	Mark Rosenfeld
Franette Liebow & Jeffrey Goldman	James C. & Laura Rozycki
- <i>In memory of Nancee Sanville</i>	Ruth's Chris Steakhouse
David London	Sandhill Farm Foundation
Gary MacDonald	Marla Sanford
Gerald & Pamela Maloney	Jane Sauchak
Norman Marchetti	Marni Schmid
Larry & Rowena Matthews	Thomas Schmitz
Donald May	Mary Schulze
Janet Maylie - <i>In memory of Nancee Sanville</i>	Dale & Nancy Schumann
Alice McCreary	Dennis Seppanen
Mary & George McGuire	Bruce & Lisa Shapiro
Margot & Tom Mehringer	Patti & Bob Shaw
Linda & Chris Meloche	Matthew Sheehy
Kathleen & Phillip Micheli	Cliff & Ingrid Sheldon
Microsoft	Patrick & Susan Shields
Carol & Bill Middel	Clark & Amy Shuler
Vonetta Mills	Joan & Ron Smith
Alexandra & Matt Moore	Jan & Mark Sockness
Mary Mostaghim	Robert Spaly
Michael Mroczyk & Martha Amis	Stardust Inc.
Roger & Beth Mulder	Donna & Johan Stohl
Ruth Ann Musbach	William & Mary Stuart
Alexander & Carole Nakeff	Tim & Patti Sweeny
David & Jeanne Neuhoﬀ	The Crofoot
Rebecca Nickels	Madeline & Steve Thiry M.D. <i>In memory of Nancee Sanville</i>
Robert & Karen Niedzielski	Jane & Nigel Thompson
Cherie Nixon	Janette & Martin Tobin
Tracy Page	Howard & Denise Treado
John & Frances Parker	Timothy Treado
Lisa Patrell	Bob & Kathy Trudell
Don & Pat Paulsell	Allen D Tucker Jr
Bill & Susan Penner	Tulip Tree Gardens
Lawrence & Nancy Peters	USArtQuest
Pfizer Foundation Matching Gifts Program	Ann Utter
	David & Marion VanLoo
	Joan Voigt
	Judy Ward

*Also, World Premiere Fund benefactor

(continued)

CAST CIRCLE

Ruth A. Watson
Arthur & Sandra Welch
Tracey Wentz & Chuck Blackmer
Lisa Whalen -*In memory of*
Nancee Sanville
John Whitaker
Avis L. White
Lynn & John White
Sandy & Sarah Wiener
Stuart & Nancy Winston

Denise Wirtz
David & Jean Wolski
Ann & David Wood
Sally Wright Smith
Roberta Young
Henry Zelisse
Fred & Miriam Sass Zuidveld
Lois Zurvalec
Susan H. & David S. Zurvalec

CAPITAL SUPPORT

Anonymous
Anonymous Foundation
F. Ross & Laura Jean Birkhill Family
Foundation
Ford Motor Company Fund
The Hamp Family*

Carl Hansen
Shirley J. Herrick*
Kohler Company
Michigan Council for Arts
& Cultural Affairs
Matilda R. Wilson Fund

ENDOWMENT SUPPORT

Anonymous*
Gary Ciarkowski
Thomas D. Davies
Charles & Julia Eisendrath*

The Hamp Family*
Donald Warren &
Lenore Orlowska-Warren



The Purple Rose Theatre Company Productions

1991

*Blush at Nothing**
by Lisa A. Wing
February 7-March 24, 1991

*Shoe Man**
by Jeff Daniels
April 25-July 21, 1991

1991 / 1992

Kuru
by Josh C. Manheimer
September 5-October 27, 1991

*Ties That Bind**
by Kitty Dubin
Nov 14, 1991-January 5, 1992

More Fun Than Bowling
by Steven Dietz
January 23-April 12, 1992

*The Tropical Pickle**
by Jeff Daniels
May 7-August 30, 1992

1992 / 1993

Possessed: The Dracula Musical
Book by Robert Marasco
& Jason Darrow
Music by Carter Cathcart
October 1-December 20, 1992

Necessities
by Velina Hasu Houston
January 14-March 7, 1993

National Anthems
by Dennis McIntyre
April 1-June 5, 1993

*Nooner**
by Kim Carney
June 17-August 29, 1993

1993 / 1994

*The Vast Difference**
by Jeff Daniels
October 7, 1993-January 9, 1994

*Two Sisters**
by T. E. Williams
January 27-March 20, 1994

Keely and Du
by Jane Martin
March 31-May 22, 1994

Stanton's Garage
by Joan Ackermann
June 9-August 28, 1994

1994 / 1995

*Thy Kingdom's Coming**
by Jeff Daniels
October 6-December 23, 1994

*Only Me and You**
by Kim Carney
January 19-March 12, 1995

*Hang the Moon**
by Suzanne Burr
March 31-May 21, 1995

Weekend Comedy
by Jeanne and Sam Bobrick
June 8-August 20, 1995

1995 / 1996

*Escanaba in da Moonlight**
by Jeff Daniels
September 28-December 23, 1995

Beast on the Moon
by Richard Kalinoski
January 18-March 10, 1996

*The Purple Rose
Spring Comedy Festival**
by various playwrights
March 28-May 19, 1996

*The Harmony Codes**
by Michael Grady
June 6-August 25, 1996

1996 / 1997

*Apartment 3A**
by Jeff Daniels
September 26-December 21, 1996

*Labor Day**
by Kim Carney
January 16-March 8, 1997

The Hot L Baltimore
by Lanford Wilson
March 27-May 31, 1997

Off the Map
by Joan Ackermann
June 19-August 23, 1997

1997 / 1998

Escanaba in da Moonlight
by Jeff Daniels
September 18-December 20, 1997

Julie Johnson
by Wendy Hammond
January 22-March 14, 1998

*World Premiere

The Purple Rose Theatre Company Productions

*Book of Days**

by Lanford Wilson
April 2-June 27, 1998

*Marcus is Walking**

by Joan Ackermann
July 16-September 12, 1998

1998 / 1999

*Boom Town**

by Jeff Daniels
October 8-December 19, 1998

*The Hole**

by Wendy Hammond
January 28-March 20, 1999

The Big Slam

by Bill Corbett
April 8-June 12, 1999

Criminal Genius

by George F. Walker
July 1-August 22, 1999

1999 / 2000

The PRTC moved into temporary offices in September 1999 while the building underwent a 16-month renovation project.

2000 / 2001

*Rain Dance**

by Lanford Wilson
January 11-March 17, 2001

*Orphan Train: An American Melodrama**

by Dennis North
April 12-June 16, 2001

*Completing Dahlia**

by Annie Martin
July 12-September 1, 2001

2001 / 2002

Guys on Ice

by James Kaplan & Fred Alley
October 4-December 22, 2001

*Months on End**

by Craig Pospisil
January 17-March 16, 2002

Born Yesterday

by Garson Kanin
April 4-June 15, 2002

*Let It Be**

by Dennis North
July 11-August 31, 2002

2002 / 2003

*Across the Way**

by Jeff Daniels
September 26-December 21, 2002

*Stand**

by Toni Press-Coffman
January 23-March 15, 2003

*Hope for Corky**

by Randall Godwin
April 3-May 31, 2003

Blithe Spirit

by Noel Coward
June 19-August 30, 2003

2003 / 2004

The Good Doctor

by Neil Simon
October 2-December 20, 2003

*Leaving Iowa**

by Tim Clue & Spike Manton
January 22-March 13, 2004

The Underpants

by Carl Sternheim
Adaptation by Steve Martin
April 1-June 5, 2004

*Duck Hunter Shoots Angel**

by Mitch Albom
June 24-September 18, 2004



Guys on Ice

*World Premiere

The Purple Rose Theatre Company Productions

2004 / 2005

The Mystery of Irma Vep
by Charles Ludlam
October 7-December 18, 2004

*Norma & Wanda**
by Jeff Daniels
January 20-March 19, 2005

Bus Stop
by William Inge
April 7-June 4, 2005

*And the Winner Is**
by Mitch Albom
June 23-September 24, 2005

2005 / 2006

The Glass Menagerie
by Tennessee Williams
October 20-December 17, 2005

*Guest Artist**
by Jeff Daniels
January 19-March 18, 2006

*The Late Great Henry Boyle**
by David MacGregor
April 6-June 3, 2006

Honus and Me
by Steven Dietz
based on the novel by Dan Gutman
June 22-September 2, 2006

2006 / 2007

*Escanaba In Love**
by Jeff Daniels
Sept 28, 2006-January 20, 2007

The Subject Was Roses
by Frank D. Gilroy
February 8-March 17, 2007



Escanaba In Love

*When the Lights Come On**
by Brian Letscher
April 5-June 2, 2007

*Sea of Fools**
by Matt Letscher
June 21-September 1, 2007

2007 / 2008

*The Poetry of Pizza**
by Deborah Brevoort
October 4-December 22, 2007

*Vino Veritas**
by David MacGregor
January 17-March 8, 2008

*Growing Pretty**
by Carey Crim
March 27-April 23, 2008

*Panhandle Slim & The Oklahoma Kid**
by Jeff Daniels
June 19-September 27, 2008

2008 / 2009

Apartment 3A
by Jeff Daniels
October 16-December 20, 2008

A Streetcar Named Desire
by Tennessee Williams
January 22-March 21, 2009

*Bleeding Red**
by Michael Brian Ogden
April 9-May 30, 2009

*Wake**
by Carey Crim
June 18-August 22, 2009

2009 / 2010

*Escanaba**
by Jeff Daniels
Sept 17, 2009 - January 23, 2010

*Gravity**
by David MacGregor
February 11-March 27, 2010

Our Town
by Thornton Wilder
April 15-May 29, 2010

Boeing-Boeing
by Marc Camoletti
adapted by Beverley Cross
June 17-September 11, 2010

*World Premiere

The Purple Rose Theatre Company Productions

2010 / 2011

*Best of Friends**
by Jeff Daniels
October 14-December 18, 2010

*Corktown**
by Michael Brian Ogden
January 20-March 5, 2011

*Some Couples May...**
by Carey Crim
March 24-May 28, 2011

*Consider the Oyster**
by David MacGregor
June 16-September 3, 2011

2011 / 2012

Escanaba in da Moonlight
by Jeff Daniels
September 22 - December 31, 2011

A Stone Carver
by William Mastrosimone
January 19 - March 10, 2012

*White Buffalo**
by Don Zolidis
March 29 - June 2, 2012

On Golden Pond
by Ernest Thompson
June 21 - September 1, 2012

2012 / 2013

Superior Donuts
by Tracy Letts
September 20 - December 15, 2012

*The Meaning of Almost Everything**
by Jeff Daniels
January 10 - March 9, 2013

33 Variations
by Moisés Kaufman
March 28 - June 1, 2013

*Miles & Ellie**
by Don Zolidis
June 20 - August 31, 2013

2013 / 2014

The Vast Difference
by Jeff Daniels
September 19 - December 18, 2013

Redwood Curtain
by Lanford Wilson
January 16 - March 15, 2014

*The PRTC Spring Comedy Festival:
Lovers, Liars & Lunatics**
by various playwrights
April 3 - May 24, 2014

The Last Romance
by Joe DiPietro
June 12 - August 30, 2014

2014 / 2015

Annapurna
by Sharr White
September 18 - December 13, 2014

Steel Magnolias
by Robert Harling
January 15 - March 14, 2015

Talley's Folly
by Lanford Wilson
April 2 - May 23, 2015

*2AZ**
by Michael Brian Ogden
June 11 - July 26, 2015



Steel Magnolias

*World Premiere

The Purple Rose Theatre Company Productions

2015 / 2016 (25th Anniversary)

*Casting Session**

by Jeff Daniels

September 17 - December 19, 2015

The Odd Couple

by Neil Simon

January 21 - March 26, 2016

*Gaps in the Fossil Record**

by Matt Letscher

April 14 - May 28, 2016

Morning's At Seven

by Paul Osborn

June 16 - August 27, 2016

2018 / 2019

*Diva Royale**

by Jeff Daniels

September 20 - December 29, 2018

*Never Not Once**

by Carey Crim

January 17 - March 16, 2019

All My Sons

by Arthur Miller

April 4 - June 1, 2019

*Welcome to Paradise**

by Julie Marino

June 20 - August 31, 2019

2016 / 2017

*Morning After Grace**

by Carey Crim

September 29 - December 17, 2016

*Smart Love**

by Brian Letscher

January 19 - March 4, 2017

Vino Veritas

by David MacGregor

March 23 - May 27, 2017

Harvey

by Mary Chase

June 15 - August 26, 2017

2019 / 2020

*Sherlock Holmes and the Adventure of the Fallen Soufflé**

by David MacGregor

September 19 - December 21, 2019

*Roadsigns**

by Jeff Daniels

January 16 - March 14, 2020

*Paint Night**

by Carey Crim

April 2 - May 30, 2020

*A Walk Around the Table**

by Lauren Knox

June 18 - August 29, 2020

2017 / 2018

God of Carnage

by Yasmina Reza

translated by Christopher Hampton

September 28 - December 16, 2017

*FLINT**

by Jeff Daniels

January 18 - March 10, 2018

*Sherlock Holmes and the Adventure of the Elusive Ear**

by David MacGregor

March 29 - May 26, 2018

*Willow Run**

by Jeff Duncan

June 14 - September 1, 2018



*World Premiere

Willow Run

A TRADITION OF
Sustainable Winegrowing



LANGETWINS
FAMILY WINERY AND VINEYARDS

For five generations we have been growing winegrapes in the Lodi appellation. In 2006 we opened a winery with our families to showcase our passion for growing sustainable winegrapes—because great wine starts in the vineyard. Cheers! —Randall and Brad Lange, The Twins

Please look for our estate grown wines in your neighborhood: Sauvignon Blanc, Chardonnay, Moscato, Cabernet, Zinfandel

Lodi, California
LANGETWINS.COM

PATRON INFORMATION

Contact

Address: 137 Park Street
Chelsea, MI 48118
Box Office: 734.433.7673
tickets@purplerosetheatre.org
Administration: 734.433.7782
info@purplerosetheatre.org
Fax: 734.475.0802

Box Office Hours

Monday through Friday:
10:00 AM - 6:00 PM

Performance days:

Wednesday	10:00 AM - 6:00 PM
Thurs & Fri	10:00 AM - 10:00 PM
Saturday	Noon - 10:00 PM
Sunday	Noon - 4:00 PM

Performance Times

Wednesday at 3:00 PM
Thursday & Friday at 8:00 PM
Saturday at 3:00 PM & 8:00 PM
Sunday at 2:00 PM

Visit PurpleRoseTheatre.org for complete schedules and added performance dates.

Tickets

Tickets may be purchased by phone or online at www.PurpleRoseTheatre.org with Visa, MasterCard or American Express.

Full payment is due at time of reservation. Patrons may exchange or cancel tickets up to 24 hours prior to performance without penalty. Web sales fees are nonrefundable.

Group reservations for 12 or more are available at a discount of \$4 per ticket. Tickets must be pre-paid three weeks prior to performance.

Gift Cards

Gift Cards are available in any amount! See the Box Office for more details.

No Smoking Policy

Smoking is not permitted inside the building.

Cameras and Recording Devices

The making of photographs and/or recordings is strictly prohibited inside the theatre.

Electronic Devices

During performances, please turn off or silence cellular phones, watch alarms and other electronic devices.

Accessibility

The PRTC complies with all current ADA Standards. Assisted listening devices and large print programs are available upon request at our Box Office for all performances.

Refreshments

Please do not bring anything to eat or drink into the theatre.

Babes-in-arms

Out of consideration for our patrons and performers, babes-in-arms are not allowed in our theatre during performances.

Complimentary Cough Tablets

These are available at the Box Office. To avoid performance distractions, please unwrap them prior to the performance, at intermission or during the break between scenes.

Please Remain Seated

Actors may be using the aisles for entrances and exits during the show.

Late Seating

Once the performance has begun, seating is at the discretion of the House Manager.

UP NEXT...



PAINT NIGHT

a World Premiere by Carey Crim
directed by Guy Sanville

April 2 - May 30, 2020

Five long-time best friends, in great need of a girls' night out, gather for a bachelorette paint-and-sip night at their local art studio. As the wine and paint flow freely, secrets and long-held tensions come to the surface. Attempting to make contact with their inner artists, they confront buried truths about themselves and their relationships, proving that life, like art, rarely turns out exactly as planned.

**Contains adult language & content.*

Tickets on sale to donors of \$250+ on Feb. 10 and general sales begin Feb. 24.

driving a brighter future

Ford Motor Company Fund



Thanks to you, our community is a stronger, better place.

Ford salutes the Purple Rose Theatre.

www.community.ford.com