

SHERLOCK HOLMES

AND THE
ADVENTURE OF THE
Fallen Soufflé

A WORLD PREMIERE BY
DAVID MACGREGOR

DIRECTED BY
MICHELLE MOUNTAIN



Varsity Lincoln

We Make You

#1

— FIND OUT WHY! —

Certified
Pre-Owned
Lincolns
Save You
Thousands!!



The All-New
2020 LINCOLN AVIATOR

248-305-5300 • Novi/Wixom
VarsityLincoln.com

Delivering One Unforgettable Performance After Another!
Varsity Supports Chelsea & The Purple Rose.

Varsity Ford

800-875-FORD
Ann Arbor

VarsityFord.com

Open Saturdays!



2019 Ford F-150



Get the Best!
Move Up to Varsity!
Over 2,000 vehicles in stock!

“You gotta be a little crazy to make the magic work.”
-Rod Serling

Welcome to the first show of our 29th season!

Our 29th season is entirely made of new plays. Four world premieres. Each one a glorious adventure into the unknown. Each one made from scratch by many of the most talented and dedicated professionals in the country. Each one crafted to thrill, move, delight, and challenge the wide diversity of souls who call the Midwest home.

There is nothing riskier for a theatre company than to produce new work. Many of our colleagues think we're crazy for even trying. Why not make a safer choice and do something people have heard of?

We do that from time to time when we believe we can bring something to the script that might be new and reveal something fresh about the story. We don't do karaoke.

A boat in the harbor is safe. But if it stays there long enough, its bottom will rot out. We choose to go where no one has gone before because it keeps us fresh. It keeps us moving in new directions to explore new methods and forms. And because we believe in these plays, each other, and the people who write them, and what they reveal about what it means to be human.

And because we are just that kind of crazy.

Thank you for taking time out of your lives to spend an evening or afternoon here with us at the Purple Rose. And thank you for getting crazy with us.

A handwritten signature in black ink, reading "Guy Sanville". The signature is fluid and cursive, with the first name "Guy" being more prominent and the last name "Sanville" following in a similar style.

Guy Sanville
Artistic Director

**A Special Thank You to our
2019-2020 Season Underwriters:**

Ford Motor Company Fund

The Hamp Family

The Matilda R. Wilson Fund

The Shubert Foundation

2019-2020 Production Sponsors:

Chelsea Comfort Inn &
Village Conference Center

Chelsea Rhone, LLC

Chelsea State Bank

Neil & Annmarie Hawkins

This production is supported in part by an award from the
MICHIGAN COUNCIL FOR ARTS AND CULTURAL
AFFAIRS and the NATIONAL ENDOWMENT FOR THE ARTS.





JEFF DANIELS
Founder

GUY SANVILLE
Artistic Director

KATIE HUBBARD
Managing Director

with media partners
Michigan Radio
ChelseaMich.com
HOME.fm

presents

SHERLOCK HOLMES
AND THE ADVENTURE OF THE
Fallen Souffle
by David MacGregor

Set Design by
BARTLEY H. BAUER

Costume Design by
SUZANNE YOUNG

Lighting Design by
DANA L. WHITE

Sound Design by
BRAD PHILLIPS

Properties Design by
DANNA SEGREST

Stage Managed by
DEVIN FAUGHT*

Directed by
MICHELLE MOUNTAIN⁺

*member of Actors' Equity Association,
the Union of Professional Actors and Stage Managers in the United States.

+member of the Stage Directors and Choreographers Society,
a national theatrical labor union.

Amateur Mendicant Society
of Detroit



Sharing Sherlockian lore and
whimsy since 1946

www.amateurmendicantsociety.org

Brauer
PRODUCTIONS, INC



"You're right Jeff, they do look like ants"

530 S. Union Street
Traverse City, MI 49684
(231) 941-0850
www.brauer.com



FLINT REPERTORY THEATRE

A Program of the Flint Institute of Music FlintRep.org | 810.237.1530

2019 | 2020 SEASON

**SIGNATURE
SERIES**

THE EFFECT OF
GAMMA RAYS ON
MAN-IN-THE-MOON
MARIGOLDS
Sept. 13-22

THE CHAIRS
Nov. 1-10

INTO THE WOODS
Dec. 6-15

ONE FLEW OVER
THE CUCKOO'S NEST
Mar. 13-22

THE MAGNIFICENT
SEVEN
May 1-10

**THEATRE
FOR
YOUNG
AUDIENCES**

INTO THE WOODS
Dec. 6-15
For ages 13 and up

PACKRAT
Feb. 21-23
For ages 6 and up

**NEW
WORKS
FESTIVAL
2020**

Jan. 17-19

**TICKETS
ON SALE
NOW!**

810.237.7333
FlintRep.org/tickets

CAST OF CHARACTERS

Sherlock Holmes Mark Colson*
Dr. John Watson Paul Stroili*
Irene Adler Sarab Kamoo*
Auguste Escoffier Tom Whalen*
Marie Chartier Caitlin Cavannaugh*
Albert Edward (Bertie) David Bendena*

*member of Actors' Equity Association, the Union of
Professional Actors and Stage Managers in the United States.

PLACE:

The rooms of Sherlock Holmes.

TIME:

June 21, 1897.

PLEASE NOTE

**There will be one 15 minute intermission during
the performance.**

The making of photographs and/or recordings
inside the theatre is strictly prohibited.

Please keep the aisles clear for actors'
entrances and exits.

**WHEN YOUR IMAGE
IS ON STAGE...**

**turn to Foresight Group for
a perfect performance**



**FORESIGHT
GROUP**

Print Solutions That Deliver

734.971.1700

5204 JACKSON ROAD, SUITE 1
ANN ARBOR, MI 48103

www.foresightgroup.net

lower prices throughout
the store . . . that's

**Polly's
Country
Market**

**Total Bottom Line
Savings!**

**1255 M-52
Chelsea MI**

734-433-0130

CHELSEA LUMBER CO.

ENJOYS SUPPORTING
THE POSITIVE GROWTH OF CHELSEA
AND
The Purple Rose Theatre Company



ONE OF THE STATES LARGEST AND MOST MODERN
HOME SUPPLY CENTERS
JUST NORTH OF I-94 ON THE WEST SIDE OF MAIN ST. IN CHELSEA

CAST OF CHARACTERS



DAVID BENDENA (*Albert Edward "Bertie"*) is a proud Resident Artist at The Purple Rose where his prior credits include *All My Sons*, *Willow Run*, *FLINT*, *Harvey*, *Vino Veritas*, *Smart Love*, *The Odd Couple*, *2AZ*, *The Vast Difference* and *33 Variations*. David has appeared at Northville's Tipping Point Theatre and has also worked on various stages in Chicago and Kansas City.



CAITLIN CAVANNAUGH (*Marie Chartier*) is ecstatic and honored to be continuing Marie's story and working with The Purple Rose again after *All My Sons*, *Never Not Once*, *Willow Run*, *Sherlock Holmes and the Adventure of the Elusive Ear* and *Harvey*. Some other favorite credits include *Twelfth Night* (Viola) and *Carousel* (Carrie) with Texas Shakespeare Festival and *Marat/Sade* (Jacques Roux) at the Sabanci International Theatre Festival in Adana, Turkey. She is a proud graduate of Northern Illinois University (BFA Acting) and Moscow Art Theatre School (Certificate in Acting) and is represented by Shirley Hamilton in Chicago. All the love and gratitude for her #1 supporter, her mom, her grandparents, and to Guy, Michelle, Katie, Amy, Devin, Thomas, the apprentices, and every single person in The Purple Rose family for believing in and supporting her. More at www.caitlincavanaugh.webs.com.

FORD
FRIDAYS

The generous underwriting of the **Ford Motor Company Fund** is providing support for two special performances of *Sherlock Holmes and the Adventure of the Fallen Soufflé* with half-priced tickets and post-show talk-backs.

October 18 @ 8pm
December 6 @ 8pm



Merkel
FURNITURE AND CARPET ONE

f t p i
merkelfurniture.com

**Celebrating 94 Years
in Downtown Chelsea!**



Graphics • Designs • Marketing
*A small business
creating big names!*

Celebrating 30 years of business!

Program coordinator for



Interested in advertising
in the Purple Rose Theatre?

Call or Email: Holly @

734-475-4406

hollyrbulko@gmail.com

Stop By Before & After The Show



Daily Luncheon & Dinner Specials

Directly Across The Parking Lot From The Theatre
6 HD TVS

Live Entertainment Friday & Saturday Evenings

Hours: Mon-Sat 11:00 a.m.-midnight
Sunday 12 p.m.-9 p.m.

AMERICAN EXPRESS



113 S. Main • Chelsea • 734-4751922
www.Clearyspubchelsea.com

DISCOVER



CAST OF CHARACTERS



MARK COLSON (*Sherlock Holmes*) is pleased to be back at The Purple Rose for the second Sherlock Holmes production. Mark also played Richard in the world premiere of *Gaps in the Fossil Record*. At Williamston Theatre, Mark has performed in the world premieres of *Pulp* and *The Gravedigger; A Frankenstein Story*. He will be performing in the Spring in *These Mortal Hosts*. Mark will be seen in the upcoming Netflix series *I Am Not Okay With This*. Other TV roles include *Outsiders*, *Banshee* and *Low Winter Sun*, *Madmen*, *Bones*, and *Parks & Recreation*. (See full list on IMDB) Mark created the Theatre2Film Project at MSU where they created four feature films, all premiering at the Traverse City Film Festival. Mark thanks the entire production team and supportive cast at The Rose for nurturing this incredible environment in which to create. Also, as always, a shout-out to Team Colson.



SARAB KAMOO (*Irene Adler*) is so happy to be back with her Sherlock family playing Irene Adler. She is proud to be a Resident Artist at the Purple Rose and was last seen here in *Sherlock Holmes and the Adventure of the Elusive Ear* and *Smart Love*. Other PRTC credits include: *Consider the Oyster*, *And the Winner Is*, *The Underpants* and *Marcus is Walking*. Other theater credits include: *Dancing Lessons* at the Jewish Ensemble Theater; *Falling*, and *Luce* at Meadow Brook Theater; *God of Carnage*, and *Sonia Flew* at The Performance Network; *9 Parts of Desire* (Critic's Choice Award- Between the Lines) with Water Works; *Comedy of Tenors* and *Don't Dress for Dinner* at Tipping Point Theatre; and *Silent Sky*, *Boom* (Best Comedy- Between the Lines 2013) and *Panache* at Williamston Theatre. Film credits include *Teacher*, *Stone*, *Conviction*, *Trust*, *The Giant Mechanical Man*, *Won't Back Down*, *Secrets in the Walls*, *Have a Little Faith*, *Lovestruck* the Musical and episodes of *Detroiters*, *Low Winter Sun* and *Chicago Fire*. In addition to her acting, Sarab is also a part-time school social worker in the Rochester School District. A big thank you to Michelle, Guy, David, Jeff, Devin, Thomas and this wonderful cast and crew. As always, she sends her never-ending love and gratitude to Tom, Grant, Joelle and Julia!

BEST WISHES TO THE
PURPLE ROSE



CHELSEA PHARMACY
FREE DELIVERY
HALLMARK CARDS & GIFTS



Mon-Fri 9 a.m.-7 p.m.
Sat 9 a.m.-5 p.m.

1125 S. MAIN ST. CHELSEA
734-475-1188

B BIGGBY
COFFEE

UPLIFTING
THE PURPLE ROSE
THEATRE

Show this ad



& receive

FREE BOGO

specialty beverage
(hot, iced or frozen)

1171 S Main St • Chelsea

Good at this location only. Not good with
any other offer. Expires: 12/31/2019
CODE 205954

for franchise info www.biggbly.com



JUST AROUND THE CORNER FROM
THE THEATER DISTRICT.



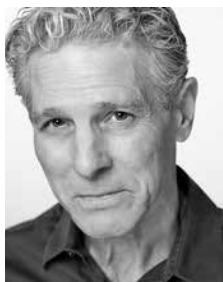
MON CLOSED TUE-THU 11-10 FRI-SAT 11-11 SUN 11-9 SUN Brunch 11-3
112 S Main Street • Downtown Chelsea • commongrill.com • 734.475.0470



CAST OF CHARACTERS



PAUL STROILI (*Dr. John Watson*) is a Resident Artist at The Purple Rose, with roles in *Welcome to Paradise*, *God of Carnage* and *Sherlock Holmes and the Adventure of the Elusive Ear*. TV credits include *Empire*, *Chicago P.D.*, *Getting Personal*, *Malcolm in the Middle* and *The Untouchables*, as well as the films *Wake*, *The Beating*, *Gratitude*, *Only Dance Can Save Us* and *Karaoke Man*. Also a playwright, his plays include *My Dinner with Arlecchino*, *Cheese Louise*, *Plane Crazy* and his autobiographical solo show, *Straight Up with a Twist*, which enjoyed over 1,000 performances nationwide, culminating in a twice-extended Off Broadway run. His most recent play, *A Jukebox for the Algonquin*, will receive its World Premiere here at the Purple Rose in the 2020/21 (30th Anniversary) Season. Paul dedicates tonight's performance to Paul K. Kaiser and John Lelak – "Mostly it is loss which teaches us about the worth of things."- Schopenhauer



TOM WHALEN (*Auguste Escoffier*) was last seen on The Purple Rose stage in this spring's production of *All My Sons*. He is a Purple Rose Resident Artist where he has appeared in *Sherlock Holmes and the Adventure of the Elusive Ear*, *Harvey*, *Morning After Grace*, *Morning's At Seven*, *The Odd Couple*, *Casting Session*, *2AZ*, *The PRTC Spring Comedy Festival: Lovers, Liars, & Lunatics*, *The Vast Difference*, *Our Town*, *Escanaba*, *Panhandle Slim & The Oklahoma Kid*, *Corktown*, *The Glass Menagerie*, *The Good Doctor*, *Let It Be*, *Guys On Ice* and *Orphan Train: An American Melodrama*. Tom has also designed sound for numerous PRTC productions. He has performed locally at the BoarsHead Theatre, Jewish Ensemble Theatre, Meadow Brook Theatre, Hilberry Repertory, The Gem Theatre, The Attic Theatre and Performance Network. His many appearances include *The Cherry Orchard*, *Twelfth Night*, *Moonlight and Magnolias*, *Summer and Smoke* and *Little Shop of Horrors*.



ROBERTS PAINT & BODY

"We meet the nicest people by accident."

Full service body shop specializing in collision repair, auto frame work, and glass repair for all makes and models. Fully licensed and insured facility in Chelsea, Michigan.

610 East Industrial
Chelsea, MI 48118
(734) 475-1149
www.robertspb.com



ROBERTS PAINT & BODY Now Offers Auto Detailing

Call (734) 475-1149 or
email detail@robertspb.com
for details, gift certificates, or
to schedule your next detailing.

610 East Industrial
Chelsea, MI 48118
www.robertspb.com

PLAYWRIGHT



DAVID MACGREGOR (*Playwright*) David is a playwright and screenwriter who was born in Detroit and graduated from Michigan State University. He is proud to be a Resident Artist here at The Purple Rose Theatre, where seven of his plays have been produced. He is currently in the middle of a Sherlock Holmes trilogy, with *Sherlock Holmes and the Adventure of the Fallen Soufflé* being the second installment. The trilogy began here at the Purple Rose with *Sherlock Holmes and the Adventure of the Elusive Ear* (2018), and will reach its shattering climax with *Sherlock Holmes and the Adventure of the Ghost Machine*. His plays have been performed from New York to Tasmania, and his work has been published by Dramatic Publishing, Playscripts, Smith & Kraus, Applause, and Heuer Publishing.

He adapted his dark comedy, *Vino Veritas*, for the silver screen, and it stars Carrie Preston (Emmy-winner for *The Good Wife*). Several of his short plays have also been adapted into films, and his screenplay *In the Land of Fire and Ice* was a 2016 Athena List Winner (best screenplays featuring female protagonists). His street-soccer series, *Shadowplayers*, is currently being produced in Los Angeles, and will air on the Zeus Network. He teaches writing at Wayne State University, is a member of the Amateur Mendicant Society (a Michigan-based organization for fans of Sherlock Holmes), and is inordinately fond of cheese and terriers.

Eternal thanks go to Jeff, Guy, Michelle, the ridiculously talented cast and designers, and everyone else who helped bring this production to life. It is an honor and a privilege to work with all of you.

**SUBSCRIBE
TO eNEWS**

Receive Purple Rose news in your inbox: behind-the-scenes information, invitations to events, exclusive ticket discounts and more.

Visit **PurpleRoseTheatre.org**



*In Chelsea, we remember our past,
enjoy the present, and plan for the future.*

proud of
The Purple Rose and its
110th Successful Production!
www.chelseamichamber.org

222 S. MAIN ST., SUITE B
Chelsea • Michigan 48118
734-475-1145

Beer – Wine – Cocktails



**115 S. Main St.
Rear entrance from the
parking lot**

**Join us for lunch, dinner,
or drinks & dessert after the
show!**

107 & 109 S. Main St. Chelsea, MI 48118

While you're out on the town, we hope you'll stop in!



*A unique blend of
fashion, footwear and accessories*

Featuring

*Red Wing Boots
Desigual Fashions
Brighton*

*Stormy Kromer
Woolrich
Smart Wool Socks*

*Parsley & Sage
Aventura & Ecoths
Scully Leathers*

www.vogelsandfosters.com

734-475-1606



Mon.-Wed. 10-6 • Thur.-Sat. 10-8 • Sun. 12-5

DIRECTOR



MICHELLE MOUNTAIN (*Director*) a Purple Rose Resident Artist since 1998, is delighted to work with these incredible people. Michelle's previous Purple Rose appearances include *All My Sons*, *Never Not Once*, *Willow Run*, *God of Carnage*, *Harvey*, *Morning After Grace*, *Gaps in the Fossil Record*, *The Odd Couple*, *2AZ*, *Steel Magnolias*, *Annapurna*, *The PRTC Spring Comedy Festival: Lovers, Liars, & Lunatics*, *Redwood Curtain*, *Miles and Ellie*, *33 Variations*, *Superior Donuts*, *White Buffalo*, *Some Couples May...*, *Best of Friends*, *Boeing-Boeing*, *Our Town*, *Gravity*, *Wake*, *A Streetcar Named Desire*, *The Poetry of Pizza*, *When the Lights Come On*, *The Subject Was Roses*, *The Glass Menagerie*, *Norma & Wanda*, *Blithe Spirit*, *Across the Way*, *Born Yesterday*, *Orphan Train: An American Melodrama*, *The Hole* (Detroit Free Press Best Actress Award), *Marcus is Walking*, and *Book of Days*. Her Purple Rose directing credits include *Welcome to Paradise*, *Morning's At Seven*, *The Last Romance*, *On Golden Pond*, *Growing Pretty*, and *Hope for Corky*. Thanks to Jeff, Guy, the entire Purple Rose family, Vince, Henry and Julian.



DESIGNERS

BARTLEY H. BAUER (*Scenic Designer*) was given the great honor 28 years ago of working with Jeff Daniels to create a new theatre venue for Michigan playwrights and actors. This is his 35th scenic design for The Purple Rose Theatre Company. Design awards include *Sherlock Holmes and the Adventure of the Elusive Ear*, *Annapurna*, *Thy Kingdom's Coming*, *Stanton's Garage*, *Blithe Spirit*, and *Guest Artist*. He also spent the last thirty-plus years working as a designer for many different theatre groups, most notably Williamston Theatre, Tipping Point Theatre, Michigan State University Wharton Center, Lansing Community College, Civic Theatres, community organizations, area high schools and as a faculty member of Interlochen National Music Camp. Bart works for Chelsea Lumber Company as the kitchen and bath department manager. He is a Chelsea native and lives here with his wife, two sons and a daughter.



BY CHOICE HOTELS

Comfort & Convenience

The Chelsea Comfort Inn is a great place to stay after the show! The Village Conference Center is newly renovated with a talented on-site chef. It is the ideal choice for your next meeting or special event, with seating from 10-250.



Purple Rose Packages

(Advanced booking required)

734-433-8000

1645 Commerce Park Drive, Chelsea, MI 48118
www.comfortinnchelsea.com

Reinhart

REALTORS

Supporting the Local Arts Community

734-747-7888

www.ReinhartRealtors.com

*The Real estate leader in
Ann Arbor for over 49 years.*

You'll do
whatever it takes
to help her
succeed.

Make sure
that includes your
Estate Plan.

Curtis Curtis & Brelinski, P.C.
ATTORNEYS | EST. 1901

Attorneys and Advisors to Businesses and Individuals

Estate Planning is more than a will. It helps individuals and families prepare for their personal, medical, family, and financial affairs in the event of death, serious illness, or disability. Proper planning can help you and your family plan for a number of real-life issues.

Curtis, Curtis & Brelinski is a long-time supporter of Purple Rose Theatre.

curtiscurtislaw.com | 517.787-9481

DESIGNERS

BRAD PHILLIPS (*Sound Designer*) is a professional musician by trade, most known on The Purple Rose stage from his many appearances with Jeff Daniels' *Onstage & Unplugged*. A violinist, fiddler, mandolinist, guitarist, and vocalist, Brad serves as a Resident Artist at PRTC and has provided musical elements for *All My Sons*, *The Last Romance*, *Annapurna*, *2AZ*, *Steel Magnolias*, *Talley's Folly*, *Gaps in the Fossil Record*, *FLINT*, and was the sound designer for *Morning's At Seven*, *Harvey* and *Sherlock Holmes and the Adventure of the Elusive Ear*. Brad also served as co-musical director, co-composer and played The Pilot in the PRTC production of *Willow Run*. As a performing musician, Brad has appeared with Stevie Wonder, Aretha Franklin, Iggy Pop, Pat Metheny, The Verve Pipe, Joshua Davis from NBC's "The Voice", May Erlewine, and many others. In 2014, he served as producer for Jeff Daniels' studio recording "Days Like These" and the 2016 collaboration with Brian Vander Ark called "Simple Truths". Brad holds a bachelor's degree in Jazz Studies, as well as a master's in Improvisation, both from the University of Michigan School of Music, Theatre & Dance.

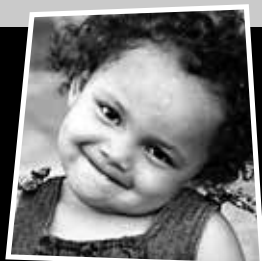
DANNA SEGREST (*Properties Designer*) has enjoyed the PRTC family since volunteering as backstage dresser for our first production, *Blush at Nothing*. She became an Equity Stage Manager for *Shoe Man* by Jeff Daniels in 1991 and stage managed many shows while training some of the PRTC's first apprentices. Danna now wears many hats as Resident Properties Designer, a Resident Artist, Archival Photographer and Box Office Assistant. Danna has designed props for almost all of the PRTC's shows. She is especially happy to help the wonderfully talented Bartley Bauer with set dressings on this production. Danna is grateful for this opportunity to design the props once again for a David MacGregor show. His talent and vision for the exotic prop shows continues to amaze, through *The Late Great Henry Boyle*, *Consider the Oyster*, *Gravity*, *Vino Veritas*... All such fun! And now we have 3 Sherlocks to look forward to. Thanks to Wade and Reeve for being my jewels. You are wonderful!

ADVANCE
TICKETS

DID YOU KNOW?

Annual Purple Rose donors of \$250 or more may purchase tickets two weeks before the general public.

Give ^{Where}
You Live



HELP US HELP KIDS

Kiwanis
Thrift Sale

734-665-0450 a2kiwanis.org

Friday & Saturday 9am-1pm
100 N. Staebler Rd. off W. Jackson Rd.
Official Sponsor of Warm the Children

The Find

*Upscale Family Resale
Downtown Chelsea*

136 W Middle St.
Chelsea, MI 48118
Ph: (734) 593-7044

Tue-Sat 10-4pm
Sunday 12-4pm
or by appointment
for Purple Rose Patrons

Valiant

BAR & GRILL

Mediterranean, American, Tex-Mex, Pizza, Pasta

Happy Hour from 3:00pm-6:00pm Monday-Friday
Half off Appetizers, \$5 House Wine, \$4 Well Drinks,
\$2 off Featured Drinks & Cocktails, and \$1 off all Beer

Karaoke every Saturday from 10:30pm-1:00am

734-475-7714

1120 S. Main St., Chelsea, MI 48118
Located in the Chelsea Shopping Center,
next to Family Farm and Home

Hours:

M-Th: 11:00am-11:00pm
Friday: 11:00am-12:00am
Saturday: 11:00am-1:00am
Sunday: 12:00pm-10:00pm

DESIGNERS

DANA L. WHITE (*Lighting Designer*) is a Resident Artist at The Purple Rose Theatre Company. His longtime association with the Purple Rose (since 1991) includes: *All My Sons*, *Diva Royale*, *FLINT*, *God of Carnage*, *Vino Veritas* 2017 revival, *Smart Love*, *Morning After Grace*, *Casting Session*, *Talley's Folly*, *Steel Magnolias*, *Annapurna*, *The PRTC Spring Comedy Festival: Lovers, Liars, & Lunatics*, *The Vast Difference*, *33 Variations*, *Gravity*, *Escanaba*, *A Streetcar Named Desire*, *Vino Veritas*, *Rain Dance*, *Book of Days*, *Guest Artist*, *Leaving Iowa* and the World Premiere production of *Apartment 3A*. He also lit *Norma & Wanda*, *Escanaba in da Moonlight* and *The Tropical Pickle* at The Gem Theatre in Detroit. His regional credits include work for The Contemporary American Theatre Festival (CATF), and The Contemporary American Theatre Company (CATCO). Dana is a member of United Scenic Artists Local 829 and an emeritus professor at Otterbein College; he is also a proud father and grandfather and a very lucky husband.

SUZANNE YOUNG (*Costume Designer*) debuted at The Purple Rose with *Escanaba in da Moonlight* in 2011 and is delighted to return for *Sherlock Holmes and the Adventure of the Fallen Soufflé*. She also designed *Welcome to Paradise*, *All My Sons*, *Willow Run*, *Sherlock Holmes and the Adventure of the Elusive Ear*, *33 Variations*, *The Spring Comedy Festival: Lovers, Liars, & Lunatics*, *Annapurna*, *Morning's At Seven*, and *Harvey* for The Purple Rose. Other recent credits include *Taming of the Shrew* and *Richard II* for the Michigan Shakespeare Festival, the 2019 Dance Concert, *Sweet Charity*, *One Hit Wonder* and *Dead Man Walking* for The University of Michigan as well as *A Comedy of Tenors*, *Boeing-Boeing* and *Don't Dress For Dinner*, among others for The Tipping Point Theatre. She has been a Wilde Award nominee multiple times and winner of Best Costume Design for MSF's *The Importance of Being Ernest* in 2014. She has designed numerous other productions for local theatre, and her work has been seen internationally in the UK and Europe. Suzanne trained in London, England and has enjoyed a long and varied career in costumes and costume design. She would like to thank Guy and the wonderful people at The Purple Rose for all their support and hard work and, of course, her husband and family.





A2CT's 90th SEASON!

Urinetown, The Musical
September 12-15, 2019

My Three Angels
October 24-27, 2019

The Fantasticks
January 9-12, 2020

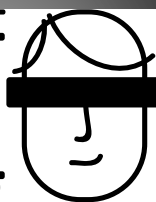
Jeeves Intervenes
March 12-15, 2020

Godspell (2012)
April 23-26, 2020

Matilda, The Musical
June 4-7, 2020

Tickets and Information at
www.a2ct.org | 734.971.2228

SECRET
CRISIS
COMICS



Secret Crisis Comics
1161 S Main Street
Chelsea, MI 48118
734.593.7110

@TheSecretCrisis

@TheSecretCrisis

The Nutcracker

DECEMBER

7-8 & 14-15, 2019

TICKETS ON SALE **NOVEMBER 1**

— A COLLABORATIVE PRODUCTION —



EXPERIENCE THE MAGIC

balletchelsea.org

jacksonsymphony.org



STAGE MANAGEMENT

DEVIN FAUGHT (*Stage Manager*) This is Devin's third season on the stage management team here at The Purple Rose. Devin is a Resident Artist here as well as a graduate from The Purple Rose Theatre Company's apprentice program. Thank you Guy, Michelle, Thomas, and Angie for your mentorship. Thank you Katie, Amy, Aubrey, and Abby for your tireless efforts. Thank you, Megan, Kate, and Romina. And thank you, Jeff, for this artistic home.

THOMAS MACIAS (*Assistant Stage Manager*) is a graduate of RIT (2013) in Rochester, NY, the Purple Rose apprentice program (2014), and the Pointless School of Improv (2017) in Ann Arbor. A Resident Artist at The Purple Rose, he starred across Jeff Daniels in the film version of *Guest Artist*, premiering in Ann Arbor on November 29th (contact: aubrey@purplerosetheatre.org). Many thanks to Devin, Angie, Guy, Michelle, Jeff, and his fiancée, Beth. Twitter: @MrThomasMacias

while you're in town...
experience something

Chelsea

www.chelseamich.com

Use your phone to view our
community calendar & directory
for dining, shopping, attractions,
fun in the outdoors, lodging & more!

MIDLAND
CENTER
FOR THE
ARTS

CENTER STAGE THEATRE

PICASSO
AT THE
JAN 10-19
/ 2020

A GENTLEMAN'S
GUIDE TO LOVE
& MURDER
MAY 8-17
/ 2020

midlandcenter.org
989.631.8250

AUGUST
FEB 15-23
/ 2020

Join us for great Community Theatre in Midland! Enjoy our subscriber rate on the 2019/20 Season by using promo code PURPLE.

EXP / OCT 1, 2019 Certain exclusions may apply. Subject to availability. Not valid on previously purchased tickets.



*The perfect ending to a romantic night
on the town or your next getaway!*



Chelsea House Victorian Inn, the
only lodging in downtown Chelsea
blends Victorian Charm with
modern essentials:

Premium Room Amenities, Private Baths,
Hot Breakfast, WIFI, Cable, AC
Innkeeper can arrange: Purple Rose Theatre
Tickets, Dinner at The Common Grill &
activities to compliment your stay



www.chelseahouseinn.com

118 East Middle Street, Chelsea, MI 48119

Make reservations online or call 734-475-2244

FOUNDER

JEFF DANIELS has premiered eighteen full-length plays at the PRTC: *Shoe Man*, *The Tropical Pickle*, *The Vast Difference*, *Thy Kingdom's Coming*, *Escanaba in da Moonlight*, *Apartment 3A*, *Boom Town*, *Across the Way* (2002 American Theatre Critics Association Best New Play Finalist), *Norma & Wanda*, *Guest Artist* (2006 ATCA Runner-Up), *Escanaba In Love*, *Panhandle Slim & The Oklahoma Kid*, *Escanaba*, *Best of Friends*, *The Meaning of Almost Everything* (2013 ATCA Nominee), *Casting Session*, *FLINT*, and *Diva Royale*. He is currently performing the role of Atticus Finch in Aaron Sorkin's Broadway adaptation of Harper Lee's *To Kill A Mockingbird*.

ARTISTIC DIRECTOR

GUY SANVILLE is a professional actor, director, writer, and teacher. He celebrated his 24th anniversary as Artistic Director in May 2019. He has directed over 50 plays for the PRTC, including over 40 world premieres. In addition, he teaches workshops and lectures at the Purple Rose and around the country. He is a proud member of Actors' Equity Association, SAG/AFTRA, and the Stage Directors and Choreographers Society.

MANAGING DIRECTOR

KATIE HUBBARD is so pleased to be managing the business of The Purple Rose for the last 6 years. She previously lived in Milwaukee, WI and was the General Manager of First Stage, a professional children's theater that also houses the largest theater training program of its kind in the nation, as well as being Wisconsin's leader in arts-in-education programming. Katie hails from Rochester, Michigan and received her Bachelor of Arts in Theater from Albion College in 2002. She is also a graduate of the Purple Rose Apprentice Program. Katie is a proud member of the Actors' Equity Association and received her union card back in 2003 while stage managing at The Purple Rose. She could not have this dream job without the love and support of her husband and children.



**Breakaway where the Food and Service is Great
and the Fun never ends !**

Sports, Food, Drinks and Fun • Everyday Specials •

We offer Elegant banquet rooms for special events!

Open daily AT 10.00 A.M.

501 Coliseum Drive, Chelsea, MI 48118

(behind Chelsea Lumber upstairs at the arctic coliseum)

734-475-9999

Web site: breakaway.arcticcoliseum.net

**Present this program, Purple Rose ticket or ticket stub,
buy one entree get the 2nd entrée of equal or lesser value half off!**



**Chelsea Cleaners
& Shirt Laundry**

**DRY CLEANING • LEATHER • DRAPES
FEATHER PILLOW CLEANING
WEDDING GOWNS • ALTERATIONS**

**113 Park • Chelsea
Just East of Main**

475-9169

**Village Cleaners
10940 S M-52 • Manchester**

428-9630

PRODUCTION STAFF

Assistant Stage Manager	Thomas Macias*
1st Assistant Stage Manager	Kate Voigt
2nd Assistant Stage Manager	Romina Ramirez
Technical Director & Master Electrician	Gary Ciarkowski
Scenic Painter	Bartley H. Bauer
Scene Shop Assistants	Peter James Florian
.	Jessica Klimushyn
Assistant to the Prop Designer	Anna Jayne Szabo
Assistant to the Master Electrician.	Amanda Buchalter
Assistant to the Sound Designer	Lindsey Briggs
Backstage Crew	Kate Voigt
Crew Back-up	Romina Ramirez
Light Board Operator	Amanda Buchalter
Sound Board Operator.	Lindsey Briggs
House Manager	Anna Jayne Szabo
Production Box Office	Peter James Florian
.	Jessica Klimushyn
Fight Choreographer	Christina Traister
Draper for Irene	Leslie Ann Smith
Draper for Watson	Justin Collings
Crafts and Millinery	Elizabeth Gunderson
Costume Construction	Tj Williamson
Social Media Intern	Thomas Macias
Public Relations Intern	Devin Faught
Marketing Analyst.	Michael Lopetrone
Administrative Assistant to the Artistic Director.	Rose Sanville
Production Photographer.	Sean Carter
Archival Photographer	Danna Segrest
Videographer	Robert W. Hubbard
Program Advertising Coordinator	Holly Bulko
Production Graphic Design	Daryl L. Fazio

*member of Actors' Equity Association, the Union of
Professional Actors and Stage Managers in the United States.

ACKNOWLEDGMENTS*

Chelsea Antiques
Chelsea Area Garden Club
Chelsea District Library
Chelsea House Victorian Inn
LaJolla Fine Jewelry

The New Leaf Landscaping Company
Ralph's Gun Shop
George Till
Waterloo Upholstery
Wesley's Catering

*Please see program insert for additional acknowledgments.

Great Public Radio... Wherever You Go!



Introducing the all new Michigan Radio app - your favorite NPR shows and the latest Michigan news...at your fingertips. Listen on demand to features like *The Environment Report*, explore our program schedule, and share favorite stories with your friends. And it's free!



Your NPR News Station **npr**

Download at



ADMINISTRATIVE STAFF & ARTISTS

Founder	Jeff Daniels
Artistic Director	Guy Sanville
Managing Director	Katie Hubbard
Development Director	Aubrey Martinson
Company Manager	Amy Klain
Technical Director & Master Electrician	Gary Ciarkowski
Apprentice Chief & Literary Manager	Michelle Mountain
Director of Educational Programming	Michelle Mountain
Office Manager	Abby Rudnicki
Group Sales & Box Office Manager	Julia Garlotte
Campaign Consultant	Margarite Fourcroy
Development Assistant	Patricia Stankey
Box Office Assistants	Cyndi Bertsos • Erin Feiner • Jack Meloche Rose Sanville • Danna Segrest • Megan Wesner
Apprentices	Lindsey Briggs • Amanda Buchalter Peter James Florian • Jessica Klimushyn Romina Ramirez • Anna Jayne Szabo • Kate Voigt
Acting Instructors	Caitlin Cavannaugh • Carey Crim • Jeff Daniels Angie Kane • Lauren Knox • Thomas Macias Michelle Mountain • Rhiannon Ragland • Guy Sanville
Playmakers Playwrights	Carey Crim • Jeff Daniels • Jeff Duncan Cloe Mavis Gifford • Matthew Gwynn • Lauren Knox Brian Letscher • Matt Letscher • David MacGregor Julie Marino • Robert Milne • Megan Pinto • Lanford Wilson
Resident Properties Designer	Danna Segrest
Resident Artists	Bartley H. Bauer • David Bendena • Jon Bennett Dan Bilich • Ryan Black • Will Bryson • Caitlin Cavannaugh Gary Ciarkowski • Mark Colson • Susan Craves • Carey Crim Jeff Daniels • David Daoust • Rainbow Dickerson • K. Edmonds Devin Faught • Angie Kane Ferrante • Casaundra Freeman Katie Hubbard • Reid G. Johnson • Sarab Kamoo • Amy Klain Lauren Knox • Jeremy Kucharek • Brian Letscher • Matt Letscher Alex Leydenfrost • David MacGregor • Thomas Macias Randolph Mantooth • Janet Maylie • Richard McWilliams Rusty Mewha • Angela Kay Miller • David Montee Michelle Mountain • Vincent Mountain • Shelby Newport Aphrodite Nikolovski • Wayne David Parker Sarah Pearline • Brad Phillips • Jim Porterfield Rhiannon Ragland • Dawn Rivard • Guy Sanville • Vanessa Sawson Danna Segrest • Kristin Shields • Noele Stollmack • Paul Stroili Kate Thomsen • Lynch R. Travis • Meghan VanArsdalen Tom Whalen • Dana L. White • Suzanne Young • Will David Young
Associate Artists	Julia Garlotte • Matthew Gwynn George Till • Adair Whalen
Accounting Services	Sinelli & Associates

An event to benefit



the
PurpleRose
theatre company

"WE'VE ANNOUNCED IT TO THE WORLD."



"I HOPE YOU HAVE ENOUGH SEATS."

Save the Date! Friday, November 29, 2019

Join us for the
Michigan Premiere of

Guest Artist

Written by and Starring
Jeff Daniels

Directed by
Timothy Busfield

Featuring Resident Artists of



the
PurpleRose
theatre company

The Michigan Theater, Ann Arbor



For information, contact aubrey@purplerosetheatre.org



JOIN THE CONVERSATION



find us on Facebook!
www.facebook.com/PurpleRoseTheatre



follow us on Twitter!
www.twitter.com/PurpleRoseTheat



watch us on YouTube!
www.youtube.com/user/PurpleRoseTheatreCo



sean carter photography

seniors.scarterphoto.com



Now booking Class of 2021 Seniors!



SILVER MAPLES *of Chelsea*

RETIREMENT NEIGHBORHOOD

The Arts:

BALANCED MIND, BODY &
SOUL IS POSITIVE AGING.

VISIT silvermaples.org/arts-and-healthy-aging

Call today for a tour ► **734.475.4111**

Locally-Owned, Non-Profit Jointly Sponsored by 5 Healthy Towns Foundation and United Methodist Retirement Communities, Inc.



LA JOLLA
FINE JEWELRY



111 SOUTH MAIN ST. • CHELSEA, MI 48118 • 734-475-0717

"JIFFY" *mixes*

CHELSEA MILLING COMPANY



Proud to support
The Purple Rose Theatre
and the Community!

Tours available by appointment
734-475-1361

www.jiffymix.com

take a bow

We're proud and happy to support the Purple Rose
Theatre Company. Thank you for performing a leading role
in our community.



Member
FDIC

chelseastate.bank





BOARD OF DIRECTORS

Jeff Daniels - Ex Officio
 Steven K. Hamp - Board Co-Chairman
 Sheila Ford Hamp - Board Co-Chairman
 Peter Feeney - Vice Chairman
 David Ligotti - Treasurer
 Craig Common - Secretary

Peter Brown Maria Leonhauser
 Charles Craves John Mann
 Philip J. Curtis George Moses
 Charles Eisendrath John J. H. Schwarz, M.D.
 David Larsen

PAST BOARD MEMBERS

*Gail Bauer, *David A. Brandon, *Jeff Daniels,
 *Richard Helppie, *William B. Holmes, Judy Dow Alexander,
 Betty Jean Awrey, Paul Boylan, Anne Colone, John Colone, Jill Corr,
Honorary Melissa Sage Fadim, Ann Feeney, Patrick Freydl,
 Ruth Roby Glancy, Doug Graham, H. Ron Griffith, Sanjay Gupta, M.D.,
 Neil Hawkins, Peter Heydon, Atanas Ilitch, Marcia J. MacCready,
 Paul Martino, William Michels, Timothy L. Nasso, Michael Novak*,
 JoAnne Rosenfeld*, Ben Upton, Ambassador Ron Weiser,
 Dawn Williams, Dr. Steve Yarows

**designates past Board Chairpersons*

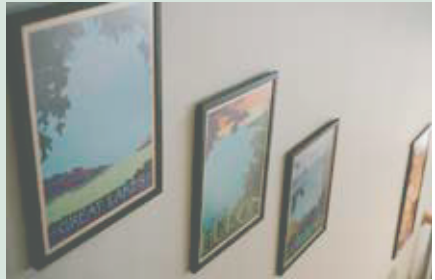
+deceased



BUMBLE'S DRY GOODS

bumblesdrygoods.com

734-433-9703 | 120 S Main St, Chelsea, MI



**Don't your clients deserve
something impressive...
and delicious this holiday?**



MRS. MASON'S CO.
handmade premium brittles
& brittle bonbons

custom packaging
ship within 48 hours



"Best Candy Shop"
&
"Best Chocolate
Shop/Chocolatier"



PROMO CODE: PRTC
for 10% discount

619 S Washington Ave, Royal Oak, MI 48067

www.mrsmasons.com t: 248-660-0675 e: info@mrsmasons.com

Volunteers Needed

As a nonprofit, we rely on the generosity of others to help us carry out our efforts.

Ushering:

The Purple Rose welcomes volunteer ushers throughout the season. This is a wonderful way to help and see a show for free!

Call (734) 433-7673

or email Tickets@PurpleRoseTheatre.org to secure your date.

Event Volunteers:

Recruiting now for our 2020 Event Committee!

We welcome anyone with varying time commitments to join our Development/Event volunteer team. Please contact our

Office Manager, Abby Rudnicki, at

Abby@PurpleRoseTheatre.org or (734) 433-7782.

JOIN THE CONVERSATION



find us on Instagram!
[purplerosetheatre](https://www.instagram.com/purplerosetheatre)



find us on LinkedIn!
www.linkedin.com/company/purple-rose-theatre-company



find us on Pinterest!
www.pinterest.com/purplerosetheat/



"Wesley's Catering is proud to work with Purple Rose Theatre on events like the 25th Anniversary Celebration and the Rustic Rose Summer Benefit. I look forward to creating something fresh and innovative for you."

— Chef Todd Brown

www.WesleysCatering.com
(734) 646-0858

A MESSAGE FROM THE BOARD OF DIRECTORS

From the beginning, The Purple Rose Theatre Company has aspired to be the beacon of American theatre. Founded in 1991 by Jeff Daniels, our mission has been to develop opportunities for theatre professionals while entertaining, enriching and building a loyal following. Audience commitment to the company has resulted in a fiscally solvent and highly respected arts and community partnership.

The PRTC envisions an even brighter future with increased national visibility and enriched economic and artistic health. Well-established and critically acclaimed, The Purple Rose Theatre Company will continue to be the home of world-class, original American theatre.



The Director is a member of the
**STAGE DIRECTORS AND CHOREOGRAPHERS
SOCIETY**, a national theatrical labor union.

The Purple Rose Theatre Company is a member of the Ann Arbor/Ypsilanti Regional Chamber, Arts Alliance, Greater Brighton Area Chamber of Commerce, Chelsea Area Chamber of Commerce, Culture Source, Dexter Area Chamber of Commerce, Greater Jackson Chamber of Commerce, and Saline Area Chamber of Commerce.

Actors' Equity Association (AEA) was founded in 1913 as the first of the American actor unions. Equity's mission is to advance, promote and foster the art of live theatre as an essential component of our society. Today, Equity represents more than 40,000 actors, singers, dancers and stage managers working in hundreds of theatres across the United States. Equity members are dedicated to working in the theatre as a profession, upholding the highest artistic standards. Equity negotiates wages and working conditions and provides a wide range of benefits including health and pension plans for its members. Through its agreement with Equity, this theatre has committed to the fair treatment of the actors and stage managers employed in this production.

AEA is a member of the AFL-CIO and is affiliated with FIA, an international organization of performing arts unions. For more information, visit www.actorsequity.org.

ADVERTISE IN OUR PLAYBILL



Please contact Holly Bulko to
reserve ad space in our
2019-2020 playbills
at hollyrbulko@gmail.com.

**Ad deadline for our winter production,
“Roadsigns” by Jeff Daniels, is Dec. 19, 2019.**

size	3 show rate	2 show rate	single show
inside covers (4.5" x 7.5")	\$4200 (\$1400 per ad)	\$3000 (\$1500 per ad)	\$1525
full (4.5" x 7.5")	\$1950 (\$650 per ad)	\$1350 (\$675 per ad)	\$700
half (4.5" x 3.625")	\$1125 (\$375 per ad)	\$800 (\$400 per ad)	\$425
quarter (2.125" x 3.625")	\$675 (\$225 per ad)	\$475 (\$237.50 per ad)	\$250

APPRENTICE PROGRAM

Patterned after the program Jeff Daniels experienced at the Circle Repertory Company, our apprentice program gives young artists an opportunity to work and learn in a professional theatre setting.

2019/2020 APPRENTICE CLASS



LINDSEY
BRIGGS
Grand Blanc, MI
BFA in Theatre
Performance
University of
Michigan-Flint



AMANDA
BUCHALTER
Canton, MI
BS in
Communication,
BS in Theatre Arts
Eastern Michigan
University



PETER JAMES
FLORIAN
Kalamazoo, MI
BFA in Acting
Michigan State
University



JESSICA
KLIMUSHYN
Royal Oak, MI
BFA in Acting,
Minor in General
Business
Western Michigan
University



ROMINA RAMIREZ
Sterling Heights, MI
BA in Theatre
Wayne State
University



ANNA JAYNE
SZABO
Romeo, MI
AA in Theatre
Lansing
Community
College



KATE VOIGT
Bloomfield
Township, MI
BA in Theatre,
Minor in Creative
Writing
Denison University

Information and applications available at purplerosetheatre.org.

2019 RUSTIC ROSE THANK YOU



Thank you to our generous 2019 Rustic Rose fundraiser sponsors and everyone who attended and contributed to our event!

DTE
Foundation



Chelsea Rhone LLC

CHEMICAL
BANK

SHINOLA
DETROIT



Encompass
Financial Partners

ASSETMARK

MCLAREN WEALTH
STRATEGIES

CSB
CHELSEA
STATE BANK

Maria Kelly & Peter Largen

Antoinette Pilzner & Daniel Moons

Amer1can
CREDIT UNION



FORESIGHT
GROUP
Print Solutions That Deliver



OUTLIERS LLC

RICK TAYLOR
REAL ESTATE

Reinhart
REALTORS

A.R. | Brouwer
COMPANY

JEFF KLINK | Reinhart
& ASSOCIATES REALTORS



LANGETWINNS
FAMILY WINERY AND VINEYARDS



Russell
VIDEO
Script to Screen

Vintage Barn Boutique
CHELSEA, MICHIGAN



THRIVENT
FINANCIAL
Connection faith & finances for good™

Village
CONFERENCE
CENTER



SPOTLIGHT ON DEVELOPMENT

The Purple Rose Gang

The Purple Rose Gang is our multi-year giving club at the PRTC. This special “Gang” is comprised of donors who have made a minimum three-year pledge, at the \$10,000 a year level to the theatre.

The “Gang” will be recognized with a special plaque on the wall of the theatre lobby, a commemorative pin, and acknowledgements in our play production programs and website. Ongoing initiatives will continue to be put in place to properly recognize the individuals committed to this special giving program at The Purple Rose.

Members of The Purple Rose Gang to date are:

David A. Brandon Foundation
Peter Brown & Maria Leonhauser
Craig & Donna Common
Phil & Kim Curtis
The Feeney Family
The Hamp Family
Annmarie & Neil Hawkins
Richard & Leslie Helppie
William B. Holmes Family
Tom & Debby McMullen
Peter & Carol Walters
Ron & Eileen Weiser
Jeff & Dawn Williams

Members of the “Gang” as of August 22, 2019

For more information on how you can become a member of The Purple Rose Gang, please contact Development Director, Aubrey Martinson, at 734.433.7782 ext. 29.

The PRTC is a 501(c)(3) federally tax-exempt, Michigan non-profit organization. Your donations are tax deductible to the maximum allowed by law.



Tecumseh Center for the Arts
Shirley Todd Herrick Theater

2019 - 2020 TOURING SEASON

Visit our website to see our full lineup of events!



JOHN LATINI | Nov. 2 | 7:30 pm | \$23-25

Award-winning musician and two-time Detroit Blues Champ, John Latini personifies the best that Michigan's rock history has to offer: an honest, no-nonsense commitment to real songs about real people.

LEGENDS OF MI COMEDY | Jan. 25 | 7:30 pm | \$25-30

TCA is hosting legendary comedians Dave Landau (Last Comic Standing), Bryan McCree (MADtv), Bill Bushart (Detroit Comedian of the Year), Norm Stulz (Comedy Central) & Steve Smargon (Bi-polar Marine)!



NY, NY DUELING PIANOS | Feb. 15 | 7:30 pm | \$25-40

Drew and Kin are back! This comedy-based dueling piano show is always a fun, high-energy party-in-a-box! Pianists sing and play everything from Jimmy Buffet, Billy Joel, and Tom Petty, to Lady Gaga, Elvis, and Katy Perry.

LE CIRQUE ESPRIT | March 7 | 4:00 pm | \$25-30

Featuring New York City's renowned ABCirque and live orchestrations by the contemporary group CORDIS, Le Cirque Esprit presents its latest creation, "Spirit of the Machine." Based on the Greek mythological tale of Talos.



PHASE 5 | April 25 | 7:30 pm | \$23-25

Phase 5 brings their authentic recreation of Motown's greatest hits to the TCA stage. One of the most electrifying acts to come out of Detroit, Phase 5's smooth jazz mixed with Hip Hop and R&B will leave you wanting more.

400 N. Maumee St. Tecumseh, MI | 517.423.6617 | www.TheTCA.org



A
GENTLEMAN'S
GUIDE
TO
LOVE & MURDER

DIO

AUGUST 22ND - OCTOBER 6TH

WWW.DIOTHEATRE.COM (517) 672-6009

THE **PURPLE ROSE** THEATRE COMPANY

SEASON UNDERWRITERS & PRODUCTION SPONSORS



Sponsoring a Purple Rose production is making a personal investment in American theatre and in a community we all share.

Sponsor benefits are offered at varying levels of support and appeal to a wide range of interests. Depending on your sponsorship level, exclusive benefits may include priority seating, complimentary and discounted tickets, recognition in publications, invitations to new play readings, rehearsals, and opening night parties, VIP event tickets, complimentary signed scripts, private backstage tours and more.

We want you to have the very best sponsorship experience possible; we will work closely with you to customize benefits which respond to your specific interests and that best meet your needs.

For more complete season underwriting, production sponsorship, and donor benefit information, please contact Development Director, Aubrey Martinson, at 734.433.7782 ext. 29 or via email at Aubrey@purplerosetheatre.org.

The Purple Rose Theatre Company is a 501(c)(3) federally tax-exempt, Michigan non-profit organization. Your donations are tax deductible to the maximum allowed by law.

2019-2020 Season Underwriters:

Ford Motor Company Fund
The Hamp Family
The Matilda R. Wilson Fund
The Shubert Foundation

2019-2020 Production Sponsors:

Chelsea Comfort Inn & Village Conference Center
Chelsea Rhone, LLC
Chelsea State Bank
Neil & Annmarie Hawkins
Michigan Council for Arts & Cultural Affairs
National Endowment for the Arts



INVENTION & REINVENTION

2019
2020

DR. FOX AND THE IMPOSSIBLE CURE FOR DEATH

Book & Music by Benedict Braxton-Smith
Book & Lyrics by Megan Petersen
SEPTEMBER 21 - 22, 2019

FRANKENSTEIN

Adapted by Quinn Mattfield
OCTOBER 11 - 20, 2019

TWELFTH NIGHT

By William Shakespeare
NOVEMBER 8 - 17, 2019

FRESHMAN SHOWCASE

The Power of Spontaneous Invention
DECEMBER 5 - 8, 2019

INTO THE WOODS

Music & Lyrics by Stephen Sondheim
Book by James Lapine
FEBRUARY 14 - 23, 2020

BONNETS: HOW LADIES OF GOOD BREEDING ARE INDUCED TO MURDER

By Jen Silverman
MARCH 13 - 22, 2020

MARIAN, OR THE TRUE TALE OF ROBIN HOOD

By Adam Szymikowicz
APRIL 10 - 19, 2020

MSU DEPARTMENT OF THEATRE

THEATRE.MSU.EDU
WHARTONCENTER.COM OR 1-800-WHARTON

OUR 2019-2020 SEASON

40 years of building imaginations...

Strega Nona and the Magic Pasta Pot

October 24 - 26*

A Christmas Carol

December 5 - 8

Frog and Toad

January 23 - 25*

Under the

African Sky

February 20 - 22

Coding to the Moon: Margaret Hamilton & the Apollo Missions

(WORLD PREMIERE)
March 4 - 7

The Tale of the Mischiefous Bunny

March 25 - 28*

Treasure Island

April 29 - May 3

*Special activities at
the theater this day



All performances take place at
Towsley Auditorium - Morris Lawrence
Building, Washtenaw Community College

wildswantheater.org
(734) 995-0530



Bill and Sherri are white, progressive, and proud. Respectively the headmaster and dean of admissions of a New Hampshire boarding school, they've dedicated their 15-year tenure to diversifying the school's mostly white population. But when their high-achieving son's Ivy League dreams are crushed, the family's reaction betrays a schism between their public values and their private aspirations. An incisively funny look at privilege, power, and the perils of whiteness.

Directed by **David Wolber**.
Featuring **Joe Bailey, Sarah Burcon, Diane Hill, Jeremy Kucharek, and Cynthia Szczesny**.



ADMISSIONS
BY JOSHUA HARMON
SEPT. 20 - OCT. 13, 2019

Theatre NOVA, 410 W Huron St., Ann Arbor, MI 48103
Tickets: \$22 (Pay-what-you-can tickets available)
theatreNOVA.org • 734-635-8450 • A2theatreNOVA@gmail.com

THE PURPLE ROSE THEATRE COMPANY

INDIVIDUAL GIVING



YOUR GIFTS AT WORK!

We are deeply grateful for gifts at all levels. Your tax-deductible donation to The Purple Rose can pay for . . .

\$50-75	a playwright fee for one Greenhouse or workshop
\$125	special effects for a single show
\$250	an Understudy's salary for 10 days
\$500	an Actor's salary for one week
\$1,000	professional design expenses for a production
\$1,500+.PRTC event sponsorship
\$5,000+ sponsoring a PRTC production
\$10,000+Purple Rose Gang sustainers

Annual donations of \$250 or greater allow for advance ticket service for one year, with the ability to purchase tickets two weeks before the general public. For a complete listing of donor benefits, please visit **www.purplerosetheatre.org/giving**.

For more complete season underwriting, production sponsorship, capital projects, deferred giving, and benefit information, please contact:

Development Director, Aubrey Martinson, at
734.433.7782 ext. 29 or Aubrey@purplerosetheatre.org.

To make a donation to The Purple Rose Theatre Company online, visit www.purplerosetheatre.org. Gifts can also be made by including PRTC in your will, by mail or over the phone:

The Purple Rose Theatre Company
137 Park Street
Chelsea, MI 48118
734.433.7782

The PRTC is a 501(c)(3) federally tax-exempt, Michigan non-profit organization. Your donations are tax deductible to the maximum allowed by law.

2019-2020 SEASON 14



The Safe House

by Kristine Thatcher
Oct. 3 - Nov. 3, 2019
A Michigan Premiere

These Mortal Hosts

by Eric Coble
Mar. 26 - April 26, 2020
A Michigan Premiere



A Christmas Carol: The Radio Show

by David Alberts
Nov. 21 - Dec. 22, 2019

Alabaster
by Audrey Cefaly
May 21 - June 21, 2020
A National New Play Network
Rolling World Premiere



900 Miles to International Falls

by Annie Martin
Jan. 30 - Mar. 1, 2020
A World Premiere

Be Here Now
by Deborah Zoe Laufer
July 9 - Aug. 9, 2020
A Michigan Premiere

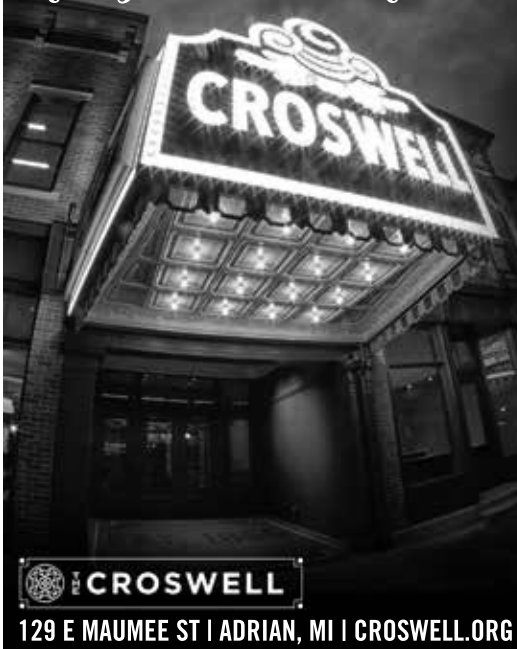


WILLIAMSTON THEATRE

122 S. Putnam Street, Williamston MI 48895
517-655-SHOW (7469) ~ www.williamstontheatre.org



Michigan's Oldest Theater



129 E MAUMEE ST | ADRIAN, MI | CROSWELL.ORG



JULY 12-21



AUGUST 9-18



SEPTEMBER 20-29

THANK YOU!

We thank you for your generous campaign support. Your gift is at the heart of everything The Purple Rose accomplishes through its Grow the Rose campaign.

We make every effort to appropriately recognize our wonderful donors at the PRTC. If your information is inaccurate or not listed below, and you believe this is in error, please contact the Development Department at 734.433.7782, and we will make this correction to our records as soon as possible. As always, we appreciate our positive relationships with our donors. Thank you!

*(Annual Gifts/Pledges reflected below were received between
July 22, 2018 - August 22, 2019.)*

MAJOR BENEFACTOR CIRCLE

(Gifts of \$25,000 and above)

Anonymous Foundation	Tom and Debby McMullen*
Anonymous Foundation	Matilda R. Wilson Fund
Ford Motor Company Fund	Michigan Council for Arts & Cultural Affairs
Peter & Patti Feeney*/ Chelsea Rhone, LLC	The Shubert Foundation Inc.
Sheila & Steve Hamp*	Peter & Carol Walters*
Maria Leonhauser & Peter Brown*	

PREMIERE CIRCLE

(Gifts of \$10,000 to \$24,999)

Anonymous Foundation	DTE Energy Foundation
Ieva Berglands*	Alfie & DeAnn Faulkner
Chelsea State Bank	Michael & Ann Feeney*
Classic Turning, Inc.	Neil & Annmarie Hawkins*
Community Foundation for Southeast Michigan	Helppie Family Charitable Foundation
Craig & Donna Common/ Common Grill*	Phil & Kim Curtis Foundation*
David A. Brandon Foundation	Daniel & Patricia Stankey*

PRODUCER CIRCLE

(Gifts of \$5,000 to \$9,999)

Jim & Debbie Beuche*	Chuck & Jan Dominick
Jack & Susan Carlson	Legacy Assisted Living Center
Chelsea Comfort Inn & Village Conference Center	Ying Li & Oliver Varban*
Chemical Bank	John & Cindy Merrifield
Mike & Melonie Colaianne Fund	Ugly Dog Distillery
-In Memory of My Brother, Todd Lancaster	Real Corporation

*Also, World Premiere Fund benefactor

(continued)

PATRON CIRCLE

(Gifts of \$2,500 to \$4,999)

Ann Arbor Area Community Foundation	Ron Hicks & Leslie Shipley
Charley & Kathy Budd	Maria Kelly & Peter Largen
Robert Caldwell	Raeann Kusch
Jeff & Kathleen Daniels	David & Celia Larsen*
John Daniels	John & Anne Mann*
Detroit Lions Foundation	McLaren Wealth Strategies
Domino's Pizza, Inc.	Melanie & George Moses
Encompass Financial Partners, LLC	Deanna Olsen
James Evering	Antoinette Pilzner & Daniel Moons*
Lloyd & Judi Ganton*	R. H. Bluestein & Company
Barry Gates & Joyce Krantz	Baiba Rahn*
Jeff Hall & Chad Losey	Russell Video
Carl Hansen & Sylvia Vance Hansen	Leslie Shipley
	Diane & Marcus Vale
	Kevin & Carolyn Van Kannel
	Willis & Jurasek, P.C.

ARTISTIC DIRECTOR CIRCLE

(Gifts of \$1,000 to \$2,499)

American 1 Credit Union	Liebler Family Foundation*
Emily Bandera M.D.	David Ligotti & Karen Quenneville*
Craig & Bev Brass	Bob & Terri Lutz*
Pamela Brown	Melissa & Dan McCance
Kathy Carter & Mack Ruffin	Patrick McCormick & Joanne Rush*
John & Anne Colone <i>In Memory of Nancee Sanville</i>	Bob & Debbie Merion
Mort & Renee Crim	Tim & Anne Merkel
Jeff & Barbara Duncan	Lee & Marge Meserve
Charles & Julia Eisendrath*	Nick Genova & Susan Agar-Genova
Vesco Oil Corporation	Dan & Kathy Nickodemus*
Foresight Group	Dennis & Carol Norton*
Mark A. Frank Family	Outliers, LLC
Carl & Barbara Galeana	Joe Parin
Richard & Leslie Helppie*	Plum Market
John Hochrein	Ann & Lou Raden
Katie & Rob Hubbard	James Rine
Greg Janz & Cindy Jovanelly	Richard & Ellen Sandor Family Foundation
Willard H. Johnson	Dr. Lynn Schachinger & Dr. Sheryl Ulin*
Jeff Klink	Audrey Schwartz Rivers
Kohler	Danna & Wade Segrest
Barb & Gene Krolak	Kenneth & Barbara Shay
La Jolla Fine Jewelry	Shinola Detroit
Jeff & Brenda Lane	George & Nancy Sloan

*Also, World Premiere Fund benefactor

(continued)

ARTISTIC DIRECTOR CIRCLE

The Sterken Family Foundation	Dr. Douglas Weaver &
Rick Taylor Real Estate	Judy St. Romain
Thrivent	Eric & Sherry Wexler
UnitedHealth Care	Jeff & Dawn Williams*
Catherine Upton & David Wesner	Theresa Wong
Doug & Susan VanArsdalen	Bill & Pam Wood*
Amy Voigt	Douglas Wood & Kay Holsinger
Mr. Warren & Mrs. Orlowska-Warren	Brian & Amy Woodruff
	J.D. & Joyce Woods

PLAYWRIGHT CIRCLE

(Gifts of \$250 to \$999)

Anonymous Donor	Deron Brod
Anonymous Donor	Barbara Bronitsky
William & Arvalene Ackley	Wendy & Scott Broshar
John & Stephanie Alexander	David Brown
American Title Company of Jackson	Jason Brown
Diane Andrasik	Tim & Cynthia Brunett
Anonymous Donor	Thomas Buchmueller &
Steve & Ann Arbaugh	Elizabeth Phillips
Rosemary Austgen	Ronald Burkman
Cynthia Avery	Dave & Mary Ann Busfield
Bagitude!	Irene & William Bushaw
Robert & Mary Baird	Dennis & April Byrne
Andrew Ballnik	David & Donna Carpenter
David Barnes & Deborah Ladenheim	Michael & Laura Carry
Dr. Beverly Baroni	Margaret Caveney
Brian & Heidi Bartes	Mike Cavin
Lee & Floy Barthel	Chamberlain Family Foundation
Clare & John Baxter	Charity Fundraising
Eugene & Lori Beach	Chelsea Cornerstone, LLC
Marlene Beck	Blair Clark
William Belanger	Brian & Cheryl Clarkson
Hillary Bennett	Larry Clayton
James A. Bergman Trust	Larry & Jennifer Coates
Don & Linda Bernardi	Cole Family Foundation
Belinda Bicknell & Gary Witus	Coleman's Corn Maze
Amanda Black	Daniel & Muriel Converse
Todd & Penny Blackburn	Constance & James Cook
The Boeing Company	James M. Cook
Ronald & Mimi Bogdasarian	Nancy Cooper
Diane Bower	Kevin & Patricia Corr
Kenneth Boyer	Charles & Susan Craves*
Annette Bragalone	Creative Arts Studio
Patricia Brainard & Scott Tatro	Becky Crumpand Paul Gottschalk
Jim & Robbie Brandstatter	Paul & Barbara Cumming

**Also, World Premiere Fund benefactor*

(continued)

PLAYWRIGHT CIRCLE

David & Denise Currin	Jim Heaton & Lou Ellyn Green
Steven Cyncewicz	Robert & Joyce Hetzler
Carey Crim & George Defotis	Glenn & Lisa Higgins
Detroit Metal Works	James & Sharon Hobson
Fred & Sally Dickinson	Daphne Hodder
Patrick & Robin Dickson	Jeffrey & Maxine Hoffman
Karen Dillon	Joel & Kathy Hoffman
Don Black	Mike & Nancy Hollerbach
Skip & Michelle Dorrington	Nancy Homburg
Linda Dowsett	L Rowell & Penny Huesmann
James & Cathie Dries	Ellen Ives & Colleen Johnson <i>In</i>
Kenneth Duck & Mary Gallagher	<i>Memory of Patricia Hobar and</i>
David & Joanne Duff	<i>in Honor of all The Purple Rose</i>
Sandy Duncan	<i>Apprentices past, present, & future!</i>
EDSS	Jay & Valentina Jindal
Sue & Bob Elkins	Wendy & Kent Kanipe
James Eng	Carol & Peter Kappus
Helen Etkin	Jim Keller & Mary Ellen Hoy
Executive Education, Inc.	Sally & David Kennedy
Damian & Katherine Farrell	James & Patricia Kessler
Mike Foresman	Paul & Leah Kileny
Randall & Christine Forsch	Catherine Kimmel
Perry & Elenor Francis	Jewelry Set In Stone
Judith Freedman	Judy & David Konst
Robyn Frey & Lawrence King	Sam & Marilyn Krimm
Martha Fuerstenau	Karen Kruise
G L & A, LLC	Richard & Melanie Kursinsky
Otto & Lourdes Gago	Helen Lancaster
Steven & Martina Garland	David Langendorfer
Kim & Diane Gasior	LangeTwins Family Winery &
Robert & Henrietta Georgevich	Vineyards
David & Maureen Ginsburg	Brandon Layne
John & Patricia Glidewell	Aaron & Heather Letscher <i>In Memory</i>
Frank & Emily Gobright	<i>of Nancee Sanville</i>
Judith & Richard Golden	Amy & Jason Lindauer <i>In Memory of</i>
Mark & Brenda Goodman	<i>Nancee Sanville</i>
Robert H. Gray & Susan M. Smith	Herbert & Karla Linkner
Michael & Libby Greanya	Suzette Lixie
Joe & Mary Green	Janet Lockwood
Two Storyline Project LLC*	Elizabeth Long
Deborah Greenspan	Remy Long & Allene Smith
Ron & Sharon Griffith	Dennis & Connie Lopatin
Jill Groom <i>In Memory of My</i>	Tony & Betty Lorenzi
<i>Husband Marv</i>	Dean & Gwen Louis
William Groves	Margaret Loy
John & Mary Ann Guthrie	Garis de Paris
Eric Haag & Julie Nurnberger-Haag	Michael & Pamela Marcovitz
Brian & Kirsten Hallstrom	David Marold & Sheila York
Jeff & Debra Hardcastle	Ann Martin & Russ Larson
Woody & Susan Harrington	Frank Martin

*Also, World Premiere Fund benefactor

(continued)

PLAYWRIGHT CIRCLE

Irwin & Fran Martin	Frederick & Diane Schmid
Aubrey Martinson	Michael Schroer
David & Marjorie Mastie	Brian & Denise Schuh
Terri & Richard McCalla	Aileen Mengel Schulze <i>In Memory of</i>
Griff & Pat McDonald	<i>Nancee Sanville</i>
Donald & Marilyn Meier	Joe Schwarz MD*
Hank & Liesel Meijer	Secret Crisis Comics
Steve & Rhonda Melchi	Stuart & Angela Sedlacek
Jack & Mary Ann Merkel	Elizabeth Sensoli
Pat & Sandy Merkel	Peter & Nettie Severn
Robert & Shelagh Miller	Candice Shavalia & David Strauss
Daniel Minzy	Richard Sherburne
Kathleen Moisan	Thomas & Mary K Shields
The Richard & Nancy Monk	Jean & Thomas Shope
Charitable Fund	David & Nancy Siegel
William & Jeanne Nance	Ed & Kathy Silver
Leslie Neville	Peter & Sharon Silveri
Rial & Annette Newland	Jennifer Sinclair*
Janet & Mark Nisbett	Matt Burke & Vicki Sistek
Richard Northway	Brooks & Nancy Sitterley
John & Lexa O'Brien	Jeff Spindler
Edmund & Jane Outslay	Katherine Spindler
Donna Parke	Spring Arbor University
John & Mary Parker	Stella Stephens
Janet Peacock	William Stickney
Eric Peterson & Kristin Langellier	Jeff Stoller
Barbara Petoskey & James Salay	Dennis & Jan Sullivan
Rob & Deb Piatkowski	George & Mary Tewksbury
Dominic & Julie Pinciotti <i>In Memory</i>	The Acting Company
<i>of Nancee Sanville</i>	The Apple Matching Gifts Program
Max & Sherri Plank	Emily & David Seitz
Milene Plisko	Michael & Cynthia Thomas
Lee & Sandra Porterfield	David & Caren Thompson
Rick Powell & Rita Ayyanger, MD	Travis Pointe Country Club
Timothy Richards &	Phil Tuchinsky
Constance McGuire	Tulip Tree Gardens
Phillip & Nora Rieves	Roger & Dolly Tworek
Mark & Kathy Roeser	Bob & Susie Ufer
Mike & Anne Roman	ULitho
Thomas Root	Barbara Underwood & David Patria
Ami & Prue Rosenthal	University Of Michigan Athletics
George Aler & Elyce Rotella	Karen Valvo
Rudolf E. Wilhelm Fund	John & Susan Wacksmuth
Deborah Rutherford	Waterloo Upholstery
Joan Sampieri	Kevin & Betsy Watson
Perry Samson & Deborah Gibson	Tom & Sandy Weimert
Julia Schachinger	Sandra Weintraub
Randy & Marita Schiffman	Susan & Peter Westerman
Jackie Schiller	Rita Wetzol

*Also, World Premiere Fund benefactor

(continued)

PLAYWRIGHT CIRCLE

George S. White & Lynda Allen	James & Dianna Wright
Jason Wickman & Amy Mitchell	Steven Yarows
Shirley Williams	The Standard Bistro
Tim & Linda Willibey	James & Nancy Zajdel-Wright
Karen Wilson-Smithbauer	Stephen & Jane Zawistowski
Jack & Friedelle Winans	Yuchen Zhou
Mike & Diane Worthing	

CAST CIRCLE

(Gifts of \$100 to \$249)

Terry & Cindy Ahern	Jan & Scott Cooper <i>In Memory of</i>
Walter & Cindy Alix	<i>Nancee Sanville</i>
Amazon Smile	James & June Coyne
Anonymous Donor <i>In Memory of</i>	Karen Crawford & Bill Welch
<i>Nancee Sanville</i>	Lawrence & Jennifer Cray
Ann Arbor Distilling Company	R.W. & Peggy Cronenweth
Applied Storytelling	Christine Crouner
Marilynn Arnold	Richard & Barbara Czarnota
Gary A. Bailey	Marjorie Daniels
Rodney Barron	Thomas & Nancy Davies
Stephen C. Bayne &	Dianne Davis
Sharon K. Grayden	Thomas & Jean Davis
Henry & Molly Bazydlo	Jeannine Dawson
Steve Berglund	David & Kay Deering <i>In Memory of</i>
Peter Bertocci	<i>Nancee Sanville</i>
Ryan Black	Matthew DeLand
Thomas & Mary Steffek Blaske	Ron & Dee Dershem
Bob Bluhm &	Gene & Barbara Dickirson
Sherle Abramson-Bluhm	John & Linda Dietrich <i>In Memory of</i>
John Bogdasarian	<i>Nancee Sanville</i>
John & Leora Bowden	William & Jean Dietrich <i>In Memory</i>
Paul Boylan	<i>of Nancee Sanville</i>
Joel Bregman & Elaine Pomeranz	Molly Dobson
Nancy Burns	Robert & Brenda Doral <i>In Memory</i>
Evelyn Burton	<i>of Nancee Sanville</i>
William Cabin	Thomas Drinkwater
Albert C. Cattell	Rita & Mort Dunlop
Christina Cattell	Tom & Lynn Dunn
Michael Champ	Daniel Eckhout
Chelsea Lanes	Donald Enderby
Cherry Republic	Don & Gwen Evich
Martha Clapsaddle	Michael Falatine
	Liz & Sam Febba

*Also, World Premiere Fund benefactor

CAST CIRCLE

L. Alan & Nancy Finlayson	Michael S. Madden
Jane Fitzgerald	Norman Marchetti
Jeff Frank	Larry & Rowena Matthews
Bill & Boc Fulton	Donald May
Judith Gardzinski	Janet Maylie <i>In Memory of</i>
Julia Garlotte	<i>Nancee Sanville</i>
Erika George	Alice McCreary
Ariel Gold	Margot & Tom Mehringer
Larry & Martha Gray	Linda & Chris Meloche
Maryann & Marv Guenther	Microsoft
Keith & Georgette Hansen	Carol & Bill Middel
Michael & Anne Hause	Alexandra & Matt Moore
Michael Hayes	Mary Mostaghim
Bill & Lisa Hayhow	Roger & Beth Mulder
George Collins & Paula Hencken	Ruth Ann Musbach
DeAnn Hervey	Alexander & Carole Nakeff
QTB Packaging LLC & Change of	David & Jeanne Neuhoff
Seasons LLC	Rebecca Nickels
Cali Hobgood Photography	Cherie Nixon
Home Box Office	Tracy Page
Patricia A. Huntington	Kyle & Renee Chase
Vicky Hurst	Pat, Joan, & Meg - Cleary's Pub
Gary & Denise Iams	Lisa Patrell
Erich & Ann Marie Jensen	Don & Pat Paulsell
Steve & Callie Jerant	Lawrence & Nancy Peters
George & Noreen Johnson	Pfizer Foundation Matching
Patricia Johnson	Gifts Program
Reid Johnson	Carma Philip
James & Joanna Kastely	Janet Pounds
Kennard Family Charitable Fund	John & Sally Preston
Dennis & Ruth Kenny	David & Marcia Quilter
Mark & Elizabeth Ketterer	Dick & Linda Radtke
Anthony & Phoebe Klain	Robert & Susie Raisch* <i>In Honor of</i>
Arnold & Jean Kluge	<i>Jeff's Emmy Win!</i>
Julie Koss	Hope Raymond
Allegra Kranz	Joe Reecher
Adrian Kreger	Ed & Mary Reid-Selth
David & Mary Laidlaw	Edwin Reid-Selth
Campbell & Frances Laird	Janet Repp
Peter & Susan Lee	Patrick & Mary Roche
Matt & Jennifer Letscher <i>In Memory</i>	Drs. Mark & Karen Harlow
<i>of Nancee Sanville</i>	Rosentraub
Franette Liebow & Jeffrey Goldman	Royal Princess Parties
<i>In Memory of Nancee Sanville</i>	James C. & Laura Rozycki
Gary MacDonald	Ruth's Chris Steakhouse
	Marla Sanford
	Marni Schmid
	Thomas Schmitz
	Mary Schulze

*Also, World Premiere Fund benefactor

(continued)

TIPPING
POINT
THEATRE.

Season 13

Season Passes on sale NOW!

Enjoy
six shows
for as low
as \$132!

A DOLL'S HOUSE, PART 2

by Lucas Hnath

Sept. 19 - Oct. 20 | It's time to open the door again.

EVERY CHRISTMAS STORY EVER TOLD (AND THEN SOME!)

by Michael Carleton, Jim FitzGerald, and John K. Alvarez

Nov. 14 - Dec. 22 | Why see A Christmas Carol when you can see ALL the Christmas carols?

THE 39 STEPS

by John Buchan

Jan. 30 - March 8 | Murder. Mystery. Comedy. Shaken not stirred.

THE BAXTER SISTERS

by Kim Carney

April 2 - May 3 | Family always comes first.

PRELUDE TO A KISS

by Craig Lucas

May 28 - June 28 | Happily ever after doesn't always come easily.

THE THANKSGIVING PLAY

by Larissa FastHorse

July 23 - Aug. 23, 2020 | The play that goes too far by trying not to.

LIVE, PROFESSIONAL THEATRE IN DOWNTOWN NORTHVILLE

361 E. Cady St., Northville, MI 48167 | TippingPointTheatre.com | 248-347-0003



THE MUSICAL

THE CROSWELL
Broadway Season

NOV. 22
THRU
DEC. 8

UNDER THE
Streetlamp
Hip to the Holidays

AT THE CROSWELL
DECEMBER 21



CROSWELL

129 E MAUMEE ST • ADRIAN, MI • CROSWELL.ORG

CAST CIRCLE

Dale & Nancy Schumann	Phil Walton
John Secrist	Judy Ward
Bruce & Lisa Shapiro	Ruth A. Watson
Patti & Bob Shaw	Ron & Eileen Weiser
Matthew Sheehy	Arthur & Sandra Welch
Cliff & Ingrid Sheldon	Lisa Whalen <i>In Memory of</i>
Patrick & Susan Shields	<i>Nancee Sanville</i>
Joan & Ron Smith	John Whitaker
Jan & Mark Sockness	Avis L. White
William & Mary Stuart	Sandy & Sarah Wiener
Tim & Patti Sweeny	Stuart & Nancy Winston
The Crofoot	Denise Wirtz
Madeline & Steve Thiry M.D. <i>In</i>	David & Jean Wolski
<i>Memory of Nancee Sanville</i>	Sally Wright Smith
Jane & Nigel Thompson	Steve & Dayle Wright
Janette & Martin Tobin	Henry Zelisse
Howard & Denise Treado	Paul A. & Imogene Zimmermann
Timothy Treado	Zou Zou's Cafe
Allen & Beth Tucker	Fred & Miriam Sass Zuidveld
USArtQuest	Lois Zurvalec
Ann Utter	Susan H. & David S. Zurvalec
Joan Voigt	

CAPITAL SUPPORT

Anonymous	Carl Hansen
Anonymous Foundation	Shirley J. Herrick
F. Ross & Laura Jean Birkhill Family	Kohler Company
Foundation	Michigan Council for Arts
Ford Motor Company Fund	& Cultural Affairs
The Hamp Family*	Matilda R. Wilson Fund

ENDOWMENT SUPPORT

Anonymous*	The Hamp Family*
Gary Ciarkowski	Donald Warren &
Thomas D. Davies	Lenore Orlowska-Warren
Charles & Julia Eisendrath*	

*Also, World Premiere Fund benefactor

Jackson's Leading
Source for News,
Information and
Entertainment. JTV is
Jackson TV.



Watch JTV on Comcast, AT&T U-Verse,
WOW, Roku, Amazon Fire TV and
online at www.jtv.tv.



A Wilde Theatre

Where anything can happen!

Dec. 6 - Dec 15, 2019
Friday and Saturday at 8:00 p.m.
Sunday at 2:00 p.m.

Nuncrackers

A Nunsense Christmas Musical!

Book, Music and Lyrics Dan Goggin

Directed by Lynn Wilde

Reserved Tickets on Sale Now!
www.AWildeTheatre.com

Like us on Facebook!



Performances at the
Brighton Coffeehouse
and Theater

The Brighton



361 W. Main Street
Brighton 48116

Live Professional
Theatre

FALL/WINTER CLASSES

Actor/Director Lab

Mondays, October 14 - December 2, 2019

\$425; 7-11PM

Instructors: Guy Sanville, Michelle Mountain, Lauren Knox

Limit: 13 actors, 6 directors (directors by invitation)

Must be 18 years of age or older to participate.

Our premier class, the most selective and rigorous, includes physical training, monologue work, and extensive scene study. Students will acquire the tools that professional actors and directors use in their craft. Two to four hours per week of rehearsal time with a group is required outside of class. Beginners welcome.

Winter Actor's Boot Camp

Friday, January 31 - Sunday, February 2, 2020

\$350; Friday 7 - 11PM, Saturday 11AM-6PM, Sunday 11AM-3PM

Instructors: Guy Sanville & Michelle Mountain

Limit: 14 actors

Must be 18 years of age or older to participate.

Spend three days of intensive study in acting techniques used by working professionals. Features physical warm-ups, acting exercises, monologue work, and a Q&A about the industry. Students must come prepared with a memorized one-minute contemporary comedic monologue from a published play. A great class for actors to get a taste of the acting principles that guide Purple Rose artists in their work, guaranteed to leave you physically, spiritually, and emotionally inspired. Beginners welcome. Lunch will be provided on Saturday.

Voice & Movement Intensive

Friday, February 21 - Sunday, February 23, 2020

\$325; Friday 7 - 11PM, Saturday 11AM-6PM, Sunday 11AM-3PM

Instructors: Michelle Mountain & Angie Kane

Limit: 16 actors

Must be 18 years of age or older to participate.

The voice and the body are the actor's most important instruments. This course is designed to open up and free these instruments through relaxation, breaking through habitual tension and body patterns and deepening the understanding of one's inner life and outer behavior. The goal is to surrender to the true self so we can work with ease and authenticity. Beginners welcome. Lunch will be provided on Saturday.

Shakespeare at The Rose

Mondays, January 27 -February 24, 2020

\$350; 7-10PM

Instructors: Michelle Mountain & Caitlin Cavanaugh

Limit: 12 actors

Must be 18 years of age or older to participate.

Journey into the heart of Shakespeare. Dive into the text, unearthing the truth in the scene or monologue as you move within and through it. Delve into the clues within the text, applying the fundamental principals of acting we employ here at The Rose to these incredible monologues and scenes. This class will give you the tools to approach Shakespeare with confidence, adventure, honesty, and joy. Participants must come prepared with a memorized monologue (in verse). Beginners welcome.

Register today at PurpleRoseTheatre.org

The Purple Rose Theatre Company Productions

1991

*Blush at Nothing**
by Lisa A. Wing
February 7-March 24, 1991

*Shoe Man**
by Jeff Daniels
April 25-July 21, 1991

1991 / 1992

Kuru
by Josh C. Manheimer
September 5-October 27, 1991

*Ties That Bind**
by Kitty Dubin
Nov 14, 1991-January 5, 1992

More Fun Than Bowling
by Steven Dietz
January 23-April 12, 1992

*The Tropical Pickle**
by Jeff Daniels
May 7-August 30, 1992

1992 / 1993

Possessed: The Dracula Musical
Book by Robert Marasco
& Jason Darrow
Music by Carter Cathcart
October 1-December 20, 1992

Necessities
by Velina Hasu Houston
January 14-March 7, 1993

National Anthems
by Dennis McIntyre
April 1-June 5, 1993

*Nooner**
by Kim Carney
June 17-August 29, 1993

1993 / 1994

*The Vast Difference**
by Jeff Daniels
October 7, 1993-January 9, 1994

*Two Sisters**
by T. E. Williams
January 27-March 20, 1994

Keely and Du
by Jane Martin
March 31-May 22, 1994

Stanton's Garage
by Joan Ackermann
June 9-August 28, 1994

1994 / 1995

*Thy Kingdom's Coming**
by Jeff Daniels
October 6-December 23, 1994

*Only Me and You**
by Kim Carney
January 19-March 12, 1995

*Hang the Moon**
by Suzanne Burr
March 31-May 21, 1995

Weekend Comedy
by Jeanne and Sam Bobrick
June 8-August 20, 1995

1995 / 1996

*Escanaba in da Moonlight**
by Jeff Daniels
September 28-December 23, 1995

Beast on the Moon
by Richard Kalinoski
January 18-March 10, 1996

*The Purple Rose
Spring Comedy Festival**
by various playwrights
March 28-May 19, 1996

*The Harmony Codes**
by Michael Grady
June 6-August 25, 1996

1996 / 1997

*Apartment 3A**
by Jeff Daniels
September 26-December 21, 1996

*Labor Day**
by Kim Carney
January 16-March 8, 1997

The Hot L Baltimore
by Lanford Wilson
March 27-May 31, 1997

Off the Map
by Joan Ackermann
June 19-August 23, 1997

1997 / 1998

Escanaba in da Moonlight
by Jeff Daniels
September 18-December 20, 1997

Julie Johnson
by Wendy Hammond
January 22-March 14, 1998

*World Premiere

The Purple Rose Theatre Company Productions

*Book of Days**

by Lanford Wilson
April 2-June 27, 1998

*Marcus is Walking**

by Joan Ackermann
July 16-September 12, 1998

1998 / 1999

*Boom Town**

by Jeff Daniels
October 8-December 19, 1998

*The Hole**

by Wendy Hammond
January 28-March 20, 1999

The Big Slam

by Bill Corbett
April 8-June 12, 1999

Criminal Genius

by George F. Walker
July 1-August 22, 1999

1999 / 2000

The PRTC moved into temporary offices in September 1999 while the building underwent a 16-month renovation project.

2000 / 2001

*Rain Dance**

by Lanford Wilson
January 11-March 17, 2001

*Orphan Train: An American Melodrama**

by Dennis North
April 12-June 16, 2001

*Completing Dahlia**

by Annie Martin
July 12-September 1, 2001

2001 / 2002

Guys on Ice

by James Kaplan & Fred Alley
October 4-December 22, 2001

*Months on End**

by Craig Pospisil
January 17-March 16, 2002

Born Yesterday

by Garson Kanin
April 4-June 15, 2002

*Let It Be**

by Dennis North
July 11-August 31, 2002

2002 / 2003

*Across the Way**

by Jeff Daniels
September 26-December 21, 2002

*Stand**

by Toni Press-Coffman
January 23-March 15, 2003

*Hope for Corky**

by Randall Godwin
April 3-May 31, 2003

Blithe Spirit

by Noel Coward
June 19-August 30, 2003

2003 / 2004

The Good Doctor

by Neil Simon
October 2-December 20, 2003

*Leaving Iowa**

by Tim Clue & Spike Manton
January 22-March 13, 2004

The Underpants

by Carl Sternheim
Adaptation by Steve Martin
April 1-June 5, 2004

*Duck Hunter Shoots Angel**

by Mitch Albom
June 24-September 18, 2004



Guys on Ice

*World Premiere

The Purple Rose Theatre Company Productions

2004 / 2005

The Mystery of Irma Vep
by Charles Ludlam
October 7-December 18, 2004

*Norma & Wanda**
by Jeff Daniels
January 20-March 19, 2005

Bus Stop
by William Inge
April 7-June 4, 2005

*And the Winner Is**
by Mitch Albom
June 23-September 24, 2005

2005 / 2006

The Glass Menagerie
by Tennessee Williams
October 20-December 17, 2005

*Guest Artist**
by Jeff Daniels
January 19-March 18, 2006

*The Late Great Henry Boyle**
by David MacGregor
April 6-June 3, 2006

Honus and Me
by Steven Dietz
based on the novel by Dan Gutman
June 22-September 2, 2006

2006 / 2007

*Escanaba In Love**
by Jeff Daniels
Sept 28, 2006-January 20, 2007

The Subject Was Roses
by Frank D. Gilroy
February 8-March 17, 2007



Escanaba In Love

*When the Lights Come On**
by Brian Letscher
April 5-June 2, 2007

*Sea of Fools**
by Matt Letscher
June 21-September 1, 2007

2007 / 2008

*The Poetry of Pizza**
by Deborah Brevoort
October 4-December 22, 2007

*Vino Veritas**
by David MacGregor
January 17-March 8, 2008

*Growing Pretty**
by Carey Crim
March 27-April 23, 2008

*Panhandle Slim & The Oklahoma Kid**
by Jeff Daniels
June 19-September 27, 2008

2008 / 2009

Apartment 3A
by Jeff Daniels
October 16-December 20, 2008

A Streetcar Named Desire
by Tennessee Williams
January 22-March 21, 2009

*Bleeding Red**
by Michael Brian Ogden
April 9-May 30, 2009

*Wake**
by Carey Crim
June 18-August 22, 2009

2009 / 2010

*Escanaba**
by Jeff Daniels
Sept 17, 2009 - January 23, 2010

*Gravity**
by David MacGregor
February 11-March 27, 2010

Our Town
by Thornton Wilder
April 15-May 29, 2010

Boeing-Boeing
by Marc Camoletti
adapted by Beverley Cross
June 17-September 11, 2010

*World Premiere

The Purple Rose Theatre Company Productions

2010 / 2011

*Best of Friends**
by Jeff Daniels
October 14-December 18, 2010

*Corktown**
by Michael Brian Ogden
January 20-March 5, 2011

*Some Couples May...**
by Carey Crim
March 24-May 28, 2011

*Consider the Oyster**
by David MacGregor
June 16-September 3, 2011

2011 / 2012

Escanaba in da Moonlight
by Jeff Daniels
September 22 - December 31, 2011

A Stone Carver
by William Mastrosimone
January 19 - March 10, 2012

*White Buffalo**
by Don Zolidis
March 29 - June 2, 2012

On Golden Pond
by Ernest Thompson
June 21 - September 1, 2012

2012 / 2013

Superior Donuts
by Tracy Letts
September 20 - December 15, 2012

*The Meaning of Almost Everything**
by Jeff Daniels
January 10 - March 9, 2013

33 Variations
by Moisés Kaufman
March 28 - June 1, 2013

*Miles & Ellie**
by Don Zolidis
June 20 - August 31, 2013

2013 / 2014

The Vast Difference
by Jeff Daniels
September 19 - December 18, 2013

Redwood Curtain
by Lanford Wilson
January 16 - March 15, 2014

*The PRTC Spring Comedy Festival:
Lovers, Liars & Lunatics**
by various playwrights
April 3 - May 24, 2014

The Last Romance
by Joe DiPietro
June 12 - August 30, 2014

2014 / 2015

Annapurna
by Sharr White
September 18 - December 13, 2014

Steel Magnolias
by Robert Harling
January 15 - March 14, 2015

Talley's Folly
by Lanford Wilson
April 2 - May 23, 2015

*2AZ**
by Michael Brian Ogden
June 11 - July 26, 2015



Steel Magnolias

*World Premiere

The Purple Rose Theatre Company Productions

2015 / 2016 (25th Anniversary)

*Castling Session**
by Jeff Daniels
September 17 - December 19, 2015

The Odd Couple
by Neil Simon
January 21 - March 26, 2016

*Gaps in the Fossil Record**
by Matt Letscher
April 14 - May 28, 2016

Morning's At Seven
by Paul Osborn
June 16 - August 27, 2016

2018 / 2019

*Diva Royale**
by Jeff Daniels
September 20 - December 29, 2018

*Never Not Once**
by Carey Crim
January 17 - March 16, 2019

All My Sons
by Arthur Miller
April 4 - June 1, 2019

*Welcome to Paradise**
by Julie Marino
June 20 - August 31, 2019

2016 / 2017

*Morning After Grace**
by Carey Crim
September 29 - December 17, 2016

*Smart Love**
by Brian Letscher
January 19 - March 4, 2017

Vino Veritas
by David MacGregor
March 23 - May 27, 2017

Harvey
by Mary Chase
June 15 - August 26, 2017

2019 / 2020

*Sherlock Holmes and the Adventure of the Fallen Soufflé**
by David MacGregor
September 19 - December 21, 2019

*Roadsigns**
by Jeff Daniels
January 16 - March 14, 2020

*Paint Night**
by Carey Crim
April 2 - May 30, 2020

*A Walk Around the Table**
by Lauren Knox
June 18 - August 29, 2020

2017 / 2018

God of Carnage
by Yasmina Reza
translated by Christopher Hampton
September 28 - December 16, 2017

*FLINT**
by Jeff Daniels
January 18 - March 10, 2018

*Sherlock Holmes and the Adventure of the Elusive Ear**
by David MacGregor
March 29 - May 26, 2018

*Willow Run**
by Jeff Duncan
June 14 - September 1, 2018



Willow Run

*World Premiere

A TRADITION OF Sustainable Winegrowing



LANGETWINS

FAMILY WINERY AND VINEYARDS

For five generations we have been growing winegrapes in the Lodi appellation. In 2006 we opened a winery with our families to showcase our passion for growing sustainable winegrapes—because great wine starts in the vineyard. Cheers! —Randall and Brad Lango, The Twins

Please look for our estate grown wines in your neighborhood: Sauvignon Blanc, Chardonnay, Moscato, Cabernet, Zinfandel

Lodi, California
LANGETWINS.COM

PATRON INFORMATION

Contact

Address: 137 Park Street
Chelsea, MI 48118
Box Office: 734.433.7673
tickets@purplerosetheatre.org
Administration: 734.433.7782
info@purplerosetheatre.org
Fax: 734.475.0802

Box Office Hours

Monday through Friday:
10:00 AM - 6:00 PM

Performance days:

Wednesday	10:00 AM - 6:00 PM
Thurs & Fri	10:00 AM - 10:00 PM
Saturday	Noon - 10:00 PM
Sunday	Noon - 4:00 PM

Performance Times

Wednesday at 3:00 PM
Thursday & Friday at 8:00 PM
Saturday at 3:00 PM & 8:00 PM
Sunday at 2:00 PM

Visit PurpleRoseTheatre.org for complete schedules and added performance dates.

Tickets

Tickets may be purchased by phone or online at www.PurpleRoseTheatre.org with Visa, MasterCard or American Express.

Full payment is due at time of reservation. Patrons may exchange or cancel tickets up to 24 hours prior to performance without penalty. Web sales fees are nonrefundable.

Group reservations for 12 or more are available at a discount of \$4 per ticket. Tickets must be pre-paid three weeks prior to performance.

Gift Cards

Gift Cards are available in any amount! See the Box Office for more details!

No Smoking Policy

Smoking is not permitted inside the building.

Cameras and Recording Devices

The making of photographs and/or recordings is strictly prohibited inside the theatre.

Electronic Devices

During performances, please turn off or silence cellular phones, watch alarms and other electronic devices.

Accessibility

The PRTC complies with all current ADA Standards. Assisted listening devices and large print programs are available upon request at our Box Office for all performances.

Refreshments

Please do not bring anything to eat or drink into the theatre.

Babes-in-arms

Out of consideration for our patrons and performers, babes-in-arms are not allowed in our theatre during performances.

Complimentary Cough Tablets

These are available at the Box Office. To avoid performance distractions, please unwrap them prior to the performance, at intermission or during the break between scenes.

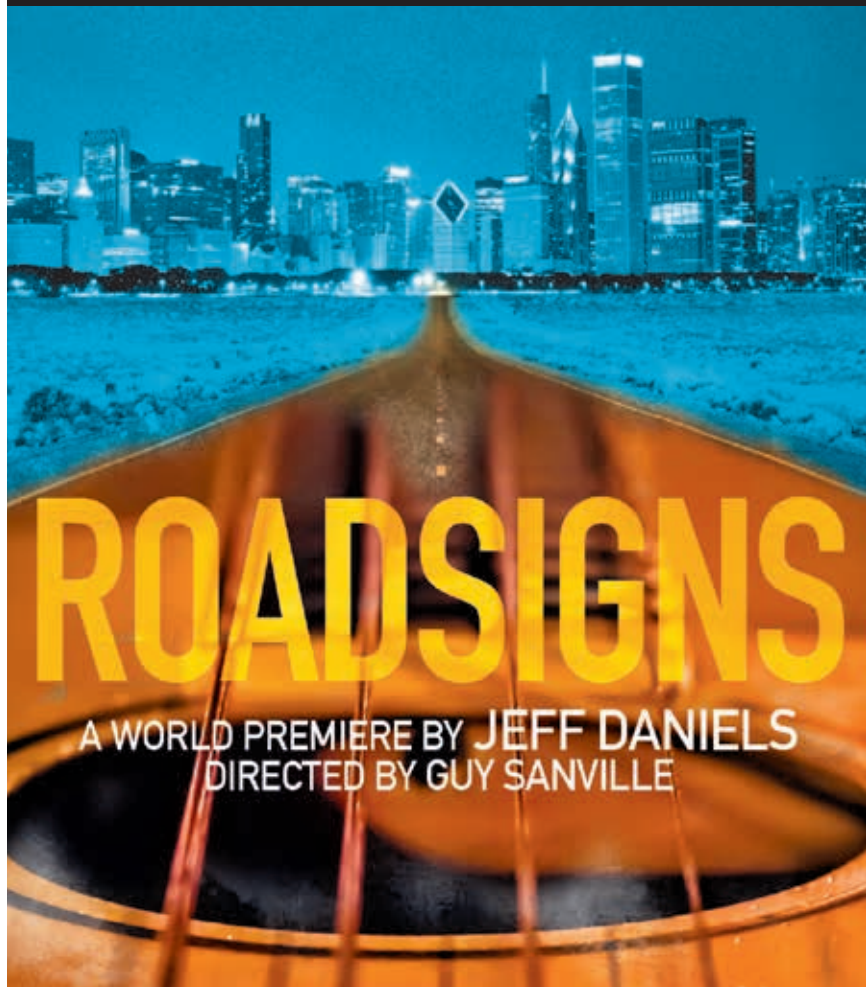
Please Remain Seated

Actors may be using the aisles for entrances and exits during the show.

Late Seating

Once the performance has begun, seating is at the discretion of the House Manager.

UP NEXT...



ROADSIGNS

a World Premiere by Jeff Daniels

directed by Guy Sanville

January 16 - March 14, 2020

Roadsigns is a beautiful, lyrical new play by Jeff Daniels. The play follows Lance, a young poet, as he embarks on a journey to find the way to himself. This nostalgic tale is filled with rich characters who dwell on the outskirts of life, each following a dream or hoping to bump into one. Original music by Jeff Daniels and Ben Daniels.

**Contains adult language & content.*

Sponsored by: Chelsea State Bank

driving a brighter future

Ford Motor Company Fund



Thanks to you, our community is a stronger, better place.

Ford salutes the Purple Rose Theatre.

www.community.ford.com