



the
PurpleRose
theatre company

WHAT SPRINGS FORTH

**A World Premiere
by Carey Crim**

directed by Kate Thomsen





COME CELEBRATE WITH US!

- MILESTONE BIRTHDAYS
40TH, 50TH, 60TH B-DAY PARTIES
- CORPORATE OUTINGS
- DATE NIGHTS
- FAMILY FUN DAYS

BIG BEST IN GAMES

EATS - GAMES - DRINKS

4095 Carpenter Rd, Ypsilanti MI

BestInGames.com

KARTING • AXE THROWING
FOOTBALL BOWLING
150+ ARCADE GAMES
15+ ATTRACTIONS

COME CHECK US OUT!
FREE \$10 ARCADE CARD
VALID ONE PER PERSON PER VISIT. TERMS & CONDITIONS APPLY.

For this last production of our 2023/2024 season, we wanted to give you a glimpse behind the curtain of this exciting World Premiere comedy. So we asked our *What Springs Forth* director, Kate Thomsen, a few questions to get the inside scoop. Please enjoy and we hope you love our summer show!

How did you get into theatre, Kate?

I have always loved stories. Getting lost and found inside literature has given me great joy throughout my life. I especially love how theatre makes that joy of getting “lost and found” so collaborative.

What inspires you to do what you do as a director?

I take comedy so very seriously!! If we can’t laugh along the way, I’m not sure how we’d all go about carrying on! I love that a comedy can unite a room in this totally-present experience in a way that almost nothing else can. I love that art reminds us in so many ways that we haven’t figured it all out just yet.

What is the biggest difference between directing a World Premiere play and a published play?

A World Premiere is this constantly-moving very LIVING thing!! The playwright is IN the room, which is a thrill, and that means the room is a space of VERY active listening. For me, this is so exciting because it removes any opportunity the collaborators might have to take the text for granted. We must remain an active and nimble room when working on new plays, and this always makes the work feel exciting.

What was it like working with a living playwright?

I am in awe of the writing process. Carey has such a sensitivity to story, to rhythm, to character, to comedy. Her ability to “sculpt” her script in real-time is inspiring.

What was the most challenging part of bringing this script to life?

There are some ambitious physical sequences in this story!

What do you hope this play does for the audience?

Well, I do hope the audience gets a few belly laughs. And I hope there is a bit of “getting lost and found” inside the story for every audience in our space.

What advice would you give for someone starting out in the arts?

Just keep creating. Don’t do it for someone else. Do it for you. Paint the painting you need to see. Write the song you need to hear.



KATE THOMSEN
What Springs Forth Director
Purple Rose Resident Artist

**A Special Thank You To Our
2023-2024 Season Underwriters:**

Michigan Arts and Culture Council

National Endowment for the Arts

The Shubert Foundation

The Matilda R. Wilson Fund

“What Springs Forth” Production Sponsors:

Giraffe Design Build

The Hamp Family

Drs. Ying Li & Oliver Varban

This production is supported in part by an award from
MICHIGAN ARTS AND CULTURE COUNCIL
and NATIONAL ENDOWMENT FOR THE ARTS.



**NATIONAL
ENDOWMENT** for the **ARTS**
arts.gov

 the
PurpleRose
theatre company

JEFF DANIELS
Founder & Artistic Director

KATIE HUBBARD
Managing Director

with media partners
JTV | Michigan Radio

presents

WHAT SPRINGS FORTH

by Carey Crim

Set Design
SARAH PEARLINE

Costume Design
SUZANNE YOUNG

Lighting Design
NOELE STOLLMACK

Properties Design
DANNA SEGREST

Sound Design
VICTORIA DEIORIO

Stage Manager
STEFANIE DIN*

Intimacy Direction &
Fight Choreography
ALEXIS BLACK

Assistant Director
K. EDMONDS

Director
KATE THOMSEN

*member of Actors' Equity Association, the Union of
Professional Actors and Stage Managers in the United States.



THE PERFECT SHOT:

Walter looss Jr.
& the Art of Sports Photography

Sep. 6–Oct. 20 | 221 S. Main St., Chelsea



Connect with the universal emotions of anticipation, perseverance, triumph, disappointment, and reflection through the brilliant photography of Walter looss Jr.

CAST OF CHARACTERS

Robyn Dwandra Nickole*
Sallie Ben Sonja Marquis*
Emma Sarab Kamoo*
Malou Suzi Regan*

*member of Actors' Equity Association, the Union of Professional Actors and Stage Managers in the United States.

PLACE

Deep in the woods.

TIME

Present Day.

PLEASE NOTE

There is NO intermission during the performance.

Please keep the aisles clear for the actors' entrances and exits.

The making of photographs and/or recordings inside the theatre is strictly prohibited.

Food or drink inside the theatre is prohibited.

SOUNDS & SIGHTS
SCULPTURE WALK
All Year Long

SOUNDS & SIGHTS
FESTIVAL
DOWNTOWN CHELSEA, MICHIGAN
July 26-27, 2024


Chelsea
MICH
TRAIL CHALLENGE
February–November

CHELSEA
FAIR
August 20-24, 2024

Visit
Chelsea this
Summer &
throughout
the year!

Chelsea
MICH

SCAN QR CODE
FOR MORE INFO



Serendipity BOOKS

"... [A] town isn't a town without a bookstore..."
Neil Gaiman, *American Gods*

See for yourself: There is an independent bookstore right around the corner in Chelsea.

(Having great theater is very nice too.)

Serendipity Books
108 East Middle Street, Chelsea
serendipity-books.com

Celebrating 100 years!

Merkel
FURNITURE AND CARPET ONE

f t p i
merkelfurniture.com




**When IT problems spring forth...
be prepared.**

UTEC it 
UTECIT.COM

CAST OF CHARACTERS



SARAB KAMOO (*Emma*) is so happy to be back at The Purple Rose where she is a Resident Artist. Her most recent productions here include *Smart Love* as well as playing Irene Adler in David McGregor's three original Sherlock Holmes plays. Other theater credits include: *Be Here Now* and Heather Raffo's one-woman show *9 Parts of Desire* at Williamston Theater; *Death of a Salesman* at Flint Repertory Theatre; *Comedy of Tenors*, and *Don't Dress for Dinner* at Tipping Point Theatre; *Dancing Lessons* at the Jewish Ensemble Theater; *Falling*, and *Luce* at Meadow Brook Theater; and *God of Carnage*, and *Sonia Flew* at The Performance Network. Sarab has also directed *Arabic to English* by David Wells at Theater Nova. Some film credits include: "Unseen", "Stone", "Happiest Season", "Rose for her Grave", "Conviction", "Trust", "The Giant Mechanical Man", "Secrets in the Walls", "Lovestruck the Musical" and episodes of "Chicago Fire", "Chicago PD", "Detroiders", and "Low Winter Sun". In addition to her acting, Sarab is also a part-time school social worker in the Rochester School District. She sends a huge thank you to Kate, Carey, Rhiannon, Jeff and Lucas as well as the amazing cast and crew that she has the privilege to play with every day! As always, she sends her never-ending love and gratitude to Tom, Grant, Joelle and Julia!



SONJA MARQUIS (*Sallie Ben*) is an actor, director, and sound designer from Brighton. She has worked with numerous theatres in southeastern Michigan, including Tipping Point Theatre, Williamston Theatre, The Dio, Flint Repertory Theatre, Encore Musical Theatre Company, Detroit Public Theatre, Performance Network, The JET, and Detroit's Music Hall, and is excited to return to The Purple Rose where she previously understudied the role of Mary in *Miles and Ellie*. Sonja has received multiple awards and nominations for her work, including Wilde Award wins for her portrayals of Rosie in *Mamma Mia*, Louise in *Always...Patsy Cline*, and Betty in *The Great American Trailer Park Musical*. When not on stage or part of a production team, Sonja loves helping to build the next generation of artists. Current projects with young artists include teaching sound design at Oakland University and directing plays and musicals at Brighton High School. Big thanks to Kate, Stef, Carey, Juji, Sydney, and the entire production team; enormous love to the WSF ladies (chosen bitches!); and smooches to Mike!



**TIPPING
POINT
THEATRE.**

SEASON 17

Subscriptions on sale soon!

GRAND HORIZONS by Bess Wohl

LITTLE WOMEN a new adaptation by Heather Chrisler

HALFTIME WITH DON by Ken Weitzman

ENGLISH by Sanaz Toossi

LUNGS by Duncan Macmillan

Be the **FIRST** to know about subscription and ticket sales by joining our email list!

We never sell or share this information - *promise!*

A square QR code located in the bottom right corner of the poster, used for linking to the email list sign-up.

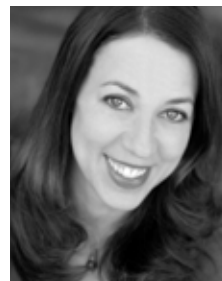


Thanks for over a decade
at the Purple Rose!

www.scarterphoto.com



PLAYWRIGHT



CAREY CRIM (*Playwright*) Carey is thrilled to be returning to The Purple Rose writing for these fearless women and working with this incredible director, designers, stage management and crew. Previous Purple Rose plays: *Growing Pretty*, *Wake*, *Some Couples May*, *The Spring Comedy Festival*, *Morning After Grace* and *Never Not Once*. The latter two have gone on to multiple productions both nationally and internationally. *Paint Night* (developed at The Purple Rose) recently premiered at The Public Theatre in Maine and is published by TRW. *23.5 Hours (Conviction)* was nominated for an Ovation award in LA for best new play and premiered at Bay Street Theatre starring Sarah Paulson. It will open in London this September at The Park Theatre. *The Islanders* opens in July at Shakespeare and Company. “Wake” is now a feature film starring Jo Koy, Myndy Crist and James Denton. Carey is a graduate of Northwestern University and represented by Mark Orsini at Bret Adams and Brandy Rivers at Amplified where she is developing the one-hour TV drama “Blessed” and the ½ hour dramedy “Triggered”.

Thank you to Jeff, Rhiannon, Lucas, Katie and The Purple Rose for the opportunity and the space to do new work. Love always to George and Eliana and gratitude to my Marco Polo women (L,R,S) for so much of this one!

The Encore
2024/25
 season
 main stage

WORLD PREMIERE!
new world comin' musical
 SEPT. 12-22 2024

BATBOY
 THE MUSICAL
 OCT. 10-20 2024

Annie
 DEC. 5-15
 JAN. 12-17 2025

Sense & Sensibility
 The Musical
 MICHIGAN PREMIERE!
 FEB. 27-15
 MAR. 16 2025

OSCAR WILDE'S
THE IMPORTANCE OF BEING EARNEST
 A Musical Comedy for Serious People
 STARRING FRED GRANDY
 APR. 24-30
 MAY 4 2025

LEONARD BERNSTEIN'S
WEST SIDE STORY
 JUNE 5-29 2025

THE ENCORE THEATRE
 THEENCORETHEATRE.ORG
 7714 ANN ARBOR ST. | 734.268.6200

Season Passes
 on sale
 NOW!

DIRECTOR



KATE THOMSEN (*Director*) joyfully returns to The Purple Rose Theatre Company for another world-premiere comedy. Prior PRTC credits include *Diva Royale*, *Pickleball*, *God of Carnage*, and *Vino Veritas*. She holds a BA from Western Michigan University and an MFA from University of California, Irvine. She is a Resident Artist at The Purple Rose, an Associate Professor for WMU's Theatre Department, and, just like the character Emma in *What Springs Forth*, proudly associated with Shakespeare Behind Bars. Deepest of thanks to the PRTC community for creating a place of magic, to the patrons for sharing time with us, and to the most supportive and silliest family she could imagine.

July 19-28, 2024
 Friday & Saturday at 7:30pm | Sunday at 3:00pm
 The hilarious comedy!
RUN FOR YOUR WIFE
 by Ray Cooney
 Directed by Lynn Wilde Concannon
 STARRING Dirk Brandt, Jon Gaskill, Mary Lukowski, Jackson Manning, Barry Marshall, Mike Olson, Lauren Olson, and Elaine Redel
 "Run for Your Wife" is presented by arrangement with Concord Theatricals on behalf of Samuel French Inc. www.concordtheatricals.com

August 15-18, 2024
 Thursday, Friday, Saturday at 7:30pm | Sunday at 3:00pm
KAYAK
 by Jordan Hall
 STARRING ANGELA DILL AND OLIVIA GOOSMAN
 A CELEBRATION OF THE HUMAN SPIRIT
 AND THE POWER OF NATURE TO CHALLENGE
 AND HEAL US ALL.

A Wilde Theatre
 "When anything can happen!"
 The professional theatre

Performances at
 111 S. West St.
 Brighton, MI 48116

Get Tickets
 All tickets are \$35
 www.awildetheatre.com
 Or call Lynn at 810.923.7705

K. EDMONDS (*Assistant Director*) You may have seen her here onstage in Jeff Daniel's *Roadsigns* (2019) and *Willow Run* (2018), but K is excited to be a part of this second show where she is on the production team at The Purple Rose! This multi-faceted artist has many director credits to her name including *In Common* here at The Purple Rose, *Nollywood Dreams* at Openbook Theatre, and the Obsidian Theatre Festival Detroit. K is also one of the instructors in rotation at the Detroit Repertory Theatre's Actor's Workshop, and teaches musical theatre to Metro Detroit youth with the after school program Goaline. She is also the co-founder of the Timbre Children's Chorus, a community choir housed at the Detroit Waldorf School in the Indian Village neighborhood of Detroit. K is an accomplished musician, writer, and award-winning director (Boxfest Detroit, 2011), an alum of The Second City Detroit, and holds a BFA in Digital Media Production from the International Academy of Design and Technology. K is thankful for the support from her mother, inspired by her daughter Kemistry, and in awe of the host of talented performers she has been blessed to work with throughout her career.

INTIMACY DIRECTOR & FIGHT CHOREOGRAPHER

ALEXIS BLACK (*Intimacy Director & Fight Choreographer*) is a fight, movement and intimacy director, performer, and theatre educator, and is thrilled to work with The Purple Rose again! She is a certified intimacy director and instructor with Intimacy Directors and Coordinators and an Assistant Professor of Acting, Movement and Stage Combat at Michigan State University. As a fight or intimacy director she has worked Off-Broadway, regionally and internationally (Europe and Asia) and on Broadway (most recently with 2022's *Macbeth*, starring Daniel Craig and Ruth Negga).

Favorite regional choreography credits include, *Rattlesnake Kate* at the Denver Center for the Performing Arts, *The Three Musketeers* for Birmingham Children's Theatre, and *Romeo and Juliet* at Shakespeare Theatre Company. Within Michigan, Alexis has also served as resident Fight and Intimacy Director for multiple summers at Hope Repertory Theatre, and choreographed fights and intimacy for Williamston Theatre, Detroit Repertory Theatre, Tipping Point Theatre and Flint Repertory Theatre, and is the Interim Artistic Director for Summer Circle Theatre in Lansing, Michigan. She was thrilled to work on PRTC productions, *In Common* (2023), and *The Antichrist Cometh* (2024). As a professional actor and member of AEA, she has worked with regional theaters, on international tours and Off-Broadway. She leads staged intimacy and staged violence workshops at universities across the U.S., and is the co-author of *Supporting Staged Intimacy: A Practical Guide for Theatre Creatives, Managers and Crew* for Routledge Publications (2022).

DESIGNERS

VICTORIA DEIORIO (*Sound Designer*) is happy to be making her Purple Rose debut! Off Broadway: *Dracula! A Comedy of Terrors*, *Nine Circles*, *Christmas Carol*, *Two Point Oh*, and others. Regional productions with: Oregon Shakespeare, The Goodman, Steppenwolf, Hartford Stage, Longwharf, Syracuse Stage, Indiana Rep, Gulfshore Playhouse, and many others. She built and headed the Sound Design program at DePaul University in Chicago where she worked for 35 years. She is forming a new AI audio company, and practices holistic health with sound therapy, massage therapy, and essential oils. For more info visit: bio.site/VictoriaDeiorio.

SARAH PEARLINE (*Scenic Designer*) has worked as a set and projection designer with such companies as Circus Flora, St. Louis Symphony, Experimental Theatre Wing, Titan Theatre Company, Prospect Theatre Company, SoHo Think Tank, Nickelodeon Networks, and NY Stage and Film. Sarah is an Associate Professor in the Theatre and Dance department at Wayne State University in Detroit. Locally, she has had a wonderful time working with Hope Summer Rep Theatre, Detroit Public Theatre, Carrie Morris Arts Production and PuppetArt Theatre, Satori Circus, and the DIA. As a Resident Artist here at PRTC, she previously designed *The Antichrist Cometh*, *In Common*, *Pickleball*, *Under Ceege*, *Roadsigns*, *Never Not Once*, *Willow Run*, *Harvey*, *Vino Veritas*, *Morning's At Seven*, and *Talley's Folly* and is so grateful to be back with the artists here for another magical show!

WHEN YOUR IMAGE IS ON STAGE...

turn to
Foresight Group
for a perfect performance



Print

Mail

Promos

Display Graphics

Signs

734.971.1700

5905 Jackson Rd.
Ann Arbor, MI 48103

www.foresightgroup.net

B BIGGBY COFFEE

UPLIFTING
THE PURPLE ROSE
THEATRE

Show this ad

& receive
FREE BOGO
specialty beverage
(hot, iced or frozen)

1171 S Main St • Chelsea

Good at this location only. Not good with any other offer. EXPIRES: 08/31/2024
CODE 657824117016
for franchise info www.biggby.com

Proudly supporting the arts!

Attorneys & Advisors to Businesses and Individuals Throughout Mid-Michigan Since 1901

Business Advising
Transactions & Litigation
Employment Counseling

Succession Planning
Bankruptcy & Collections
Estate Planning
Probate & Trust Services

Real Estate Law
Tax Issues
Non-Profit Organizations

Philip J. Curtis*
Brad A. Brelinski
Jeffrey T. Landon

Curtis Curtis Brelinski, P.C.
ATTORNEYS | EST. 1901

*Purple Rose Board Member for over 20 years

County Tower Building
120 W. Michigan Ave., Suite 1500
Jackson, MI 49201

517/787-9481

www.curtiscurtislaw.com

DESIGNERS

DANNA SEGREST (*Properties Designer*) has enjoyed being in the PRTC family since volunteering for our first production, *Blush at Nothing*. She became an Equity Stage Manager for *Shoe Man* by Jeff Daniels in 1991 and stage managed many shows while training some of the PRTC's first apprentices. Danna has designed Properties for almost all of our productions and now wears many hats as Resident Properties Designer, Resident Artist, Archival Photographer and Box Office Assistant. Danna is so happy to design the props once again for the production of a Carey Crim show. Carey's previous show *Paint Night* was so rudely interrupted on March 13th of 2020 but her current production of *What Springs Forth* will help us laugh our way out of this season! We have loved Carey since her first appearance on the PRTC scene in *Book of Days*. Thanks to Wade and Reeve for always being brave through the wilds for Danna and The Purple Rose!

NOELE STOLLMACK (*Lighting Designer*) Noele Stollmack's lighting has appeared onstage at The Brooklyn Academy of Music, Sydney Opera House, Carnegie Hall, The Library of Congress Theatre, as well as the opera companies of Santa Fe, Ontario, Houston, Portland, Vancouver, New Orleans, Nashville, Madison and Milwaukee. Regional design for the theatre includes Baltimore Center Stage, Cincinnati Playhouse, Houston's Alley Theater, Wisconsin's Chamber Theatre, Renaissance Theaterworks, Skylight Music Theatre, American Players Theatre, Forward Theatre, Next Act Theater, Peninsula Players and Milwaukee Repertory Theatre. Some notable examples of Noele's scenic realization and set design includes Meredith Monk's international tours of *mercy & impermanence*, *Giulio Cesare in Egitto*, *Albert Herring*, *Dido and Aeneas*, *Venus and Adonis*, *Rio de Sangre*, *Macbeth*, *Tristan und Isolde* and *Magic Flute* for the Florentine Opera, *Rape of Lucretia* at Toledo Opera, *Pagliacci* with Columbus Opera, and *Mirandolina* for the Milwaukee Rep. As Lighting Director for the Houston Grand Opera, Noele supervised the lighting for over 50 operas and designed such productions as Andrei Serban's *Elektra*, Dr. Jonathan Miller's *Der Rosenkavalier* and the world premieres of *Harvey Milk*, *Desert of Roses* and *Dracula Diary*.
Member: United Scenic Artists Local 829

*In Memory of
Anne Marshall,
who loved the
Purple Rose Theatre.*

Polly's Country Market

**Serving You Better,
Saving You More
Since 1934!**

1255 South Main Street
Chelsea, MI 48118
www.country-markets.com

734.433.0130

**Jackson's Leading
Source for News,
Information and
Entertainment. JTV is
Jackson TV.**



Watch JTV on Comcast, AT&T U-Verse,
WOW, Roku, Amazon Fire TV and
online at www.jtv.tv.



DESIGNERS

SUZANNE YOUNG (*Costume Designer*) is proud to be a Resident Artist at The Purple Rose and designed her first show for the theatre, *Escanaba in da Moonlight*, in 2011. She is delighted to return for *What Springs Forth*. Other Purple Rose designs include *A Jukebox for The Algonquin*, *Human Error*, the three *Sherlock Holmes* plays, *Under Ceege*, *All My Sons*, *Willow Run*, *33 Variations*, *The Spring Comedy Festival*, *Annapurna*, *Morning's at Seven*, *Welcome to Paradise*, and *Harvey*. Additional credits include Tipping Point Theatre, Michigan Shakespeare Festival, The University of Michigan, University Musical Society with *Some Old Black Man*, Wild Swan Theater, and Performance Network. Her work has been seen nationally in Boston, Connecticut and New York and internationally in the UK, France, Greece and Holland. She has had multiple Wilde Award nominations and was winner of Best Costume Design for MSF's *The Importance of Being Ernest* in 2014, Purple Rose's *Sherlock Holmes and Adventure of The Fallen Soufflé* in 2020 and for *Sherlock Holmes and the Adventure of the Ghost Machine*, in 2022. She has also been nominated for best costumes by Broadway World for the *Sherlock* plays and *Under Ceege*. Suzanne trained in London, England and has enjoyed a long career in costumes and costume design. She would like to thank the wonderful people at The Purple Rose for all their support and hard work and, of course, her husband and family.

SUBSCRIBE TO eNEWS

Receive Purple Rose news in your inbox: behind-the-scenes information, invitations to events, exclusive ticket discounts and more. Visit PurpleRoseTheatre.org

STAGE MANAGEMENT

STEFANIE DIN (*Stage Manager*) is thrilled to be part of this brand new production with such an amazing team! Since beginning her Equity career with The Purple Rose, Stefanie has become a resident Stage Manager at the Williamston Theatre, an Artistic Associate with, and the Production Stage Manager for The Michigan Shakespeare Festival, and the Tech Director/Tour Coordinator for their high school tours of *Romeo and Juliet* and *Macbeth*. She was also part of Central Michigan University's Theatre Department, and The Purple Rose Theatre's Apprentice Program. Stefanie is very happy to be working alongside old friends and new, and would like to give thanks to the higher ups for bringing her back, to Kate for her trust and incredible spirit, and to Syd and Juji for being in her brain. Special thanks to Tony for continuing to be an outstanding friend and mentor, to her extraordinary family and friends for their constant love and support, and to Brian and Keeley for being her inspiration every day. Love hard. Be kind. Always.

JULIANA BERRY (*Assistant Stage Manager*) graduated from Albion College in 2020 with a BA in Theatre and History. Her career at The Purple Rose Theatre Company began in the summer of 2022 as a Production Associate Swing for *Sherlock Holmes and the Adventure of the Ghost Machine*. Juliana was the Covid Safety Officer for *Pickleball*, a House Manager for *Human Error*, *In Common*, and *Diva Royale*, the Assistant Stage Manager for *A Jukebox for The Algonquin* and *The Antichrist Cometh*, and the Rehearsal Assistant Stage Manager for *Diva Royale*. Juliana played Bernice in the Chelsea District Library Reading of *Office Christmas Party*, *Grinch In Fight with Rudolph*, *Police Called* by Jeff Daniels. "I am proud to be a part of The Purple Rose Theatre Company. I've have learned and grown so much during my two years here. I am so lucky to work with such wonderful artists and our staff here at the PRTC. A special thank you to Rhiannon Ragland, Lucas Daniels, Carey Crim, Kate Thomsen, and to Jeff Daniels and our designers, for bringing this production to life. Thank you to my family and partner for supporting my dreams: Sean Pearce, Dan and Lisa Berry, Elizabeth Bauman, Elise Berry and Chuck LeCrone, Charlee LeCrone, and Victoria and Tom Carrio."

PRODUCTION STAFF

Assistant Stage Manager	Juliana Berry*
Director of Technical Production	Brian D. Dambacher
Scenic Painter	Seth Bowen
Scenic Painter	Sparrow Matthews
Scenic Painter	Alex Pordon
Assistant to Set Designer	Sparrow Matthews
Artistic Associate	Lucas Daniels
Artistic Associate	Rhiannon Ragland
Head Stage Technician	Caleb Wimbrow
Production Associate	Sydney Dillen
Production Associate	Eric Hohnke
Production Associate	Robert W. Hubbard
Safety Liaison	Lucas Daniels
Safety Liaison	Sydney Dillen
Patron Services Manager	Kate Voigt
House Manager	Marissa Matheny Allston
House Manager	Nathan Corliss
House Manager	Kelly Fielder
Box Office Associate	Lauren 'Wren' Griffin-Harrigan
Box Office Associate	Kathryn Hermann
Production Photographer	Sean Carter
Archival Photographer	Danna Segrest
Videographer	Robert W. Hubbard
Production Graphic Design	Daryl L. Fazio
Program Coordinator	Lexi Teuscher
Program Printer	Foresight Group

*member of Actors' Equity Association, the Union of Professional Actors and Stage Managers in the United States.

ACKNOWLEDGMENTS**

Chelsea District Library
 Cleary's Pub
 James Leaming
 Tulip Tree Gardens
 Waterloo Upholstery

**Please see program insert for additional acknowledgments.

FOUNDER & ARTISTIC DIRECTOR

JEFF DANIELS has been the Artistic Director of his career for forty seven years. Stepping into the role at The Purple Rose, he is giving his decades worth of experience to the talented artists who call The Purple Rose their creative home. Aside from his twenty two plays, all of which premiered here, Jeff directed the PRTC production of Lanford Wilson's *The Hot L Baltimore* (1997) and two of his own plays; *Boom Town* (1998) and *Diva Royale* (2023). On film, he wrote, directed, and starred in two independent features: "Escanaba in da Moonlight" (2001) and "Super Sucker" (2002), both shot in Michigan. In 1976, Jeff became a member of New York's Circle Repertory Company and over the decades appeared on Broadway in *Fifth Of July* (1980), *The Golden Age* (1984), *Redwood Curtain* (1993), *God Of Carnage* (2009), *Blackbird* (2016), and *To Kill A Mockingbird* (2018). He has been nominated for five Golden Globes, five Emmys (winning for "Newsroom" and "Godless") and three Tonys. "Alive And Well Enough", his audio memoir is available on Audible.com.

MANAGING DIRECTOR

KATIE HUBBARD is so pleased to be managing the business of The Purple Rose for the last 10 years. She previously lived in Milwaukee, WI and was the General Manager of First Stage, a professional children's theater that also houses the largest theater training program of its kind in the nation, as well as being Wisconsin's leader in arts-in-education programming. Katie hails from Rochester, Michigan and received her Bachelor of Arts in Theater from Albion College in 2002. She is also a graduate of The Purple Rose Apprentice Program and past AEA Stage Manager. Katie could not have this "dream job" without the love and support of her family. She is proud to be PURPLE.

ARTISTIC ASSOCIATES

LUCAS DANIELS will celebrate three years as an Artistic Associate here at The Purple Rose Theatre Company this September! He is very excited for this season as the PRTC will produce three productions instead of the usual four and for the first time ever, the stage will have seating in the round. This 2023/2024 season is all about comedy and will include a reboot of a Purple Rose favorite from 2018 and two World Premieres! Next up is our summer production, the World Premiere comedy, *What Springs Forth* by Carey Crim. Lucas is a graduate of Michigan State University, 2011 (Go Green!) and a graduate of The Purple Rose Apprentice Program, 2011/2012. He is a member of Actors' Equity Association and received his card in 2012, here at The Purple Rose. Lucas couldn't do this job without the love and support of his family. Love you so much, Shannon, Daphne, and Delaney.

RHIANNON RAGLAND has worn many hats at The Purple Rose over the years and is honored to be part of the Artistic Directing Team as Artistic Associate. A Flint, MI, native and proud member of Actors' Equity Association, she made her professional acting debut at 8 years old at the New Vic Dinner Theatre and then revived it as an adult right here at the PRTC in 2007. She then continued her artistic education by becoming a Purple Rose Resident Artist and a Teaching Artist for various Theatres, schools, and producing organizations throughout michigan. Rhiannon has worked as an actor in over 25 productions, and as a choreographer and a director helping stage more than 17 productions and winning Wilde Awards for her direction of *A Stone Carver* and *Pickleball* (Best Play). Special thanks to our Board, Jeff, Katie, Lucas, Amy, Rob, and Brian for your tireless devotion, creativity and leadership. And to her family, WokeD, Punk, ODawg and Nugget; I'm always inspired by you, thank you for continually building a life full of creativity and love. And to our audiences, Welcome Back, we hope you enjoy our story!

ADMINISTRATIVE STAFF & ARTISTS

Founder and Artistic Director	Jeff Daniels
Managing Director	Katie Hubbard
Company Manager	Amy Klain
Director of Technical Production	Brian D. Dambacher
Director of Donor Engagement	Robert Caplis
Artistic Associate	Lucas Daniels
Artistic Associate	Rhiannon Ragland
Chief Diversity Enrichment Officer	Lynch R. Travis
Donor Services Associate	Cyndi Bertoso
Head Stage Technician	Caleb Wimbrow
Production Associate	Sydney Dillen
Production Associate	Eric Hohnke
Production Associate	Robert W. Hubbard
Patron Services Manager	Kate Voigt
House Manager	Marissa Matheny Allston
House Manager	Nathan Corliss
House Manager	Kelly Fielder
Box Office Associate	Lauren 'Wren' Griffin-Harrigan
Box Office Associate	Kathryn Hermann
Box Office Assistant	Danna Segrest
Social Media Content Consultant	Caitlin Cavannaugh
Marketing Associate	Lexi Teuscher
Bookkeeper	Sharon Pedersen
Handyman	Jon Bennett
HR Firm Partner	VentureHR
Janitorial Services	Think & Do Partners LLC
Playmakers Playwrights	Jeffrey Chastang • Carey Crim • Jeff Daniels Jeff Duncan • Quinn D. Eli • Rachel Keown • Brian Letscher • Matt Letscher David MacGregor • Julie Marino • Lauren (Knox) Mounsey • Eric Pfeffinger Megan Pinto • Alvaro Saar Rios • Paul Stroili • Lanford Wilson
Resident Properties Designer	Danna Segrest
Resident Artists	Sandra Love Aldridge • Connor Allston • Bartley H. Bauer David Bendena • Jon Bennett • Ryan Black • Caitlin Burt • Ryan Carlson Caitlin Cavannaugh • Mark Colson • Susan Craves • Ruth Crawford Carey Crim • MaryJo Cuppone • Brian D. Dambacher • Ben Daniels • Jeff Daniels Lucas Daniels • Rainbow Dickerson • K. Edmonds • Henri Franklin Dana Gamarra • Katie Hubbard • Robert W. Hubbard • Reid G. Johnson Michael Joseph • Sarab Kamoo • Angie Kane • Angela G. King • Amy Klain Brian Letscher • Matt Letscher • Alex Leydenfrost • David MacGregor Hugh Maguire • Randolph Mantooth • Richard McWilliams • Rusty Mewha Angela Kay Miller • Lauren (Knox) Mounsey • Michelle Mountain Vincent Mountain • Reina Mystique • Shelby Newport • Aphrodite Nikolovski Scott Norman • Wayne David Parker • Sarah Pearline • Brad Phillips Jim Porterfield • Rhiannon Ragland • Suzi Regan • Dawn Rivard Maria Ru-djen • Stephen Sakowski • Danna Segrest • John Seibert Kristin Shields • Noele Stollmack • Paul Stroili • Kevin Theis • Kate Thomsen Matt Tibbs • George Till • Lynch R. Travis • Meghan VanArsdalen • Dez Walker Jonathan West • Dana L. White • Suzanne Young • Will David Young
Accounting Services	Sinelli & Associates

"Where the Home Begins"



chelsealumber.com

3 locations to serve you:

Chelsea | Saline | Bridgewater

Enjoy the Show!

LET US BE YOUR HERO
JOIN OUR UNIVERSE



print-tech

. commercial offset . digital color . mailing services
. online storefront services . storage & fulfillment
. signs, banners, displays . advertising specialties



Ally

Leigh

BJ

Margaret

Hillary

734.996.2345 | 6800 Jackson Rd, Ann Arbor MI | www.printtechinc.com



LA JOLLA FINE JEWELRY

111 SOUTH MAIN ST. • CHELSEA, MI 48118 • 734-475-0717



Bob Fox,
Associate Broker
AND FLO!

CALL BOB.

Craving a new view?
Call Bob.

Looking to sell your home?
Call Bob.

Need a large yard for the dog?
Call Bob.

Whatever your real estate needs
are — you can count on Bob Fox
to answer the call.

You could say...
real estate is kind of his thing.

Howard Hanna

Real Estate Services

145 E Chicago Blvd, Tecumseh
517-605-5206 | howardhanna.com

THE ONLY TOP-RANKED HOSPITAL IN MICHIGAN

**BEST
CHILDREN'S
HOSPITALS**

U.S. News & WORLD REPORT
ORTHOPEDICS
2023-2024

M | C.S. MOTT CHILDREN'S HOSPITAL
UNIVERSITY OF MICHIGAN HEALTH



We love Chelsea!

Building Financial Wellness in the communities we serve since 1950.

BEST-IN-STATE CREDIT UNIONS | **Forbes 2023**
POWERED BY STATISTA

Chelsea Branch *Inside Country Market*
1255 South Main St. Chelsea, MI

US12 Chelsea Branch
12855 Old US 12 E - Suite 7

*Visit american1cu.org for full details!
Federally Insured by NCUA | Equal Housing Opportunity

Amer1can
CREDIT UNION

Boldly Generous. Convenient. Uncomplicated.

american1cu.org | (888) 213-2848



Enroll today!

734-475-3070
www.balletchelsea.org

ballet | point | jazz
tap | hip hop | contemporary
adult ballet and more!

ballet chelsea




Silver Maples is *Our* Choice

AWARD WINNING SENIOR LIVING SERVICES

Engaging programming, delicious meals and convenient services designed to keep you happy, healthy and connected. This is what you'll find at Silver Maples. You'll feel the difference the moment you walk in the door.



SILVER MAPLES
of Chelsea
RETIREMENT NEIGHBORHOOD

www.silvermaples.org • 734-475-4111  

Locally-Owned, Non-Profit Jointly Sponsored by 5 Healthy Towns Foundation and Silver Maples Inc.

IT'S (ALMOST) SHOWTIME.

2024-25 SEASON

FLEX SERIES



FEATURING:

JULIUS CAESAR
by William Shakespeare
9/26-10/6 | Arthur Miller Theatre

JOHN PROCTOR IS THE VILLAIN
by Kimberly Belflower
11/21-11/24 | Lydia Mendelssohn Theatre

A FEW GOOD MEN
by Aaron Sorkin
2/20-2/23 | Power Center

OUR OZ
devised by José Casas & Jake Hooker with student ensemble
4/3-4/13 | Arthur Miller Theatre

JOIN OUR MAILING LIST FOR THE LATEST NEWS!

SMTD.UMICH.EDU/SHOWTIME

M | MUSIC, THEATRE & DANCE




Cleary's Pub
113 S Main, Chelsea
Burgers, Pizza, Pastas & More
www.clearyspubchelsea.com

We value
the arts in our
communities and
proudly support
our neighbors.

WE ARE HENRY

HENRY FORD HEALTH

henryford.com

A GOOD MAN DIED FOR THIS.

WELL, IT *IS* AMAZING
SPIDER-MAN ISSUE #5...

COMICS • STAR WARS UNLIMITED
BOARD GAMES • LORCANA • POKEMON
MAGIC THE GATHERING • MANGA

 **SECRET CRISIS COMICS**

SECRETCRISISCOMICS.COM • 1165 SOUTH MAIN STREET, CHELSEA • 734-593-7110

OWNED & OPERATED BY
RICHARD & DOUGLAS POST
SINCE 1987



Decks • Fences • Sheds • Porches
[www. R-D-Enterprises.com](http://www.R-D-Enterprises.com)

DOUG@R-D-ENTERPRISES.COM

Culture Creations



We travel the world so you can, too.

Unique gifts and items
from artists around the world.

Bring in your Purple Rose
tickets for a FREE GIFT!



118 South Main Street
Chelsea, MI 48118



PROUD TO SPONSOR

THE PURPLE ROSE
THEATRE



MICHIGAN
ARTS &
CULTURE
COUNCIL

www.michigan.gov/arts

JOIN THE CONVERSATION



find us on Facebook!
www.facebook.com/PurpleRoseTheatre



find us on Instagram!
<https://www.instagram.com/purplerosetheatre/>



watch us on YouTube!
www.youtube.com/user/PurpleRoseTheatreCo



Great Food, Craft Beers & Fun!
Now Serving Brunch
Banquet Rooms
Open Six Days A Week

ArcticBreakaway.net
Follow Us on Facebook

734.475.9999
Delivery Now Available
501 Coliseum Drive, Chelsea, MI 48118

WHAT SPRINGS FORTH

by Carey Crim

Additional Program Information

Understudies

Understudies never substitute for listed characters unless a specific announcement for the appearance is made at the time of the performance.

Robyn Maria Ru-djen*
Sallie Ben Susan Craves*
Emma Teri Clark Linden*
Malou Teri Clark Linden*

*Member Actors' Equity Association, the Union of Professional Actors and Stage Managers in the United States

This performance of *What Springs Forth* contains the use of water-based haze.

Additional Acknowledgments

Chelsea Chiropractic
Gary Ciarkowski
FarmSudz Chelsea

WHAT SPRINGS FORTH

by Carey Crim

At this performance, the role of
Robyn
will be played by Maria Ru-djen*.



MARIA RU-DJEN is a very proud member of Team Understudy and is delighted to be working with The Purple Rose for her sixth production. Beginning with *Mornings at Seven* in 2016, Maria has understudied for *Vino Veritas* (as Kate Thomsen's understudy!), *All My Sons*, *Sherlock Holmes and the Adventure of the Ghost Machine*, and last summer's *A Jukebox for The Algonquin*. She has been an appreciative participant in Box Fest Detroit, and in the Snapshots Storytelling events sponsored by PencilPoint Theatre. Most recently, she played Mama in the Lakeside Theatre's production of *I Remember Mama* in Toledo and was also in their inaugural production of *The Heiress*. Many, many thanks to the entire production team and staff at the Rose and to her family for their unending support.

*Member, Actors' Equity Association

WHAT SPRINGS FORTH

by Carey Crim

At this performance, the role of
Sallie Ben
will be played by Susan Craves*.



SUSAN CRAVES is tickled pink to be back at The Purple Rose Theatre! “Thank you Rhiannon, Lucas, and Kate for inviting me to play in my favorite sandbox. Thank you to my friends and family who are reading this. Y’all are the ‘Bee’s Knees!’” Susan is a Michigan based actor, a Resident Artist here at The Purple Rose Theatre Company and she is a proud member of, Actor’s Equity Association. Regional Theatre acting credits (select): *Steel Magnolias*, *Harvey*, *All My Sons*, *God of Carnage*, and *Morning’s at Seven* (PRTC) and *Ripcord* (Tipping Point Theatre). In the fall of 2023, The Public Theatre of Maine, cast Susan in the World Premiere of *Paint Night* by Carey Crim. Regional Theatre directing credits (select): *Doubt*, *Steel Magnolias*, *Calendar Girls*, *One Slight Hitch*, *The Savannah Sipping Society*, *Sex Please We’re Sixty* and *Enchanted April*. “To my Adia, Kyle, and Charles, Te quiero mucho.”

*Member, Actors’ Equity Association

WHAT SPRINGS FORTH

by Carey Crim

At this performance, the role of
Emma/Malou
will be played by Teri Clark Linden*.



TERI CLARK LINDEN is glad to be back! Past PRTC shows (also World Premieres) include *Hope For Corky*, *Duck Hunter Shoots Angel*, and *Leaving Iowa*. Selected regional: *Reindeer Sessions* (World Premiere), *A Christmas Story* (Human Race), *Kong’s Night Out*, with Laverne & Shirley’s Cindy Williams (Meadowbrook), *One Flea Spare* (ATL Humana Festival), and many Chicago stages including Court, Piven, and Bailiwick. Favorite Shakespeare roles: Rosalind, Helena, and Margaret. Selected TV/Film: “American Rust” (Amazon Prime), “Bad Guardian” (Lifetime), “Archive 81” (Netflix), “Dark Waters”, “Unsinkable”, “I See You”, “Aftermath”, “Super 8”, and “Jack Reacher”. Narrated audiobook titles available on Audible. Proud AEA member. Instagram @tericlarklindenitsme Go Tigers! Dave/Sam you are my light.

*Member, Actors’ Equity Association

**SEASON TICKETS
ON SALE
NOW**

ALL SIX \$158 ADULT
\$134 S/Y/M

PICK FIVE \$140 ADULT
\$119 S/Y/M

PICK FOUR \$118 ADULT
\$100 S/Y/M

tca Tecumseh Center for Arts
Shirley Todd Herrick Theater

400 N. Maumee St. Tecumseh, MI
517.423.6617 | TheTCA.org



KRISTINA KOLLER
TRIO



THREE MEN
AND A TENOR



TCA COMEDY SHOW
GREG MORTON



CHARLOTTE
BLAKE ALSTON



MONDAY'S
SUPPER



THE JASON
BISHOP SHOW

TIBBITTS.org
Coldwater, MI
517.278.6029

**PROFESSIONAL
SUMMER THEATRE**

**2024
SEASON**

SWEENEY TODD
The Demon Barber of Fleet Street
June 27-29, July 3, 5-6

RENT
July 11-13, 17-20

**OVER THE RIVER
AND THROUGH
THE WOODS**
July 25-27, 31, Aug 1-3

Get Your
Tickets Today!




STATESIDE

If It Matters
To Michigan,
You'll Hear It
On *Stateside*

Stateside with April Baer,
Michigan's daily statewide talk show.

Mon-Fri at 3 p.m. and 10 p.m.




**MICHIGAN
RADIO** npr

MICHIGAN'S NPR NEWS LEADER
91.7 FM Ann Arbor/Detroit



BOARD OF DIRECTORS

David Larsen- Board Chairman
 Charles Craves & Maria Leonhauser- Vice Chairmen
 David Ligotti- Treasurer
 Charles Eisendrath- Secretary

Peter Brown Sheila Ford Hamp
 Philip J. Curtis Steven K. Hamp
 Aaron P. Dworkin Dr. Ying Li, M.D.
 Peter Feeney George Moses
 Martha Fuerstenau John J. H. Schwarz, M.D.

PAST BOARD MEMBERS

Judy Dow Alexander, Betty Jean Awrey, *Gail Bauer, Paul Boylan,
 *David A. Brandon, Anne Colone, John Colone, Craig Common,
 Jill Corr, *Jeff Daniels, Honorary Melissa Sage Fadim, *Ann Feeney,
 *Patrick Freydl, Ruth Roby Glancy, Doug Graham, H. Ron Griffith,
 Sanjay Gupta, M.D., Neil Hawkins, *Richard Helppie, Peter Heydon,
 *William B. Holmes, Atanas Ilitch, Marcia J. MacCready, John Mann,
 Paul Martino, William Michels, Timothy L. Nasso, *Michael Novak,
 *JoAnne Rosenfeld, Ben Upton, Ambassador Ron Weiser,
 Dawn Williams, Dr. Steve Yarows

*designates past Board Chairpersons; +deceased

A MESSAGE FROM THE BOARD OF DIRECTORS

From the beginning, The Purple Rose Theatre Company has aspired to be the beacon of American theatre. Founded in 1991 by Jeff Daniels, our mission has been to develop opportunities for theatre professionals while entertaining, enriching and building a loyal following. Audience commitment to the company has resulted in a fiscally solvent and highly respected arts and community partnership.

The PRTC envisions an even brighter future with increased national visibility and enriched economic and artistic health. Well-established and critically acclaimed, The Purple Rose Theatre Company will continue to be the home of world-class, original American theatre.

The Purple Rose Theatre Company is a member of the Ann Arbor/Ypsilanti Regional Chamber, Arts Alliance, Greater Brighton Area Chamber of Commerce, Chelsea Area Chamber of Commerce, Culture Source, Dexter Area Chamber of Commerce, Greater Jackson Chamber of Commerce, and Saline Area Chamber of Commerce.

Actors' Equity Association (AEA) was founded in 1913 as the first of the American actor unions. Equity's mission is to advance, promote and foster the art of live theatre as an essential component of our society. Today, Equity represents more than 40,000 actors, singers, dancers and stage managers working in hundreds of theatres across the United States. Equity members are dedicated to working in the theatre as a profession, upholding the highest artistic standards. Equity negotiates wages and working conditions and provides a wide range of benefits including health and pension plans for its members. Through its agreement with Equity, this theatre has committed to the fair treatment of the actors and stage managers employed in this production.

AEA is a member of the AFL-CIO and is affiliated with FIA, an international organization of performing arts unions. For more information, visit www.actorsequity.org.

DIVERSITY, EQUITY & INCLUSION

The Purple Rose Theatre Company is taking actionable steps to provide and increase opportunities for marginalized artists and theatre makers. We are working with our staff, artists and patrons to create, live, and behave in ways that will respect and represent the wide diversity of souls who call the Midwest home.

The Purple Rose Theatre cares about the well-being of our artists, staff, patrons, and volunteers and is committed to diversity, inclusion, equity, and anti-racism. We can do more. And we are.

We are committed to leading with positive action and want everyone committed to our organization to join us.

Visit www.purplerosetheatre.org/dei/ for more information.

VOLUNTEERS NEEDED

THEATRE USHERS

As a non-profit theatre, we rely on the generosity of others to help us carry out our efforts. The Purple Rose welcomes volunteer ushers throughout the season. This is a wonderful way to help the theatre and also see a show for free!

Please call the Box Office at 734.433.7673 or email Tickets@PurpleRoseTheatre.org and we will send you our Volunteer Usher Inquiry Form.

A SPOTLIGHT ON DEVELOPMENT THE PURPLE ROSE GANG



The Purple Rose Gang is our multi-year giving club at the PRTC. This special “Gang” is comprised of donors who have made a minimum three-year pledge of \$10,000/year.

Members of The Purple Rose Gang to date are:

David A. Brandon Foundation
Peter Brown & Maria Leonhauser
Dick Caldarazzo & Eileen Weiser
Craig & Donna Common
Philip J. Curtis
The Feeney Family
The Hamp Family
Annmarie & Neil Hawkins
Richard & Leslie Helppie
William B. Holmes Family
Tom & Debby McMullen
Peter & Carol Walters
Ambassador Ron Weiser & Barrie Bender
Jeff & Dawn Williams

For more information on how you can become a member of The Purple Rose Gang, please contact:

**Director of Donor Engagement,
Robert Caplis, at 734.433.7782 ext. 108**

THE **PURPLE ROSE** THEATRE COMPANY
INDIVIDUAL GIVING

YOUR GIFTS AT WORK!



\$100 a playwright fee for one workshop
\$250 special effects for a single show
\$500 cost for set, prop or costume maintenance for a play
\$1,000 professional design expenses for a production
\$5,000+ sponsorship for a PRTC production
\$10,000+ Purple Rose Gang sustainers

Annual donations of \$250+ qualify for Priority Booking, where donors can purchase tickets two weeks before the general public.

The Purple Rose Theatre Company
137 Park Street
Chelsea, MI 48118
734.433.7782

donate@purplerosetheatre.org
Tax ID / FEIN 38-2946466

The PRTC is a 501(c)(3) federally tax-exempt, Michigan non-profit organization.
Your donations are tax deductible to the maximum allowed by law.

Thank You For Your Support!

*Annual Gifts/Pledges reflected below were received between:
May 15, 2023 - May 15, 2024*

MAJOR BENEFACTOR CIRCLE
(Gifts of \$25,000 and above)

Anonymous
Dick Caldarazzo & Eileen Weiser
Community Foundation for Southeast Michigan
Philip J. Curtis
Jeff & Kathleen Daniels
McKinley Associates, Inc.
The Shubert Foundation
Ron Weiser & Barrie Bender
The Matilda R. Wilson Fund

PREMIERE CIRCLE
(Gifts of \$10,000 to \$24,999)

Anonymous
Ieva Berglands
Peter & Patti Feeney
Grand Rapids Community Foundation*
Steve & Sheila Hamp
Richard & Leslie Helppie
Michael & Jane Hourani
Denise Ilitch
Maria Leonhauser & Peter Brown
The Martin Family Foundation
Michigan Arts and Culture Council
National Endowment for the Arts
The Rabbinhood Fund
David & Deborah Schaible

**Endowment Support*

(continued)

PRODUCER CIRCLE

(Gifts of \$5,000 to \$9,999)

Tim & Tracey Baele
Jim & Debbie Beuche
The F. Ross Birkhill and Laura Jean Birkhill Family Foundation
Jack & Susan Carlson
Chelsea State Bank
Cleary's Pub
CMRG
Chuck & Susan Graves
J. Marc & Juliana Feeney
Michael Feeney
Drs. Ying Li & Oliver Varban
Lume Cannabis Co.
Tom & Debby McMullen
John Merrifield
Daniel & Kathleen Nickodemus
Don & Pat Paulsell
Secret Crisis Comics
Kalpana Shanmugham & James Hamilton
Rick Taylor & Shelley Castor Taylor
Bob & Susie Ufer
Willis and Jurasek, P.C.

PATRON CIRCLE

(Gifts of \$2,500 to \$4,999)

Dwight & Lucile Aldrich
Ann Arbor Area Community Foundation
Anonymous -in memory of Doug & Sue Amacher
Robert & Mary Baird
William Cabin & Susan Havens Lang
Willard R & Lucile W Cowan Charitable Trust
DTE Foundation Fund
Charles & Julia Eisendrath
Gaynell Fausell Charitable Trust
Martha Fuerstenau
David & Celia Larsen
Herbert & Karla Linkner
Paul Loffreda & Darlene Sladewski
Ted & Cynthia Mickevicius
Carol Mohrlock
Chelsea District Library
Camille Procassini
Baiba Rahn
Ken & Bonnie Shay
Kathleen Siegel
Marcus & Dia Vale
Donny Vendittelli
Jeff & Amy Voigt
Weber's Boutique Hotel
Wyn & Hal Wendelken
Josie Wojtowicz & Randy Fotiu

(continued)

ARTISTIC DIRECTOR CIRCLE

(Gifts of \$1,000 to \$2,499)

David Barnes & Deborah Landenheim	Ed & Kathy Silver
Patricia Brainard & Scott Tatro	Dr. Brandi Soldo
Jason Brown	William & Andrea Stickney
Pamela Brown	Patricia Swaney
Charles & Kathy Budd	Caren Thompson
Ronald T. & Millie Burkman	-in memory of David Thompson
Robert Caplis	Doug & Susan VanArsdalen
Chelsea Community Foundation	Eric & Amy VanHevel
Monique Coffman	Douglas Weaver & Judy St. Romain
The Crazy Diamond / The Devil's Haircut	Brad & Arlene Wilkinson
Aaron & Michelle Crumm	Bill & Pam Wood
Jodi Daniels	Douglas Wood & Kay Holsinger
The Detroit Lions Foundation	J.D. & Joyce Woods
Vincent & Fran Dow	
David & Joanne Duff	
Todd & Julie Dziobak	
Ed & Jennifer Engle	
Marjory Winkleman Epstein	
-in memory of Donald Robert Epstein	
The Mark A. Frank Family	
Scott & Noel Galeski	
Charles & Rita Gelman	
Larry & Sarah Grace	
Thomas & Lee Gravelyn	
Ann Groves	
-in memory of Bill & Betty Groves	
Carl & Sylvia Hansen	
The Mabel Harris Trust	
Jeff Holzhausen	
Doreen Jackson	
Willard H. Johnson & Diane Kurtz	
Jim Keller & Mary Ellen Hoy	
David & Judy Konst	
Patrick Lane & Ashley Wickett	
David Ligotti & Karen Quenneville	
John Luce	
Nora Lusk	
Patrick & Lisa McClear	
Lee & Marge Meserve	
John & Elizabeth Moje	
Daniel Moons & Antoinette Pilzner	
Doug Neilson	
Lenore Orlowska-Warren	
Mark & Jennifer Pinto	
Tom & Carol Postma	
Ann & Lou Raden	
The Schachinger-Ulin Family Charitable Fund	
Steve Sheldon	
-in memory of Anne Marshall	



(continued)

PLAYWRIGHT CIRCLE

(Gifts of \$250 to \$999)

Terris & Monica Aherns
Darryl & Sharon Allen
Bob & Marilyn Amano
Joan A. Ambs
American 1 Credit Union
Gretchen & Tom Anderson
Harry Anderson, III
Diane Andrasik
Anonymous
Carlo & Donna Apollinari
Robin & Bradley Axelrod
Duane Balinski
Shelly Banet
John & Virginia Bareham
Laura Barkovich
Alan & Lonna Baum
Claude & Clare Baxter
Gary Beck
Jim & Marlene Beck
-in memory of Joseph K. Piasecki
Lisa & Scott Belanger
Miriam Bergman
Marcia Binkley
Todd & Penny Blackburn
Tom Blaske
Clara & John Bohrer
Dr. Mark Bortolussi & Jennifer Caplis
Carol Boudeman
Dr. K. Page & Kathleen Boyer
Kenneth Boyer & Suzanne Tainter
Lance & Sharon Boylan
Linda & William Bozgan
Craig & Bev Brass
Terry & Kathy Brennan
Deron & Anne Brod
Diane Brown
Douglas & Karen Brown
Margaret Brown
Kimberly Browning
James & Janet Bruss
Ronald Burnard
Irene & William Bushaw
Megen Cagney
Margaret & James Campbell
Karson & Alma Carpenter

Kathy Carter & Mack Ruffin
Sharon Castle
Catrec Restoration
Scott Chaiken
John & Jaye Chandler
Matthew Chapel
John & Kathryn Charpie
Nanciann Cherry
Martha Clapsaddle
Brian & Cheryl Clarkson
Meridith Cole
Anne Colone
Barbara Colwell
Connie & Jim Cook
James M. Cook
Nancy Cooper
Kevin & Pat Corr
Mort Crim
Walter & Sally Cytacki
Nancy Dean
Catherine Decker
Tom Denhof & Sarab Kamoo
Dennis & Julie Deppner
Sally & Fred Dickinson
Patrick & Robin Dickson
Darlene Domanik & Gary March
Geraldine Downes
Scott Droskie
B. Kenneth Duck & Mary E. Gallagher
Gavin Eadie
David & Roxanne Eby
Kath & Greg Edwards
Bill & Sharleen Eisenbeiser
Cynthia Erickson
David Erickson
Cheryl Farmer & Dennis Barksdale
FarmSudz
Katherine Hilboldt Farrell
Liz & Sam Febba
Thomas & Leona Feluk
Robert Fidler
James Finzel
Connie Fliege
Fonville-Shoemaker Family Foundation

(continued)

PLAYWRIGHT CIRCLE

(Gifts of \$250 to \$999)

Saul & Helen Forman
-in honor of Kate Voigt
Randall & Christine Forsch
Robert & Diane Fox
Perry & Casey Francis
Elaine Garcia
Kim & Diane Gasior
Jim & Candy Gildea
David & Maureen Ginsburg
John & Patricia Glidewell
Steven Goldberg
Rick Golden
Brenda Goodman
Ron & Laura Gordon
Scott Gordon
Joanne & Ted Gray
The Gray Family
Robert H. Gray & Susan M. Smith
Deborah Green
Judith Green
Traci Greenlee
Gregory & Deborah Griffin
Marion & David Griffiths
Thomas Gunn
Kelley Guthrie
Mark Guzdia
Steve Garagiola & Carol Hackett Garagiola
Kirsten Hallstrom
William & Claudia Hamel
Larry & Susan Hannon
Susan & Randy Hardy
Larry Harper
Woody & Susan Harrington
Julie Harris
Martha Hashimoto
Tara Haske
Marita Hattem-Schiffman
Ann & Michael Hause
Fred & Sarah Hawley
Ross Hemphill
Gretchen Hennen
Betty Hill
Richard & JoAnn Hirth
Peg Hoblack
James & Sharon Hobson

Joel & Kathy Hoffman
Michael & Nancy Hollerbach
Catherine Hoolahan
Katie & Rob Hubbard
Elizabeth Huldin
Dennis Irish
Lee Johnson
Lori Jordan
Wendy & Kent Kanipe
Kevin Kaufman
Amy Kelly
Sally Kennedy
Heidi Kind
Stephen Young & Tricia Kinley
Cecilia Kloecker
Steven & Mary Knickerbocker
Julie Koss
Emily Kowalski
Kimberly Kyro
David & Mary Laidlaw
Joey Deni-Lambert & Chuck Lambert
John Langmore
Geraldyn Lasher
Bruce & Janet Lillie
John Liskey
David Lloyd
Gerald Logan
Elizabeth Long
Neil Lucas
Susan Lucci
Diane Lusk
Thomas Madden
Srikanth Maddipati
Dennis Maloney & Anthony Driver
John & Anne Mann
Steve & Sue Manville
David Marold & Sheila York
Irwin & Fran Martin
Marjorie & David Mastie
Terri & Richard McCalla
Dan & Melissa McCance
Betsy McCluskey
Pat & Griff McDonald
Barbara McEwen
Karen McGowan

(continued)

PLAYWRIGHT CIRCLE

(Gifts of \$250 to \$999)

Craig McKee
Nancy Meddaugh
Steve & Rhonda Melchi
Bob & Debbie Merion
Angie Merkel
David Merkel
Kathy Merrill
Laurie Mesko
The Metzger-Therrien Family Foundation
Angela Milad
Robert & Shelagh Miller
Robert Miller
Ken & Joanna Milne
Nancy & Richard Monk
Gerald & Kathleen Moore
Karen Morris
Melanie & George Moses
William & Jeanne Nance
Don Nelson
Robert & Karen Niedzielski
Ken & Betsy Nisbet
Janet & Mark Nisbett
Cherie Nixon
John & Lexa O'Brien
Carolyn & Kevin O'Keefe
Roseanne Oliverio
Keith Outland
Lowell Overmyer
Robert Padget
Scott Page & Jenna Bednar
Margaret Palmer
John & Mary Parker
Dale & Deborah Parus
Carol Payne
Eric Peterson & Kristin Langellier
Barbara Petoskey & James Salay
Max & Sherri Plank
Cheryl Pond
Debbie Porter
Karen Porter
Robert Posler
Sharon Presti
Jim Preston
Richard Price
Kirk & Sharon Profit

Kathy Proper
Paul & Barb Purdue
Rebecca Quintana
Joanne Randall
Suzi Regan & Bill Wilt
Timothy Richards & Constance McGuire
Patrick & Mary Roche
Mark & Kathy Roeser
George Alter & Elyce Rotella
Faye Rowland
Anne Ruch
Deborah Salzberg & William Treharne
Virender Sandhu
James Sansone
Tim Sawmiller
Benjamin Schafer
Thomas Schlachter
Fred & Diane Schmid
Gina Schremser
Mary Schudel
Aileen Schulze
Ronald Schumacher
Ruth Ann & Michael Schwarz
Devin & Corey Scillian
John & Cynthia Secrist
Maria Serras
-in honor of Dave Ligotti
Connie & Bob Sfere
Candice Shavalia & David Strauss
Marc Shaye
Brenda Shea
Dennis & Carolyn Shephard
Richard Sherburne
Scott Meves & Kristin Shields
Thomas & Mary Kay Shields
Jean & Thomas Shope
Bill Shroeger
Sharon & Peter Silveri
Joan Simon
Mallory Simpson & Gregory Schatzle
William Sirois
Victoria Sistek & Matthew Burke
Brooks Sitterley
Michael Slusarski

(continued)

PLAYWRIGHT CIRCLE

(Gifts of \$250 to \$999)

April Smith
Channing & Lori Smith
Linda Smith
Dale Sniegowski
Darrell Snygg
Gabrielle Southwell
Chad & Linda Spawr
Spencer Ann Arbor
Jeff Spindler
Jim & Gwynn Sterken
Eric Sternberg
Jeff Stoller
James Stroehmann
Derek Strong
Dennis & Jan Sullivan
Randall Sung
George & Julie Sutton
Reid Thebault
Rob Thomas & Angie Cesere
Ayse Tobey
James & Frances Trask
Claire Turcotte
Ugly Dog Distillery
Hans Ullmer
Karl Van Harn & Joanna Bailey
James & Penny Van Vlerah
Christopher Varner
Kathleen Vertin
John & Lynn Vinkemulder
Susan Wacksmuth
Walter Ward
Karen Waselewski
Hal & Ruth Wattles
Lorraine Webb
Karl & Karen Weick
Sandra & Thomas Weimert
Neal & Susan Weinberg
Sandra Weintraub
Susan & Mark Wellman
Robert Wendt & Judith Pheatt
Susan & Peter Westerman
Carol Westfall
George S. White & Lynda Allen
Barbara Wiese
Deb Wiese

The Wilkinson Foundation
Tim & Linda Willibey
Lee Willwerth
Friedelle & Jack Winans
Jackie Wood
Karen Wood
Michael Worthing
Steve & Dayle Wright
Susan Zake
Stephen & Jane Zawistowski
Steven Zuccarini
Jeanne Zurich
Susan & David Zurvalec



(continued)

CAST CIRCLE

(Gifts of \$100 to \$249)

William & Gay Adams
 Terry & Cindy Ahern
 Maureen Alterman
 Rich & Becky Altschuler
 Joe Amato
 David Asch
 Rosemary Austgen
 Thomas & Toni Babineau
 Kathleen Perlberg
 Robert & Joanne Barhite
 Linda Barry
 Henry & Molly Bazydlo
 Michael Behan
 Dennis Behrendsen
 Mark Bennett
 Nicole Bhawe
 Margaret Bird
-in memory of Leeds Bird
 Jean Birkhill
 Frank Borchetta
 John & Leora Bowden
 Mary Jane Bower
 James Brandon
 Jim & Robbie Brandstatter
 Carol Brody
 Howard Brooks
 Robin & Michael Brooks
 Dickson Brown
 Phil Bryant
 Carrie Buss
 James Byrd
 John Casey
 Kenneth Chamberlain
 Albert Chambers
 Martha Child
 Kaaren L. Christopherson
 Gary Ciarkowski*
 Larry & Jennifer Coates
 John Cole
 Jim & Meg Costello
 James A. & June E. Coyne
 Ann Crane
 R.W. & Peggy Cronenweth
 Marylee Dalton & Lynn Drickamer
 Ben & Amanda Daniels
 Mark & Diane Davies
 Thomas & Jean Davis
 Matthew DeLand
 Gene & Barbara Dickirson

*Endowment Support

JoAnn & Richard Dionne
 Ruth Dodd
 Colleen Dolan-Greene
 Skip & Michelle Dorrington
 James Dries
 Peg Eaton
 Anne Frantz
 Daniel Edwards
 Timothy Eiseman
 Sue & Bob Elkins
 Donald Enderby
 Sheryl Fagin
 Jerry & Elaine Fedorisin
 Louis Ferraresi
 Lynn & Roger Fisher
 Valerie Flagler
 Phil Fleming
 Barbara Frey & Nick Thines
 Joyce & Steve Gerber
 Jennifer Giles
 Valerie Gondek
 Charles Gropper
 Therese Grossi & Paul Sklut
 JoAnn Haddad
 Kristin Hannahs
 Michael & Deanna Hayes
 Greg Haynes
 Thom & Janice Heidtman
 Leann Henry
 Charles & Nadean Hillary
 Daphne Hodder
 William Hoffert
 Barbara Houghton
 Brian & Vicki Howard
 Tom & Ann Hunt
 Patricia A. Huntington
 Denise & Gary Iams
 Jason & Rebecca Ingber
 Gregory Jablonski
 Callie Jerant
 Sue Jessup
 Angy Johnson
 George & Noreen Johnson
 Reid Johnson
 James Juergens
 Mark Kaminski
 June Kenny
 Edward Kiernan
 Paul & Leah Kileny

(continued)

CAST CIRCLE

(Gifts of \$100 to \$249)

Carolyn King
 Larry W. King
 Elizabeth Kinney
 Anthony Klain
 Brian Klaus
 Mary Knake
 Paul Kolsen
 Martin Kramer
 Pat & Howard Krausman
 Lilly Ladin
 Amy Lamoreaux
 Dave & Linda LaMoreaux
 Julie & Stephen Lavender
 Michael Lavich
 Michael & Robin Lebeis
 Deborah Lee
 Sandra Leonard
 Jean Lyle Lepard
 Wayne Lindstrom
 David & Janet Longworth
 Mark & Sandy Luetke
 Marcia & Jan Luke-Van Dijk
 Eric & Tanya Lupher
 Jean Luttig
 Louis & Carol Maccini
 Sherman & Charline MacCready
 Katie & Gary MacDonald
 Robert & Melany Mack
 Richard Mains
 Arthur Marotti
 Susan Matz
 Donald May
 MC Creative Design & Photography, LLC
 Michael & Carol McCarty
 Matt & Laura McKernan
 Barbara D. McMillan
 Margot & Tom Mehringer
 Donald & Barbara Meier
 Anne Mervenne
 Carol & William Middel
 Jackie & Stephen M Mierzejewski
 Matthew Miller
 Susan Milne
 Kimito & Jelena Mishina
 Alexandra & Matt Moore
 David Morena
 Hal Morgenstern
 Palmer & Susan Morrel-Samuels
 James Morrow

Roger & Beth Mulder
 Brian & Elizabeth Murray
 Brian T. Murray
 Rebecca Nickels
 Sean O'Keefe
 Sharon O'Leary
 Edward Olfier
 Nancy Owens & Jerome Weitzner
 Lois Pantier
 Barbara Underwood
 Brian Dambacher & Sarah Pearline
 Sharon Pedersen
 Lawrence & Nancy Peters
 Ann Marie Petsch
 Eric Pfeffinger
 Roberta Picard
 Kerry & Theresa Plank
 Jimmy Pollack
 John & Sue Potter
 Jon Poulos
 Gay & Rick Prasil
 John & Sally Preston
 Daniel Price
 Vicky Price
 George & Lori Pritchett
 Octavian Prundeanu
 David Quilter
 Charles Raimi
 Philip & Marguerite Reed
 Ronald Reichlin
 Bobalee Rethard
 Steven & Katherine Rhodes
 Joshua Richelew
 Norman Richert
 Ann Riddell
 Jan Ritchey
 Jessica Roberts
 Jim & Pat Robertson
 Gloria Rooke
 Stephen Rosenblum & Rosalyn Sarver
 Gail & Gary Ruby
 Tricia Ruby
 Nancy Rusten
 Charles Ryder
 Scott Andrew Sanderson
 Paul Satryb
 Jane Sauchak
 Mary Sauer-Games
 Michael Saunders

(continued)

CAST CIRCLE

(Gifts of \$100 to \$249)

Mary Price & Tom Schaub
Michael & Ilene Schechter
Dale & Gordon Schimmel
-in honor of Jennifer and George Michos
Margot Schreer
Darcy Schultz
Tim Donahue & Melisa Schuster
Bill Burns
Jeanne & Grant Shafer
Robert & Patricia Shaw
Cliff Sheldon
Patrick & Susan Shields
Sally Silver
Peggy & Michael Singer
Paul Sklut
Rachel Slupe
Danielle & Lawrence Smith
Linda Smith
Karen Smithbauer
Sherri Solomon
Karl & Linda Stearns
Nancy A. Stearns
Bob Swistock
Cathy & Roy Szyndlar
Jim & Mary Szyskowski
Don & Ann Theis
RC & JA Thomas
Tom & Jan Thomas
Jane & Nigel Thompson
John Thornburg
Janette & Martin Tobin
Jeanne & Dan Trainor

Howard & Denise Treado
Craig Trojan
Phil Tuchinsky
Roger & Dolly Tworek
Ann Utter
Abhay Vadhavakar
Mark Vandewege & Staci Gatica
Keith Vanhenten
Thrivent Financial
Don Vendittelli
Robin Von Wald
Lori & Andrew Wachler
Linda Spear & Jeffery Wanser
Virginia Weddell
Lynn Weimeister
Tracey Wentz & Chuck Blackmer
Hilary White
Donald Whitney
Wilczynski Family Fund
Marcia Wilhelm
Charlotte & Robert Wilks
Diane Winkelmann
Imogene & Paul Zimmermann
Lois Zurvalec

**THANK YOU FOR YOUR
AMAZING SUPPORT THIS SEASON!**

ADVERTISE IN OUR PLAYBILL



To reserve program ad space in our 2024-2025 season playbills, please send an email to our Marketing Associate, Lexi Teuscher at lexi@purplerosetheatre.org.

Visit www.purplerosetheatre.org/2024-25/ for complete season production information.

Program Advertising Deadline For Fall Production -- Aug. 22, 2024

**OFFICE CHRISTMAS PARTY
GRINCH IN FIGHT WITH RUDOLPH
POLICE CALLED
by Jeff Daniels**

Ad Size	Full Season Rate	3 Show Rate	2 Show Rate	Single Show Rate
Inside Covers (4.5" x 7.5")	\$5250 (B/W) (\$1312.50 per ad) \$6000 (Color) (\$1500 per ad)	\$4275 (\$1425 per ad)	\$3050 (\$1525 per ad)	\$1575
Advertisers who commit to an inside cover for four shows receive 8 complimentary tickets for the season.				
Full Page (4.5" x 7.5")	\$2600 (B/W) (\$650 per ad) \$3000 (Color) (\$750 per ad)	\$2025 (\$675 per ad)	\$1400 (\$700 per ad)	\$750
Advertisers who commit to a full page for four shows receive 6 complimentary tickets for the season.				
Half Page (4.5" x 3.625")	\$1500 (B/W) (\$375 per ad) \$1900 (Color) (\$475 per ad)	\$1245 (\$415 per ad)	\$900 (\$450 per ad)	\$475
Advertisers who commit to a half page for four shows receive 4 complimentary tickets for the season.				
Quarter Page (2.125" x 3.625")	\$900 (B/W only) (\$225 per ad)	\$750 (\$250 per ad)	\$550 (\$275 per ad)	\$300
Advertisers who commit to a quarter page for four shows receive 2 complimentary tickets for the season.				

LIBRARY READINGS



The Purple Rose has a long standing partnership with the Chelsea District Library. Together we share live play readings by established and rising playwrights, to promote and develop new work for our stage and theatre communities as far as our Zoom webinar can reach. Our play readings have connected us with people all across the United States, from Chicago and New York, to Los Angeles and the US Virgin Islands. During our September 10, 2022 play reading, we had international attendance from west Africa, more specifically, Nigeria.

Play readings are free to all and take place on Saturday mornings at 10:30am, EST. Virtual attendees are able to view a live play reading and offer feedback in a group chat with the cast, director and playwright.

To join us, visit our website at PurpleRoseTheatre.org or go to ChelseaDistrictLibrary.org for more information and how to register.

Upcoming Play Readings via Zoom:
Saturdays at 10:30am EST

June 22 | July 13 | Sept. 14 | Nov. 2

UP NEXT



OFFICE CHRISTMAS PARTY GRINCH IN FIGHT WITH RUDOLPH POLICE CALLED

A World Premiere by Jeff Daniels

September 26 - December 22, 2024

An office Christmas party goes wrong when two employees dressed as The Grinch Who Stole Christmas and Rudolph, The Red Nosed Reindeer disagree over where to clap along on "Silent Night". When a video of this non-brawl goes viral, the Internet offers our two non-violent co-workers \$100,000 to stage a live stream Winner Take All Rematch between these two beloved Christmas characters.

**Contains adult language and subject matter.*

Group Sales Begin: Tues. July 2, 2024
Donor Sales Begin: Tues. July 30, 2024
General Sales Begin: Tues. Aug. 13, 2024

PATRON INFORMATION

Contact

Address: 137 Park Street
Chelsea, MI 48118

Box Office: 734.433.7673

tickets@purplerosetheatre.org

Administration: 734.433.7782

info@purplerosetheatre.org

Fax: 734.475.0802

Box Office Hours:

Monday thru Friday: 1:00 PM - 6:00 PM

Box Office Performance Hours:

Monday CLOSED

Tues. & Wed. 1:00 PM - 6:00 PM

Thurs. & Fri. 1:00 PM - 9:30 PM

Saturday 1:00 PM - 9:30 PM

Sunday 12 Noon - 5:00 PM

Performance Times

Wednesday at 3:00 PM

Thursday at 3:00 PM & 8:00 PM

Friday at 8:00 PM

Saturday at 3:00 PM & 8:00 PM

Sunday at 2:00 PM

Visit PurpleRoseTheatre.org for complete schedules and added performance dates.

Tickets

Photo ID must be presented at the box office to see the show.

Tickets may be purchased by phone or online at PurpleRoseTheatre.org with Visa, MasterCard or American Express.

Full payment is due at time of reservation. Patrons may exchange or cancel tickets up to 24 hours prior to performance without penalty. Web and phone sales fees are nonrefundable.

Group reservations for 12 or more are available at a discount of \$4 per ticket. Tickets must be pre-paid three weeks prior to performance.

Gift Cards

Gift Cards are available in any amount! See the Box Office for more details.

Accessibility

The PRTC complies with all current ADA Standards. Assisted listening devices and large print programs are available upon request at our Box Office for all performances.

Hearing Loop Technology-Switch Hearing Aid to T-Coil

Activate the telecoil (t-coil) in your hearing device to hear sound with less background noise -- directly into your device. If you do not have a t-coil enabled device, request a headset and receiver at our Box Office.

Refreshments

Please do not bring anything to eat or drink into the theatre.

No Smoking Policy

Smoking is not permitted inside the building.

Cameras and Recording Devices

The making of photographs and/or recordings is strictly prohibited inside the theatre.

Electronic Devices

During performances, please turn off or silence cellular phones, watch alarms and other electronic devices.

Babes-in-arms

Out of consideration for our patrons and performers, babes-in-arms are not allowed in our theatre during performances.

Complimentary Cough Tablets

These are available at the Box Office. To avoid performance distractions, please unwrap them prior to the performance, at intermission or during the break between scenes.

Please Remain Seated

Actors may be using the aisles for entrances and exits during the show.

Late Seating

Once the performance has begun, seating is at the discretion of the House Manager.



*Sean Carter Photography
Kristin Shields & Kate Thomsen*

banking is simple

From the “Mitten” to the “Big Apple”,
experience seamless banking solutions
with us. Sit back and enjoy the show!

chelseastate.bank

