

# Bert & Trixie Visit the Vet

A WORLD PREMIERE BY MATT LETSCHER

DIRECTED BY RHIANNON RAGLAND



the  
PurpleRose  
theatre company



# CHELSEA home

curated by



Be inspired by a place that feels like home.

Explore our collection of home décor, furniture, seasonal gifts, and everything you need to entertain - curated by our award-winning interior design studio.

Find something delightful for your home — and your pet!

734.201.2342  
107 S. Main St. | Chelsea, MI 48118

## Welcome to Bert & Trixie Visit the Vet!

This show has been such a unique joy to work on! Part of the fun of theatre is that we get to create a unique world that only has to abide by the rules that we apply to it. There just aren't a lot of bi-pedal, 6'3" cats that speak fluent English to draw from! That means we were able to make up a lot of our own rules and boundaries for behaviors, but you'll see some nods to real animals that we drew inspiration from if you look closely enough! So here are some of the **fun facts** that our design team played with...

### FUN FACT:

Birds do not have vocal cords like humans. Instead, birds have a unique vocal organ called the *syrinx* located deep in the bird's chest, at the junction of the trachea and bronchi. It contains elastic membranes that vibrate to produce sound.

**Result:** Our parrot, Leonard, can speak to both the humans (kind of) and the other animals by using a different voice depending on who he's speaking to.

### FUN FACT:

Dogs see the world in a way that is similar to humans with red-green color blindness. They can perceive shades of blue and yellow, but struggle to distinguish between red and green.

**Result:** You'll notice the color choices in our set were influenced by the dogs view of the world.

### FUN FACT:

Cats can jump up to five times their height. This incredible jumping ability is thanks to their flexible spines and well-developed muscles.

**Result:** While our sweet Bitchy is long and lean, he can't quite jump that high but he can climb that high! Hence our beautiful cat tree nod. And we hope he always lands on his feet.

### FUN FACT:

Birds see a broader range of colors than humans. Birds are tetrachromats, meaning they have four types of color cones in their eyes, allowing them to perceive ultraviolet light, which humans cannot see.

**Result:** This gave our lighting designer permission to expand our interior world full of colors and directions that you might not find in your local vet's office.

We hope you enjoy the experience of the unconditional love we have for our work, our pets and our audiences and cannot thank you enough for taking time to come here and spend the day in our magical world!

Rhiannon Ragland  
Purple Rose Artistic Associate

**A Special Thank You To Our  
2024-2025 Season Underwriters:**

Michigan Arts and Culture Council

National Endowment for the Arts

The Shubert Foundation

The Matilda R. Wilson Fund

**“Bert & Trixie Visit the Vet”  
Production Sponsors:**

Chelsea Home curated by Kitty & Co.

Lane Animal Hospital

This production is supported in part by an award from  
MICHIGAN ARTS AND CULTURE COUNCIL  
and NATIONAL ENDOWMENT FOR THE ARTS.



**JEFF DANIELS**

Founder & Artistic Director

**KATIE HUBBARD**

Managing Director

with media partners

**JTV | Michigan Public**

presents

**Bert & Trixie  
Visit the Vet**

**by Matt Letscher**

Set Design

**SARAH PEARLINE**

Costume Design

**SHELBY NEWPORT**

Lighting Design

**NOELE STOLLMACK**

Properties Design

**DANNA SEGREST**

Sound Design

**BRAD PHILLIPS**

Stage Manager

**STEFANIE DIN\***

Director

**RHIANNON RAGLAND**

\*member of Actors' Equity Association, the Union of  
Professional Actors and Stage Managers in the United States.





**RAINBOW TAILS**  
Dog Walks & Pet Care

**Tell Your Dog  
to Call Us!**

DOG WALKS  
CAT VISITS  
PET TAXI OVERNIGHTS  
& MORE!










  
 @rainbowtailsa2

(734) 730-7297  
 hello@rainbowtailsa2.com  
 www.rainbowtailsa2.com

**Servicing the greater  
Ann Arbor area!**



*Serendipity*  
**BOOKS**



*Ask us about our world-famous book brigade!*

Sending endless thanks to our friends and supporters for  
making our move something Chelsea will never forget.

119 S. Main Street  
 Chelsea, MI 48118  
 734.475.7148  
 www.serendipity-books.com

## CAST OF CHARACTERS

Bert. . . . . Jonathan West\*  
 Trixie . . . . . Jamie Elvey\*  
 Bitchy . . . . . Mark Colson\*  
 Leonard . . . . . John Seibert\*  
 The Owner . . . . . Meghan VanArsdalen\*  
 The Nurse. . . . . Maria Ru-djen\*

\*member of Actors' Equity Association, the Union of Professional Actors and Stage Managers in the United States.

**PLACE:** A veterinarian's waiting room in Los Angeles.

**TIME:** Today.

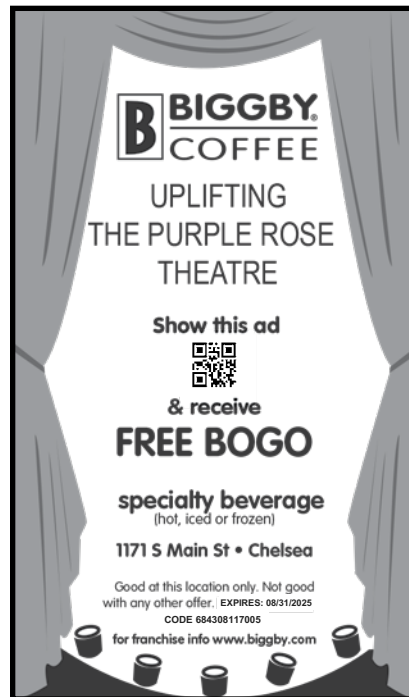
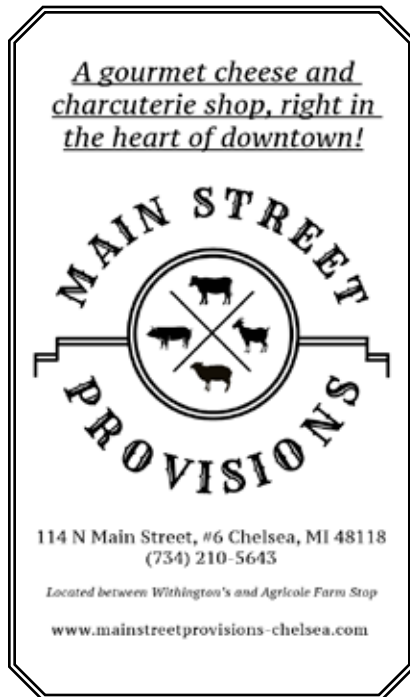
## PLEASE NOTE

**There is NO intermission during the performance.**

Please keep the aisles clear for the actors' entrances and exits.

The making of photographs and/or recordings inside the theatre is strictly prohibited.

Food or drink inside the theatre is prohibited.



## CAST OF CHARACTERS



**MARK COLSON** (*Bitchy*) Mark was last seen at The Purple Rose in *A Jukebox for The Algonquin* where he also had the honor of playing the title role in the world premieres of the *Sherlock Holmes* trilogy: *The Adventure of the Fallen Soufflé*, *The Elusive Ear*, and *The Ghost Machine*, by David MacGregor. He also appeared in the world premiere of *The Gaps in the Fossil Record*, by Matt Letscher. Other credits include the world premieres of *Pulp*, *The Gravedigger - A Frankenstein Story* at The Williamston Theatre and also appeared in *These Mortal Hosts*. Mark recently finished shooting the film *Hershey*. TV roles include: *I Am Not Okay with This*, *Outsiders*, *Banshee*, *Mad Men*, *Parks and Recreation*, *Justified*, *Gilmore Girls*, *CSI: NY*, *Bones*, *Angel*, and *Low Winter Sun* (See IMDB). Mark has received several best actor/supporting actor awards and nominations in Michigan and L.A. Mark thanks the production team, staff, and cast at The Rose for creating this incredible and essential theatrical home. Thanks to my feline research team- Sasha, Tom-Tom, and Raven. As always, Go Blue!



**JAMIE ELVEY** (*Trixie*) is thrilled to be making her Purple Rose Theatre Company debut! Jamie earned her BFA in Acting from the University at Buffalo and her MFA in Acting from UC Irvine. Her previous credits include *Rabbit Hole* (dir Robert Cohen), *Learn to be Latina* (Mixed Blood Theatre), *Reasons to be Pretty* (Nixon Theatre, OC), and *The Wolves* (dir Kate Thomsen). You'll be able to catch her in the upcoming film, *Last of the Wild Buffalo*. Next up, Jamie will be performing as Wanda in the Purple Rose's production of *Norma and Wanda* by Jeff Daniels. She would like to thank Rhiannon, Lucas, the Stage Management team, the talented cast, and the entire PRTC community! Jamie lives in Okemos, with her loving and supportive family! A special thank you to her husband, Ryan, her son, Grayson, her mom, and of course, her pets!

**Look  
younger,  
faster!**

**FarmSudz**  
farmsudz.com

Phenomenal  
handmade skincare,  
soaps, merch, and a  
really good time!

Chelsea | 109 S Main St | 734-593-7030 | T W Th F Sat 10a - 5p  
Jackson | 229 S Mechanic St | 517-435-4076 | T W F Sat 10a - 4p, Th 10a - 6p




The Purple Rose Theatre is grateful for the  
support of

**Cottage Inn**  
Gourmet Pizza®  
Chelsea, MI

and their donation  
of pizza for our  
last College Night!

734-475-8833      www.cottageinn.com




## CAST OF CHARACTERS



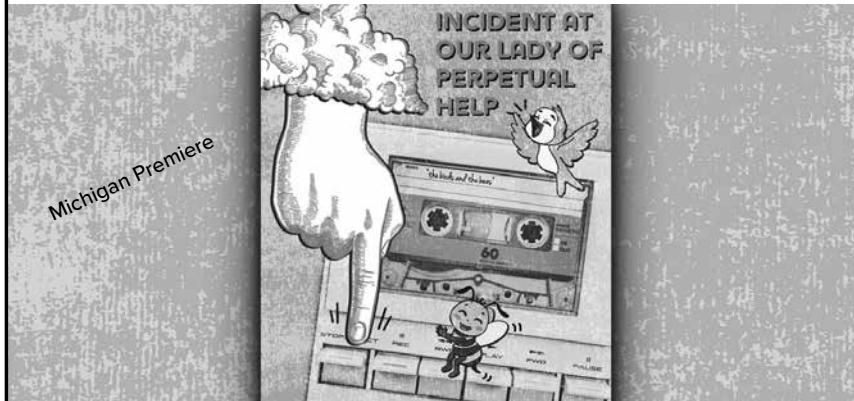
**MARIA RU-DJEN** (*The Nurse*) Maria is delighted to be a part of this world premiere by Matt Letscher. This will be Maria's first time as a principal cast member at the Purple Rose, but she has performed as an understudy for several productions. Beginning with *Mornings at Seven* in 2016, Maria has understudied for eight productions here. This season, she understudied the role of Izzy in *My Mother and the Michigan Ohio/ War* and was honored to share the role of understudy for Madge with Mr. Daniels in his production of *Office Christmas Party*, *Grinch in Fight With Rudolph*, *Police Called*. Regional credits include the Lakeside Theatre's production of *I Remember Mama* in Toledo, and their inaugural production of *The Heiress*. She has been an appreciative participant in the Snapshots Storytelling events sponsored by PencilPoint Theatre and is a proud recipient of an AudioFile Earphones Award for her audiobook narration of *After Oz* by Gordon McAlpine. Many, many thanks to the entire production team and staff at the Rose, and to her family for their unending support.



**JOHN SEIBERT** (*Leonard*) John's first appearances with The Purple Rose date back to Season 1. He originated roles in several premieres here including *Shoe Man*, *The Vast Difference*, *Escanaba in da Moonlight*, *Panhandle Slim & The Oklahoma Kid*, and Matt Letscher's *Sea of Fools*. John last appeared here as Dennis in *A Jukebox for The Algonquin*. Other Michigan and regional credits include Tipping Point Theatre (*Grand Horizons*, *A Doll's House 2*, *Vanya*, *Sonia*, *Masha and Spike*) and featured roles at Williamston Theatre, Performance Network, Jewish Ensemble, Meadow Brook, North Coast Rep (San Diego), Alabama Shakespeare Festival and five seasons with Actors Theatre of St. Paul. Feature films include *Batman vs. Superman*, *Kill The Irishman*, and *Supersucker* (with Jeff Daniels). John served as an instructor in communication and theatre arts at Eastern Michigan University for 30 years. Love and thanks to Lynne and special thanks to all of the "families" we are privileged to be a part of when we make art for audiences like you!



June 26 - August 3, 2025



**Incident at Our Lady of Perpetual Help** by Katie Forgette

Directed by Karen Sheridan

Featuring: Sandra Birch, Faith Green, John Lepard, Sophia Psiakis, Emily Sutton-Smith



Williamston Theatre  
122 S Putnam St., Williamston 48895  
517-655-7469  
[www.williamstontheatre.org](http://www.williamstontheatre.org)



## CAST OF CHARACTERS



MEGHAN VANARSDALEN (*The Owner*) is buzzing with excitement to return to the Purple Rose Theatre, where she is a proud Resident Artist. She was previously seen at the Purple Rose in *Diva Royale*, *Human Error*, and *Welcome to Paradise*. Meghan has worked with many companies across Southeast Michigan, including Tipping Point Theatre, where she has been seen in *Little Women*, *The Squirrels*, and *Game. Set. Match!*. She has also appeared onstage in New York at the Actors Studio, the Hudson Guild Theatre, Penguin Rep Theatre, and the Tank. Meghan holds a BA in theatre from Siena Heights University and an MFA in acting from the New School for Drama. She extends heartfelt thanks to Jeff, Rhi, Lucas, Matt, the cast, and all the players behind the scenes at The Purple Rose. Meghan dedicates this show to her cute and crazy canine companions, Roo and Puck. For more, visit [meghanvanarsdalen.com](http://meghanvanarsdalen.com).



JONATHAN WEST (he/him) (*Bert*) last worked at the Rose as Henri Franklin's understudy in *Office Christmas Party*, *Grinch in Fight with Rudolph*, *Police Called*, written and directed by Jeff Daniels, and was last up as 'Carolinnensis' in Robert Askins' *The Squirrels*, directed by Julia Glander, at Tipping Point Theatre in Northville, MI. Recent regional work includes performing as 'Prospero' in William Shakespeare's *The Tempest*, directed by Sam White at Campus Martius, in Detroit, and performing as 'King Arthur' in Melody Bates' *Avalon*, directed by Joan Jubett, on Deer Isle in Maine. He was most recently on film for Victoria Rowell's *Catfish Christmas* and Geert Heetebrij's *The Manifestation*. Having provided voice work for the *Arts Initiative* at the University of Michigan (U-M) and for the *Film Reroll* and *Chilling Tales for Dark Nights* podcasts, Jonathan has also worked with Ozone Music and Sound on various commercials and video games. He is Company Manager for The Players at U-M's Center for Research on Learning and Teaching and lives near his family in South-East Michigan.

TIPPING  
POINT  
THEATRE.

## SUMMER SESSIONS



The Planet Ant  
Home Team

JUL 17-19 | 7:30 PM

Keeper

JUL 31 - AUG 2



248.347.0003  
TippingPointTheatre.com

## DIRECTOR



RHIANNON RAGLAND (*Director*) is an Artistic Associate and Resident Artist at The Purple Rose, and she is so honored to Direct another PRTC World Premiere! She hopes you enjoy the experience of this cast's hilariously gorgeous work as much as she did! Rhiannon has worked as a Director, Choreographer and Assistant Director since 2010 and she has helped stage over 19 professional productions. PRTC directing credits include, *A Stone Carver* (Wilde Award winner for Best Play), *Vino Veritas* (revival 2017), *Pickleball* by Jeff Daniels (Wilde Award; Best Play/Director), *In Common*, *The Antichrist Cometh*, and *Fourteen Funerals*. As an actor, Rhiannon made her professional debut at The Purple Rose with the show, *When the Lights Come On*, and continued her education with roles in 25 professional productions. Some personal favorites include: *Consider The Oyster*, *Best of Friends*, *Some Couples May...*, and *Flint*. She was last seen in *Diva Royale*. A huge thanks to Matt, Jeff, and the entire PRTC community for being fearless and doing the unsung work of keeping storytelling alive. Special thanks to her family, especially Punk and the Babiez for embracing our art in their lives.

## PLAYWRIGHT



MATT LETSCHER (*Playwright*) A Michigan native and proud Wolverine, Matt began writing plays for PRTC in 2006 with his Red Scare farce, *Sea of Fools*. An award-winning playwright and actor, his play *Demolition* garnered the 2025 StageRaw Award for Best Playwriting after an extended run in Los Angeles and *Gaps in the Fossil Record* received the 2015 Edgerton Foundation's New Play Award for its production at the Purple Rose. As an actor, Matt has appeared on Broadway and regionally in the world premieres of plays by Neil Simon, Howard Korder, Julia Cho, Jeff Daniels, Kate Robin, Beth Henley, and Lanford Wilson. He's been a company member of Pacific Resident Theatre in Venice, California for 25 years, appearing in productions of *Tonight at 8:30*, *On Approval*, and *Cigarettes and Chocolate* and receiving an LADCC Best Actor Award for the title role in *Anatol*. Film credits include Michael Bay's *13 Hours*, Spike Jonze's *Her*, Martin Campbell's *The Mask of Zorro* and the upcoming indie *Shattered Ice*. TV credits include series regular and recurring roles on *Narcos: Mexico*, *The Alienist*, *The Flash*, *Legends of Tomorrow*, *Scandal*, and the recent spin-offs *Suits: LA* and *Georgie and Mandy's First Marriage*. Matt is thrilled to be returning to the Purple Rose with *Bert and Trixie Visit the Vet*. As an actor and a playwright, the Rose has always been home and its support and encouragement have been essential. Profound thanks to Jeff, Rhiannon, Lucas and all the artists and staff that make it so.



**THE ENCORE**  
musical theatre co.

# WEST SIDE STORY

**HURRY!**  
Most performances are  
**SOLD OUT!**

**JUNE 5-JULY 6, 2025**

Season 2025/26  
**17**  
Main Stage

**SHE LOVES ME**  
OCTOBER 2-11, 2025

**FROZEN**  
DEC. 4, 2025-JAN. 18, 2026

**RENT**  
APR. 9-MAY 3, 2026

**FIDDLER ON THE ROOF**  
JUNE 5-JULY 19, 2026

**SUBSCRIPTIONS  
ON SALE  
JULY 1ST!**

**THEENCORETHEATRE.ORG**  
7714 ANN ARBOR ST | DEXTER | 734.268.6200  
Southeast Michigan's Premier Professional Musical Theatre



## DESIGNERS

SHELBY NEWPORT (*Costume Designer*) is a professor of theatre at the University of Michigan-Flint. She received her M.F.A. from Purdue University and completed her undergraduate studies at Cornell College. She designs regionally at Tipping Point Theatre, Kickshaw Theatre, Detroit Public Theatre, Flint Repertory Theatre, and is a Resident Artist here at the Purple Rose Theatre Company. Her designs have been seen internationally in London and Margate, England. Shelby is thrilled to be designing costumes for this new play, it is her fourteenth production at PRTC, previously she designed the costumes for *Office Christmas Party...*, *In Common*, *Pickleball*, *Roadsigns*, *Diva Royale* (2018 & 2023), *Flint*, *God of Carnage*, *Smart Love*, *Morning After Grace*, *Casting Session*, *Superior Donuts*, and *A Stone Carver*. You can see more of Shelby's work at [www.shelbynewport.com](http://www.shelbynewport.com).

**TIBBITS.org**  
Coldwater, MI  
517.278.6029

**PROFESSIONAL SUMMER THEATRE 2025 SEASON**

**MILLION DOLLAR QUARTET**  
Sponsored by CBPU  
June 13-14, 18-21

**ACT THREE**  
Sponsored by Parrish  
June 27-28, July 2-3, 5

**LITTLE SHOP OF HORRORS**  
SPONSORED BY FREDERICH FAMILY DENTAL  
July 11-12, 16-19

**THE 25<sup>th</sup> ANNUAL PUTNAM COUNTY SPELLING BEE**  
SPONSORED BY CASE REALTY GROUP, AM1590 FM95.5 WTVB  
July 25-26, July 30-Aug 2



SARAH PEARLINE (*Scenic Designer*) has worked as a set and projection designer with such companies as Circus Flora, St. Louis Symphony, Experimental Theatre Wing, Titan Theatre Company, Prospect Theatre Company, SoHo Think Tank, Nickelodeon Networks, and NY Stage and Film. Sarah is an Associate Professor in the Theatre and Dance department at Wayne State University in Detroit. Locally, she has had a wonderful time working with Tipping Point Theatre, Hope Summer Rep Theatre, Detroit Public Theatre, Michigan Shakespeare Festival, Carrie Morris Arts Production and PuppetArt Theatre, Satori Circus and the DIA. As a resident artist here at PRTC, she previously designed *Fourteen Funerals*, *What Springs Forth*, *The Antichrist Cometh*, *In Common*, *Pickleball*, *Under Ceege*, *Roadsigns*, *Never Not Once*, *Willow Run*, *Harvey*, *Vino Veritas*, *Morning's At Seven* and *Talley's Folly* and is so grateful to be back with the artists here for another magical show!

*Celebrating 100 years!*

**Merkel**  
FURNITURE AND CARPET ONE

f t p i  
merkelfurniture.com



## WHEN YOUR IMAGE IS ON STAGE...

turn to  
**Foresight Group**  
for a perfect performance

**FORESIGHT GROUP**  
Print Solutions That Deliver

Print  
Mail  
Promos  
Display Graphics  
Signs

**734.971.1700**  
5905 Jackson Rd.  
Ann Arbor, MI 48103  
[www.foresightgroup.net](http://www.foresightgroup.net)



*Proudly supporting the arts!*

### Attorneys & Advisors to Businesses and Individuals Throughout Mid-Michigan Since 1901

Business Advising  
Transactions & Litigation  
Employment Counseling

Succession Planning  
Bankruptcy & Collections  
Estate Planning  
Probate & Trust Services

Real Estate Law  
Tax Issues  
Non-Profit Organizations

Philip J. Curtis\*  
Brad A. Brelinski  
Jeffrey T. Landon

**Curtis Curtis Brelinski, P.C.**  
ATTORNEYS | EST. 1901

\*Purple Rose Board Member for over 20 years

County Tower Building  
120 W. Michigan Ave., Suite 1500  
Jackson, MI 49201  
**517/787-9481**

[www.curtiscurtislaw.com](http://www.curtiscurtislaw.com)

## DESIGNERS

**BRAD PHILLIPS** (*Sound Designer*) is a professional musician by trade, most known on The Purple Rose stage from his many appearances with Jeff Daniels' *Onstage & Unplugged*. A violinist, fiddler, mandolinist, guitarist, and vocalist, Brad serves as a Resident Artist at PRTC and has provided musical elements for *The Last Romance*, *Annapurna*, *2AZ*, *Steel Magnolias*, *Talley's Folly*, *Gaps in the Fossil Record*, *Flint*, and was the sound designer for *Morning's At Seven*, *Harvey*, *All My Sons*, and all three installments of the *Sherlock Holmes* plays by David MacGregor. Brad also served as co-musical director, co-composer and played The Pilot in the PRTC production of *Willow Run*. As a performing musician, Brad has appeared with Stevie Wonder, Aretha Franklin, Iggy Pop, Pat Metheny, The Verve Pipe, and is currently on tour with Patti LuPone in her show *A LIFE IN NOTES*. In 2014, he served as producer for Jeff Daniels' studio recording "Days Like These" and the 2016 collaboration with Brian Vander Ark called "Simple Truths". Brad holds a bachelor's degree in Jazz Studies, as well as a master's in Improvisation, both from the University of Michigan School of Music, Theatre & Dance where he is now on faculty. Brad is enthusiastically proud to call The Purple Rose his creative home. He would like to thank his parents, his children, and his fiancée Hope for the endless support and joy that they bring to his world. Hope, here's to 40 million! #starstuff

**DANNA SEGREST** (*Properties Designer*) is very happy to create her 125th design for the Purple Rose with *Bert & Trixie Visit the Vet* by Matt Letscher. Danna has enjoyed being part of the Purple Rose Theatre Company since volunteering for the first auditions, before the theatre was even completed. She became an Equity Stage Manager and has stage managed many Purple Rose shows, most recently *Under Ceege* by Jeffery Chastang in 2021. Danna has designed properties for almost all of our productions including Matt's first show with us, *The Tropical Pickle* by Jeff Daniels, where she rigged curtains to drop on him in every show. She now wears many hats for the Purple Rose as Resident Properties Designer, Resident Artist, Archival Photographer, and as a Box Office Assistant. Wade and Reeve have had many visits to the vet with Danna, for Lazlo, Gizzy, Spike, and even Zachariah, the Haitian boa constrictor that she had for 38 years.



*In Memory of  
Anne Marshall,  
who loved the  
Purple Rose Theatre.*

## Polly's Country Market

**Serving You Better,  
Saving You More  
Since 1934!**

1255 South Main Street  
Chelsea, MI 48118  
[www.country-markets.com](http://www.country-markets.com)

**734.433.0130**

**Jackson's Leading  
Source for News,  
Information and  
Entertainment. JTV is  
Jackson TV.**



Watch JTV on Comcast, AT&T U-Verse,  
WOW, Roku, Amazon Fire TV and  
online at [www.jtv.tv](http://www.jtv.tv).



## DESIGNERS

**NOELE STOLLMACK** (*Lighting Designer*) Noele Stollmack's lighting has appeared onstage at The Brooklyn Academy of Music, Sydney Opera House, Carnegie Hall, The Library of Congress Theatre, Verizon Hall, as well as the opera companies of Santa Fe, Ontario, Houston, Portland, Vancouver, New Orleans, Nashville, Madison and Milwaukee. Regional design for the theatre includes Baltimore Center Stage, Cincinnati Playhouse, Houston's AlleyTheater, Wisconsin's Chamber Theatre, Renaissance Theaterworks, Skylight Music Theatre, American Players Theatre, Forward Theatre, Next Act Theater, Peninsula Players and Milwaukee Repertory Theatre. Some notable examples of Noele's scenic realization and set design includes Meredith Monk's international tours of *mercy & impermanence*, *Giulio Cesare in Egitto*, *Albert Herring*, *Dido and Aeneas*, *Venus and Adonis*, *Rio de Sangre*, *Macbeth*, *Tristan und Isolde* and *Magic Flute* for the Florentine Opera, *Rape of Lucretia* at Toledo Opera, *Pagliacci* with Columbus Opera, and *Mirandolina* for the Milwaukee Rep. As Lighting Director for the Houston Grand Opera, Noele supervised the lighting for over 50 operas and designed such productions as Andrei Serban's *Elektra*, Dr. Jonathan Miller's *Der Rosenkavalier* and the world premieres of *Harvey Milk*, *Desert of Roses* and *Dracula Diary*. Member: United Scenic Artists Local 829

## STAGE MANAGEMENT

**STEFANIE DIN** (*Stage Manager*) is thrilled to be working on another World Premiere at the Purple Rose! Stefanie is a resident Stage Manager at the Williamston Theatre and an Artistic Associate with The Michigan Shakespeare Festival, and was the Tech Director/ Tour Coordinator for their high school tours of *Romeo and Juliet* and *Macbeth*. She was also part of Central Michigan University's Theatre Department, and The Purple Rose Theatre's Apprentice Program. Stefanie would like to thank Katie and Jeff for bringing her back, Rhiannon for her trust and amazing direction, and Syd and Mary for literally everything they do. Special thanks to Tony for continuing to be an outstanding friend and mentor, to her extraordinary family and friends for their constant love and support - especially her parents, and to Brian and Keeley for being her inspiration every day. Love hard. Be kind. Always.



## STAGE MANAGEMENT

JENNIFER LOWE (She/her) (*Short Term Assistant Stage Manager*)  
A Michigan native Stage Manager who graduated from Michigan State University with a BFA in Stage Management. Professional stage management experience includes, *Three Little Birds* and *Natural Shocks* at Hope Repertory Theatre, *The Little Match Girl* workshop and summer camp, produced by Yaya Theatre Company in NYC. Jennifer also works closely with The Possibly Project, a non-profit in NYC and has stage managed the following shows for them- *Realize*, *What Do They Know*, and *By Any Means*. *In Pieces: A New Musical* by Joey Contreras, *Jesus Christ SuperStar* at The Fulton Theatre, and the Purple Rose's own *Office Christmas Party*, *Grinch in Fight with Rudolph*, *Police Called*. Jennifer is very excited to be working at the Purple Rose Theatre Company again! Thank you to everyone who has made this show possible and thank you for coming to support us all!

MARY TOTH (she/they) (*Assistant Stage Manager*) is a Michigan-based stage manager who is excited to be joining the Purple Rose for another production this season! She was previously the Stage Manager for *Fourteen Funerals* and a Production Assistant Stage Manager for *Office Christmas Party*, *Grinch in Fight with Rudolph*, *Police Called*. Mary recently returned to the PRTC after a brief stint at the Utah Shakespeare Festival training the Festival Scheduler and Greenshow Stage Manager. Some of Mary's other favorite stage managerial credits include: *Six Men Dressed Like Joseph Stalin* (staged reading), and *The Greenshows* at the Utah Shakespeare Festival; *Kinky Boots*, *A Little Night Music*, and *La Traviata* at Quisisana; and *Natasha*, *Pierre*, and *the Great Comet of 1812* and *The Play that Goes Wrong* at WMU Theatre. After spending most of her childhood in Brighton, Mary is honored to return to Southeast Michigan to work with the Purple Rose Theatre Company this season. She would like to thank Inca, Toby, and Eloise for being the bestest kitty cats and doggos that a lady could ask for.

## PRODUCTION STAFF

Assistant Stage Manager . . . . . Mary Toth\*  
Short Term Assistant Stage Manager . . . . . Jennifer Lowe\*  
Head of Production and Technical Consultant . . . . Brian Dambacher  
Technical Production Manager . . . . . Ryan Graves  
Artistic Associate . . . . . Lucas Daniels  
Artistic Associate . . . . . Rhiannon Ragland  
Resident Properties Designer . . . . . Danna Segrest  
Head Stage Technician . . . . . Caleb Wimbrow  
Production Associate . . . . . Sydney Dillen  
Production Associate . . . . . Eric Hohnke  
Production Associate . . . . . Robert W. Hubbard  
Safety Liaison . . . . . Sydney Dillen  
Patron Services Manager . . . . . Kate Voigt  
Assistant Patron Services Manager . . . . . Kelly Fielder  
House Manager . . . . . Rudy Thomas  
Box Office Associate . . . . . Kathryn Hermann  
Box Office Associate . . . . . Josh Lapping  
Box Office Associate . . . . . Katrin Murdock  
Production Photographer . . . . . Sean Carter  
Archival Photographer . . . . . Danna Segrest  
Production Graphic Design . . . . . Daryl L. Fazio  
Program Coordinator . . . . . Lexi Teuscher  
Program Printer . . . . . Foresight Group

\*member of Actors' Equity Association, the Union of Professional Actors and Stage Managers in the United States.

## ACKNOWLEDGMENTS\*\*

David Bendena	Charley Morrison
Jon Bennett	Stephanie Newport
Kyleigh Burtley	Rudy Thomas
Laura Duvall	Wayne State University
Jack Husted	
Joel Klain	

\*\*Please see program insert for additional acknowledgments.

## FOUNDER & ARTISTIC DIRECTOR

JEFF DANIELS has been the Artistic Director of his career for forty eight years. Stepping into the role at the Purple Rose, he is giving his decades worth of experience to the talented artists who call the Purple Rose their creative home. Aside from writing twenty one plays, all of which premiered here, Jeff directed the PRTC productions of Lanford Wilson's *The Hot L Baltimore* (1997) and three of his plays; *Boom Town* (1998), *Diva Royale* (2023), and *Office Christmas Party*, *Grinch in Fight with Rudolph*, *Police Called* (2024). On film, he wrote, directed, and starred in two independent features: *Escanaba in da Moonlight* (2001) and *Super Sucker* (2002), both shot in Michigan. In 1976, Jeff became a member of New York's Circle Repertory Company and has appeared on Broadway in *Fifth Of July* (1980), *The Golden Age* (1984), *Redwood Curtain* (1993), *God Of Carnage* (2009), *Blackbird* (2016), and *To Kill A Mockingbird* (2018). He has been nominated for five Golden Globes, five Emmys (winning for *Newsroom* and *Godless*) and three Tonys. Seasons 1 & 2 of his audio memoir, *Alive And Well Enough*, are available on Audible.com.

## MANAGING DIRECTOR

KATIE HUBBARD is so pleased to be managing the business of the Purple Rose for the last 11 years. She was previously the General Manager of First Stage Milwaukee, a professional children's theater that also houses the largest theater training program of its kind in the nation, as well as being Wisconsin's leader in arts-in-education programming. Katie hails from Rochester, Michigan and received her Bachelor of Arts in Theater from Albion College in 2002. She is also a graduate of the Purple Rose Apprentice Program and former AEA Stage Manager. Katie could not do what she does without the love and support of her husband Rob and two amazing children. She is proud to be PURPLE.

## ARTISTIC ASSOCIATES

LUCAS DANIELS will celebrate four years this September, as an Artistic Associate here at the Purple Rose Theatre Company! This is the Artistic Directing team's third year together and Lucas is very excited for the lineup of shows. The Purple Rose 2024/2025 season is all about comedy and includes three World Premiere productions and a Michigan Premiere. Next up, the World Premiere comedy, *Bert & Trixie Visit the Vet* by Matt Letscher! Lucas is a graduate of Michigan State University, 2011 (Go Green!) and a graduate of the Purple Rose Apprenticeship Program, 2011-12. He is part of the Actors' Equity Association and received his card in 2012, at the Purple Rose. Lucas couldn't do this job without the love and support of his family. Love you so much, Shannon, Daphne, and Delaney.

RHIANNON RAGLAND has worn many hats at the Purple Rose over the years and is honored to be in her 4th year as part of the Artistic Directing Team (Artistic Associate). A Flint, MI, native and proud member of Actors' Equity Association, she made her professional acting debut at 8 years old at the New Vic Dinner Theatre, continued her artistic education by working as a professional actor and Teaching Artist for various theatres, schools, and producing organizations throughout Michigan before becoming a Resident Artist here at PRTC in 2007. Rhiannon has worked as an actor in over 25 productions, and as a choreographer and a director helping stage more than 19 productions and winning Wilde Awards for her direction of *A Stone Carver* and *Pickleball* (Best Play). Special thanks to her family, WokeD, Punk, ODawg and Nugget. "Thank you for continually building a life full of creativity and love. And to our audiences, Welcome Back, we hope you enjoy our story!"

## ADMINISTRATIVE STAFF & ARTISTS

Founder and Artistic Director ..... Jeff Daniels  
 Managing Director ..... Katie Hubbard  
 Company Manager ..... Amy Klain  
 Head of Production and Technical Consultant ..... Brian Dambacher  
 Technical Production Manager ..... Ryan Graves  
 Director of Donor Engagement ..... Robert Caplis  
 Artistic Associate ..... Lucas Daniels  
 Artistic Associate ..... Rhiannon Ragland  
 Diversity Enrichment Consultant ..... Lynch R. Travis  
 Donor Services Associate ..... Aja Brandmeier  
 Head Stage Technician ..... Caleb Wimbrow  
 Production Associate ..... Sydney Dillen  
 Production Associate ..... Eric Hohnke  
 Production Associate ..... Robert W. Hubbard  
 Patron Services Manager ..... Kate Voigt  
 Assistant Patron Services Manager ..... Kelly Fielder  
 House Manager ..... Rudy Thomas  
 Box Office Associate ..... Kathryn Hermann  
 Box Office Associate ..... Josh Lapping  
 Box Office Associate ..... Katrin Murdock  
 Box Office Assistant ..... Danna Segrest  
 Marketing Communications Specialist ..... Caitlin Cavannaugh  
 Marketing Associate ..... Lexi Teuscher  
 Bookkeeper ..... Frances Miller  
 Handyman ..... Jon Bennett  
 Janitorial Services ..... Think & Do Partners LLC  
 Playmakers Playwrights ..... Jeffry Chastang • Carey Crim • Jeff Daniels  
 ..... Jeff Duncan • Quinn D. Eli • Rachel Keown • Brian Letscher • Matt Letscher  
 ..... David MacGregor • Julie Marino • Lauren (Knox) Mounsey • Eric Pfeffinger  
 ..... Megan Pinto • Alvaro Saar Rios • Paul Stroili • Lanford Wilson  
 Resident Artists ..... Sandra Love Aldridge • Connor Allston • Bartley H. Bauer  
 ..... David Bendena • Jon Bennett • Ryan Black • Caitlin Burt • Ryan Carlson  
 ..... Caitlin Cavannaugh • Mark Colson • Susan Craves • Ruth Crawford  
 ..... Carey Crim • MaryJo Cuppone • Brian D. Dambacher • Ben Daniels • Jeff Daniels  
 ..... Lucas Daniels • Rainbow Dickerson • K. Edmonds • Henri Franklin  
 ..... Dana Gamarra • Katie Hubbard • Robert W. Hubbard • Reid G. Johnson  
 ..... Michael Joseph • Sarab Kamoo • Angie Kane • Angela G. King • Amy Klain  
 ..... Brian Letscher • Matt Letscher • Alex Leydenfrost • David MacGregor  
 ..... Hugh Maguire • Randolph Mantooth • Richard McWilliams • Rusty Mewha  
 ..... Angela Kay Miller • Lauren (Knox) Mounsey • Michelle Mountain  
 ..... Vincent Mountain • Reina Mystique • Shelby Newport • Aphrodite Nikolovski  
 ..... Scott Norman • Wayne David Parker • Sarah Pearlina • Brad Phillips  
 ..... Jim Porterfield • Rhiannon Ragland • Suzi Regan • Dawn Rivard  
 ..... Maria Ru-djen • Stephen Sakowski • Danna Segrest • John Seibert  
 ..... Kristin Shields • Noele Stollmack • Paul Stroili • Kevin Theis • Kate Thomsen  
 ..... Matt Tibbs • George Till • Lynch R. Travis • Meghan VanArsdalen • Dez Walker  
 ..... Jonathan West • Dana L. White • Suzanne Young • Will David Young  
 Accounting Services ..... Sinelli & Associates



111 SOUTH MAIN ST. • CHELSEA, MI 48118 • 734-475-0717



## We love Chelsea!

Celebrating **75 years** of stability and financial wellness in the communities we serve.

**Chelsea Branch**  
 12855 Old US 12 E  
 Suite 7  
 american1cu.org  
 (888) 213-2848

**Amer1can**  
 CREDIT UNION  
 Boldly Generous. Convenient. Uncomplicated.

Visit [american1cu.org](http://american1cu.org) for full details! Federally Insured by NCUA | Equal Housing Opportunity





**Chelsea**  
CONSIGNMENT  
Est 2014

104 E Middle St  
Chelsea, MI 48118

734-433-9730  
chelseaconsignment.com

**JIFFY** *mixes*  
CHELSEA MILLING COMPANY



*We are proud to support  
The Purple Rose Theatre  
and the community!*

[www.jiffymix.com](http://www.jiffymix.com)

**M** MUSIC, THEATRE & DANCE  
**2025-26**  
**PERFORMANCE**  
**SEASON**

FLEX PACKAGES  
ON SALE **JUNE 10**

SINGLE TICKETS  
ON SALE **AUGUST 4**

GROUP TICKETS  
ON SALE **JULY 22**

[smt.d.umich.edu/25-26-season](http://smt.d.umich.edu/25-26-season)

f i y  
umichsmt.d



Silver Maples is more than a retirement neighborhood, it's a vibrant community where older adults embrace life to the fullest. Offering compassionate support when it's needed and independence when it's not, we create an environment where aging well means living fully.

Our long-serving staff and nationally recognized services ensure you stay active, engaged, and supported every step of the way.

Join us at Silver Maples and make the next chapter of your life the most rewarding yet!



**SILVER MAPLES**  
*of Chelsea*  
RETIREMENT NEIGHBORHOOD

**734-475-4111 • [www.silvermaples.org](http://www.silvermaples.org)**  

Locally owned, Non-Profit, Jointly Sponsored by the 5 Healthy Towns Foundation and Silver Maples Inc.

# YOUR DREAM KITCHEN STARTS HERE.

The logo for Chelsea Lumber Co., featuring the company name in white text on a dark green, shield-like background.

A photograph of a modern kitchen interior. It features white upper and lower cabinets, a large white marble island with a dark base, and a stainless steel sink with a modern faucet. The backsplash has a geometric pattern, and there are pendant lights hanging over the island.

## Kitchen & Bath Design Centers

1 Old Barn Circle, Chelsea (734)475-9126  
600 E. Michigan Ave, Saline (734)429-5494  
**[chelsealumber.com](http://chelsealumber.com)**



LET US BE YOUR HERO  
**JOIN OUR UNIVERSE**



**print-tech**

. commercial offset . digital color . mailing services  
. online storefront services . storage & fulfillment  
. signs, banners, displays . advertising specialties



Hillary BJ Margaret Ally

734.996.2345 | 6800 Jackson Rd, Ann Arbor MI | [www.printtechinc.com](http://www.printtechinc.com)

## SUMMER DANCE CAMPS & INTENSIVES ballet chelsea

### Camps (ages 3+)

Bluey Camp | 6/23-6/27  
Swiftie Camp | 6/23-6/27  
Defying Gravity Camp | 7/14-7/18  
Play.Dance.Create. Camp | 7/14-7/18  
Frozen Camp | 7/21-7/25

### Intensives (ages 8+)

Advanced Mini Ballet Intensive | 6/2-6/6  
Advanced Performance Intensive | 7/7-7/11  
Intermediate Mini Ballet Intensive | 7/14-7/18  
Musical Theatre Dance Intensive | 7/21-7/25  
Summer Dance Intensive | 7/28-8/15

*Register Now*



Schedule a  
**free** trial  
class today!

**501(c)(3) Nonprofit Est. 1995**

1050 S Main St, Chelsea | 734-475-3070  
[info@balletchelsea.org](mailto:info@balletchelsea.org) [www.balletchelsea.org](http://www.balletchelsea.org)

MY DOG IS CRAZY...

YOU SHOULD TAKE HIM TO THE VET  
AND HAVE HIM **NEUTERED...**

WHA?


THEN HE'D BE **LESS NUTS.**

OH NO...I TOOK HIM  
TO A PSYCHIATRIST-

BUT HE WASN'T ALLOWED  
**ON THE COUCH.**

COMICS • BACK ISSUES • BOARD GAMES

SECRET CRISIS COMICS.COM  
1165 S. MAIN STREET, CHELSEA  
734-593-7110

 SECRET CRISIS COMICS





## CHELSEA COMFORT INN

1645 Commerce Park Drive | Chelsea, Michigan 48118

The Chelsea Comfort Inn offers discounts to all guests and associates of The Purple Rose Theatre Company!

Call today to receive 25% off our Best Available Rate. Group Discounts available for 10 or more rooms. Discounts can only be applied at the time of reservation.

*Reservations can be made  
by calling 734.433.8000.*



Thanks for over a decade  
at The Purple Rose!

[www.scarterphoto.com](http://www.scarterphoto.com)



OWNED & OPERATED BY  
RICHARD & DOUGLAS POST  
SINCE 1987



Decks • Fences • Sheds • Porches  
[www.R-D-Enterprises.com](http://www.R-D-Enterprises.com)

[DOUG@R-D-ENTERPRISES.COM](mailto:DOUG@R-D-ENTERPRISES.COM)

Culture Creations



We travel the world so you can, too.

Unique gifts and items  
from artists around the world.

Bring in your Purple Rose  
tickets for a FREE GIFT!



118 South Main Street  
Chelsea, MI 48118



Great Food, Craft Beers & Fun!  
Now Serving Brunch  
Banquet Rooms  
Open Six Days A Week

[ArcticBreakaway.net](http://ArcticBreakaway.net)  
Follow Us on Facebook

734.475.9999  
Delivery Now Available  
501 Coliseum Drive, Chelsea, MI 48118

**mp** Michigan  
Public **npr**



**morning  
edition**

**Monday-Friday**

**5-9 am**

Up-to-the-minute news  
with Doug Tribou

**91.7 FM | [michiganpublic.org](http://michiganpublic.org)**

**STATE  
SIDE**

**Monday-Friday**

**3-4 pm, 8-9 pm**

The stories of our state  
with April Baer





*Cleary's Pub*

*113 S Main, Chelsea*

*Burgers, Pizza, Pastas & More*

*[www.clearypubchelsea.com](http://www.clearypubchelsea.com)*

**THE ONLY  
TOP-RANKED  
HOSPITAL IN  
MICHIGAN**

**BEST  
CHILDREN'S  
HOSPITALS**

**U.S. News** & WORLD REPORT

**ORTHOPEDICS  
2023-2024**



**C.S. MOTT CHILDREN'S HOSPITAL**  
UNIVERSITY OF MICHIGAN HEALTH



# Follow Us on Social Media!



Facebook.com/PurpleRoseTheatre



Instagram:  
@PurpleRoseTheatre



Scan to join our  
Monthly e-Newsletter!

[www.PurpleRoseTheatre.org](http://www.PurpleRoseTheatre.org)



# Bert & Trixie Visit the Vet

by Matt Letscher

## Additional Program Information

*This performance of Bert & Trixie Visit the Vet includes the use of water-based haze for atmospheric effects.*

## Understudies

*Understudies never substitute for listed characters unless a specific announcement for the appearance is made at the time of the performance.*

Bert/Bitchy	Ryan Carlson*
Trixie/The Owner	Caitlin Cavannaugh*
Leonard	Alex Leydenfrost*
The Nurse	Juji Berry*

\*Member Actors' Equity Association, the Union of Professional Actors and Stage Managers in the United States

The Purple Rose Theatre Company is licensed by ASCAP.

## Additional Acknowledgments

Cascades Humane Society  
Darwin's Eden  
FarmSudz Chelsea  
Kitty Face  
Waterloo Upholstery

# Bert & Trixie Visit the Vet

by Matt Letscher

At this performance, the role of  
***The Nurse***  
will be played by Juji Berry\*.



JUJI BERRY has been a proud member of the Purple Rose Theatre Company for three years, serving as House Manager, Assistant Stage Manager, Backstage Crew, and Actor. She made her professional acting debut earlier this season as Bernice Wilkins in *Office Christmas Party*, *Grinch in Fight with Rudolph*, *Police Called* by Jeff Daniels. “Thank you to our incredible cast, crew, and production team for their dedication. A special thanks to our donors and supporters—your generosity makes our work possible.”

\*Member, Actors' Equity Association

# Bert & Trixie Visit the Vet

by Matt Letscher

At this performance, the role of  
***Bert / Bitchy***  
will be played by Ryan Carlson\*.



RYAN CARLSON is a Resident Artist at The Purple Rose and is grateful to be returning to his home stage. You may remember him as Wally Wilkens Jr in *Office Christmas Party*, *Grinch In Fight with Rudolph*, *Police Called*. Ryan enjoys working behind the scenes as well. Stage Management credits include *What Springs Forth*, *Diva Royale*, and *My Mother and the Michigan/Ohio War*. He has performed in such shows as *The Antichrist Cometh*, *Pickleball*, *Superior Donuts*, *The Hot L Baltimore*, *The Glass Menagerie*, and *Completing Dahlia* to name a few. Ryan has been an AEA union member since the age of twenty. He has worked professionally all over Michigan including at the Detroit Repertory Theatre, Tipping Point Theatre, The Gem, City Theatre and Jewish Ensemble Theatre. Having done thousands of performances, he is hard pressed to pick a favorite show, but productions like *Escanaba in da Moonlight*, *Funnyman*, *A Steady Rain*, *A Lie of the Mind*, and *The Tropical Pickle* will forever hold a memorable place in his heart. Upon earning his Bachelor of Fine Arts degree from the University of Detroit, Ryan became Artistic Director of Planet Ant during its first two seasons as a professional theatre. Ryan would like to thank you for supporting live local union strong productions like this. Find out where and when Ryan's next show will be by following him on the socials.

[www.theryancarlson.com](http://www.theryancarlson.com) \*Member, Actors' Equity Association

# Bert & Trixie Visit the Vet

by Matt Letscher

At this performance, the role of  
***Trixie / The Owner***  
will be played by Caitlin Cavannaugh\*.



CAITLIN CAVANNAUGH is excited to be back at The Purple Rose, where she's honored to be a Resident Artist. This is her 4th production understudying and 16th production at the Purple Rose. Most recently, she was in *My Mother and the Michigan/Ohio War*. Elsewhere around Michigan, you may have seen her at Tipping Point Theatre (*Halftime with Don, Game. Set. Match!*) or Williamston Theatre (*Predictor*). She has also performed with the Texas Shakespeare Festival, Sabanci International Theatre Festival in Turkey, and numerous Chicago theatres, including Victory Gardens and Stage 773. TV: *American Rust* and *Chicago Fire*. Proud grad of Northern Illinois University (BFA Acting) with a Certificate in Acting from the Moscow Art Theatre School. Huge thanks to Rhi, Team SM, Matt, Jeff, Lucas, Amy, Katie, this incredible cast, designers, and everyone behind the scenes, and to her #1 supporters - her grandparents, James, and the best mom ever. IG: @caitlincavannaugh

\*Member, Actors' Equity Association

# Bert & Trixie Visit the Vet

by Matt Letscher

At this performance, the role of  
***Leonard***  
will be played by Alex Leydenfrost\*.



ALEX LEYDENFROST is a Purple Rose Theatre Company Resident Artist and his most recent appearance at PRTC was in *Human Error*. Other PRTC shows include: *Wake, Gravity, Some Couples May...*, *Best of Friends, Superior Donuts, Redwood Curtain, and Vino Veritas*. Alex has also appeared at several other Michigan professional theatres: Performance Network, Power Center, Williamston Theatre, and most recently in *Halftime with Don* at the Tipping Point Theatre. A native New Yorker, Alex has performed Off Broadway at The Pearl Theatre (*As You Like It, Tartuffe*), Circle-in-the-Square (*The Valley of the Dolls*), and too many Off-Off Broadway theatres to list. His film appearances include Mitch Albom's *Have a Little Faith, Pilot Error, Batman v Superman: Dawn of Justice*, and *A Girl Like Him*.

\*Member, Actors' Equity Association





## BOARD OF DIRECTORS

David Larsen- Board Chairman  
 Charles Craves & Maria Leonhauser- Vice Chairmen  
 David Ligotti- Treasurer  
 Charles Eisendrath- Secretary

Peter Brown Sheila Ford Hamp  
 Philip J. Curtis Steven K. Hamp  
 Aaron P. Dworkin Ying Li, M.D.  
 Peter Feeney George Moses  
 Martha Fuerstenau John J. H. Schwarz, M.D.

## PAST BOARD MEMBERS

Judy Dow Alexander, Betty Jean Awrey, \*Gail Bauer, Paul Boylan,  
 \*David A. Brandon, Anne Colone, John Colone, Craig Common,  
 Jill Corr, \*Jeff Daniels, Honorary Melissa Sage Fadim, \*Ann Feeney,  
 \*Patrick Freydl, Ruth Roby Glancy, Doug Graham, H. Ron Griffith,  
 Sanjay Gupta, M.D., Neil Hawkins, \*Richard Helppie, Peter Heydon,  
 \*William B. Holmes, Atanas Ilitch, Marcia J. MacCready, John Mann,  
 Paul Martino, William Michels, Timothy L. Nasso, \*Michael Novak,  
 \*JoAnne Rosenfeld, Ben Upton, Ambassador Ron Weiser,  
 Dawn Williams, Dr. Steve Yarows

\*designates past Board Chairpersons; +deceased

## A MESSAGE FROM THE BOARD OF DIRECTORS

From the beginning, The Purple Rose Theatre Company has aspired to be the beacon of American theatre. Founded in 1991 by Jeff Daniels, our mission has been to develop opportunities for theatre professionals while entertaining, enriching and building a loyal following. Audience commitment to the company has resulted in a fiscally solvent and highly respected arts and community partnership.

The PRTC envisions an even brighter future with increased national visibility and enriched economic and artistic health. Well-established and critically acclaimed, The Purple Rose Theatre Company will continue to be the home of world-class, original American theatre.

The Purple Rose Theatre Company is a member of the Ann Arbor/Ypsilanti Regional Chamber, Arts Alliance, Greater Brighton Area Chamber of Commerce, Chelsea Area Chamber of Commerce, Culture Source, Dexter Area Chamber of Commerce, Greater Jackson Chamber of Commerce, and Saline Area Chamber of Commerce.

Actors' Equity Association (AEA) was founded in 1913 as the first of the American actor unions. Equity's mission is to advance, promote and foster the art of live theatre as an essential component of our society. Today, Equity represents more than 40,000 actors, singers, dancers and stage managers working in hundreds of theatres across the United States. Equity members are dedicated to working in the theatre as a profession, upholding the highest artistic standards. Equity negotiates wages and working conditions and provides a wide range of benefits including health and pension plans for its members. Through its agreement with Equity, this theatre has committed to the fair treatment of the actors and stage managers employed in this production.

AEA is a member of the AFL-CIO and is affiliated with FIA, an international organization of performing arts unions. For more information, visit [www.actorsequity.org](http://www.actorsequity.org).

## DIVERSITY, EQUITY & INCLUSION

The Purple Rose Theatre Company is taking actionable steps to provide and increase opportunities for marginalized artists and theatre makers. We are working with our staff, artists and patrons to create, live, and behave in ways that will respect and represent the wide diversity of souls who call the Midwest home.

The Purple Rose Theatre cares about the well-being of our artists, staff, patrons, and volunteers and is committed to diversity, inclusion, equity, and anti-racism. We can do more. And we are.

We are committed to leading with positive action and want everyone committed to our organization to join us.

Visit [www.purplerosetheatre.org/dei/](http://www.purplerosetheatre.org/dei/) for more information.

## VOLUNTEERS NEEDED

### THEATRE USHERS

As a non-profit theatre, we rely on the generosity of others to help us carry out our efforts. The Purple Rose welcomes volunteer ushers throughout the season. This is a wonderful way to help the theatre and also see a show for free!

Please call the Box Office at 734.433.7673 or email [Tickets@PurpleRoseTheatre.org](mailto:Tickets@PurpleRoseTheatre.org) and we will send you our Volunteer Usher Inquiry Form.

## A SPOTLIGHT ON DEVELOPMENT THE PURPLE ROSE GANG



The Purple Rose Gang is our multi-year giving club at the PRTC. This special “Gang” is comprised of donors who have made a minimum three-year pledge of \$10,000/year.

### Members of The Purple Rose Gang to date are:

David A. Brandon Foundation  
Peter Brown & Maria Leonhauser  
Dick Caldarazzo & Eileen Weiser  
Craig & Donna Common  
Philip J. Curtis  
The Feeney Family  
The Hamp Family  
Annmarie & Neil Hawkins  
Richard & Leslie Helppie  
William B. Holmes Family  
Tom & Debby McMullen  
Peter & Carol Walters  
Ambassador Ron Weiser & Barrie Bender  
Jeff & Dawn Williams

For more information on how you can become a member of The Purple Rose Gang, please contact:

**Director of Donor Engagement,  
Robert Caplis, at 734.433.7782 ext. 108**

THE PURPLE ROSE THEATRE COMPANY  
INDIVIDUAL GIVING

YOUR GIFTS AT WORK!



\$100 . . . . . a playwright fee for one workshop  
\$250 . . . . . special effects for a single show  
\$500 . . . . . cost for set, prop or costume maintenance for a play  
\$1,000 . . . . . professional design expenses for a production  
\$5,000+ . . . . . sponsorship for a PRTC production  
\$10,000+ . . . . . Purple Rose Gang sustainers

**Annual donations of \$250+ qualify for Priority Booking,  
where donors can purchase tickets three weeks before  
the general public.**

**The Purple Rose Theatre Company**  
137 Park Street  
Chelsea, MI 48118  
734.433.7782

**donate@purplerosetheatre.org**  
Tax ID / FEIN 38-2946466

The PRTC is a 501(c)(3) federally tax-exempt, Michigan non-profit organization.  
Your donations are tax deductible to the maximum allowed by law.

*Thank You For Your Support!*

*Annual Gifts/Pledges reflected below were received between:  
May 9, 2024 through May 8, 2025*

**MAJOR BENEFACTOR CIRCLE**  
*(Gifts of \$25,000 and above)*

Anonymous  
Anonymous  
Dick Caldarazzo & Eileen Weiser  
Philip J. Curtis  
Jeff & Kathleen Daniels  
The Huntington National Bank  
Michigan Arts and Culture Council  
The National Endowment for the Arts  
The Shubert Foundation  
The Matilda R. Wilson Fund

**PREMIERE CIRCLE**  
*(Gifts of \$10,000 to \$24,999)*

Ieva Berglands  
Community Foundation for Southeast Michigan  
Michael Feeney  
Peter & Patti Feeney  
Denise Ilitch  
Maria Leonhauser & Peter Brown  
The Martin Family Foundation  
The RabbitHood Fund  
David & Deborah Schaible  
Rick Taylor & Shelley Castor Taylor  
University Office Technologies (UTEC)

*(continued)*



## PRODUCER CIRCLE

(Gifts of \$5,000 to \$9,999)

The Ally Challenge Pres By McLaren  
Ann Arbor Area Community Foundation  
Tim & Tracey Baele  
Jim & Debbie Beuche  
Jack & Susan Carlson  
Chelsea Home Curated by Kitty & Co.  
Chelsea State Bank  
Cleary's Pub  
Chuck & Susan Craves  
Willard R & Lucile W Cowan Charitable Trust  
John & Donna Daniels  
Charles & Julia Eisendrath  
J. Marc & Julianna Feeney  
Friends of the Chelsea District Library  
Giraffe Design Build  
The Hamp Family Fund  
The I.M.E. Fund  
Lane Animal Hospital  
Paul & Darlene Loffreda  
John Merrifield  
Don & Pat Paulsell  
Baiba Rahn  
Secret Crisis Comics  
Bob & Susie Ufer  
Marcus Vale  
*-in memory of Dia Vale*  
Wyn & Hal Wendelken  
Willis & Jurasek, P.C.

## PATRON CIRCLE

(Gifts of \$2,500 to \$4,999)

The Dwight & Lucile Aldrich Charitable Foundation  
Vincent & Frances Dow  
Gaynell Fausell Charitable Trust  
Robert & Diane Fox  
Martha Fuerstenau  
David & Celia Larsen  
Herbert & Karla Linkner  
Ted & Cynthia Mickevicius  
Daniel Moons & Antoinette Pilzner  
Camille Procassini  
Kalpana Shanmugham & James Hamilton  
Kathleen Siegel  
Donny Vendittelli  
Jeff & Amy Voigt  
Walter J. Weber, Jr. Family Foundation  
Jeff & Dawn Williams  
Zingerman's Cornman Farms

## ARTISTIC DIRECTOR CIRCLE

(Gifts of \$1,000 to \$2,499)

Darryl & Sharon Allen  
Anonymous  
David Barnes & Deborah Landenheim  
Dr. Beverly Baroni & Mr. Kevin Ede  
Charley & Kathy Budd  
Ronald T. & Millie Burkman  
Deborah & Jack Burton  
Megen Cagney  
David & Valerie Canter  
Craig & Donna Common  
Aaron & Michelle Crumm  
Jodi Daniels  
Sebastian de Coster  
The Detroit Lions Foundation  
Kevin & Irene Dimitry  
David & Joanne Duff  
Todd & Julie Dziobak  
The Fliege Family Fund  
The Mark A. Frank Family  
Larry & Sarah Grace  
Ann Groves  
*-in memory of Bill & Betty Groves*  
The Mabel Harris Trust  
The Helppie Family Charitable Foundation  
Tom & Mandy Higgins  
Rowell & Penny Huesmann  
Doreen Jackson  
The Carl & Vicki Janssens Charitable Fund  
Willard H. Johnson & Diane S. Kurtz  
Jim Keller & Mary Ellen Hoy  
Sally Kennedy  
Thomas & Lee Gravelyn  
Dave & Linda Lamoreaux  
Patrick Lane & Ashley Wickett  
David Ligotti & Karen Quenneville  
David MacGregor & Louise Zrull  
Melissa & Dan McCance  
Lee & Marge Meserve  
John & Elizabeth Moje  
Dennis Moore  
George & Melanie Moses  
Doug Neilson  
Lenore Orlowska-Warren  
Mark & Jennifer Pinto  
Tom & Carol Postma

Rick Powell & Rita Ayyangar  
Kirk & Sharon Profit  
Ann & Lou Raden  
The Schachinger-Ulin Family  
Charitable Fund  
Jim Seta  
Ken & Bonnie Shay  
Steve Sheldon  
*-in memory of Anne Marshall*  
Ed & Kathy Silver  
Andrea & William Stickney  
Tom Teknos  
Caren Thompson  
*-in memory of David Thompson*  
James & Frances Trask  
Doug & Susan VanArsdalen  
Phil & Sue Wade  
Douglas Weaver & Judy St. Romain  
Weber's Boutique Hotel  
Brad & Arlene Wilkinson  
The Wilkinson Foundation  
Bill & Pam Wood  
Douglas Wood & Kay Holsinger  
Jacqueline Wood  
J.D. & Joyce Woods  
Mike & Diane Worthing  
Stephen Young & Tricia Kinley  
Jeanne Zurich



(continued)

(continued)

## PLAYWRIGHT CIRCLE

(Gifts of \$250 to \$999)

Tom & Terry Adams  
Sally Adler  
Terris & Monica Ahrens  
The ALH Foundation  
Allegra Print & Imaging  
Bob & Marilyn Amano  
Joan A. Ambs  
American 1 Credit Union  
Gretchen & Tom Anderson Family Fund  
Diane Andrasik  
Anonymous  
Anonymous  
Carlo & Donna Apollinari  
Rachel Arnsdorf  
David & Renee Asch  
Rosemary Austgen  
John & Virginia Bareham  
Bob & Linda Barry  
Lee & Floy Barthel  
Alan & Lonna Baum  
Claude & Clare Baxter  
Eugene & Lori Beach  
Gary Beck  
Jim & Marlene Beck  
*-in memory of Joseph K. Piasecki*  
Scott Page & Jennifer Bednar  
Lisa & Scott Belanger  
Benevity  
Miriam Bergman  
Don & Linda Bernardi  
Lorris & Ann Betz  
BIG - Best In Games  
Marcia & Duane Binkley  
Todd & Penny Blackburn  
David & Cathy Blair  
Michael & Holly Blais  
KaTina Blanchard  
Tom & Mary Blaske  
Robert & Cheryl Blunden  
Clara & John Bohrer  
Mark Bortolussi & Jennifer Caplis  
Robert Bourdeau  
Kenneth Boyer & Suzanne Tainter  
Dr. K. Page Boyer & Kathleen Boyer  
John & Janis Boyless

Linda & William Bozgan  
Lee Bradley  
Craig & Bev Brass  
Kurt Brauer  
Deron & Anne Brod  
Amy Brown  
Diane Brown  
Douglas & Karen Brown  
Tim & Cindy Brunett  
Janet & James Bruss  
Thomas Buiteweg  
Ronald Burnard  
Irene & William Bushaw  
Margo & Jim Campbell  
Kathy Carter & Mack Ruffin  
John & Jaye Chandler  
John & Kathy Charpie  
Chelsea Cornerstone LLC  
Chelsea Lumber Company  
Paul Cheney  
Nanciann Cherry  
Laurie Cigan  
Martin Clarke  
Brian & Cheryl Clarkson  
Larry & Jennifer Coates  
Monique Coffman  
Marty & Betsy Colburn  
Meridith Cole  
Anne Colone  
Connie & Jim Cook  
James Cook  
Michael & Janice Cook  
Nancy Cooper  
Kevin & Pat Corr  
Ann & George Crane  
Mort & Renee Crim  
John & Lenya Cristiano  
Reiley Curran  
Nancy & John Daly  
Jason Daunter  
Catherine Decker  
Diane Dennis  
Dennis & Julie Deppner  
Ken Dickinson  
Patrick & Robin Dickson

(continued)

## PLAYWRIGHT CIRCLE

(Gifts of \$250 to \$999)

Karen Dillon  
Carol Diroff  
Marcia & Neil Dorsey  
Dr Martin Drozdowicz  
B. Kenneth Duck & Mary Gallagher  
David & Roxanne Eby  
Sandra Embree  
David Erickson  
Sam & Liz Febba  
Tom Feurig  
Robert Fidler  
Nancy & Alan Finlayson  
Saul & Helen Forman  
*-in honor of Kate Voigt*  
Randall & Christine Forsch  
William Fowle  
Perry & Casey Francis  
Susan Franke  
Robyn Frey & Lawrence King  
Steve Garagiola & Carol Hackett Garagiola  
Martin Garber & Beth German  
Dave & Janet Gauthier  
Tobi Gibbons  
Jim & Candy Gildea  
David & Maureen Ginsburg  
Sarina Gleason  
Patricia & John Glidewell  
Frank & Emily Gobright  
Richard & Judith Golden  
Stephen Gork  
Judy Gorun  
The Gray Family  
David & Marion Griffiths  
Therese Grossi & Paul Sklut  
Greg Groth  
Kirsten Hallstrom  
Susan & Larry Hannon  
Carl & Sylvia Hansen  
Susan & Randy Hardy  
Woody & Susan Harrington  
Susan Harris  
Martha Hashimoto  
Fred & Sarah Hawley  
Michael & Deanna Hayes  
Bill & Lisa Hayhow

Leslie Shipley & Ron Hicks  
Allison & Lincoln Hill  
Richard & JoAnn Hirth  
Peg Hoblack  
James & Sharon Hobson  
Daphne Hodder  
Kathleen & Joel Hoffman  
Daniel Hollander  
Michael & Nancy Hollerbach  
Catherine Hoolahan  
George Hubbard  
Katie & Rob Hubbard  
Susan Hubbard  
*-in memory of Carma Philip*  
Beth Hubrecht  
Dennis & Nancy Irish  
Tove Jackson  
Stephen & Sue Ann Jessup  
Brent & Meghan Johnson  
Dr. Lee Johnson  
Liz Johnson  
Brian Jones  
Jack & Lori Jordan  
Wendy & Kent Kanipe  
Linda Kelleher  
Andy & Marci Klumb  
Mary & Steven Knickerbocker  
David & Judy Konst  
Julie Koss  
Emily Kowalski  
Davida Kruger  
Marlene Kukuzke  
Kimberly Kyro  
David & Mary Laidlaw  
Joey Deni-Lambert & Chuck Lambert  
Geraldyn Lasher  
Katie Lavery  
Randall Lee & Kakki Smith  
Janet & Bruce Lillie  
Kimberly Lim  
John Liskey  
William Livengood  
Gerald & Pat Logan  
Elizabeth Long  
Kari Loper

(continued)

## PLAYWRIGHT CIRCLE

(Gifts of \$250 to \$999)

Tom & Marsana Lovell  
 Erik & Kathleen Lundberg  
 Diane Lusk  
 Dave Manardo  
 John & Anne Mann  
 Gary March & Darlene Domanik  
 Michael & Pamela Marcovitz  
 Raymond Martini  
 David & Marjorie Mastie  
 Gregory Maxwell  
 Jeff May  
 The David Moss & Sharon Mayone  
 Charitable Fund  
*-in honor of Linda, Veronica & Sara*  
 Terri & Richard McCalla  
 Mark McDougall  
 Barbara McEwen  
 Karen McGowan  
 Steve & Rhonda Melchi  
 Angie Merkel  
 David Merkel  
 Patrick & Sandy Merkel  
 Tim & Anne Merkel  
 Kathy & Rick Merrill  
 Colette Mezza  
 Mary Miko  
 Holly Miller & Nancy Harvey  
 Robert & Shelagh Miller  
 Ken & Joanna Milne  
 The Richard & Nancy Monk Charitable  
 Fund  
 Kevin & Karen Morris  
 MSU Theatre  
 Janet Muhleman  
 Andrew Muth & Patricia Saad  
 William Nance  
 Tim Nasso  
 Don & Kay Nelson  
 Rebecca Nickels  
 Dr. Clarence & Rev. Grace Nicodemus  
 Robert & Karen Niedzielski  
 Ken & Betsy Nisbet  
 Janet & Mark Nisbett  
 Mike & Rere Noelke  
 The John & Lexa O'Brien Charitable  
 Foundation

Lynne O'Leary  
 Larry & Melanie Odom-Groh  
 Keith Outland  
 Robert Padgett  
 Margaret & Stephen Palmer  
 Frances & John Parker  
 Jack & Mary Parker  
 Dale & Deborah Parus  
 PayPal Giving Fund  
 Judith Pearl  
 Jim & Joan Penner-Hahn  
 Eric Peterson & Kristin Langellier  
 Barbara Petoskey & James Salay  
 Eric & Tulia Pfeffinger  
 Chelsea House Victorian Inn  
 Max & Sherri Plank  
 Jim Preston  
 Richard & Mary Price  
 Print-Tech  
 Drs. Chris & Rebecca Quintana  
 Joanne Randall  
 Jill Redmon  
 Matthew Reed  
 Suzi Regan & Bill Wilt  
 Timothy Richards & Constance McGuire  
 Robert & Betty Jo Riley  
*-in memory of Carma Philip*  
 Jeanette Robertson  
 Monica & Jim Roby  
 Patrick Roche  
 Mark & Kathy Roeser  
 Charles Ryder  
 Dick & Norma Sarns  
 Marita & Randy Schiffman  
 Thomas Schlachter  
 Richard Schultz  
 Aileen Schulze  
 Ron & Michele Schumacher  
 Tim Donahue & Melisa Schuster  
 Ruth Ann & Michael Schwarz  
 Devin & Corey Scillian  
 John & Cynthia Secrist  
 Stuart Sedlacek  
 Danna & Wade Segrest  
 Candice Shavalia & David Strauss

(continued)

## PLAYWRIGHT CIRCLE

(Gifts of \$250 to \$999)

Richard Sherburne  
 Scott Meves & Kristin Shields  
 Christopher & Phyllis Shifflet  
 The Fonville Shoemaker Family  
 Foundation  
 Jean & Thomas Shope  
 Bill & Jennifer Shroeger  
 David & Nany Siegel  
 Sharon & Peter Silveri  
 Mallory Simpson & Gregory Schatzle  
 Peggy & Michael Singer  
 Erik Sinka  
 William & Cherie Sirois  
 Victoria Sistek & Matthew Burke  
 Brooks & Nancy Sitterley  
 Michael Slusarski  
 Channing & Lori Smith  
 Danielle & Lawrence Smith  
 Linda Smith  
 Scott & Linda Smith  
 Chad & Linda Spawr  
 Spencer Ann Arbor  
 Jeff Spindler  
 Katherine Spindler  
 Ron Stankovitz  
 The Sterken Family Foundation  
 Dana Stetson  
 James Stroehmann  
 Paul & Monica Stroili  
 Derek Strong  
 Dennis & Jan Sullivan  
 Randall Sung  
 George & Julie Sutton  
 Patricia Swaney  
 Bob & Barbara Swistock  
 John & Diane Tandy  
 Jean Thayer  
 Reid Thebault  
 Metzger Therrien Family Foundation  
 Rob Thomas & Angie Cesere  
 Jane & Nigel Thompson  
 Laenne Thompson  
 Thrivent Financial  
 Barbara Tietjen  
 Pat & Charles Timberlake

Ayse & Loren Tobey  
 William Treharne & Deborrah Salzberg  
 Allen & Beth Tucker  
 Claire Turcotte  
 Michael Urli  
 Ann Utter  
 Karen Valvo  
 Karl Van Harn & Joanna Bailey  
 Beth Voulgaris  
 Susan Wacksmuth  
 Mary Wallace  
 Diane Wallen  
 Steven & Jan Ward  
 Karen & Nick Waselewski  
 John & Lorraine Webb  
 Brian Weicker  
 Sandra & Thomas Weimert  
 Neal & Susan Weinberg  
 Wendy Weiner  
 Sandra Weintraub  
 Susan & Mark Wellman  
 Robert Wendt & Judith Pheatt  
 Susan & Peter Westerman  
 Carol Westfall  
 Kathleen & Carl White  
 Barbara Wiese  
 Tim & Linda Willibey  
 Lee Willwerth  
 Scott Winterstein  
 Jody Wise  
 James & Diana Wright  
 Steve & Dayle Wright  
 Jerome & Susan Zake  
 Stephen & Jane Zawistowski  
 Howard & Faye Zuckerman  
 Fred & Miriam Zuidveld  
 David & Susan Zurvalec  
*-in honor of Lois Zurvalec*

(continued)



## CAST CIRCLE

(Gifts of \$100 to \$249)

Bob Bluhm & Sherle Abramson-Bluhm  
Adair Family Fund  
Terry & Cindy Ahern  
J. David Allan  
Allegra Marketing of Okemos  
Dave & Marilyn Allyn  
Maureen Alterman  
Rich & Becky Altschuler  
Christine Alvarado  
Michael Archer  
Robin & Bradley Axelrod  
Catherine Badgley & Gerald Smith  
Frank & Brenda Baker  
Robert & Joanne Barhite  
Carly Bauer  
Henry & Molly Bazydlo  
Norma Beatriz  
Chris Becker  
Dennis Behrendsen  
Hillary & Mark Bennett  
Gary & Sheryle Benning  
Jeff & Cindy Berner  
Margaret Bird  
*-in memory of Leeds Bird*  
Robert & Tana Boehm  
Howard & Luanne Booth  
John & Leora Bowden  
John & Mary Jane Bower  
James Brandon  
Robin & Michael Brooks  
Robert Brougher  
Dickson & Dee Brown  
Beth Bruce  
Phil Bryant  
Beverly Budke  
Stephen & Deborah Burling  
Andrew Caird  
Jon & Karen Call  
Wendy Carman  
Janice Carr  
Kenneth Chamberlain  
Albert & Alice Chambers  
Chelsea Comfort Inn  
W Peter Cherry  
Martha Child  
Kaaren L. Christopherson  
Gary Ciarkowski  
Steward & Bonita Cline  
John Cole  
George Collins & Paula Hencken  
Brian Connelly  
James & June Coyne  
Eileen Crawford  
R.W. & Peggy Cronenweth  
Judy A. Crookes  
Paul & Barbara Cumming  
Richard & Barbara Czarnota  
Marylee Dalton & Lynn Drickamer  
Brian Dambacher & Sarah Pearline  
Mark & Diane Davies  
Thomas & Jean Davis  
Jerome Degrood  
David & Kristine Denzin  
Paul & Mary Derwich  
Sherry L. Dickerson  
Gene & Barbara Dickirson  
John & Linda Dietrich  
JoAnn & Richard Dionne  
Trey & Colleen Dolan-Greene  
Terrence & Nancy Donnelly  
Kelly & Nick Dyer  
Peg Eaton  
Daniel Edwards  
Vince & Michelle Elie  
Sue & Bob Elkins  
Donald Enderby  
Sheryl Fagin  
FarmSudz LLC  
Karen Ferguson  
Louis Ferraresi  
James & Kathy Fisk  
Janice Fleet  
Barbara Frey & Nick Thines  
Frost Road Orchards  
Larry & Nancy Galbraith  
Connie Gee  
Joyce & Steve Gerber  
*-in honor of Kate Voigt*  
Pamela Gillis  
James & Anne Gilmore  
Janet & James Gilsdorf  
Elizabeth Glenn  
Karen Glorio  
Mark Guzdial

(continued)

## CAST CIRCLE

(Gifts of \$100 to \$249)

JoAnn Haddad  
Frederick Ham  
Gary Hambel  
Jane Harrell & Judith Pick  
Bruce & Grace Harrison  
Deann Hervey  
David & Anne Hodge  
William & Karen Hoffert  
Cathy Holcomb  
Dr. Nancy Homburg  
Victoria & Brian Howard  
Elizabeth Huldin  
Patricia A. Huntington  
Denise & Gary Iams  
Jason & Rebecca Ingber  
Ellen Ives & Colleen Johnson  
*-in memory of Patricia Hobar*  
Gregory Jablonski  
Callie & Steve Jerant  
Carey Jones  
James Juergens  
Tom Denhof & Sarab Kamoo  
David & Marsha Keeler  
The Kennard Family Charitable Fund  
Dennis & Ruth Kenny  
Larry W. King  
Elizabeth Kinney  
Anthony Klain  
Mary Knake  
Zak & Stephanie Knaus  
Paul Kolsen  
Sue & Kurt Koseck  
Tina Kozak  
Robert Kuch  
Amy Lamoreaux  
Adelaide & Tim Lancaster  
Janet Larson  
Michael & Kim Lavich  
Deborah Lee  
Jean Lyle Lepard  
Mark & Sandy Luetke  
Sherman & Charline MacCready  
Katie & Gary MacDonald  
Plum Market  
Rochelle Martinez  
Dakin & Anne Marie Matthews  
Joan & Jeremy Mattson  
Donald May  
James McCluskey  
Alice McCreary  
Jeff & Janet McDole  
Catherine McLogan  
Barbara D. McMillan  
Mary McNally  
Margot & Tom Mehringer  
Donald & Barbara Meier  
Merx Communication  
Carol & William Middel  
Jackie & Stephen M Mierzejewski  
Vonetta Mills  
Alexandra & Matt Moore  
Palmer & Susan Morrel-Samuels  
James Morrow & Karen McKinney  
Nancy Needles  
Sean O'Keefe  
Peas & Carrots Hospitality  
Bill & Susan Penner  
Ann Marie Petach  
Eric Pfeffinger  
William & Donna Polom  
Debbie & Dave Porter  
John & Sue Potter  
John & Sally Preston  
George & Lori Pritchett  
Paul & Barb Purdue  
Dave & Marcia Quilter  
Robert Ransom  
The Reap Family Fund  
Amy Riordan  
Jessica Roberts  
Mary Roberts  
Christine Rockwood  
Gloria Rooke  
Vicki Rothhaar  
Anne & Randy Ruch  
Rosalyn Sarver  
Nelson & Mary Sauer-Games  
Amy Sayles  
Marilyn Schafer  
*-in memory of Carma Philip*  
Michael & Ilene Schechter  
Thomas Schmitz  
Margot Schreer  
Mary Schulze

(continued)

## CAST CIRCLE

(Gifts of \$100 to \$249)

Katie See & Michael Kamrin  
 Robert & Patricia Shaw  
 Cliff & Ingrid Sheldon  
 Dennis & Carolyn Shephard  
 Patrick & Susan Shields  
 Sally & Brian Silver  
 Rachel Slupe  
 Karen Smithbauer  
 Dale Sniegowski  
 Jan & Mark Sockness  
 Don Souden  
 Bruce & Gabrielle Southwell  
 Linda Spear & Jeffery Wanser  
 Christine Stier & Tom Fricke  
 Elizabeth Sweet & Scott Gerstenberger  
 Sandi Szufnar  
 Roy & Cathy Szyndlar  
 Jim & Mary Szyskowski  
 Andreas & Tracy Teich  
 Charlie & Judy Thomas  
 Michael & Jill Thompson  
*-in honor of Daphne Hodder*  
 Scott Timms  
 Janette & Martin Tobin  
 Jeanne & Dan Trainor  
 Steven Trosin & Monica Moser  
*-in honor of Steven & Avé Veneklasen*  
 Phil Tuchinsky  
 David Turner  
 Donna Ullrich

Barbara Vallieu  
 Debbie Vendittelli  
 Robin Von Wald  
 Kathy & Jon Walgren  
 Michael Wecht & Aja Brandmeier  
 Virginia & Lorin Weddell  
 Ryan & Jamie Welsh  
 Tracey Wentz & Chuck Blackmer  
 Clint Wheeler  
 James F White  
 The Wilczynski Family Fund  
 Bob & Charlotte Wilks  
 Mark Wisely  
 Rebecca & Nancy Zajdel  
 Kurt Zdanio  
 Imogene & Paul Zimmermann  
 Linda Zukowski

**THANK YOU FOR YOUR  
 AMAZING SUPPORT THIS SEASON!**

## ADVERTISE IN OUR PLAYBILL



To reserve program advertising space in our 2025-2026 season playbills, please email Marketing Associate, Lexi Teuscher at [lexi@purplerosetheatre.org](mailto:lexi@purplerosetheatre.org).

For complete season information, visit the Purple Rose website -- [purplerosetheatre.org](http://purplerosetheatre.org)

**Program Advertising Deadline For  
 Fall Production -- August 21, 2025**

**Norma & Wanda**  
 a comedy by Jeff Daniels

Ad Size	Full Season Rate	3 Show Rate	2 Show Rate	Single Show Rate
<b>Inside Covers</b> (4.5" x 7.5")	<b>\$5250 (B/W)</b> (\$1312.50 per ad) <b>\$6000 (Color)</b> (\$1500 per ad)	<b>\$4275</b> (\$1425 per ad)	<b>\$3050</b> (\$1525 per ad)	<b>\$1575</b>
Advertisers who commit to an inside cover for four shows receive 8 complimentary tickets for the season.				
<b>Full Page</b> (4.5" x 7.5")	<b>\$2600 (B/W)</b> (\$650 per ad) <b>\$3000 (Color)</b> (\$750 per ad)	<b>\$2025</b> (\$675 per ad)	<b>\$1400</b> (\$700 per ad)	<b>\$750</b>
Advertisers who commit to a full page for four shows receive 6 complimentary tickets for the season.				
<b>Half Page</b> (4.5" x 3.625")	<b>\$1500 (B/W)</b> (\$375 per ad) <b>\$1900 (Color)</b> (\$475 per ad)	<b>\$1245</b> (\$415 per ad)	<b>\$900</b> (\$450 per ad)	<b>\$475</b>
Advertisers who commit to a half page for four shows receive 4 complimentary tickets for the season.				
<b>Quarter Page</b> (2.125" x 3.625")	<b>\$900 (B/W only)</b> (\$225 per ad)	<b>\$750</b> (\$250 per ad)	<b>\$550</b> (\$275 per ad)	<b>\$300</b>
Advertisers who commit to a quarter page for four shows receive 2 complimentary tickets for the season.				

## LIBRARY READINGS



The Purple Rose has a long standing partnership with the Chelsea District Library. Together we share live play readings by established and rising playwrights, to promote and develop new work for our stage and theatre communities as far as our Zoom webinar can reach. Our play readings have connected us with people all across the United States, from Chicago and New York, to Los Angeles and the US Virgin Islands. During our September 10, 2022 play reading, we had international attendance from west Africa, more specifically, Nigeria.

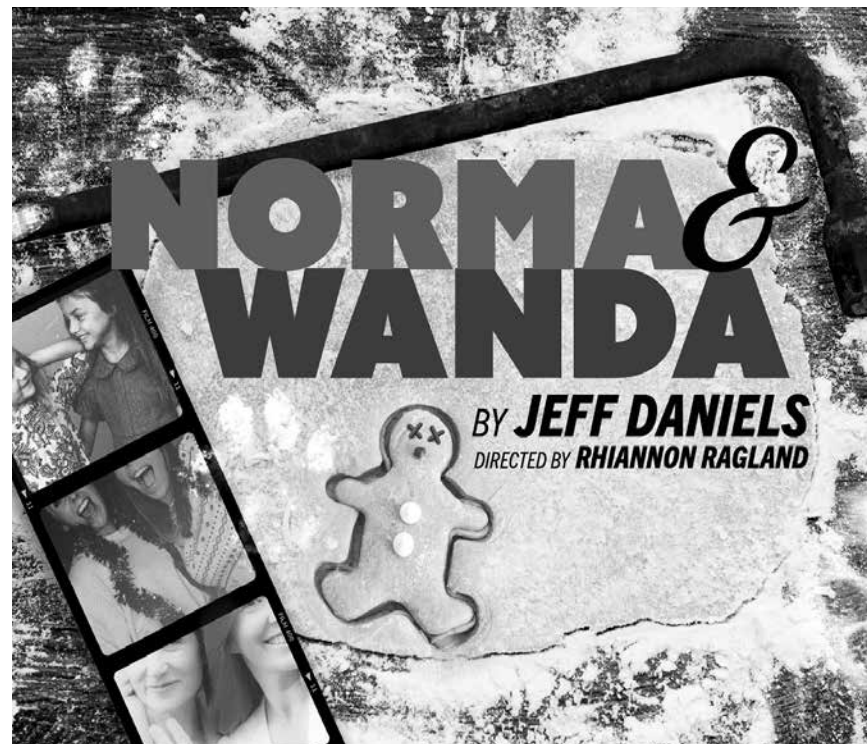
Play readings are free to all and take place on Saturday mornings at 10:30am, EST. Virtual attendees are able to view a live play reading and offer feedback in a group chat with the cast, director and playwright.

To join us, visit our website at [PurpleRoseTheatre.org](http://PurpleRoseTheatre.org) or go to [ChelseaDistrictLibrary.org](http://ChelseaDistrictLibrary.org) for more information and how to register.

**Upcoming Play Readings via Zoom:**  
**Saturdays at 10:30am EST**

**September 13 | November 8**

## UP NEXT



### ***Norma & Wanda***

**A Comedy by Jeff Daniels**

**September 25 - December 21, 2025**

20th Anniversary Production! Two very different sisters get themselves into an outrageous pickle with an old high school boyfriend, a chaotic church social and a secret family recipe for Christmas sausage.

*\*Contains adult language and subject matter.*

**Priority Booking: July 22 @ 1pm**

**General Sales: August 12 @ 1pm**

**Call the PRTC Box Office at 734.433.7673 or  
Book your tickets at [www.purplerosetheatre.org](http://www.purplerosetheatre.org)**



# PATRON INFORMATION

## Contact

Address: 137 Park Street  
Chelsea, MI 48118

Box Office: 734.433.7673

tickets@purplerosetheatre.org

Administration: 734.433.7782

info@purplerosetheatre.org

Fax: 734.475.0802

## Box Office Hours:

Monday thru Friday: 1:00 PM - 6:00 PM

## Box Office Performance Hours:

Monday	CLOSED
Tues. & Wed.	1:00 PM - 6:00 PM
Thurs. & Fri.	1:00 PM - 9:30 PM
Saturday	1:00 PM - 9:30 PM
Sunday	12 Noon - 4:00 PM

## Performance Times

Wednesday	at 3:00 PM
Thursday	at 3:00 PM & 7:30 PM
Friday	at 8:00 PM
Saturday	at 3:00 PM & 8:00 PM
Sunday	at 2:00 PM

Visit [PurpleRoseTheatre.org](http://PurpleRoseTheatre.org) for complete schedules and added performance dates.

## Tickets

Please provide the name that the order was placed under when you come to pick up the tickets.

Tickets may be purchased by phone or online at [PurpleRoseTheatre.org](http://PurpleRoseTheatre.org) with all major credit cards, as well as Apple Pay or Google Pay.

Reservations of fewer than 12 tickets must be paid in full 24 hours prior to the performance. Refunds for the value of the tickets will not be issued after 30 days of purchase or within 24 hours of the performance. If you would like to exchange your tickets for a future performance, or convert the value to In House Credit, we ask the latest you do so is 24 hours prior to the performance date and time. Any requests made after that will be at the discretion of the Box Office. Web and phone sales fees are nonrefundable.

Group reservations for 12 or more are available at a discount of \$6 per ticket. Tickets must be pre-paid three weeks prior to performance.

## Gift Cards

Gift Cards are available in any amount! See the Box Office for more details.

## Accessibility

The PRTC complies with all current ADA Standards. Assisted listening devices and large print programs are available upon request at our Box Office for all performances.

## Hearing Loop Technology-Switch Hearing Aid to T-Coil

Activate the telecoil (t-coil) in your hearing device to hear sound with less background noise -- directly into your device. If you do not have a t-coil enabled device, request a headset and receiver at our Box Office.

## Refreshments

Please do not bring anything to eat or drink into the theatre.

## No Smoking Policy

Smoking is not permitted inside the building.

## Cameras and Recording Devices

The making of photographs and/or recordings is strictly prohibited inside the theatre.

## Electronic Devices

During performances, please turn off or silence cellular phones, watch alarms and other electronic devices.

## Babes-in-arms

Out of consideration for our patrons and performers, babes-in-arms are not allowed in our theatre during performances.

## Complimentary Cough Tablets

These are available at the Box Office. To avoid performance distractions, please unwrap them prior to the performance, at intermission or during the break between scenes.

## Please Remain Seated

Actors may be using the aisles for entrances and exits during the show.

## Late Seating

Once the performance has begun, seating is at the discretion of the House Manager.



**Lane Animal Hospital  
celebrates 120 years as a  
proud member of the Chelsea  
community.**

**3 Generations of Family-Owned Care-  
For Pets & the People Who Love  
Them.**



701 N. Main Street  
Chelsea, MI 48118  
734-475-8696  
[www.laneanimalhosp.com](http://www.laneanimalhosp.com)

Sean Carter Photography  
Dez Walker, Teri Clark Linden,  
Caitlin Cavannaugh



## relationships matter

We embrace game-day excitement while building relationships, supporting local businesses, and supporting financial dreams. True victories happen when communities thrive together.

### Personal | Business | Agricultural

- Personal Loans, Mortgages, Checking & Savings Accounts
- Treasury Management, Business Checking & Savings Accounts
- Farm Equipment, Livestock Loans & More



NMLS ID: 400046

[www.chelseastate.bank](http://www.chelseastate.bank)

